

**1** Hydraulics **3-284**

**2** Hydraulic Quick Release Couplings **285-320**

**3** Pneumatic Quick Release Couplings **321-406**

**4** Monitor & Test **407-446**

**5** Pneumatic & Vacuum **447-762**

**6** Push-in Fittings & Tubing **763-918**

**7** Valves & Actuation **919-1060**

**8** Ring Main **1061-1136**

**9** Hose Tails, Adaptors, Fittings & Manifolds **1137-1224**

**10** Stainless Steel **1225-1332**

**11** Malleable Iron **1333-1398**

**12** Hose, Couplings, Ducting & Hose Reels **1399-1510**

**13** Clips & Clamps **1511-1558**

**14** Paint, Sprays & Adhesives **1559-1590**

**15** Blow Guns, Vacuum & Nozzles **1591-1616**

**16** Fuelling, Lubrication, Wash Down & Misting **1617-1696**

**17** Compressors & Air Tools **1697-1726**

**18** Hand Tools & PPE **1727-1765**

# SECTION 8

## Ring Main

---

**8.01** Aluminium & Plastic Systems **1061-1096**

---

**8.02** ABS Systems **1097-1100**

---

**8.03** UPVC Systems **1101-1115**

---

**8.04** Stainless Steel & Copper Systems **1116-1136**

---

# SECTION 8

## 8.01 Aluminium & Plastic Systems

- Transair Ring Main System Air & Vacuum Range
- Ring Main System
- Technopolymer System Fittings
- Valves
- Fittings, Aluminium System
- 6" (168.3mm) Tubing & Fittings System
- Ring Main Pipe Kits (CARM)
- Fast-Track Ring Main System
- Polyethylene Compression System
- Polyethylene Pipe Universal Transition fittings
- Polyethylene Pipe Universal Transition Fittings & Valves



1061-1096

## 8.02 ABS Systems

- ABS Imperial Pipe System



1097-1100

## 8.03 UPVC Systems

- UPVC Metric Pipe System
- UPVC Imperial Pipe System
- UPVC Threaded Fittings



1101-1115

## 8.04 Stainless Steel & Copper Systems

- Stainless Steel 316 Press Fit Piping System
- Copper Press Fit Piping System
- Brass Ball Valves
- Nirosan® Stainless Steel Press Fit Piping System

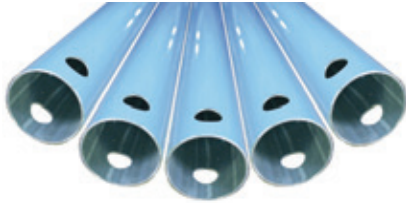


1116-1136

# TRANSAIR RING MAIN SYSTEM AIR & VACUUM RANGE



## Transair Aluminium Pipe



### 3 Metres, Single Lengths

1100	Tube OD mm	Tube ID mm
1003A.17.04.00	16.5	13
1003A.25.04.00	25	22
1003A.40.04.00	40	37
1003A.50.04	50	47
1003A.63.04	63	59

### 6 Metres, Per Pack

1100	Tube OD mm	Tube ID mm	Pack Size
1006A.25.04.00	25	22	6
1006A.40.04.00	40	37	6
1006A.50.04	50	47	5
1006A.63.04	63	59	4



### 2 Port 45° Threaded Wall Bracket, BSPP

1100	Female Thread
6690.21.21	1/2"

## Transair Range



### 1 Port 45° Tube Wall Bracket, BSPP

1100	Tube OD mm	Female Thread
6639.17.21	16.5	1/2"
6639.25.21	25	1/2"



### 2 Port 45° Tube Wall Bracket, BSPP

1100	Tube OD mm	Female Thread
6682.17.21	16.5	1/2"
6682.25.21	25	1/2"



### 3 Port 45° Tube Wall Bracket, BSPP

1100	Tube OD mm	Female Thread
6695.25.21	25	1/2"



### 2 Port Horizontal Tube Wall Bracket, BSPP

1100	Tube OD mm	Female Thread
6681.17.21	16.5	1/2"
6681.25.21	25	1/2"



### 1 Port 45° Wall Bracket with Ball Valve

1100	Tube OD mm	Female Thread
6678.17.21	16.5	1/2"
6678.25.21	25	1/2"



### 2 Port 45° Wall Bracket with Ball Valve

1100	Tube OD mm	Female Thread
6693.17.21	16.5	1/2"
6693.25.21	25	1/2"



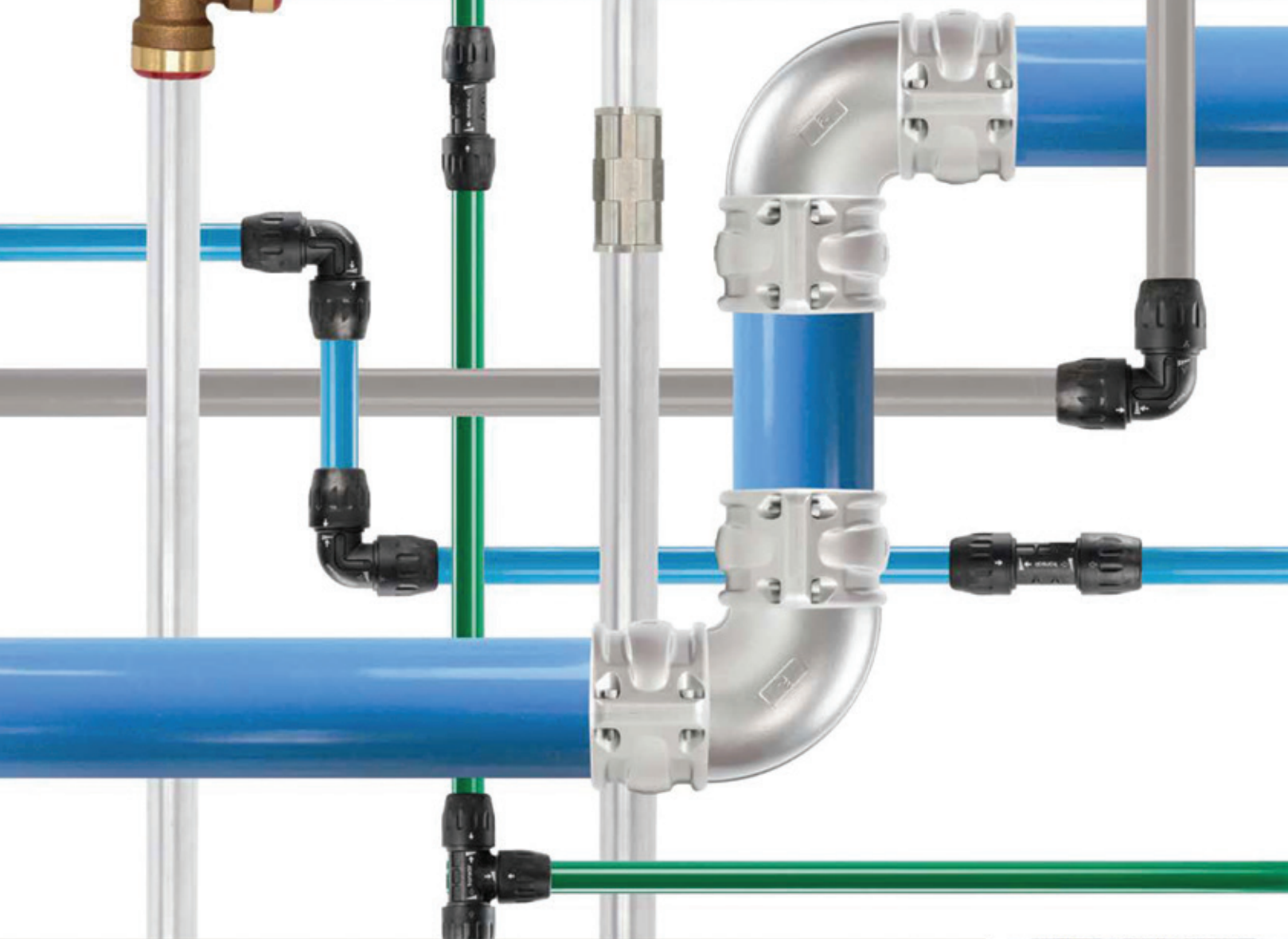
### 3 Port 45° Wall Bracket with Ball Valve

1100	Tube OD mm	Female Thread
6637.25.21	25	1/2"



### Mini Bracket

1100	Tube OD mm	Female Thread
6661.25.21	25	1/2"
6661.40.21	40	1/2"
6661.40.27	40	3/4"
6661.50.21	50	1/2"
6661.50.27	50	3/4"
6662.63.21	63	1/2"



## Transair: Modular Pipe Systems

- Lower pressure drop
- Air quality class 1-1-1
- Safest connection technologies
- Labour and installation time reduced
- Services to support your project



ENGINEERING YOUR SUCCESS.

# TRANSAIR RING MAIN SYSTEM AIR & VACUUM RANGE



## Transair Range



### Reducing Bracket

1100	Tube OD A mm	Tube OD B mm
6662.25.17	25	16.5
6662.25.00	25	25
6662.40.17	40	16.5
6662.40.25	40	25
6662.50.25	50	25
6662.63.25	63	25



### Quick Assembly Bracket with Ball Valve, BSPP

1100	Tube OD mm	Female Thread
6669.25.21	25	1/2"
6669.40.21	40	1/2"
6669.40.27	40	3/4"
6669.50.21	50	1/2"
6669.50.27	50	3/4"
6669.63.21	63	1/2"
6669.63.27	63	3/4"



### Quick Assembly Direct Feed Bracket

1100	Tube OD A mm	Tube OD B mm
RA69.50.25	50	25



### Quick Assembly Direct Feed Bracket, BSPP

1100	Tube OD mm	Female Thread
RA65.50.04	50	1/2"
RA65.50.08	50	1"



### Pressurised System Outlet with Ball Valve

1100	Tube OD mm	Female Thread
EA98.50.04	50	1/2"



### Male Stud, BSPT

1100	Tube OD mm	Male Thread
6605.17.13	16.5	1/4"
6605.17.21	16.5	1/2"
6605.25.21	25	1/2"
6605.25.27	25	3/4"
6605.25.34	25	1"
6605.40.34	40	1"
6605.40.42	40	1.1/4"
6605.40.49	40	1.1/2"
6605.50.49	50	1.1/2"
6605.50.48	50	2"
6605.63.48	63	2"



### Male Stud BSPT with Fixing Plate

1100	Tube OD mm	Male Thread
6615.50.49	50	1.1/2"
6615.50.48	50	2"



### Pipe to Pipe Connector

1100	Tube OD mm
6606.17.00	16.5
6606.25.00	25
6606.40.00	40
6606.50.00	50
6606.63.00	63



### Plug-in Reducer

1100	Description
6666.17.25	25mm Pipe to 16.5mm Pipe
6666.25.40	40mm Pipe to 25mm Pipe



### Plug-in Reducer

1100	Description
6666.40.50	50mm Pipe to 40mm Pipe
6666.50.63	63mm Pipe to 50mm Pipe



For Parker Blow Guns  
see page 1596

# TRANSAIR RING MAIN SYSTEM AIR & VACUUM RANGE



## Transair Range



### Vented End Cap

1100	Tube OD mm
6625.17.00	16.5
6625.25.00	25
6625.40.00	40
6625.50.00	50
6625.63.00	63



### 90° Elbow

1100	Tube OD mm
6602.17.00	16.5
6602.25.00	25
6602.40.00	40
6602.50.00	50
6602.63.00	63



### Reducing Tee

1100	Tube OD A mm	Tube OD B mm
6604.50.25	50	25
6604.50.40	50	40



### 90° Elbow Male Stud, BSPT

1100	Tube OD mm	Male Thread
6609.17.13	16.5	1/4"
6609.17.21	16.5	1/2"
6609.25.21	25	1/2"
6609.25.27	25	3/4"
6609.25.34	25	1"
6609.40.34	40	1"
6609.40.42	40	1.1/4"
6609.50.49	50	1.1/2"
6609.50.48	50	2"
6609.63.48	63	2"



### 45° Elbow

1100	Tube OD mm
6612.25.00	25
6612.40.00	40
6612.63.00	63



### Lockable Aluminium Valve

1100	Tube OD mm
4092.17.00	16.5
4092.25.00	25
4092.40.00	40
4092.50.00	50
4092.63.00	63



### Equal Tee

1100	Tube OD mm
6604.17.00	16.5
6604.25.00	25
6604.40.00	40
6604.50.00	50
6604.63.00	63



### Flexible Hose

1100	Tube OD mm	Length Metres
1001E.250001	25	0.57
1001E.250004	25	2



For Parker Legris Tubing  
see pages 906-908



# TRANSAIR RING MAIN SYSTEM AIR & VACUUM RANGE



## Clips, Clamps, Spacers & Tools



### Fixing Clip For Rigid Pipe

1100	Tube OD mm
6697.17.00	16.5
6697.25.00	25
6697.40.00	40
6697.50.00	50
6697.63.00	63



### Transair Clips & Spacers

1100	Description
6697.00.03	Spacer Block for Fixing Clip
6697.00.02	Clip Adaptor for Rod M8 x 1 Male x M10 x 1.5 Female



### Transair Beam Clamps

1100	Description
6699.03.01	Screw Type Beam Clamp 16.5mm to 40mm
ER99.06.02	Screw Type Beam Clamp 63mm to 100mm for M8 Screw
ER99.06.03	Screw Type Beam Clamp 63mm to 100mm for M10 Screw



### Transair Tube Cutter

1100	Description
6698.03.01	Tube Cutter for 16.5mm to 63mm Pipe



### Transair Tools

1100	Description
6698.04.02	Deburring Tool for Rigid Aluminium Pipe 16.5mm to 100mm
6698.04.01	Chamfer Tool for Rigid Aluminium Pipe 16.5mm to 40mm
6698.04.03	Marking Tool for Rigid Aluminium Pipe 16.5mm to 40mm
6698.05.03	Tightening Spanners for 63mm Nuts



### Transair Drilling Jig

1100	Description
6698.01.03	Drilling Jig 25 to 63mm



### Transair Drilling Tool

1100	Description
6698.02.02	Drilling Tool for 25mm Pipe
6698.02.01	Drilling Tool for 40mm & 63mm Pipe

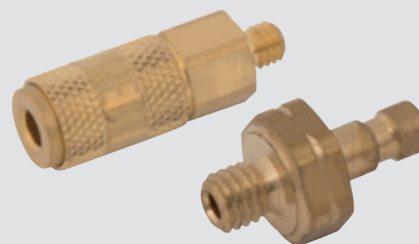


### Tool Case

1100	Description
6698.00.05	Complete Kit 16.5mm to 63mm



For Parker Rectus QRC's  
see pages 330-390



# WHY CHOOSE AIRCOM?



AIRCOM PIPE



STANDARD PIPE

## EXPANDABILITY ACCORDING TO REQUIREMENTS

The system grows with the plant.

## ELIMINATE WASTED AIR AND LEAKS

Our components in aluminium, technopolymer and HIP guarantee superior, above-average performance.

## EASY, RAPID INSTALLATION

Reduction in labor costs and ease of intervention.

## MODULAR DESIGN

Flexibility of use and greater adaptability to the specific usage requirements.

## OPTIMUM, CONSTANT PERFORMANCE

Constant energy savings over time.

## OUR SERVICES

AIRCOM services support our Partners throughout the plant's entire life cycle: from the initial consultancy to support during design.



### TECHNICAL TRAINING

We offer advanced training and periodic update courses for our Partners' technical personnel (designers, installers, dealers).



### RATIONALISING ENERGY CONSUMPTION

Thanks to the wide choice of components and the flexibility of the systems, as well as to computer simulations, our piping systems help reduce energy costs to the lowest levels possible, in a consistent manner over time: the system pays for itself.



### SUPPORT FOR DESIGNERS

We support our Partners at every step, from the more basic plants to the highly complex systems, assisting in totally new designs as well as in revamping and additions to existing structures.



### ADVANCED SOFTWARE

We have developed proprietary software to provide support in plant sizing and on site design. Thanks to this software, our Partners can offer the end user a complete, efficient and personalized service.



# RING MAIN SYSTEM

## Coated Aluminium Pipe



### Compressed Air, 5.8 Metres, Blue

9191	Ø mm
QLTUAL020S	20
QLTUAL025S	25
QLTUAL032S	32
QLTUAL040S	40
QLTUAL050S	50
QLTUAL063S	63
QLTUAL080S	80
QLTUAL110S	110

Tech Sheet 110821

### Compressed Air, 4 Metres, Blue

9191	Ø mm
QLTUAL4016S	16
QLTUAL4020S	20
QLTUAL4025S	25
QLTUAL4032S	32
QLTUAL4040S	40
QLTUAL4050S	50
QLTUAL4063S	63

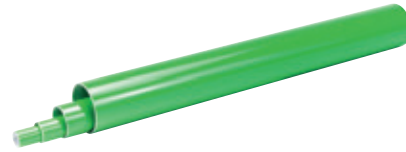
Tech Sheet 110821



### Vacuum, 5.8 Metres, Grey

9191	Ø mm
QLTUALGY020S	20
QLTUALGY025S	25
QLTUALGY032S	32
QLTUALGY040S	40
QLTUALGY050S	50
QLTUALGY063S	63
QLTUALGY080S	80

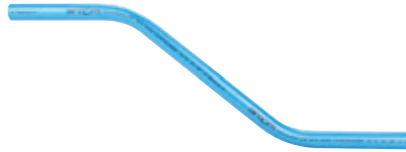
Tech Sheet 110821



### Nitrogen, 5.8 Metres, Green

9191	Ø mm
QLTUALG020S	20
QLTUALG025S	25
QLTUALG040S	40
QLTUALG063S	63

Tech Sheet 110821



### Double Bend

9191	Ø mm
QLSCI016	16
QLSCI020	20
QLSCI025	25

Tech Sheet 110821

## Multilayer Bendable Pipe



### Compressed Air, 50 Metres

9191	Ø mm
QLTUMLST016	16
QLTUMLST020	20
QLTUMLST025	25

Tech Sheet 110841

## Technopolymer Pipe



### Compressed Air, 4 Metres

9191	Ø mm
AIRTU020S	20
AIRTU025S	25
AIRTU032S	32
AIRTU040S	40

Tech Sheet 110842

**RIDGID**

You might also need  
**Pipe & Tube Cutters**  
see pages 1743-1746



# TECHNOPOLYMER SYSTEM



## LIGHTWEIGHT, BUT POWERFUL

The Quick Line technopolymer product range comes in the following diameters:

16, 20, 25, 32, 40, 50 and 63 mm

A careful study and design of dimensions and materials enable us to achieve a light and functional, all-technopolymer product in a wide range of sizes, allowing you to create your aluminium tubing systems without any problems.



## SHORT INSTALLATION TIME

The quick and easy assembly of our piping systems is the result of an innovative technology, with an instant connection of the fitting components to the aluminium pipe.

## AIR QUALITY AND MAINTENANCE

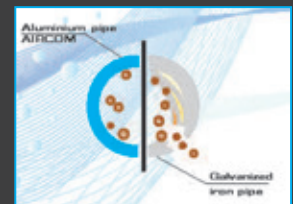
Owing to full technopolymer construction, air quality keeps constant features from compressor outlet up to all end user points. Minimum roughness of internal pipe surfaces allows optimal air flow. The high quality and high resistance features of our fittings will significantly reduce maintenance costs.

## MODULARITY AND RESISTANCE

Our modular and lightweight technopolymer systems are an optimal solution to reduce installation time.

Owing to careful study of components and of materials, our fittings feature noticeable resistance to corrosion, mechanical shocks and thermal variations.

Quick Line technopolymer is the most advanced evolution in the field of systems for compressed air and pressurised fluids distribution.



# TECHNOPOLYMER SYSTEM FITTINGS

Technopolymer fittings are specifically designed for use with Aluminium tube up to Ø 63mm.  
For specific application guidance please speak to our technical team.

Working Temperature:  
-15°C to +65°C

## Straight Couplings



### Equal, Tube x Tube

9183	Ø mm
QLMAPA016	16
QLMAPA020	20
QLMAPA025	25
QLMAPA032	32
QLMAPA040	40
QLMAPA050	50
QLMAPA063	63

Tech Sheet 110822



### Reducer, Tube x Tube

9183	Ø mm	Ø mm
QLRIDPA025020	25	20
QLRIDPA032025	32	25
QLRIDPA040025	40	25
QLRIDPA040032	40	32
QLRIDPA050040	50	40

Tech Sheet 110822



### Sliding Coupling Tube x Tube (No Internal Stopper)

9183	Ø mm
QLMASPA032	32
QLMASPA040	40
QLMASPA050	50
QLMASPA063	63

Tech Sheet 110822



### Male Stud, BSPT Thread x Tube

9183	Ø mm	Thread
QLMNPA016048	16	1/2"
QLMNPA020048	20	1/2"
QLMNPA020068	20	3/4"
QLMNPA025048	25	1/2"
QLMNPA025068	25	3/4"
QLMNPA025088	25	1"
QLMNPA032088	32	1"
QLMNPA032108	32	1.1/4"
QLMNPA040088	40	1"
QLMNPA040108	40	1.1/4"
QLMNPA040128	40	1.1/2"
QLMNPA050128	50	1.1/2"
QLMNPA050168	50	2"
QLMNPA063168	63	2"

Tech Sheet 110822

## Elbows



### 90° Equal, Tube x Tube

9183	Ø mm
QLG090PA016	16
QLG090PA020	20
QLG090PA025	25
QLG090PA032	32
QLG090PA040	40
QLG090PA050	50
QLG090PA063	63

Tech Sheet 110822



### 45° Equal, Tube x Tube

9183	Ø mm
QLG045PA020	20
QLG045PA025	25
QLG045PA032	32
QLG045PA040	40
QLG045PA050	50
QLG045PA063	63

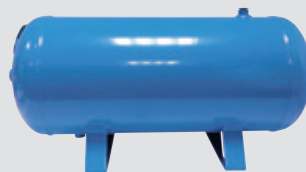
Tech Sheet 110822



### 90° Male Stud, BSPT x Tube

9183	Ø mm	Thread
QLG090PM020048	20	1/2"
QLG090PM025048	25	1/2"
QLG090PM025068	25	3/4"

Tech Sheet 110822



For Air Receivers  
see pages 433-434

Free design services available for reducing energy costs

# TECHNOPOLYMER SYSTEM FITTINGS

Technopolymer fittings are specifically designed for use with Aluminium tube up to Ø 63mm.  
For specific application guidance please speak to our technical team.

Working Temperature:  
-15°C to +65°C

## Tees



### Equal Tube x Tube

9183	Ø mm
QLTEPA016	16
QLTEPA020	20
QLTEPA025	25
QLTEPA032	32
QLTEPA040	40
QLTEPA050	50
QLTEPA063	63

Tech Sheet 110822



### Unequal, Reducing on Branch, Tube x Tube

9183	Ø mm	Ø mm
QLTRPA020016	20	16
QLTRPA025016	25	16
QLTRPA025020	25	20
QLTRPA032020	32	20
QLTRPA032025	32	25
QLTRPA040020	40	20
QLTRPA040025	40	25
QLTRPA040032	40	32
QLTRPA050020	50	20
QLTRPA050025	50	25
QLTRPA050032	50	32
QLTRPA050040	50	40
QLTRPA063020	63	20
QLTRPA063025	63	25
QLTRPA063040	63	40
QLTRPA063050	63	50

Tech Sheet 110822



### Female Stud BSPP, 3.06 mm, Branch x Tube

9183	Ø mm	Thread
QLTPPA020048	20	1/2"
QLTPPA025048	25	1/2"

Tech Sheet 110822

## Quick Branch, Saddle Clamp



### Tube x Tube

9183	Ø mm	Ø mm
QLDERPA025016	25	16
QLDERPA025020	25	20
QLDERPA032016	32	16
QLDERPA032020	32	20
QLDERPA040016	40	16
QLDERPA040020	40	20
QLDERPA040025	40	25
QLDERPA050016	50	16
QLDERPA050020	50	20
QLDERPA050025	50	25
QLDERPA063020	63	20
QLDERPA063025	63	25
QLDERPA063032	63	32
QLDERPA080020	80	20
QLDERPA080025	80	25
QLDERPA080032	80	32
QLDERPA110025	110	25
QLDERPA110032	110	32

Tech Sheet 110822



### Female BSPP x Tube

9183	Ø mm	Thread
DIRDERFF025048	25	1/2"
DIRDERFF032048	32	1/2"
DIRDERFF040048	40	1/2"
DIRDERFF040068	40	3/4"
DIRDERFF050048	50	1/2"
DIRDERFF050068	50	3/4"
DIRDERFF063048	63	1/2"
DIRDERFF063068	63	3/4"
DIRDERFF063088	63	1"
DIRDERFF080048	80	1/2"
DIRDERFF080068	80	3/4"
DIRDERFF080088	80	1"
DIRDERFF110068	110	3/4"
DIRDERFF110088	110	1"

Tech Sheet 110822

## End Caps



### Tube

9183	Ø mm
QLCAPA016	16
QLCAPA020	20
QLCAPA025	25
QLCAPA032	32
QLCAPA040	40
QLCAPA050	50
QLCAPA063	63

Tech Sheet 110822

## Assembly Tools



### QL Nut Wrench

9183	Ø mm	Ø mm
QLCLE16020	16	20
QLCLE25032	25	32
QLCLE40050	40	50
QLCLE63	63	63

Tech Sheet 110822



### Pipe Fitting Insertion Meter

9183	Ø mm	Ø mm
QLMIS016080	16	80

Tech Sheet 110822

# VALVES

## Ball Valve Stainless Steel



### Tube x Tube

9183	Ø mm
QLVAINOX025	25
QLVAINOX032	32
QLVAINOX040	40
QLVAINOX050	50
QLVAINOX063	63
QLVAINOX080	80

Tech Sheet 110823



### Female BSPP x Tube

9183	Ø mm	Thread
QLVAINOXMF025088	25	1"
QLVAINOXMF032128	32	1.1/2"
QLVAINOXMF040128	40	1.1/2"
QLVAINOXMF050168	50	2"
QLVAINOXMF063168	63	2"
QLVAINOXMF080248	80	2"

Tech Sheet 110823

## Ball Valve Nickel Plated Brass



### Female BSPP x Tube

9183	Ø mm	Thread
QLVAF016048	16	1/2"
QLVAF020048AL	20	1/2"
QLVAF025068AL	25	3/4"

Tech Sheet 110823



### Male BSPT x Tube

9183	Ø mm	Thread
QLVAM016048	16	1/2"
QLVAM020048AL	20	1/2"
QLVAM025068AL	25	3/4"

Tech Sheet 110823

## Butterfly Valve Stainless Steel



### Tube x Tube

9183	Ø mm
QLVALFAR110	110

Tech Sheet 110823



For Ball Valves  
see pages 922-955

# ALUMINIUM SYSTEM



## LIGHTWEIGHT, BUT POWERFUL

The Quick Line aluminium product range comes in the following diameters:

20, 25, 32, 40, 50, 63, 80, and 110 mm

A careful study and design of dimensions and materials enable us to achieve a lightweight but powerful, all-aluminium product in a wide range of sizes. With the Ø 110 mm size you will have a powerful flow rate potential, allowing you to create compressor rooms without any problems.



## SHORT INSTALLATION TIME

The quick and easy assembly of our piping systems is the result of an innovative technology, with an instant connection of the fitting components to the aluminium pipe.

## AIR QUALITY AND MAINTENANCE

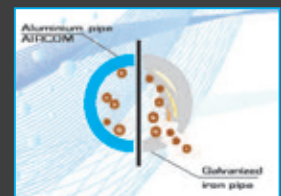
Owing to full aluminium construction, air quality keeps constant features from compressor outlet up to all end user points. Minimum roughness of internal pipe surfaces allows optimal air flow. The high quality and high resistance features of our fittings will significantly reduce maintenance costs.

## MODULARITY AND RESISTANCE

Our modular and lightweight aluminium systems are an optimal solution to reduce installation time.

Owing to careful study of components and of materials, our fittings feature noticeable resistance to corrosion, mechanical shocks and thermal variations.

Quick Line aluminium is the most advanced evolution in the field of systems for compressed air and pressurised fluids distribution.



# FITTINGS, ALUMINIUM SYSTEM

Swap your Aluminium fittings for echnopolymer fittings for sizes up to Ø 63mm to reduce installation costs. For specific application guidance please speak to our echnical team.

 Working Temperature:  
-30°C to +80°C

## Straight Couplings



### Equal, Tube x Tube

9183	Ø mm
QLMAAL020	20
QLMAAL025	25
QLMAAL032	32
QLMAAL040	40
QLMAAL050	50
QLMAAL063	63
QLMAAL080	80
QLMAAL110	110

Tech Sheet 110824



### Sliding Coupling, Tube x Tube (No Internal Stopper)

9183	Ø mm
QLMASAL032	32
QLMASAL040	40
QLMASAL050	50
QLMASAL063	63
QLMASAL080	80

Tech Sheet 110824



### Female Stud, BSPP Thread x Tube

9183	Ø mm	Thread
QLMPMAL020048	20	1/2"
QLMPMAL020068	20	3/4"
QLMPMAL025068	25	3/4"
QLMPMAL025088	25	1"
QLMPMAL032108	32	1.1/4"
QLMPMAL040128	40	1.1/2"
QLMPMAL050168	50	2"
QLMPMAL063208	63	2.1/2"

Tech Sheet 110824



### Male Stud, BSPT Thread x Tube

9183	Ø mm	Thread
QLMNMAL020048	20	1/2"
QLMNMAL020068	20	3/4"
QLMNMAL025068	25	3/4"
QLMNMAL025088	25	1"
QLMNMAL032108	32	1.1/4"
QLMNMAL040128	40	1.1/2"
QLMNMAL050168	50	2"
QLMNMAL063168	63	2"
QLMNMAL063208	63	2.1/2"
QLMNMAL080208	80	2.1/2"
QLMNMAL080248	80	3"

Tech Sheet 110824

## Elbows



### 90° Equal, Tube x Tube

9183	Ø mm
QLG090AL020	20
QLG090AL025	25
QLG090AL032	32
QLG090AL040	40
QLG090AL050	50
QLG090AL063	63
QLG090AL080	80
QLG090AL110	110

Tech Sheet 110824



### 45° Equal, Tube x Tube

9183	Ø mm
QLG045AL020	20
QLG045AL025	25
QLG045AL032	32
QLG045AL040	40

Tech Sheet 110824



### 45° Female Stud, BSPP x Tube

9183	Ø mm	Thread
QLG045FAL020048	20	1/2"
QLG045FAL025048	25	1/2"
QLG045FAL025068	25	3/4"

Tech Sheet 110824



### 90° Male Stud, BSPT x Tube

9183	Ø mm	Thread
QLG090MAL020048	20	1/2"
QLG090MAL025048	25	1/2"
QLG090MAL025068	25	3/4"

Tech Sheet 110824

Free design services available for reducing energy costs

# FITTINGS, ALUMINIUM SYSTEM

## Tees



### Equal, Tube x Tube

9183	Ø mm
QLTEAL020	20
QLTEAL025	25
QLTEAL032	32
QLTEAL040	40
QLTEAL050	50
QLTEAL063	63
QLTEAL080	80
QLTEAL110	110

Tech Sheet 110824



### Unequal, Reducing on Branch, Tube x Tube

9183	Ø mm	Ø mm
QLTRAL025020	25	20
QLTRAL032020	32	20
QLTRAL040020	40	20
QLTRAL040025	40	25

Tech Sheet 110824



### Female Stud BSPP, Branch x Tube

9183	Ø mm	Thread
QLTPAL020048	20	1/2"
QLTPAL025068	25	3/4"
QLTPAL032088	32	1"
QLTPAL040108	40	1.1/4"
QLTPAL050128	50	1.1/2"
QLTPAL063168	63	2"
QLTPAL080208	80	2.1/2"
QLTPAL110248	110	3"

Tech Sheet 110824

## End Caps



### Equal, Tube x Tube

9183	Ø mm
QLCAAL020	20
QLCAAL025	25
QLCAAL032	32
QLCAAL040	40
QLCAAL050	50
QLCAAL063	63
QLCAAL080	80

Tech Sheet 110824

## Blind Flange



### Tube

9183	Ø mm
DIRFC110DIN	110

Tech Sheet 110824

## Quick Branch (Saddle Clamp)



### Tube x Tube

9183	Ø mm	Ø mm
QLDERAL025020	25	20
QLDERAL032020	32	20
QLDERAL040020	40	20
QLDERAL040025	40	25
QLDERAL050020	50	20
QLDERAL050025	50	25
QLDERAL063020	63	20
QLDERAL063025	63	25
QLDERAL063032	63	32
QLDERAL080020	80	20
QLDERAL080025	80	25
QLDERAL080032	80	32
QLDERAL110020	110	20
QLDERAL110025	110	25
QLDERAL110032	110	32

Tech Sheet 110824

## Flanged Couplings



### Flange x Tube

9183	Ø mm	DIN Flange
QLMFLAL080248DIN	80	3"
QLMFLAL110328DIN	110	4"

Tech Sheet 110824



### Flange x Stem

9183	Ø mm	DIN Flange
QLTFLAL80248DIN	80	3"
QLTFLAL110328DIN	110	4"

Tech Sheet 110824

## Assembly Tools



### QL Nut Wrench for Aluminium

9183	Ø mm	Ø mm
QLCLEAL020025	20	25
QLCLEAL032040	32	40
QLCLEAL050	50	50
QLCLEAL063	63	63
QLCLEAL080	80	80

Tech Sheet 110824



### Pipe Fitting Insertion Meter

9183	Ø mm	Ø mm
QLMISAL020110	20	110

Tech Sheet 110824

Free design services available for reducing energy costs



# 6" (168.3MM) TUBING & FITTINGS SYSTEM

A full range of ready-to-use, pre-grooved 168.3 mm - 6" aluminium products.

In large industrial sites, main compressed air distribution networks need a flow rate of 3,000 <sup>3</sup> per hour.

## Compatibility and Specification

### Deliverable Fluids:

- Compressed air
- Inert gases
- Vacuum
- Other (please contact sales office for more information)

## Vacuum Level:

99% (about 10 mbar) approximately

Working Temperature: -30°C to +80°C

Maximum Working Pressure: 12 bar

## Coated Aluminium Pipe with Grooved Ends



### Compressed Air, 5.8 Metres, Blue

9260	Ø mm
QLTUAL168S	168.3
Tech Sheet 110825	

## Elbow with Grooved Ends



### 90° Equal, Tube x Tube

9260	Ø mm
QLGO90AL168	168.3
Tech Sheet 110825	



### 45° Equal, Tube x Tube

9260	Ø mm
QLGO45AL168	168.3
Tech Sheet 110825	

## Tee with Grooved Ends



### Equal, Tube x Tube

9260	Ø mm
QLTEAL168	168.3
Tech Sheet 110825	

## Straight Rigid Coupling with Grooved Ends



### Equal, Tube x Tube

9260	Ø mm
QLMAAL168	168.3
Tech Sheet 110825	

## End Caps with Grooved Ends



### Tube

9260	Ø mm
QLCAAL168	168.3
Tech Sheet 110825	

## Expansion Joint



### Flanged DIN

9260	Ø mm
DIRDIL168DIN	168.3
Tech Sheet 110825	

DIRDIL168DIN requires 1x QLFLA168480DIN on each side.

## Flanged Adaptor



### Tube x Flange DIN

9260	Ø mm	DIN Flange
QLFLA168480DIN	168.3	4"
Tech Sheet 110825		

## Butterfly valve



### Flange DIN Coupling

9260	Ø mm
QLVALFAR168	168.3
Tech Sheet 110825	

## Pipe Bracket



### M10 Insert Pieces

9260	Ø mm	Insert
DIRFEM10168CF	168.3	M10
Tech Sheet 110825		

## Portable Manual Grooving Tool for 6" (168.3 mm) Tube



### Manual Operation with Ratchet Handle

9260	Ø mm
DIRRULLUNI	168.3
Tech Sheet 110825	

# MANIFOLDS, ALUMINIUM TUBING SYSTEM

## Single Port



**1/2" BSPP Inlet x 1/2" BSPP Outlet, with Drain Option, 1/4" (Blind)**

9183	No. of Inlets	No. of Outlets
DIRAPMAL048048	1	1
Tech Sheet 110826		



**With Fitting Holder Safety Block**

9183	Inlet mm	Outlet
DAPG045FAL020048	20	1/2"
DAPG045FAL025048	25	1/2"
DAPG045FAL025068	25	3/4"
Tech Sheet 110826		

## Double Port



**1/2" BSPP Inlet x 1/2" BSPP Outlet, with Drain Option, 1/4" (Blind)**

9183	No. of Inlets	No. of Outlets
APLALL048	1	2
Tech Sheet 110826		

**3/4" BSPP Inlet x 1/2" BSPP Outlet, with Drain Option, 1/4" (Blind)**

9183	No. of Inlets	No. of Outlets
APLALL068	1	2
Tech Sheet 110826		

## 3 Port



**1/2" BSPP Inlet x 1/2" BSPP Outlet, with Drain Option, 1/4" (Blind)**

9183	No. of Inlets	No. of Outlets
DIRAPFRLAL048048	1	3
Tech Sheet 110826		

## 4 Port



**1/2" BSPP Inlet x 1/2" BSPP Outlet, with Drain Option, 1/4" (Blind)**

9183	No. of Inlets	No. of Outlets
DIRAPLAL048048	1	4
Tech Sheet 110826		

**3/4" BSPP Inlet x 1/2" BSPP Outlet, with Drain Option, 1/4" (Blind)**

9183	No. of Inlets	No. of Outlets
DIRAPLAL068068	1	4
Tech Sheet 110826		

## 5 Port



**3/4" BSPP Inlet x 3/4" & 1/2" BSPP Outlet, with Drain Option, 1/4" (Blind)**

9183	No. of Inlets	No. of Outlets A (side)	No. of Outlet B (front)
DIRPMUAL120	1	2	3
Tech Sheet 110826			

## 6 Port



**3/4" BSPP Inlet x 3/8" BSPP Outlet, No Drain**

9183	No. of Inlets	No. of Outlets
APLALLMUL068038	1	6
Tech Sheet 110826		

**1/2" BSPP Inlet x 3/4" BSPP Outlet, No Drain**

9183	No. of Inlets	No. of Outlets
APLALLMUL068048	1	6
Tech Sheet 110826		

## 7 Port



**3/4" BSPP Inlet x 1/2" BSPP Outlet, with Drain Option, 1/4" (Blind)**

9183	No. of Inlets	No. of Outlets
DIRPMUAL200	1	7
Tech Sheet 110826		

## Drain Valve



**1/4" BSPP Male**

9183	Thread
DIRVSP028	1/4"
Tech Sheet 110826	

# SYSTEM ACCESSORIES

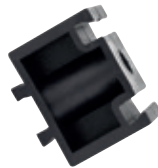
## Pipe Brackets



### M8 Insert Pieces

9183	Ø mm	Insert
DIRFEM8016CF	16	M8
DIRFEM8020CF	20	M8
DIRFEM8025CF	25	M8
DIRFEM8032CF	32	M8
DIRFEM8040CF	40	M8
DIRFEM8050CF	50	M8
DIRFEM8063CF	63	M8
DIRFEM8080CF	80	M8
DIRFEM8110CF	110	M8

Tech Sheet 110827



### Pipe Bracket Spacers

9183	Ø mm	Ø mm
DIRSPE020032	20	32
DIRSPE040063	40	63

Tech Sheet 110827

## Assembly Lubrication



### Lubrication Fluid (Oil Free)

9183	Size ml
DIRLUB0750	750

Tech Sheet 110844

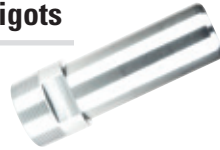


### Lubrication Gel (Oil Free)

9183	Size ml
DIRLUBGEL0950	950

Tech Sheet 110827

## Aluminium Spigots

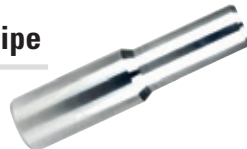


### Male BSPP x Stem

9183	Ø mm	Thread
QLPUNM016038	16	3/8"
QLPUNM020048	20	1/2"
QLPUNM020068	20	3/4"
QLPUNM025088	25	1"
QLPUNM032108	32	1.1/4"
QLPUNM040128	40	1.1/2"
QLPUNM050168	50	2"
QLPUNM063168	63	2"
QLPUNM080248	80	3"

Tech Sheet 110827

## Reduction Pipe

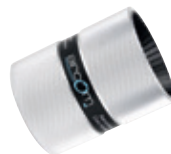


### Stem x Stem

9183	Ø mm	Ø mm
QLRIDTU025020	25	20
QLRIDTU032020	32	20
QLRIDTU032025	32	25
QLRIDTU040025	40	25
QLRIDTU040032	40	32
QLRIDTU050032	50	32
QLRIDTU050040	50	40
QLRIDTU063040	63	40
QLRIDTU063050	63	50
QLRIDTU080050	80	50
QLRIDTU080063	80	63
QLRIDTU110050	110	50
QLRIDTU110063	110	63
QLRIDTU110080	110	80

Tech Sheet 110827

## Deburrers



### To suit Tube Sizes 16mm - 110mm

9183	Ø mm	Ø mm
DIRSM016050	16	50
DIRSM063110	63	110

Tech Sheet 110827



### To suit Tube Sizes 16mm - 168.3mm

9183	Ø mm	Nominal Bore mm
DIRSBVUNI	16	168.3

Tech Sheet 110827

## Multilayer Pipe Bending Tools



### Bending Gun

9260	Ø mm	Ø mm
DIRPIEGTMLS1625	16	25

Tech Sheet



### Calibrator & Chamfering Tool

9260	Ø mm	Ø mm
DIRCALML016025	16	25

Tech Sheet 110827



### Outer Bending Spring

9260	Ø mm
DIRMOLMLEST016	16
DIRMOLMLEST020	20
DIRMOLMLEST025	25

Tech Sheet 110827



### Inner Bending Spring

9260	Ø mm
DIRMOLMLINT016	16
DIRMOLMLINT020	20
DIRMOLMLINT025	25

Tech Sheet 110827

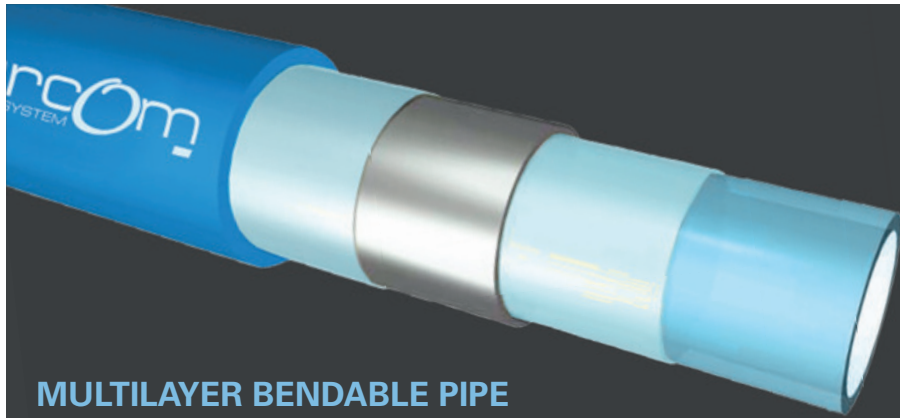
## Flexible Hoses



### Stem x Stem

9183	Ø mm
QLFLEX020	20
QLFLEX025	25
QLFLEX032	32
QLFLEX040	40
QLFLEX063	63

Tech Sheet 110827



## MULTILAYER BENDABLE PIPE

# Bendable, resistant & specific for compressed air

Due to its unique structure, Aircom's multilayer pipe for compressed air delivers excellent physical and chemical features, typical of PE-RT.

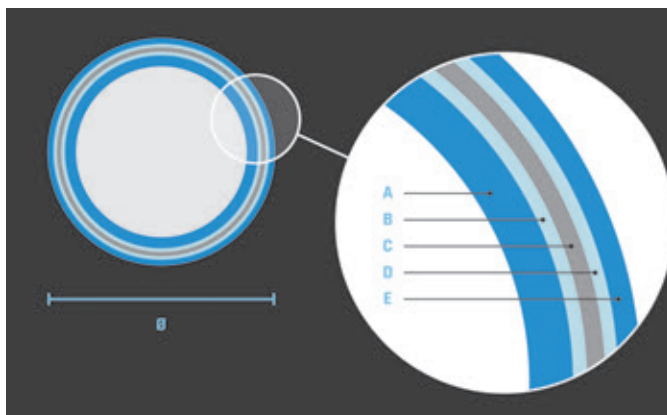
The structure of the multilayer pipe incorporates an aluminium layer, providing resistance to high pressures and high operating temperatures.

The lightness of the material enables easy shaping of piping sections, making installation trouble-free even in problem areas.

## AIRCOM'S MULTILAYER PIPE ADVANTAGES

- ✓ Specifically for compressed air piping.
- ✓ Easy creation of shaped piping sections.
- ✓ Easy to fit around obstacles, corners, pillars, etc.
- ✓ Easy installation owing to its bendability.
- ✓ Linear thermal expansion factor similar to aluminium pipe.
- ✓ Corrosion resistant.
- ✓ Outstanding durability.

## LAYERS AND MATERIALS



- A PE-RT (inner layer, colourless)
- B Adhesive layer
- C Aluminium layer, overlapped and ultrasonic welded
- D Adhesive layer
- E PE-RT (outer layer, blue)



## AIR PIPE LINE "INFINITY" SERIES

Complete selection of fittings and aluminum pipes for air networks.

Patented drop fitting solution and more special features

Fastest assembly operations with ready-to-use and reusable fittings for all sizes

10 year warranty.

MADE IN ITALY

  
EXCELLENT SOLUTIONS  
IN FLUIDTECHNOLOGY

# ALUMINIUM RING MAIN SYSTEM



**Working Temperature:**  
-20°C to +80°C

**Maximum Working Pressure:**  
16 bar

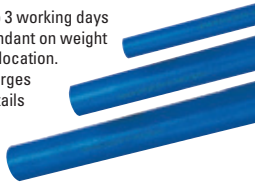
**Material:**  
Adaptors: Brass, Nickel Plated  
(Ø 50-63 Aluminium), Nitrile Seals  
Silicone free

**Application:**  
Compressed air, Vacuum,  
Inert gas (NITROGEN-ARGON)

**Compliance:**  
2014/68/EU(PED), REACH EC N°1907/2006,  
ROHS 2011/65/EU, ASME B31.1, B31.3

## Aluminium Tubing

Tubing may take up to 3 working days to be delivered, dependant on weight and delivery address location. Addition carriage charges may apply. For full details please contact sales.



### 4 Metre Lengths

0255	OD mm
90000011Y9B5	20
90000011J4B5	25
90000011J9B5	32
90000011K4B5	40
90000011W0B5	50
90000011W3B5	63

Tech Sheet 1609

### 6 Metre Lengths

0255	OD mm
900006020BL	20
900006025BL	25
900006032BL	32
900006040BL	40
900006050BL	50
900006063BL	63

Tech Sheet 1609

## Straight Adaptors



### Male Thread, BSPT

0255	OD mm	Thread
9001000001	20	1/2"
9001000009	20	3/4"
9001000011	25	1/2"
9001000002	25	3/4"
9001000003	32	1"
9001000013	40	1"
9001000004	40	1.1/4"
9001000007	40	1.1/2"
9001000014	50	1"
9001000005	50	1.1/2"
9001000012	50	2"
9001000006	63	2"
9001000008A	63	2.1/2"

Tech Sheet 1610

### Female Thread, BSPP

0255	OD mm	Thread
9003000001	20	1/2"
9003000002	25	3/4"
9003000003	32	1"
9003000004	40	1.1/4"

Tech Sheet 1610



## Elbow Adaptors



### Male Thread, BSPT

0255	OD mm	Thread
9015000001	20	1/2"
9015000002	25	3/4"
9015000003	32	1"

Tech Sheet 1611



### Female Thread, BSPP

0255	OD mm	Thread
9016000001	20	1/2"
9016000002	25	3/4"
9016000003	32	1"
9016000004	40	1.1/4"

Tech Sheet 1611



### Bracketed, Female Thread, BSPP

0255	OD mm	Thread
9060000001	20	1/2"
9060000002	25	3/4"
9060000003	32	1"

Tech Sheet 1611

## Tee Adaptors



### Female Thread, BSPP

0255	OD mm	Thread
9023600006	20	3/8"
9023600007	20	1/2"
9023600001	25	3/8"
9023600008	25	1/2"
9023600002	32	1/2"
9023600003	40	1/2"
9023600017A	63	1/2"
9023600005	63	3/4"
9023600018A	63	1"

Tech Sheet 10557

## Tee Adaptors with Condense Exhaust



### Female Thread, BSPP

0255	OD mm	Thread
9025000017A	63	1/2"

Tech Sheet 10557

## Straight Connectors



### Equal

0255	OD mm
9004000001	20
9004000002	25
9004000003	32
9004000004	40
9004000006	63

Tech Sheet 1614

# ALUMINIUM RING MAIN SYSTEM



## Elbow Connectors



### Equal 90°

0255	OD mm
9013000001	20
9013000002	25
9013000003	32
9013000004	40
9013000005	50
9013000006	63

Tech Sheet 1611



### Equal 135°

0255	OD mm
9014000001	20
9014000002	25
9014000003	32
9014000004	40
9014000005	50

Tech Sheet 1611

## Tee Connectors



### Equal

0255	OD mm
9023000001	20
9023000002	25
9023000003	32
9023000004	40
9023000005	50
9023000006	63

Tech Sheet 10559



### Equal and Reducing Branch

0255	OD mm	OD mm
9023500013	20	20
9023500001	25	20
9023500002	32	20
9023500003	32	25
9023500004	40	20
9023500005	40	25
9023500008	50	25

Tech Sheet 10564

## Tee Connectors with Condense Exhaust



### Equal and Reducing Branch

0255	OD mm
9025900001	20-20-20
9025900002	25-20-25
9025900003	32-20-32
9025900004	40-20-40
9025900005	50-20-50

Tech Sheet 10559

## End Caps



0255	OD mm
9061000001	20
9061000002	25
9061000003	32
9061000004	40
9061000006	63

Tech Sheet 1612

## Reducers



0255	OD mm	OD mm
9062000001	25	20
9062000002	32	20
9062000003	32	25
9062000005	40	25
9062000006	40	32
9062000011	50	25
9062000007	50	32
9062000008	50	40
9062000009A	63	40
9062000010A	63	50

Tech Sheet 1613

## Deburring Tool



### For Aluminium Tubing 20-40mm

0255
9088000001

## Support Collars



### Technopolymer, M6 Thread

0255	OD mm
9081500001	20
9081500002	25
9081500003	32
9081500004	40
9081500005	50
9081500006	63

Tech Sheet 10567



### Spacer

0255
9081700001

Tech Sheet 60110

## Wall Mount Female Manifolds, Aluminium



### BSPP

0255	OD mm	Thread
9060200001	20	1/2"
9060200002	25	1/2"

Tech Sheet 10560



### 2 Way, BSPP

0255	Inlet Size	Outlet Size	No of Outlets
9064200001	1/2"	1/2"	2
9064200002	3/4"	1/2"	2

Tech Sheet 10576



### 4 Way, BSPP


0255	Inlet Size	Outlet Size	No of Outlets
9064400001	1/2"	1/2"	4
9064400002	3/4"	1/2"	4

Tech Sheet 10577

# ALUMINIUM RING MAIN SYSTEM

## Wall Mount Female Manifolds, Plastic

 Working Temperature:  
-20°C to +50°C

 Maximum Working  
Pressure: 15 bar



### Type VDK 10, BSPP

0255	Inlet Size	Outlet Size	No of Outlets
VDK10	1/2"	1/2"	1



### Type VDK 138, BSPP

0255	Inlet Size	Outlet Size	No of Outlets
VDK138	1/2"	3/8"	1



### Type VDK 20, BSPP

0255	Inlet Size	Outlet Size	No of Outlets
VDK20	1/2"	1/2"	2



### Type VDK 21, BSPP

0255	Inlet Size	Outlet Size	No of Outlets
VDK21	2 x 1/2"	1/2"	2



### Type VDK 30, BSPP

0255	Inlet Size	Outlet Size	No of Outlets
VDK30	3/4"	1/2"	3

### Type VDK 31, BSPP

0255	Inlet Size	Outlet Size	No of Outlets
VDK31	2 x 3/4"	1/2"	3



### Type VDK 34, BSPP

0255	Inlet Size	Outlet Size	No of Outlets
VDK34	1/2"	1/2"	3



### Type VDK 35, BSPP

0255	Inlet Size	Outlet Size	No of Outlets
VDK35	2 x 1/2"	1/2"	3

## Saddle Clamp Connectors



0255	OD A mm	OD B mm
9024000004	32	25
9024000006	40	25
9024000007	50	20
9024000010	63	20
9024000011	63	25

Tech Sheet 10565

## Tube Drilling Jigs & Drill Bits



### Tube Drilling Jigs

0255	OD mm
9024200001	32
9024200002	40
9024200004	63

Tech Sheet 10567



### Drill Bits for Drilling Jig

0255	To Suit
9024100001	32 & 40
9024100002	50 & 63

Tech Sheet 10566

## Ball Valves



### Tube x Tube

0255	OD mm
9070000001	20
9070000002	25
9070000003	32
9070000004	40
9070000005	50
9070000006	63

Tech Sheet 10570



### Tube x Male Thread, BSPT

0255	OD mm	Thread
9072000001	20	1/2"
9072000002	25	3/4"

Tech Sheet 10572



# AIRNET PIPEWORK SYSTEM

## Airnet Aluminium Air Pipe



### Blue Compressed Air Pipe, 5.70m Lengths

1450	Size mm	Length Metres	Quantity
2811-4000-05	40	5.70	5



### Blue S Bends

1450	Size mm
2811-1067-05	20 x 440
2811-2067-05	25 x 460

## Airnet Connectors

### Equal Straight Connector

1450	Size mm
2811-1002-80	20
2811-2002-80	25
2811-4002-80	40
2811-5002-80	50



### Reducing Straight Connector

1450	Size mm
2811-2121-80	25 to 20
2811-4221-80	40 to 25



### Male Stud Connector

1450	Size
2811-1017-80	20mm x R1/2"
2811-2117-80	25mm x R3/4"
2811-2217-80	25mm x R1"
2811-4417-80	40mm x R1.1/2"
2811-5417-80	50mm x R1.1/2"
2811-5517-80	50mm x R2"
2811-6517-80	63mm x R2"
2811-6617-80	63mm x R2.1/2"
2811-7717-80	80mm x R3"



### Wall Mounting Connector ISO228

1450	Inlet mm	Outlet BSPP
2811-1023-80	20	1/2" x 3
2811-2023-80	25	1/2" x 3



### Wall Mounting Connector Threaded

1450	Inlet	Outlet
2811-0025-80	1/2"	1/2" x 1
2811-1025-80	3/4"	1/2" x 1



### End Cap

1450	Size mm
2811-1006-80	20
2811-2006-80	25
2811-4006-80	40
2811-5006-80	50



For **Condensate Management**  
see page 435



# AIRNET PIPEWORK SYSTEM



## Airnet Elbows & Tees



### Equal 90° Elbow

1450	Size mm
2811-1003-80	20
2811-2003-80	25
2811-4003-80	40
2811-5003-80	50
2811-6003-80	63



### Equal 45° Elbow

1450	Size mm
2811-2004-80	25
2811-4004-80	40



### Equal Tee

1450	Size mm
2811-1005-80	20
2811-2005-80	25
2811-4005-80	40



### Reducing Tee

1450	Size A mm	Size B mm
2811-4107-80	40	20
2811-4207-80	40	25



### Reducing Tee, Threaded Branch

1450	Inlet/Outlet mm	Reduced Branch
2811-1008-80	20	G1/2"
2811-2008-80	25	G1/2"
2811-2108-80	25	G3/4"
2811-4208-80	40	G1"
2811-5208-80	50	G1"



For Air Receivers &  
Accessories  
see pages 433-435

## Airnet Quickdrops & Ball Valves



### Quickdrop

1450	Inlet mm	Outlet mm
2811-2110-80	25	20
2811-4110-80	40	20



### Quickdrop, Threaded Outlet

1450	Inlet mm	Outlet
2811-2011-80	25	G1/2"



### Ball Valve

1450	Size mm
2811-1051-81	20
2811-2051-81	25
2811-4051-81	40



### Ball Valve Airnet to ISO228 Female

1450	Size
2811-1152-81	20mm x G3/4"
2811-2252-81	25mm x G1"
2811-4452-81	40mm x G1.1/2"

## Airnet Piping Accessories



### Pipe Clips

1450	Size mm	Connection
2811-1022-20	20	M6
2811-2022-20	25	M6
2811-4022-20	40	M6



### Screw Beam Clamp

1450	Size	Range mm
2810-0036-10	M8	1.5 - 11



### Hang Clamp H Profil

1450	Size	Range mm
2810-0038-10	M8	1.5 - 4



### Sealing Gel

1450	Volume Litres
2810-0148-00	1

## Airnet Installation Tool Kits



### PF Series Installation Spanner

1450	Size mm
2811-1028-00	20 - 50



### Black Series Installation Spanner

1450	Size mm
2811-6028-00	63 - 80



### Belt Spanner

1450	Description
2810-8028-00	Covers 40 - 80 mm



### Pipe Deburrer

1450	Size mm
2810-0141-00	20 - 50



### Hole Deburrer Pen

1450	Type
2810-0641-00	Heavy-duty



### PF Series Tool Kit

1450	Size mm
2811-0045-00	Install Kit to suit 20-50mm Airnet Range



### Electrical Pipe Cutter

1450	Voltage
2810-0540-80	220 - 230

# RINGMAIN PIPE KITS (CARM)

## Simple, easy to install, basic air pipe systems at competitive pricing

Introducing **John Guest Compressed Air Ring Main (CARM) Kits** - the ultimate solution for compressed air piping systems installation. These kits come in three configurations, catering to 15 and 22 mm, and contain all the essential components for hassle-free assembly. No specialized knowledge or expensive equipment is needed, making it the go-to option for small ring-main installations.

### Versatile kits for any project:

- Workshops
- Garages
- Domestic applications
- Extension onto existing pipe systems

### 1 Bay Kit, 15mm Pipe & Fittings

- 1 x bay kit of John Guest 15mm O.D pipe and fittings
- 4 x 3m lengths of 15mm nylon pipe.
- 8 x pipe clips.
- 2 x elbows.
- 1 x flex with 1/2" bsp male stem adaptor.
- 1 x straight connector.
- 1 brass wingback wall bracket with 1 x PCL 19 series coupling

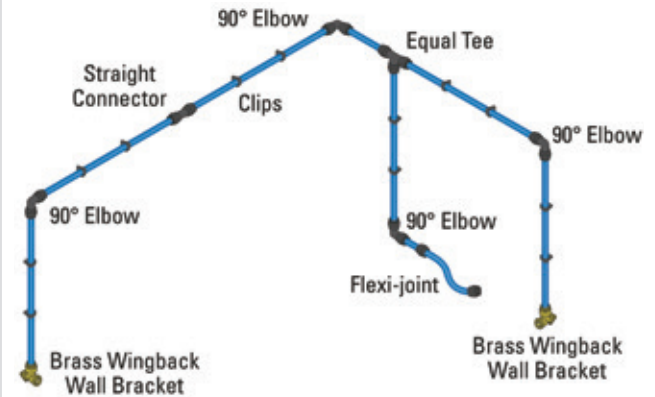


1400

CARMKIT-1

### 2 Bay Kit, 15mm Pipe & Fittings

- 2 x bay kit of John Guest 15mm OD pipe and fittings
- 6 x 3 metre lengths nylon pipe.
- 12 x clips.
- 4 x elbows.
- 1 x flex 15 with 1/2" bsp male stem adaptor.
- 2 x brass wingback wall brackets.
- 1 x straight connector.
- 1 x tee and 2 PCL 19 series couplings.

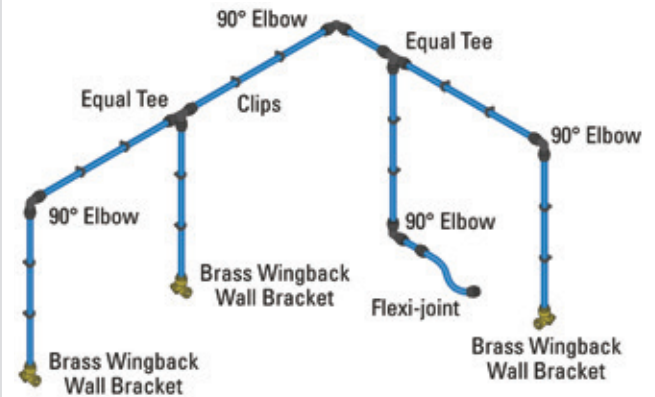


1400

CARMKIT-2

### 3 Bay Kit, 22mm Pipe & Fittings

- 3 x bay kit of John Guest 22mm OD pipe and fittings
- 7 x 3 metre lengths nylon pipe.
- 14 x pipe clips.
- 4 x elbows.
- 1 x flex 22 with 1/2" bsp, male stem adaptor.
- 3 x brass wingback wall brackets.
- 2 x straight connector.
- 2 x tee.
- 3 x PCL 19 series couplings and 3 x 3/4 x 1/2 reducing bush.
- 1 x PTFE Tape



1400

CARMKIT-3

## Easy to use Push-fit connectors for air line ring mains

The John Guest range of push-fit fittings and pipe provide the ideal connection from compressor receiver to air line service components through to complete ring main and take off points.

Using the John Guest push-fit system, a compressed air ring main can be installed quickly and easily, with potential time savings of at least 50% when compared to other installation methods.

No need to prepare threaded pipe or solvent, all the connections can be made with a simple push-fit action. The system is then immediately ready for use.

Complex assembly can be performed much more rapidly than with traditional methods and because fittings are easy to disconnect, systems can be altered or extended with much reduced production down time.

To make a connection, the tube is simply pushed in by hand, with the unique collet locking system then holding the tube firmly in place without deforming it or restricting flow.

*\*The fittings are produced in either tough engineering plastics material or in brass with Sizes 12mm to 28mm. They are intended for use with John Guest's nylon pipe, but can also be used with copper or aluminum alternatives.*

### Working Temperature:

-20°C to +70°C

### Working Pressure:

10 bar @ 23°C



## Making a connection

### Standard Fittings



#### Cut the pipe square

We recommend using the JG Pipe Cutter.



#### Push up to pipe stop



#### Pull to check secure

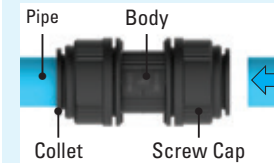
Test the system before use.



#### To disconnect

Ensure the system is depressurised. Push the collet towards the fitting and remove the pipe. The fitting can be reused.

### 28mm Fittings



28mm fittings also have a collet with stainless steel teeth and an 'O' ring.



After inserting the pipe, a screw cap is turned approx 1/4 turn. This locks the collet in place and reduces lateral and sideways movement of the pipe.



#### To disconnect

Turn the screw cap 1/4 turn, push in the collet and remove the pipe. The fitting and pipe can be reused.


# FAST-TRACK RING MAIN SYSTEM

## Fast-Track Tubing

### John Guest Part No. Cross Reference

400-3012	PA-RM1209-3M-20B
400-3015	PA-RM1512-3M-20B
400-3018	PA-RM1814-3M-20B
400-3022	PA-RM2218-3M-20B
400-3028	PA-RM2823-3M-10B

 Working Temperature:  
-20°C to +70°C

 Maximum Working Pressure:  
+23°C: 10 bar  
+70°C: 7 bar




### Nylon 12, 3 Metre Lengths

1400	OD mm	ID mm
400-3012	12	9
400-3015	15	12
400-3018	18	14
400-3022	22	18
400-3028	28	23

Tech Sheet 20629

N.B. Delivery may take up to 48 hours.

 Working Temperature:  
-20°C to +70°C

 Maximum Working Pressure:  
+23°C: 10 bar  
+70°C: 7 bar



### Blue Coated Aluminium, 3 Metre Lengths

1400	OD mm	ID mm
AL-RM1210-3M-20B	12	10
AL-RM1513-3M-20B	15	13
AL-RM1816-3M-20B	18	16
AL-RM2220-3M-20B	22	20
AL-RM2826-3M-10B	28	26

Tech Sheet 20629

N.B. Delivery may take up to 48 hours.

## Fast-Track Tube Clips



### 360° Pipe Retention, Tested to over 100lbs

1400	OD mm
405-1015	15
405-1022	22
405-1028	28
410-1522	Stand-off Spacer

Tech Sheet 20629

## U-Bend



1400	OD mm
PMUB15E	15

Tech Sheet 20629

## Straight Adaptor

\* No thread seal.



## BSPP Male

1400	OD mm	Thread
PM011213E	12	3/8"
PM011214E	12	1/2"
PM011514E	15	1/2"
PM011516E	15	3/4"
PM011814E	18	1/2"
PM012216E	22	3/4"

Tech Sheet 20629

## Stem Adaptor



## BSPP Male

1400	OD mm	Thread
PM051213E	12	3/8"
PM051214E	12	1/2"
PM051513E	15	3/8"
PM051514E	15	1/2"
PM051814E	18	1/2"
PM052214E	22	1/2"
PM052216E	22	3/4"

Tech Sheet 20629

## Equal Elbow



1400	OD mm
PM0312E	12
PM0315E	15
PM0318E	18
PM0322E	22
PM0328E	28

Tech Sheet 20629

## Stem Elbow



1400	OD mm	Stem OD mm
PM221212E	12	12
PM221515E	15	15
PM221818E	18	18
PM222222E	22	22

Tech Sheet 20629

## Equal Tee



1400	OD mm
PM0212E	12
PM0215E	15
PM0218E	18
PM0222E	22

Tech Sheet 20629

## Reducing Tee



1400	Ends OD mm	Branch OD mm
PM03018AE	18	15
PM3022AE	22	15

Tech Sheet 20629

# FAST-TRACK RING MAIN SYSTEM

## Straight Connector



1400	OD mm
PM0412E	12
PM0415E	15
PM0418E	18
PM0422E	22
PM0428E	28

Tech Sheet 20629

## Reducer



1400	Stem OD mm	OD mm
PM061512E	15	12
PM061815E	18	15
PM062215E	22	15
PM062218E	22	18
PM062815E	28	15

Tech Sheet 20629

## Flexi-joint

When long runs of nylon tube are used, it is recommended a flexi-joint is installed. With temperature change, the tube can expand and contract along the length. This will lead to an unsightly distortion to the run of tube.



1400	OD mm	Max Pressure PSI
FLEX-15	15	145
FLEX-22	22	145

Tech Sheet 20629

## Plug



### Black

1400	OD mm
PM0812R	12
PM0815E	15
PM0818E	18
PM0822E	22
PM0828E	28

Tech Sheet 20629

## Release Aid



1400	OD mm
15RA	15
22RA	22

Tech Sheet 20629

## Brass Straight Adaptors



### BSPT Male

1400	OD mm	Thread
MM011504N	15	1/2"
MM012206N	22	3/4"
MM012808N	28	1"

Tech Sheet 20629

## Brass Wingback Elbow



### BSPP Female

1400	OD mm	Thread
PM15WB	15	1/2"
PM22WB	22	3/4"

Tech Sheet 20629

## Brass Stem Adaptors



### Male Thread

1400	OD mm	Thread
MM051504N	15	1/2" BSPT
MM052206N	22	3/4" BSPT
MM052818N	28	1" BSPT
MM052228N	22	1" NPT
MM052828N	28	1" NPT

Tech Sheet 20629



### BSPP Female

1400	OD mm	Thread
MM501514N	15	1/2"
MM502216N	22	3/4"

Tech Sheet 20629



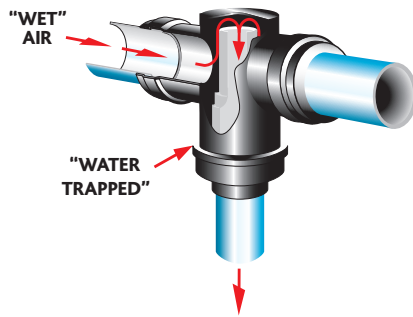
You might also need...  
**Polyurethane & Nylon Tube**  
 ...see pages 895-917



# FAST-TRACK RING MAIN SYSTEM

## Water Trap Tee

The Fast-Track Water Trap Tee solves the on-going problem of moisture in a Ring Main system and provides the easy alternative to the need to install "Swan Necks". The ingenious inside arrangement of the fitting allows air to flow, with minimum head loss, from the main to take-off point without allowing water to follow. The moisture is retained in the line to be drawn off at some suitable location.



### Water Trap Tee Installation:

It is of vital importance for the correct function of the Water Trap Tee that the air ring main within which the Tee is installed is near horizontal and that the outlet port faces vertically downwards. Markings to indicate correct orientation have been moulded onto the body to assist installation.



1400	OD mm
<b>PMTT22E</b>	22
Tech Sheet 20629	

## Water Trap Tee Convertor



### Converts a 28mm Tee to a Water Trap Tee

1400	Size mm
<b>WTC28</b>	28
Tech Sheet 20629	

## Collet Covers

Collet Covers prevent accidental removal or tampering with piping. The pipe can be inserted with the Collet Cover already attached to the fitting or the cover can slide into position afterwards.

We recommend covers be fitted when pipework is hidden inside walls, ceilings etc.

Collet Covers can be removed to allow the pipe to be disconnected as and when required.



### Black

1400	OD mm
<b>PM1915E</b>	15
<b>PM1922E</b>	22
Tech Sheet 20629	

## Pipe Clips & Spacers

### Clip



### Spacer



### Black

1400	Description	OD mm
<b>PC15E</b>	Clip	15
<b>PC22E</b>	Clip	22
<b>PC28E</b>	Clip	28
<b>PCSE</b>	Spacer	-
Tech Sheet 20629		

## Pipe Cutters

**Please Note:** No spare blades available for this cutter.

The blade can be resharpened.



1400	Max Reach mm
<b>JG-TSP</b>	22
Tech Sheet 20629	

## Aluminium Pipe Cutter



1400	OD mm
<b>ALU-CUTTER15</b>	15
<b>ALU-CUTTER22</b>	22
<b>ALU-CUTTER28</b>	28
Tech Sheet 20629	

## End Stop



1400	OD mm
<b>PM4612E</b>	12
<b>PM4615E</b>	15
<b>PM4622E</b>	22
Tech Sheet 20629	

## Porting Block



### 1/2" BSPP Female

1400	Outlets
<b>JG-L-WSK</b>	5 x 1/2" BSPP
Tech Sheet 20629	

## Aluminium Wall Box



### BSPP

1400	Inlet Size	Outlet Size	No. of Outlets
<b>JGWALLBOX 1/2</b>	1/2"	1/2"	3
<b>JGWALLBOX 3/4</b>	3/4"	1/2"	3
Tech Sheet 20629			



## Applications:

- Drinkable water systems
- Irrigation systems
- Fertilizing irrigation systems
- Wine, beer, beverages and other alimentary fluids
- Industrial equipment for acid bases and salts
- Swimming pools with fresh or sea water
- Ship Installations

## Materials:

- Body and nut: polypropylene
- O-ring: nitrile
- Clenching ring: polyacetal resin
- Metal reinforcements: stainless steel

**Maximum Working Temperature:**  
+80°C

**Maximum Working Pressure:**  
16 bar, atmospheric at 20°C up to 63mm bore  
10 bar, atmospheric at 20°C from 75mm bore

**NOTE:** Materials fully conform with the international specification relating to Hygiene and Sanitary Requirements for the Transport of Potable Water and Alimentary Fluids.

## Straight Connector



### Tube x Tube

0116	OD mm
PE-701.016	16
PE-701.020	20
PE-701.025	25
PE-701.032	32
PE-701.040	40
PE-701.050	50
PE-701.063	63
PE-701.075	75
PE-701.110	110

## Reducing Coupling



### Tube x Tube

0116	OD mm	OD mm
PE-702.020	20	16
PE-702.025	25	20
PE-702.031	32	20
PE-702.032	32	25
PE-702.040	40	32
PE-702.049	50	32
PE-702.063	63	50

## End Plug



### Tube

0116	OD mm
PE-705.020	20
PE-705.025	25
PE-705.032	32
PE-705.050	50
PE-705.063	63

## Female Adaptor



### BSPT

0116	OD mm	Thread
PE-703.016	16	1/2"
PE-703.020	20	1/2"
PE-703.022	20	3/4"
PE-703.024	25	1/2"
PE-703.025	25	3/4"
PE-703.027	25	1"
PE-703.031	32	3/4"
PE-703.032	32	1"
PE-703.039	40	1"
PE-703.040	40	1.1/4"
PE-703.050	50	1.1/2"
PE-703.063	63	2"
PE-703.075	75	2.1/2"
PE-703.090	90	3"
PE-703.110	110	4"

## Male Adaptor



### BSPT

0116	OD mm	Thread
PE-704.016	16	1/2"
PE-704.020	20	1/2"
PE-704.021	20	3/4"
PE-704.024	25	1/2"
PE-704.025	25	3/4"
PE-704.026	25	1"
PE-704.031	32	3/4"
PE-704.032	32	1"
PE-704.033	32	1.1/4"
PE-704.039	40	1"
PE-704.040	40	1.1/4"
PE-704.041	40	1.1/2"
PE-704.049	50	1.1/4"
PE-704.050	50	1.1/2"
PE-704.051	50	2"
PE-704.063	63	2"
PE-704.074	75	2"
PE-704.075	75	2.1/2"
PE-704.090	90	3"

## 90° Equal Elbows



### Tube x Tube

0116	OD mm
PE-706.016	16
PE-706.020	20
PE-706.025	25
PE-706.032	32
PE-706.040	40
PE-706.050	50
PE-706.063	63
PE-706.090	90



### Male, BSPT

0116	OD mm	Thread
PE-707.020	20	1/2"
PE-707.024	25	1/2"
PE-707.025	25	3/4"
PE-707.031	32	3/4"
PE-707.032	32	1"
PE-707.050	50	1.1/2"
PE-707.063	63	2"



### Female, BSPT

0116	OD mm	Thread
PE-708.020	20	1/2"
PE-708.024	25	1/2"
PE-708.025	25	3/4"
PE-708.031	32	3/4"
PE-708.032	32	1"
PE-708.050	50	1.1/2"
PE-708.063	63	2"

## 90° Equal Tee



### Tube x Tube

0116	OD mm
PE-709.020	20
PE-709.025	25
PE-709.032	32
PE-709.040	40
PE-709.050	50
PE-709.063	63
PE-709.075	75



### Male, BSPT

0116	OD mm	Thread
PE-711.020	20	1/2"
PE-711.025	25	3/4"
PE-711.032	32	1"
PE-711.050	50	1.1/2"
PE-711.063	63	2"



### Female, BSPP

0116	OD mm	Thread
PE-710.020	20	1/2"
PE-710.024	25	1/2"
PE-710.025	25	3/4"
PE-710.031	32	3/4"
PE-710.032	32	1"
PE-710.040	40	1.1/4"
PE-710.050	50	1.1/2"
PE-710.090	90	3"

## Wall Support Bracket



### BSPP

0116	OD mm	Thread
PE-712.020	20	1/2"
PE-712.025	25	3/4"

## 90° Reducing Tee



### Branch

0116	OD mm	OD mm
PE-713.025	25	20
PE-713.032	32	25
PE-713.063	63	50

## Compression Flange

Conforms to the following standards:

UNE EN-712, UNE EN-713, UNE EN-715, UNE EN-714, ISO 351, ISO 3503, ISO 3458, ISO 3459, DIN 8076, ISO 7, ISO 228, DIN 2999, DIN 259



### Tube

0116	OD mm
PE-714.050	50
PE-714.063	63
PE-714.075	75
PE-714.090	90

## Pipe Liner



0116	To Suit Hose OD mm
PE-780020	20
PE-780025	25
PE-780032	32

## Repair Coupling



### Tube x Tube

0116	OD mm
PE-725020	20
PE-725025	25
PE-725032	32
PE-725050	50
PE-725075	75

## Spanner



0116	To Suit
PE-776001	20mm to 32mm
PE-776002	40mm to 63mm
PE-776003	20mm to 63mm
PE-776004	75mm to 110mm

## MDPE Pipes



### Blue

0116	OD mm	Length Metres
PE-MDPE20BLU	20	100
PE-MDPE25BLU	25	100
PE-MDPE32BLU	32	100
PE-MDPE63BLU	63	100



### Black

0116	OD mm	Length Metres
PE-MDPE20BLK	20	100
PE-MDPE25BLK	25	100
PE-MDPE32BLK	32	100
PE-MDPE63BLK	63	100

# POLYETHYLENE PIPE UNIVERSAL TRANSITION FITTINGS



## Universal Fittings

This Universal STP Kit is compatible with any fitting, allowing the transition between pipes of any material with diameters from 15mm to 35mm (1/2" to 1" and polyethylene pipes between 16mm to 63mm.



### Universal Fittings

0116	Inlet mm	Outlet
PE-715.020	15-22	To suit 25mm Body
PE-715.025	21-27	To suit 32mm Body
PE-715.032	27-35	To suit 40mm Body

Tech Sheet 20360

Rubber adaptor suitable for all STP fittings that allow the transition from copper (15-16 mm) to galvanised or UPVC (1/2").



### For Copper Tubing

0116
PE-000.715

## Couplings



### Tube x Tube

0116	OD A mm	OD A	OD B mm
PE-716016	15-22	1/2"	16
PE-716020	15-22	1/2"	20
PE-716025	15-22	1/2"	25
PE-716032	15-22	1/2"	32
PE-716040	15-22	1/2"	40
PE-717020	21-27	3/4"	20
PE-717025	21-27	3/4"	25
PE-717032	21-27	3/4"	32
PE-717040	21-27	3/4"	40
PE-717050	21-27	3/4"	50
PE-718025	27-35	1"	25
PE-718032	27-35	1"	32
PE-718040	27-35	1"	40
PE-718050	27-35	1"	50
PE-718063	27-35	1"	63
PE-719032	35-50	1.1/2"	32
PE-719040	35-50	1.1/2"	40
PE-719050	35-50	1.1/2"	50
PE-719063	35-50	1.1/2"	63

## Adaptors



### Male, BSPT

0116	OD mm	OD	Thread
PE-721020	15-22	1/2"	1/2"
PE-721021	15-22	1/2"	3/4"
PE-721022	15-22	1/2"	1"
PE-721025	21-27	3/4"	3/4"
PE-721026	21-27	3/4"	1"
PE-721027	21-27	3/4"	1.1/4"
PE-721032	27-35	1"	1"
PE-721033	27-35	1"	1.1/4"
PE-721034	27-35	1"	1.1/2"
PE-721040	35-50	1.1/2"	1.1/4"
PE-721041	35-50	1.1/2"	1.1/2"
PE-721042	35-50	1.1/2"	2"



### Female, BSPP

0116	OD mm	OD	Thread
PE-720020	15-22	1/2"	1/2"
PE-720021	15-22	1/2"	3/4"
PE-720022	15-22	1/2"	1"
PE-720026	21-27	3/4"	1"
PE-720032	27-35	1"	1"
PE-720033	27-35	1"	1.1/4"
PE-720041	35-50	1.1/2"	1.1/2"

## End Caps



### Tube

0116	OD mm	OD
PE-722020	15-22	1/2"
PE-722025	21-27	3/4"
PE-722032	27-35	1"
PE-722040	35-50	1.1/2"

## Elbows



### Tube x Tube

0116	OD A mm	OD A	OD B mm
PE-723020	15-22	1/2"	20
PE-723021	15-22	1/2"	25
PE-723025	21-27	3/4"	25
PE-723026	21-27	3/4"	32
PE-723033	27-35	1"	40



### Male, BSPT

0116	OD mm	OD	Thread
PE-723121	15-22	1/2"	3/4"
PE-723132	27-35	1"	1"



### Female, BSPP

0116	OD mm	OD	Thread
PE-723221	15-22	1/2"	3/4"
PE-723226	21-27	3/4"	1"
PE-723232	27-35	1"	1"
PE-723233	27-35	1"	1.1/4"

# POLYETHYLENE PIPE UNIVERSAL TRANSITION FITTINGS & VALVES



## Tees



### Tube x Tube, Universal x PP x PP

0116	OD A mm	OD A	OD B mm	OD C mm
PE-724001	15-22	1/2"	25	25
PE-724003	15-22	1/2"	25	20
PE-724005	21-27	3/4"	32	32
PE-724007	21-27	3/4"	32	25
PE-724011	27-35	1"	40	40
PE-724013	27-35	1"	40	32



### Tube x Tube, Universal x PP x Universal

0116	OD A mm	OD A	OD B mm
PE-724002	15-22	1/2"	25
PE-724004	15-22	1/2"	20
PE-724010	15-22	1/2"	32
PE-724008	21-27	3/4"	25
PE-724006	21-27	3/4"	32
PE-724016	21-27	3/4"	40
PE-724014	27-35	1"	32
PE-724012	27-35	1"	40



### Female x BSPP

0116	OD A mm	OD A	OD B mm	Thread
PE-724120	15-22	1/2"	25	1/2"
PE-724121	15-22	1/2"	25	3/4"
PE-724125	21-27	3/4"	32	3/4"
PE-724126	21-27	3/4"	32	1"
PE-724132	27-35	1"	40	1"
PE-724133	27-35	1"	40	1.1/4"



### Male x BSPT

0116	OD A mm	OD A	OD B mm	Thread
PE-724221	15-22	1/2"	25	3/4"
PE-724226	21-27	3/4"	32	1"
PE-724233	27-35	1"	40	1.1/4"

## Compression Valves



### Tube x Tube

0116	OD mm
PE-141020C	20
PE-141025C	25
PE-141032C	32
PE-141040C	40
PE-141050C	50
PE-141063C	63



### Tube x BSPT Male

0116	OD mm	Thread
PE-142020C	20	1/2"
PE-142025C	25	3/4"
PE-142032C	32	1"
PE-142040C	40	1.1/4"
PE-142050C	50	1.1/2"
PE-142063C	63	2"



### Tube x BSPP Female

0116	OD mm	Thread
PE-140020CX	20	1/2"
PE-140025CX	25	3/4"
PE-140032CX	32	1"
PE-140040CX	40	1.1/4"
PE-140050CX	50	1.1/2"
PE-140063CX	63	2"

## Universal Compression Valves



### Tube x Tube, Universal x PP

0116	OD mm	OD mm
PE-141024CU	15-22	25
PE-141031CU	15-22	32
PE-141040CU	27-35	40



### Universal x Universal

0116	OD mm	OD mm
PE-140025U	15-22	15-22
PE-140031U	21-27	15-22
PE-140040U	27-35	27-35



### Tube x BSPP Female

0116	OD mm	Thread
PE-141030UM	15-22	1"
PE-141031UM	21-27	3/4"
PE-141032UM	21-27	1"
PE-141041UM	27-35	1.1/2"



### Tube x BSPT Male

0116	OD mm	Thread
PE-142024UM	15-22	1/2"
PE-142025UM	15-22	3/4"
PE-142030UM	15-22	1"
PE-142031UM	21-27	3/4"
PE-142032UM	21-27	1"
PE-142040UM	27-35	1.1/4"
PE-142041UM	27-35	1.1/2"

# ABS IMPERIAL PIPE SYSTEM



**Working Temperature:**  
-40°C to 70°C

**Maximum Working Pressure:**  
15 bar  
(8" with reduced safety factor)

For Air Ring Mains use ABS. UPVC is not suitable for use with compressed air.

UPVC = Unplasticized Poly Vinyl Chloride  
ABS = Acrylonitrile-Butadiene-Styrene Copolymers

## Sockets & Reducing Bushes



### Equal Socket

1050	Nominal Bore ID
SO13-12-ABS	1/2"
SO13-34-ABS	3/4"
SO13-1-ABS	1"
SO13-114-ABS	1.1/4"
SO13-112-ABS	1.1/2"
SO13-2-ABS	2"
SO13-212-ABS	2.1/2"
SO13-3-ABS	3"
SO13-4-ABS	4"

Tech Sheet 10255



### Plain x Threaded Male, BSPT

1050	Nominal Bore ID	Nominal Bore ID
RS13-3412-ABS	3/4"	1/2"
RS13-134-ABS	1"	3/4"
RS13-1141-ABS	1.1/4"	1"
RS13-112114-ABS	1.1/2"	1.1/4"
RS13-2112-ABS	2"	1.1/2"
RS13-3212-ABS	3"	2.1/2"
RS13-43-ABS	4"	3"

Tech Sheet 10255



### Reducing Bush

1050	Nominal Bore ID	Nominal Bore ID
RB93-3412-ABS	3/4"	1/2"
RB93-112-ABS	1"	1/2"
RB93-134-ABS	1"	3/4"
RB93-11412-ABS	1.1/4"	1/2"
RB93-11434-ABS	1.1/4"	3/4"
RB93-1141-ABS	1.1/4"	1"
RB93-11234-ABS	1.1/2"	3/4"
RB93-1121-ABS	1.1/2"	1"
RB93-112114-ABS	1.1/2"	1.1/4"
RB93-21-ABS	2"	1"
RB93-2114-ABS	2"	1.1/4"
RB93-2112-ABS	2"	1.1/2"
RB93-2122-ABS	2.1/2"	2"
RB93-3112-ABS	3"	1.1/2"
RB93-32-ABS	3"	2"
RB93-3212-ABS	3"	2.1/2"
RB93-42-ABS	4"	2"
RB93-4212-ABS	4"	2.1/2"
RB93-43-ABS	4"	3"
RB93-54-ABS	5"	4"

Tech Sheet 10255

## Elbows & Bends



### Equal 90° Elbow

1050	Nominal Bore ID
EL53-12-ABS	1/2"
EL53-34-ABS	3/4"
EL53-1-ABS	1"
EL53-114-ABS	1.1/4"
EL53-112-ABS	1.1/2"
EL53-2-ABS	2"
EL53-212-ABS	2.1/2"
EL53-3-ABS	3"
EL53-4-ABS	4"
EL53-5-ABS	5"
EL53-6-ABS	6"

Tech Sheet 10255



### Equal 90° Bend, Short Radius

1050	Nominal Bore ID
BE33-12-ABS	1/2"
BE33-34-ABS	3/4"
BE33-1-ABS	1"
BE33-114-ABS	1.1/4"
BE33-112-ABS	1.1/2"
BE33-2-ABS	2"
BE33-212-ABS	2.1/2"
BE33-3-ABS	3"
BE33-4-ABS	4"

Tech Sheet 10255



### Equal 45° Elbow

1050	Nominal Bore ID
EY53-12-ABS	1/2"
EY53-34-ABS	3/4"
EY53-1-ABS	1"
EY53-114-ABS	1.1/4"
EY53-112-ABS	1.1/2"
EY53-2-ABS	2"
EY53-212-ABS	2.1/2"
EY53-3-ABS	3"
EY53-4-ABS	4"
EY53-6-ABS	6"

Tech Sheet 10255

## Equal Barrel Nipples



### Male, BSPT

1050	Thread
BN11-12-ABS	1/2"
BN11-34-ABS	3/4"
BN11-1-ABS	1"
BN11-114-ABS	1.1/4"
BN11-112-ABS	1.1/2"
BN11-2-ABS	2"
BN11-212-ABS	2.1/2"
BN11-3-ABS	3"
BN11-4-ABS	4"

Tech Sheet 10255



### Stem Nipple, BSPT

1050	Thread	Nominal Bore ID	Length mm
BN12-12-ABS	1/2"	1/2"	50
BN12-34-ABS	3/4"	3/4"	56
BN12-1-ABS	1"	1"	63
BN12-114-ABS	1.1/4"	1.1/4"	75
BN12-112-ABS	1.1/2"	1.1/2"	88
BN12-2-ABS	2"	2"	88
BN12-212-ABS	2.1/2"	2.1/2"	106
BN12-3-ABS	3"	3"	128
BN12-4-ABS	4"	4"	153

Tech Sheet 10255

## Tees



### 45° Tee

1050	Nominal Bore ID
TY43-12-ABS	1/2"
TY43-34-ABS	3/4"
TY43-1-ABS	1"
TY43-114-ABS	1.1/4"
TY43-2-ABS	2"

Tech Sheet 10255



### Equal Tee

1050	Nominal Bore ID
TE43-12-ABS	1/2"
TE43-34-ABS	3/4"
TE43-1-ABS	1"
TE43-112-ABS	1.1/2"
TE43-114-ABS	1.1/4"
TE43-2-ABS	2"
TE43-212-ABS	2.1/2"
TE43-3-ABS	3"
TE43-4-ABS	4"
TE43-5-ABS	5"
TE43-6-ABS	6"

Tech Sheet 10255

# ABS IMPERIAL PIPE SYSTEM



**Working Temperature:**  
0°C to 60°C



**Maximum Working Pressure:**  
15 bar  
(8" with reduced safety factor)

For Air Ring Mains use ABS. UPVC is not suitable for use with compressed air.

**UPVC** = Unplasticized Poly Vinyl Chloride  
**ABS** = Acrylonitrile-Butadiene-Styrene Copolymers

## Crosses



### Equal Cross

1050	Nominal Bore ID
CR33-12-ABS	1/2"
CR33-34-ABS	3/4"
CR33-1-ABS	1"
CR33-2-ABS	2"

Tech Sheet 10255

## Caps



### Plain

1050	Nominal Bore ID
CA73-12-ABS	1/2"
CA73-34-ABS	3/4"
CA73-1-ABS	1"
CA73-114-ABS	1.1/4"
CA73-112-ABS	1.1/2"
CA73-2-ABS	2"
CA73-212-ABS	2.1/2"
CA73-3-ABS	3"
CA73-4-ABS	4"

Tech Sheet 10255

## Unions



### Equal Union

1050	Nominal Bore ID
UN83-12-ABS	1/2"
UN83-34-ABS	3/4"
UN83-1-ABS	1"
UN83-114-ABS	1.1/4"
UN83-112-ABS	1.1/2"
UN83-2-ABS	2"
UN83-212-ABS	2.1/2"
UN83-3-ABS	3"
UN83-4-ABS	4"

Tech Sheet 10255

## Tank Connectors



### Plain x Female, BSPP

1050	Nominal Bore ID	Thread
TC93-12-ABS	1/2"	1/2"
TC93-34-ABS	3/4"	3/4"
TC93-1-ABS	1"	1"
TC93-114-ABS	1.1/4"	1.1/4"
TC93-112-ABS	1.1/2"	1.1/2"
TC93-2-ABS	2"	2"
TC93-212-ABS	2.1/2"	2.1/2"
TC93-3-ABS	3"	3"
TC93-4-ABS	4"	4"

Tech Sheet 10255

## Threaded Sockets & Adaptors



### Plain x Threaded Female Socket, BSPP

1050	Nominal Bore ID	Thread
PTS-12-ABS	1/2"	1/2"
PTS-1-ABS	1"	1"
PTS-112-ABS	1.1/2"	1.1/2"
PTS-2-ABS	2"	2"
PTS-212-ABS	2.1/2"	2.1/2"
PTS-3-ABS	3"	3"
PTS-4-ABS	4"	4"

### Plain x Threaded Male Adaptor, BSPP

1050	Nominal Bore ID	Spigot	BSPP Male
MFA1-34-ABS	3/4"	1"	3/4"
MFA1-1-ABS	1"	1.1/4"	1"
MFA1-112-ABS	1.1/2"	2"	1.1/2"
MFA1-2-ABS	2"	2.1/2"	2"

### Plain x Threaded Female Adaptor, BSPP

1050	Nominal Bore ID	Thread
MFA2-12-ABS	1/2"	1/2"
MFA2-34-ABS	3/4"	3/4"
MFA2-1-ABS	1"	1"
MFA2-2-ABS	2"	2"
MFA2-3-ABS	3"	3"

## Hose Connections



### Male, BSPP x Hose Tail

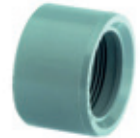
1050	Thread	Hose ID mm
MHA-34-ABS	3/4"	25



### Female, BSPP x Hose Tail

1050	Thread	Hose ID mm
FHA-1-ABS	1"	20

## Reducing Bushes



### Plain x Threaded Female, BSPP

1050	Nominal Bore ID	Female BSPP
FRB-12-ABS	1/2"	3/8"
FRB-34-ABS	3/4"	1/2"

## Unions



### Plain x Brass Composite Male Threaded Union, BSPP

1050	Nominal Bore ID	Thread
MBU-1-ABS	1"	1"
MBU-112-ABS	1.1/2"	1.1/2"



### Plain x Brass Composite Female Threaded Union, BSPP

1050	Nominal Bore ID	Thread
FBU-12-ABS	1/2"	1/2"
FBU-34-ABS	3/4"	3/4"
FBU-1-ABS	1"	1"
FBU-114-ABS	1.1/4"	1.1/4"
FBU-112-ABS	1.1/2"	1.1/2"
FBU-2-ABS	2"	2"

# ABS IMPERIAL PIPE SYSTEM



**Working Temperature:**  
0°C to 60°C

**Maximum Working Pressure:**  
15 bar  
(8" with reduced safety factor)

For Air Ring Mains use ABS. UPVC is not suitable for use with compressed air.

**UPVC** = Unplasticized Poly Vinyl Chloride  
**ABS** = Acrylonitrile-Butadiene-Styrene Copolymers

## Flanges



### Stub Flange, Serrated Face

1050	Nominal Bore
ST23-34-ABS	3/4"
ST23-1-ABS	1"
ST23-112-ABS	1.1/2"
ST23-2-ABS	2"
ST23-212-ABS	2.1/2"
ST23-3-ABS	3"
ST23-4-ABS	4"
ST23-5-ABS	5"
ST23-6-ABS	6"

Tech Sheet 10255



### BS4504, PN16 Flange Gasket

1050	Size
SF16-12	1/2"
SF16-34	3/4"
SF16-1	1"
SF16-114	1.1/4"
SF16-112	1.1/2"
SF16-2	2"
SF16-3	3"
SF16-4	4"
SF16-6	6"

Tech Sheet 10255



### PN16 Galvanised Backing Ring

1050	Size
GB16-12	1/2"
GB16-34	3/4"
GB16-1	1"
GB16-114	1.1/4"
GB16-112	1.1/2"
GB16-2	2"
GB16-212	2.1/2"
GB16-3	3"
GB16-4	4"
GB16-5	5"
GB16-6	6"

Tech Sheet 10255



### Full Face Table E

1050	Nominal Bore
FF30-12-ABS	1/2"
FF30-34-ABS	3/4"
FF30-1-ABS	1"
FF30-114-ABS	1.1/4"
FF30-112-ABS	1.1/2"
FF30-2-ABS	2"
FF30-3-ABS	3"
FF30-4-ABS	4"

Tech Sheet 10255



### BS10, Table E Flange Gasket

1050	Size
SF10-12	1/2"
SF10-34	3/4"
SF10-1	1"
SF10-114	1.1/4"
SF10-112	1.1/2"
SF10-2	2"
SF10-212	2.1/2"
SF10-3	3"
SF10-4	4"
SF10-6	6"

Tech Sheet 10255



### Stub Flange Gasket, EPDM

1050	Size
SG50-1-ABS	1"
SG50-114-ABS	1.1/4"
SG50-112-ABS	1.1/2"
SG50-2-ABS	2"
SG50-212-ABS	2.1/2"
SG50-3-ABS	3"
SG50-4-ABS	4"
SG50-5-ABS	5"

Tech Sheet 10255



### ABS Plain Full Face Flange NP10/16

1050	Tube NB
FF31-2-ABS	2"



### ABS Blank Flange NP10/16

1050	Tube NB
BF10-212-ABS	2.1/2"

### Tube O.D. - Size Conversion Table

Nominal Bore	Outside Diameter
3/8"	17.1mm
1/2"	21.3mm
3/4"	26.7mm
1"	33.4mm
1.1/4"	42.2mm
1.1/2"	48.3mm
2"	60.3mm
2.1/2"	75mm
3"	88.9mm
4"	114.3mm
5"	140mm
6"	168.3mm
8"	219.1mm

# ABS IMPERIAL PIPE SYSTEM



**Working Temperature:**  
0°C to 60°C



**Maximum Working Pressure:**  
15 bar  
(8" with reduced safety factor)

For Air Ring Mains use ABS. UPVC is not suitable for use with compressed air.

**UPVC** = Unplasticized Poly Vinyl Chloride  
**ABS** = Acrylonitrile-Butadiene-Styrene Copolymers

## Valves



### Industrial Double Union Ball Valve, EPDM Seals

0118	Nominal Bore ID
BVI13-12-ABS	1/2"
BVI13-34-ABS	3/4"
BVI13-1-ABS	1"
BVI13-114-ABS	1.1/4"
BVI13-112-ABS	1.1/2"
BVI13-2-ABS	2"
BVI13-212-ABS	2.1/2"
BVI13-3-ABS	3"
BVI13-4-ABS	4"

Tech Sheet 10255



### Standard Double Union Ball Valve, EPDM Seals

1050	Tube NB
BVDUS-12	1/2"
BVDUS-1	1"
BVDUS-112	1.1/2"
BVDUS-2	2"
BVDUS-212	2.1/2"



### Industrial Check Valve, EPDM Seals

0118	Nominal Bore ID
CVD13-12-ABS	1/2"
CVD13-34-ABS	3/4"
CVD13-1-ABS	1"
CVD13-114-ABS	1.1/4"
CVD13-112-ABS	1.1/2"
CVD13-2-ABS	2"

Tech Sheet 10255

## Solvent Cement



### ABS

1050	Millilitres
ABS	500

Tech Sheet 875

## Cleaning Fluid



### 500ml

1050	Millilitres
MEK-TIN	500

Tech Sheet 877



**For Pipe Clips & Fixing Systems**  
...see pages 1549-1557

## ABS Tubing

**Note:** 6 metre length tube is available on a 3 to 5 working day delivery service. Specified delivery dates and times can not be guaranteed. Carriage is charged as an extra based on weight and delivery service required. Please speak to our sales department for further details. Delivery of 2.9 metre lengths may take up to 48 hours.



### Class C, 9 bar, 2.9 Metre Lengths

0118	Nominal Bore
ABS/CTUBE-3-1	1"
ABS/CTUBE-3-114	1.1/4"
ABS/CTUBE-3-112	1.1/2"
ABS/CTUBE-3-2	2"
ABS/CTUBE-3-212	2.1/2"
ABS/CTUBE-3-3	3"
ABS/CTUBE-3-4	4"
ABS/CTUBE-3-6	6"
ABS/CTUBE-3-8	8"

Tech Sheet 10255

### Class C, 9 bar, 5.8 Metre Lengths

0118	Nominal Bore
ABS/CTUBE-6-1	1"
ABS/CTUBE-6-114	1.1/4"
ABS/CTUBE-6-112	1.1/2"
ABS/CTUBE-6-2	2"
ABS/CTUBE-6-212	2.1/2"
ABS/CTUBE-6-3	3"
ABS/CTUBE-6-4	4"

Tech Sheet 10255

### Class E, 15 bar, 2.9 Metre Lengths

0118	Nominal Bore
ABS/ETUBE-3-12	1/2"
ABS/ETUBE-3-34	3/4"
ABS/ETUBE-3-1	1"
ABS/ETUBE-3-114	1.1/4"
ABS/ETUBE-3-112	1.1/2"
ABS/ETUBE-3-2	2"
ABS/ETUBE-3-3	3"
ABS/ETUBE-3-4	4"

Tech Sheet 10255

### Class E, 15 bar, 5.8 Metre Lengths

0118	Nominal Bore
ABS/ETUBE-6-12	1/2"
ABS/ETUBE-6-34	3/4"
ABS/ETUBE-6-1	1"
ABS/ETUBE-6-114	1.1/4"
ABS/ETUBE-6-112	1.1/2"
ABS/ETUBE-6-2	2"
ABS/ETUBE-6-3	3"

Tech Sheet 10255



# UPVC METRIC PIPE SYSTEM



UPVC (Unplasticised Polyvinyl Chloride) is a **low maintenance material** selected for use across various industries due to its **high tensile strength** and durability. The outstanding feature of this product is its **excellent chemical resistance** which makes it suitable for a wide range of acids, alkalis and chemicals.

**Working Temperature:**  
 All pressures quoted are based on a working temperature of 20°C  
**PVC-U Systems** should never be used for temperatures in excess of 60°C

**Maximum Working Pressure:**  
 16 bar Plain Fittings  
 12 bar Threaded Fittings  
 (Sizes 200mm/225mm with reduced safety factor)

20°C	30°C	40°C	50°C	60°C
16.0 bar	12.8 bar	9.2 bar	6.2 bar	3.5 bar

## Sockets & Reducing Bushes



### Equal Socket

1050	ID mm
SO-16-UPVC	16
SO-20-UPVC	20
SO-25-UPVC	25
SO-32-UPVC	32
SO-40-UPVC	40
SO-50-UPVC	50
SO-63-UPVC	63
SO-75-UPVC	75
SO-90-UPVC	90
SO-110-UPVC	110
SO-125-UPVC	125
SO-160-UPVC	160
SO-200-UPVC	200
SO-225-UPVC	225

Tech Sheet 10256



### Reducing Socket

1050	ID mm	ID mm
RSO-2016-UPVC	20	16
RSO-2516-UPVC	25	16
RSO-2520-UPVC	25	20
RSO-3220-UPVC	32	20
RSO-3225-UPVC	32	25
RSO-4020-UPVC	40	20
RSO-4025-UPVC	40	25
RSO-4032-UPVC	40	32
RSO-5025-UPVC	50	25
RSO-5032-UPVC	50	32
RSO-5040-UPVC	50	40
RSO-6340-UPVC	63	40
RSO-6350-UPVC	63	50
RSO-7540-UPVC	75	40
RSO-7550-UPVC	75	50
RSO-7563-UPVC	75	63
RSO-9040-UPVC	90	40
RSO-9050-UPVC	90	50
RSO-9063-UPVC	90	63
RSO-9075-UPVC	90	75
RSO-11050-UPVC	110	50
RSO-11063-UPVC	110	63
RSO-11075-UPVC	110	75
RSO-11090-UPVC	110	90
RSO-12590-UPVC	125	90
RSO-125110-UPVC	125	110
RSO-14090-UPVC	140	90
RSO-140110-UPVC	140	110
RSO-140125-UPVC	140	125
RSO-160110-UPVC	160	110
RSO-160140-UPVC	160	140

Tech Sheet 10256



### Reducing Bush

1050	OD mm	ID mm
RB-2016-UPVC	20	16
RB-2516-UPVC	25	16
RB-2520-UPVC	25	20
RB-3216-UPVC	32	16
RB-3220-UPVC	32	20
RB-3225-UPVC	32	25
RB-4020-UPVC	40	20
RB-4025-UPVC	40	25
RB-4032-UPVC	40	32
RB-5025-UPVC	50	25
RB-5032-UPVC	50	32
RB-5040-UPVC	50	40
RB-6325-UPVC	63	25
RB-6332-UPVC	63	32
RB-6340-UPVC	63	40
RB-6350-UPVC	63	50
RB-7532-UPVC	75	32
RB-7540-UPVC	75	40
RB-7550-UPVC	75	50
RB-7563-UPVC	75	63
RB-9050-UPVC	90	50
RB-9063-UPVC	90	63
RB-9075-UPVC	90	75
RB-11063-UPVC	110	63
RB-11075-UPVC	110	75
RB-11090-UPVC	110	90
RB-12575-UPVC	125	75
RB-12590-UPVC	125	90
RB-125110-UPVC	125	110
RB-14090-UPVC	140	90
RB-140110-UPVC	140	110
RB-140125-UPVC	140	125
RB-160110-UPVC	160	110
RB-160125-UPVC	160	125
RB-160140-UPVC	160	140
RB-180125-UPVC	180	125
RB-180140-UPVC	180	140
RB-180160-UPVC	180	160
RB-200160-UPVC	200	160
RB-200180-UPVC	200	180
RB-225160-UPVC	225	160
RB-225200-UPVC	225	200

Tech Sheet 10256



### Plain x Threaded Socket, BSPP

1050	ID mm	Thread
TSO-16-38-UPVC	16	3/8"
TSO-20-12-UPVC	20	1/2"
TSO-25-34-UPVC	25	3/4"
TSO-32-1-UPVC	32	1"
TSO-40-114-UPVC	40	1.1/4"
TSO-50-112-UPVC	50	1.1/2"
TSO-63-2-UPVC	63	2"
TSO-75-212-UPVC	75	2.1/2"
TSO-90-3-UPVC	90	3"
TSO-110-4-UPVC	110	4"
TSO-125-5-UPVC	125	5"

Tech Sheet 10256

# UPVC METRIC PIPE SYSTEM


**Working Temperature:**

All pressures quoted are based on a working temperature of 20°C

PVC-U Systems should never be used for temperatures in excess of 60°C


**Maximum Working Pressure:**

16 bar Plain Fittings

12 bar Threaded Fittings

(Sizes 200mm/225mm with reduced safety factor)

20°C	30°C	40°C	50°C	60°C
16.0 bar	12.8 bar	9.2 bar	6.2 bar	3.5 bar

## Elbows & Bends



### Equal 90° Elbow

1050	ID mm
EE-90-16-UPVC	16
EE-90-20-UPVC	20
EE-90-25-UPVC	25
EE-90-32-UPVC	32
EE-90-40-UPVC	40
EE-90-50-UPVC	50
EE-90-63-UPVC	63
EE-90-75-UPVC	75
EE-90-90-UPVC	90
EE-90-110-UPVC	110
EE-90-125-UPVC	125
EE-90-140-UPVC	140
EE-90-160-UPVC	160
EE-90-200-UPVC	200
EE-90-225-UPVC	225

Tech Sheet 10256



### Equal 45° Elbow

1050	ID mm
EE-45-16-UPVC	16
EE-45-25-UPVC	25
EE-45-32-UPVC	32
EE-45-40-UPVC	40
EE-45-50-UPVC	50
EE-45-63-UPVC	63
EE-45-75-UPVC	75
EE-45-90-UPVC	90
EE-45-110-UPVC	110
EE-45-125-UPVC	125
EE-45-140-UPVC	140
EE-45-200-UPVC	200
EE-45-225-UPVC	225

Tech Sheet 10256



### Equal 90° Bend, Short Radius

1050	ID mm
EB-90-20-UPVC	20
EB-90-25-UPVC	25
EB-90-32-UPVC	32
EB-90-40-UPVC	40
EB-90-50-UPVC	50
EB-90-63-UPVC	63
EB-90-75-UPVC	75
EB-90-110-UPVC	110

Tech Sheet 10256



### Equal 45° Bend, Short Radius

1050	ID mm
EB-45-32-UPVC	32
EB-45-40-UPVC	40
EB-45-63-UPVC	63
EB-45-75-UPVC	75
EB-45-90-UPVC	90

Tech Sheet 10256



### Plain x Threaded 90° Elbow, BSPP

1050	ID mm	Thread
TE-90-16-UPVC	16	3/8"
TE-90-20-UPVC	20	1/2"
TE-90-25-UPVC	25	3/4"
TE-90-32-UPVC	32	1"
TE-90-40-UPVC	40	1.1/4"
TE-90-50-UPVC	50	1.1/2"
TE-90-63-UPVC	63	2"
TE-90-75-UPVC	75	2.1/2"

Tech Sheet 10256



### Plain x Threaded 45° Elbow, BSPP

1050	ID mm	Thread
TE-45-16-UPVC	16	3/8"
TE-45-20-UPVC	20	1/2"
TE-45-25-UPVC	25	3/4"
TE-45-32-UPVC	32	1"
TE-45-40-UPVC	40	1.1/4"
TE-45-50-UPVC	50	1.1/2"
TE-45-63-UPVC	63	2"
TE-45-75-UPVC	75	2.1/2"
TE-45-110-UPVC	110	4"

Tech Sheet 10256

# UPVC METRIC PIPE SYSTEM



**Working Temperature:**  
 All pressures quoted are based on a working temperature of 20°C  
**PVC-U Systems** should never be used for temperatures in excess of 60°C

**Maximum Working Pressure:**  
 16 bar Plain Fittings  
 12 bar Threaded Fittings  
 (Sizes 200mm/225mm with reduced safety factor)

20°C	30°C	40°C	50°C	60°C
16.0 bar	12.8 bar	9.2 bar	6.2 bar	3.5 bar

## Tees



### Equal Tee

1050	ID mm
T-16-UPVC	16
T-20-UPVC	20
T-25-UPVC	25
T-32-UPVC	32
T-40-UPVC	40
T-50-UPVC	50
T-63-UPVC	63
T-75-UPVC	75
T-90-UPVC	90
T-110-UPVC	110
T-125-UPVC	125
T-140-UPVC	140
T-160-UPVC	160
T-200-UPVC	200
T-225-UPVC	225

Tech Sheet 10256



### Equal 45° Tee

1050	ID mm
TY-16-UPVC	16
TY-20-UPVC	20
TY-25-UPVC	25
TY-32-UPVC	32
TY-40-UPVC	40
TY-50-UPVC	50
TY-63-UPVC	63

Tech Sheet 10256



### Reducing Branch Tee

1050	ID mm	ID mm
TR-2016-UPVC	20	16
TR-2516-UPVC	25	16
TR-2520-UPVC	25	20
TR-3216-UPVC	32	16
TR-3220-UPVC	32	20
TR-3225-UPVC	32	25
TR-4016-UPVC	40	16
TR-4025-UPVC	40	25
TR-5020-UPVC	50	20
TR-5025-UPVC	50	25
TR-5032-UPVC	50	32
TR-5040-UPVC	50	40
TR-6325-UPVC	63	25
TR-6332-UPVC	63	32
TR-6340-UPVC	63	40
TR-6350-UPVC	63	50
TR-7532-UPVC	75	32
TR-7540-UPVC	75	40
TR-7550-UPVC	75	50
TR-7563-UPVC	75	63
TR-9040-UPVC	90	40
TR-9050-UPVC	90	50
TR-9063-UPVC	90	63
TR-9075-UPVC	90	75
TR-11050-UPVC	110	50
TR-11075-UPVC	110	75
TR-11090-UPVC	110	90
TR-12563-UPVC	125	63
TR-12575-UPVC	125	75
TR-12590-UPVC	125	90
TR-125110-UPVC	125	110
TR-14075-UPVC	140	75
TR-14090-UPVC	140	90
TR-140110-UPVC	140	110
TR-140125-UPVC	140	125
TR-16090-UPVC	160	90
TR-160110-UPVC	160	110
TR-160125-UPVC	160	125
TR-160140-UPVC	160	140

Tech Sheet 10256

## Crosses



### Equal Cross

1050	ID mm
X-16-UPVC	16
X-20-UPVC	20
X-25-UPVC	25
X-32-UPVC	32
X-40-UPVC	40
X-50-UPVC	50
X-75-UPVC	75
X-90-UPVC	90
X-110-UPVC	110

Tech Sheet 10256

## Caps



### Plain

1050	ID mm
BC-16-UPVC	16
BC-20-UPVC	20
BC-25-UPVC	25
BC-32-UPVC	32
BC-40-UPVC	40
BC-50-UPVC	50
BC-63-UPVC	63
BC-75-UPVC	75
BC-90-UPVC	90
BC-110-UPVC	110
BC-125-UPVC	125
BC-140-UPVC	140
BC-160-UPVC	160
BC-200-UPVC	200
BC-225-UPVC	225

Tech Sheet 10256

# UPVC METRIC PIPE SYSTEM



## Working Temperature:

All Pressures quoted are based on a working temperature of 20°C

**PVC-U Systems** should never be used for temperatures in excess of 60°C



## Maximum Working Pressure:

16 bar Plain Fittings  
12 bar Threaded Fittings  
(excluding 75mm-110mm Unions, which are 10 bar rated)

20°C	30°C	40°C	50°C	60°C
16.0 bar	12.8 bar	9.2 bar	6.2 bar	3.5 bar

## Unions



### Equal Union

1050	ID mm
U-16-UPVC	16
U-20-UPVC	20
U-25-UPVC	25
U-32-UPVC	32
U-40-UPVC	40
U-50-UPVC	50
U-63-UPVC	63
U-75-UPVC	75
U-90-UPVC	90
U-110-UPVC	110

Tech Sheet 10256



### Plain x Threaded Union, BSPP

1050	ID mm	Thread
UT-16-UPVC	16	3/8"
UT-20-UPVC	20	1/2"
UT-25-UPVC	25	3/4"
UT-32-UPVC	32	1"
UT-40-UPVC	40	1.1/4"
UT-50-UPVC	50	1.1/2"
UT-63-UPVC	63	2"
UT-75-UPVC	75	2.1/2"
UT-90-UPVC	90	3"
UT-110-UPVC	110	4"

Tech Sheet 10256

## Threaded Adaptors



### Plain x Male Threaded Adaptor, BSPP

1050	ID mm	OD mm	Thread
MTA-12-38-UPVC	12	16	3/8"
MTA-16-12-UPVC	16	20	1/2"
MTA-16-38-UPVC	16	20	3/8"
MTA-20-12-UPVC	20	25	1/2"
MTA-20-34-UPVC	20	25	3/4"
MTA-20-38-UPVC	20	25	3/8"
MTA-25-1-UPVC	25	32	1"
MTA-25-12-UPVC	25	32	1/2"
MTA-25-34-UPVC	25	32	3/4"
MTA-32-1-UPVC	32	40	1"
MTA-32-114-UPVC	32	40	1.1/4"
MTA-32-34UPVC	32	40	3/4"
MTA-40-1-UPVC	40	50	1"
MTA-40-112-UPVC	40	50	1.1/2"
MTA-40-114-UPVC	40	50	1.1/4"
MTA-50-112-UPVC	50	63	1.1/2"
MTA-50-114-UPVC	50	63	1.1/4"
MTA-50-2-UPVC	50	63	2"
MTA-63-112-UPVC	63	75	1.1/2"
MTA-63-2-UPVC	63	75	2"
MTA-63-212-UPVC	63	75	2.1/2"
MTA-75-2-UPVC	75	90	2"
MTA-75-212-UPVC	75	90	2.1/2"
MTA-75-3-UPVC	75	90	3"
MTA-90-212-UPVC	90	110	2.1/2"
MTA-90-3-UPVC	90	110	3"
MTA-90-4-UPVC	90	110	4"
MTA-110-3-UPVC	110	125	3"
MTA-110-4-UPVC	110	125	4"
MTA-110-5-UPVC	110	125	5"

Tech Sheet 10256



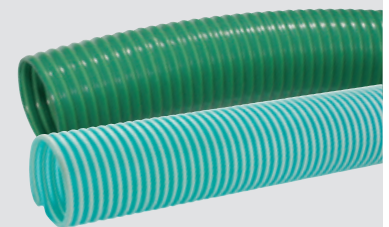
### Plain x Female Threaded Adaptor, BSPP

1050	OD mm	Thread
FTA-16-38-UPVC	16	3/8"
FTA-16-12-UPVC	16	1/2"
FTA-20-12-UPVC	20	1/2"
FTA-20-34-UPVC	20	3/4"
FTA-25-1-UPVC	25	1"
FTA-25-12-UPVC	25	1/2"
FTA-25-34-UPVC	25	3/4"
FTA-32-1-UPVC	32	1"
FTA-32-34-UPVC	32	3/4"
FTA-40-1-UPVC	40	1"
FTA-40-114-UPVC	40	1.1/4"
FTA-50-112-UPVC	50	1.1/2"
FTA-50-114-UPVC	50	1.1/4"
FTA-50-2-UPVC	50	2"
FTA-63-112-UPVC	63	1.1/2"
FTA-63-2-UPVC	63	2"
FTA-75-2-UPVC	75	2"
FTA-75-212-UPVC	75	2.1/2"
FTA-90-212-UPVC	90	2.1/2"
FTA-90-3-UPVC	90	3"
FTA-90-4-UPVC	90	4"
FTA-110-3-UPVC	110	3"
FTA-110-4-UPVC	110	4"

Tech Sheet 10256



Customers who bought from this page also purchased **Suction Hose** see pages **1427-1431**



# UPVC METRIC PIPE SYSTEM



**Working Temperature:**  
All pressures quoted are based on

a working temperature of 20°C  
**PVC-U Systems** should never be used for temperatures in excess of 60°C



**Maximum Working Pressure:**  
16 bar Plain fitting  
12 bar Threaded fitting

## Flanges



### Stub Flange, Serrated Face

1050	ID mm
SF-20-UPVC	20
SF-25-UPVC	25
SF-32-UPVC	32
SF-40-UPVC	40
SF-50-UPVC	50
SF-63-UPVC	63
SF-75-UPVC	75
SF-90-UPVC	90
SF-110-UPVC	110

Tech Sheet 10256



### PN16 Full Face Flange

1050	ID mm	Flange Size
FPN16-20-UPVC	20	1/2"
FPN16-25-UPVC	25	3/4"
FPN16-32-UPVC	32	1"
FPN16-40-UPVC	40	1.1/4"
FPN16-50-UPVC	50	1.1/2"
FPN16-63-UPVC	63	2"
FPN16-75-UPVC	75	2.1/2"
FPN16-90-UPVC	90	3"
FPN16-110-UPVC	110	4"

Tech Sheet 10256

### ASA150 Full Face Flange

1050	ID mm	Flange Size
FASA150-25-UPVC	25	3/4"
FASA150-32-UPVC	32	1"
FASA150-40-UPVC	40	1.1/4"
FASA150-50-UPVC	50	1.1/2"
FASA150-63-UPVC	63	2"
FASA150-90-UPVC	90	3"
FASA150-110-UPVC	110	4"

Tech Sheet 10256



### PN16 Blanking Flange

1050	To Suit mm	Flange Size
BPN16-20-UPVC	20	1/2"
BPN16-25-UPVC	25	3/4"
BPN16-32-UPVC	32	1"
BPN16-40-UPVC	40	1.1/4"
BPN16-50-UPVC	50	1.1/2"
BPN16-63-UPVC	63	2"
BPN16-75-UPVC	75	2.1/2"
BPN16-110-UPVC	110	4"

Tech Sheet 10256

### ASA150 Blanking Flange

1050	To Suit mm	Flange Size
BASA150-32-UPVC	32	1"
BASA150-40-UPVC	40	1.1/4"
BASA150-50-UPVC	50	1.1/2"
BASA150-63-UPVC	63	2"
BASA150-75-UPVC	75	2.1/2"
BASA150-90-UPVC	90	3"
BASA150-110-UPVC	110	4"

Tech Sheet 10256



### PN16 Flange Gasket, EPDM

1050	To Suit mm
PNFG-20	20
PNFG-25	25
PNFG-32	32
PNFG-40	40
PNFG-50	50
PNFG-63	63
PNFG-75	75
PNFG-90	90
PNFG-110	110

Tech Sheet 10256

### ASA150 Flange Gasket, EPDM

1050	To Suit mm
ASAFG-20	20
ASAFG-25	25
ASAFG-32	32
ASAFG-50	50
ASAFG-63	63
ASAFG-75	75
ASAFG-90	90

Tech Sheet 10256



### PN16 Galvanised Backing Ring

1050	To Suit mm
GBR-25	25
GBR-32	32
GBR-40	40
GBR-50	50
GBR-63	63
GBR-75	75
GBR-90	90
GBR-110	110

Tech Sheet 10256



### PN16 UPVC Backing Ring

1050	To Suit mm
UPVCBR-20	20
UPVCBR-25	25
UPVCBR-32	32
UPVCBR-40	40
UPVCBR-50	50
UPVCBR-63	63
UPVCBR-110	110

Tech Sheet 10256



### Stub Flange Gasket, EPDM

1050	To Suit mm
SFG-20	20
SFG-32	32
SFG-40	40
SFG-50	50
SFG-63	63
SFG-75	75
SFG-90	90
SFG-110	110

Tech Sheet 10256

# UPVC METRIC PIPE SYSTEM



## Industrial Valves



### Working Temperature:

All pressures quoted are based on a working temperature of 20°C

### PVC-U Systems

should never be used for temperatures in excess of 60°C



### Maximum Working Pressure:

16 bar Plain ends  
12 bar Threaded ends up to 63mm.  
10 bar 75mm-110mm



### Double Union Ball Valve, EPDM Seals

1050	ID mm
DUBV-16-UPVC	16
DUBV-20-UPVC	20
DUBV-25-UPVC	25
DUBV-32-UPVC	32
DUBV-40-UPVC	40
DUBV-50-UPVC	50
DUBV-63-UPVC	63
DUBV-75-UPVC	75
DUBV-90-UPVC	90
DUBV-110-UPVC	110

Tech Sheet 10256



### Double Union Spring Check Valve, EPDM Seals

1050	ID mm
DUCV-20-UPVC	20
DUCV-25-UPVC	25
DUCV-32-UPVC	32
DUCV-40-UPVC	40
DUCV-50-UPVC	50
DUCV-63-UPVC	63
DUCV-75-UPVC	75
DUCV-90-UPVC	90
DUCV-110-UPVC	110

Tech Sheet 10256



### Double Union Foot Valve, EPDM Seals

1050	ID mm
DUFV-20-UPVC	20
DUFV-25-UPVC	25
DUFV-40-UPVC	40
DUFV-50-UPVC	50
DUFV-63-UPVC	63
DUFV-75-UPVC	75
DUFV-90-UPVC	90
DUFV-110-UPVC	110

Tech Sheet 10256

## UPVC Tubing



### Working Temperature:

All pressures quoted are based on a working temperature of 20°C

**PVC-U Systems** should never be used for temperatures in excess of 60°C



### Maximum Working Pressure:

16 bar

4 Metre lengths may take up to 3 working days to be delivered, dependant on weight and delivery address location. Additional carriage charges may apply. For full details please contact sales.



### PN16, 6 Metre Lengths

0118	OD mm
UPVC/TUBE-6-16	16
UPVC/TUBE-6-20	20
UPVC/TUBE-6-25	25
UPVC/TUBE-6-32	32
UPVC/TUBE-6-40	40
UPVC/TUBE-6-50	50
UPVC/TUBE-6-63	63
UPVC/TUBE-6-75	75
UPVC/TUBE-6-90	90
UPVC/TUBE-6-110	110
UPVC/TUBE-6-140	140
UPVC/TUBE-6-160	160
UPVC/TUBE-6-225	225

Tech Sheet 10256

### PN16, 3 Metre Lengths

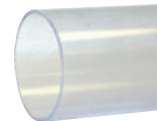
0118	OD mm
UPVC/TUBE-3-16	16
UPVC/TUBE-3-20	20
UPVC/TUBE-3-25	25
UPVC/TUBE-3-32	32
UPVC/TUBE-3-40	40
UPVC/TUBE-3-50	50
UPVC/TUBE-3-63	63
UPVC/TUBE-3-75	75
UPVC/TUBE-3-90	90
UPVC/TUBE-3-110	110
UPVC/TUBE-3-140	140
UPVC/TUBE-3-160	160
UPVC/TUBE-3-225	225

Tech Sheet 10256

## Clear UPVC Tubing

**Please Note:** Clear PVC pipe is not suitable for outdoor use without adequate UV protection.

4 Metre lengths may take up to 3 working days to be delivered, dependant on weight and delivery address location. Additional carriage charges may apply. For full details please contact sales.



### With Blue Tint, 5 Metre Lengths

0118	OD mm	Wall Thickness mm
CUPVC/TUBE2015	20	1.5
CUPVC/TUBE2515	25	1.5
CUPVC/TUBE3218	32	1.8
CUPVC/TUBE3224	32	2.4
CUPVC/TUBE4020	40	2
CUPVC/TUBE4030	40	3
CUPVC/TUBE5018	50	1.8
CUPVC/TUBE6318	63	1.8
CUPVC/TUBE6330	63	3
CUPVC/TUBE6347	63	4.7
CUPVC/TUBE-7518	75	1.8
CUPVC/TUBE-7536	75	3.6
CUPVC/TUBE-9018	90	1.8
CUPVC/TUBE-11022	110	2.2
CUPVC/TUBE-11053	110	5.3
CUPVC/TUBE-12525	125	2.5
CUPVC/TUBE-14028	140	2.8
CUPVC/TUBE-16032	160	3.2
CUPVC/TUBE-16047	160	4.7

Tech Sheet 10256

## Pipe Clips

Type 1



Type 2



Type 3



## Black PP Clips

1050	ID mm	Type
PPCLIP-16	16	1
PPCLIP-20	20	1
PPCLIP-25	25	1
PPCLIP-32	32	1
PPCLIP-40	40	2
PPCLIP-50	50	2
PPCLIP-63	63	2
PPCLIP-75	75	2
PPCLIP-90	90	2
PPCLIP-110	110	2
PPCLIP-160	160	2
PPCLIP-225	225	3

Tech Sheet 10256

# UPVC METRIC PIPE SYSTEM



**Working Temperature:**  
All pressures quoted are based on

a working temperature of 20°C  
**PVC-U Systems** should never be used for temperatures in excess of 60°C

**Maximum Working Pressure:**  
16 bar Plain fitting  
12 bar Threaded fitting

## Hose Connections

### Male Spigot, Metric x Hose Tail, Metric



1050	Tube OD mm	Hosetail mm
HN50-1212-UPVC	12	12
HN50-1616-UPVC	16	16
HN50-2020-UPVC	20	20
HN50-2525-UPVC	25	25
HN50-3232-UPVC	32	32
HN50-5050-UPVC	50	50
HN50-6060-UPVC	63	63

## Tank Connectors



### Plain x Female, BSPP

1050	Tube OD mm	Thread
TC-32-1-UPVC	32	1"
TC-10-114-UPVC	40	1.1/4"

## Threaded Adaptors

### Plain x Threaded Female Stainless Steel Reinforced, BSPP



1050	Tube OD mm	Thread
FFTA-50-112-UPVC	50	1.1/2"



### Plain Male x Threaded Female Stainless Steel Reinforced, BSPP

1050	Tube OD mm	Thread
MFTA-50-112-UPVC	50	1.1/2"

## Valves

### Standard Plain Single Union Ball Valve, EPDM Seals



1050	Tube OD mm
SUBV-32-UPVC	32

## Valve End



### UPVC Plain Valve End

1050	Tube OD mm
VE-32-UPVC	32

## Tubing Accessories

### Emery Tape 38mm x 5 Metres



1050	Size
ET-38-5	38mm x 5 Metres



### 1" Glue Brush

1050	Description
GB-1	1" Glue Brush

### Griffon UNI100 UPVC Cement



1050	Size ml
PVC250	250
PVC	500

Tech Sheet 876

### Griffon WDF-05 Quick Set Cement



1050	Size ml
QSC-250	250
WDF-05	500

### Griffon HCR-36 Chemical Cement



1050	Size ml
CHEMC-1000	1000

### Griffon UNI100 GT Slow Setting UPVC Cement



1050	Size
SSC-5000-UPVC	5 Litre

### Griffon Aqua-Max Pool Sealant



1050	Size grms
AQM-SEALANT	425

### Griffon Chamfering Tool 1/2" - 2"



1050	Description
CT-12-2	Chamfering Tool 1/2" - 2"

# UPVC IMPERIAL PIPE SYSTEM



**Recommended Working Temperature:**  
0°C to 60°C

**Pressure Ratings for Fittings:**  
15 bar (8" with reduced safety factor)

For Air Ring Mains use ABS. UPVC is not suitable for use with compressed air.

**UPVC** = Unplasticized Poly Vinyl Chloride  
**ABS** = Acrylonitrile-Butadiene-Styrene Copolymers

## Sockets & Reducing Bushes



### Equal Socket

1050	Nominal Bore ID
SO13-12-UPVC	1/2"
SO13-34-UPVC	3/4"
SO13-1-UPVC	1"
SO13-114-UPVC	1.1/4"
SO13-112-UPVC	1.1/2"
SO13-2-UPVC	2"
SO13-212-UPVC	2.1/2"
SO13-3-UPVC	3"
SO13-4-UPVC	4"
SO13-5-UPVC	5"
SO13-6-UPVC	6"
SO13-8-UPVC	8"

Tech Sheet 10254



### Socket, Imperial x Metric

1050	Nominal Bore ID	ID mm
SO14-3534-UPVC	3/4"	25
SO14-321-UPVC	1"	32
SO14-40114-UPVC	1.1/4"	40
SO14-50112-UPVC	1.1/2"	50
SO14-632-UPVC	2"	63
SO14-903-UPVC	3"	90
SO14-1104-UPVC	4"	110

Tech Sheet 10254



### Reducing Bush

1050	Nominal Bore ID	Nominal Bore ID
RB93-3412-UPVC	3/4"	1/2"
RB93-112-UPVC	1"	1/2"
RB93-134-UPVC	1"	3/4"
RB93-11412-UPVC	1.1/4"	1/2"
RB93-11434-UPVC	1.1/4"	3/4"
RB93-1141-UPVC	1.1/4"	1"
RB93-11234-UPVC	1.1/2"	3/4"
RB93-1121-UPVC	1.1/2"	1"
RB93-112114-UPVC	1.1/2"	1.1/4"
RB93-21-UPVC	2"	1"
RB93-2114-UPVC	2"	1.1/4"
RB93-2112-UPVC	2"	1.1/2"
RB93-212112-UPVC	2.1/2"	1.1/2"
RB93-2122-UPVC	2.1/2"	2"
RB93-3112-UPVC	3"	1.1/2"
RB93-32-UPVC	3"	2"
RB93-3212-UPVC	3"	2.1/2"
RB93-42-UPVC	4"	2"
RB93-4212-UPVC	4"	2.1/2"
RB93-43-UPVC	4"	3"
RB93-53-UPVC	5"	3"
RB93-54-UPVC	5"	4"
RB93-64-UPVC	6"	4"
RB93-86-UPVC	8"	6"

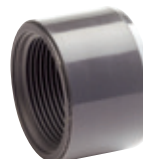
Tech Sheet 10254



### Reducing Socket

1050	Nominal Bore ID	Nominal Bore ID
RS13-3412-UPVC	3/4"	1/2"
RS13-134-UPVC	1"	3/4"
RS13-1141-UPVC	1.1/4"	1"
RS13-112112-UPVC	1.1/2"	1.1/4"
RS13-2112-UPVC	2"	1.1/2"
RS13-2122-UPVC	2.1/2"	2"
RS13-3212-UPVC	3"	2.1/2"
RS13-43-UPVC	4"	3"

Tech Sheet 10254



### Plain x Threaded Reducing Bush, BSPP

1050	Nominal Bore ID	Thread
RB30-3814-UPVC	3/8"	1/4"
RB30-1214-UPVC	1/2"	1/4"
RB30-1238-UPVC	1/2"	3/8"
RB30-3438-UPVC	3/4"	1/2"
RB30-112-UPVC	1"	3/4"
RB30-11434-UPVC	1.1/4"	1"
RB30-1121-UPVC	1.1/2"	1.1/4"
RB30-2114-UPVC	2"	1.1/2"
RB30-212112-UPVC	2.1/2"	2"
RB30-3212-UPVC	3"	2.1/2"
RB30-43-UPVC	4"	3"

Tech Sheet 10254

## Equal Barrel Nipples



### Male, BSPT

1050	Thread
BN11-14-UPVC	1/4"
BN11-38-UPVC	3/8"
BN11-12-UPVC	1/2"
BN11-34-UPVC	3/4"
BN11-1-UPVC	1"
BN11-114-UPVC	1.1/4"
BN11-112-UPVC	1.1/2"
BN11-2-UPVC	2"
BN11-212-UPVC	2.1/2"
BN11-3-UPVC	3"
BN11-4-UPVC	4"

Tech Sheet 10254



### Plain x Male, BSPT

1050	Thread	Nominal Bore ID	Length mm
BN12-38-UPVC	3/8"	3/8"	43
BN12-12-UPVC	1/2"	1/2"	50
BN12-34-UPVC	3/4"	3/4"	56
BN12-1-UPVC	1"	1"	63
BN12-114-UPVC	1.1/4"	1.1/4"	75
BN12-112-UPVC	1.1/2"	1.1/2"	88
BN12-2-UPVC	2"	2"	88
BN12-212-UPVC	2.1/2"	2.1/2"	106
BN12-3-UPVC	3"	3"	128
BN12-4-UPVC	4"	4"	153

Tech Sheet 10254

## Tube O.D. - Size Conversion Table

Nominal Bore	Outside Diameter
3/8"	17.1mm
1/2"	21.3mm
3/4"	26.7mm
1"	33.4mm
1.1/4"	42.2mm
1.1/2"	48.3mm
2"	60.3mm
2.1/2"	75mm
3"	88.9mm
4"	114.3mm
5"	140mm
6"	168.3mm
8"	219.1mm



# UPVC IMPERIAL PIPE SYSTEM



**Recommended Working Temperature:**  
0°C to 60°C

**Pressure Ratings for Fittings:**  
15 bar (8" with reduced safety factor)

For Air Ring Mains use ABS. UPVC is not suitable for use with compressed air.

**UPVC** = Unplasticized Poly Vinyl Chloride  
**ABS** = Acrylonitrile-Butadiene-Styrene Copolymers

## Elbows & Bends



### Equal 90° Elbow

1050	Nominal Bore ID
EL53-12-UPVC	1/2"
EL53-34-UPVC	3/4"
EL53-1-UPVC	1"
EL53-114-UPVC	1.1/4"
EL53-112-UPVC	1.1/2"
EL53-2-UPVC	2"
EL53-212-UPVC	2.1/2"
EL53-3-UPVC	3"
EL53-4-UPVC	4"
EL53-5-UPVC	5"
EL53-6-UPVC	6"
EL53-8-UPVC	8"

Tech Sheet 10254



### Plain x Threaded 90° Elbow, BSPP

1050	Nominal Bore ID	Thread
PVEP12	1/2"	1/2"
PVEP34	3/4"	3/4"
PVEP1	1"	1"
PVEP114	1.1/4"	1.1/4"
PVEP112	1.1/2"	1.1/2"
PVEP2	2"	2"
PVEP212	2.1/2"	2.1/2"
PVEP3	3"	3"
PVEP4	4"	4"

Tech Sheet 10254



### Equal 90° Bend Short Radius

1050	Nominal Bore ID
BE33-12-UPVC	1/2"
BE33-34-UPVC	3/4"
BE33-1-UPVC	1"
BE33-114-UPVC	1.1/4"
BE33-112-UPVC	1.1/2"
BE33-2-UPVC	2"
BE33-212-UPVC	2.1/2"
BE33-3-UPVC	3"
BE33-4-UPVC	4"

Tech Sheet 10254



### Equal 45° Elbow

1050	Nominal Bore ID
EY53-12-UPVC	1/2"
EY53-34-UPVC	3/4"
EY53-1-UPVC	1"
EY53-114-UPVC	1.1/4"
EY53-112-UPVC	1.1/2"
EY53-2-UPVC	2"
EY53-212-UPVC	2.1/2"
EY53-3-UPVC	3"
EY53-4-UPVC	4"
EY53-5-UPVC	5"
EY53-6-UPVC	6"
EY53-8-UPVC	8"

Tech Sheet 10254



### Plain x Threaded 45° Elbow, BSPP

1050	Nominal Bore ID	Thread
PVEP45-12	1/2"	1/2"
PVEP45-34	3/4"	3/4"
PVEP45-1	1"	1"
PVEP45-114	1.1/4"	1.1/4"
PVEP45-112	1.1/2"	1.1/2"
PVEP45-2	2"	2"
PVEP45-212	2.1/2"	2.1/2"
PVEP45-3	3"	3"
PVEP45-4	4"	4"

Tech Sheet 10254

## Tees



### Equal 45° Tee

1050	Nominal Bore ID
TY43-12-UPVC	1/2"
TY43-34-UPVC	3/4"
TY43-1-UPVC	1"
TY43-114-UPVC	1.1/4"
TY43-112-UPVC	1.1/2"
TY43-2-UPVC	2"

Tech Sheet 10254



### Plain x Threaded Branch Tee, BSPP

1050	Nominal Bore ID	Thread
PVTP12	1/2"	1/2"
PVTP34	3/4"	3/4"
PVTP1	1"	1"
PVTP114	1.1/4"	1.1/4"
PVTP112	1.1/2"	1.1/2"
PVTP2	2"	2"
PVTP212	2.1/2"	2.1/2"
PVTP3	3"	3"
PVTP4	4"	4"

Tech Sheet 10254



### Equal Tee

1050	Nominal Bore ID
TE43-12-UPVC	1/2"
TE43-34-UPVC	3/4"
TE43-1-UPVC	1"
TE43-114-UPVC	1.1/4"
TE43-112-UPVC	1.1/2"
TE43-2-UPVC	2"
TE43-212-UPVC	2.1/2"
TE43-3-UPVC	3"
TE43-4-UPVC	4"
TE43-5-UPVC	5"
TE43-6-UPVC	6"
TE43-8-UPVC	8"

Tech Sheet 10254

# UPVC IMPERIAL PIPE SYSTEM



**Working Temperature:**  
0°C to 60°C



**Maximum Working Pressure:**  
15 bar  
(8" with reduced safety factor)

For Air Ring Mains use ABS. UPVC is not suitable for use with compressed air.

**UPVC** = Unplasticized Poly Vinyl Chloride  
**ABS** = Acrylonitrile-Butadiene-Styrene Copolymers

## Crosses



### Equal Cross

1050	Nominal Bore ID
CR33-12-UPVC	1/2"
CR33-34-UPVC	3/4"
CR33-1-UPVC	1"
CR33-114-UPVC	1.1/4"
CR33-112-UPVC	1.1/2"
CR33-2-UPVC	2"
CR33-212-UPVC	2.1/2"

Tech Sheet 10254

## Caps



### Plain

1050	Nominal Bore ID
CA73-12-UPVC	1/2"
CA73-34-UPVC	3/4"
CA73-1-UPVC	1"
CA73-114-UPVC	1.1/4"
CA73-112-UPVC	1.1/2"
CA73-2-UPVC	2"
CA73-212-UPVC	2.1/2"
CA73-3-UPVC	3"
CA73-4-UPVC	4"
CA73-5-UPVC	5"
CA73-6-UPVC	6"
CA73-8-UPVC	8"

Tech Sheet 10254

## Unions



### Equal Union

1050	Nominal Bore ID
UN83-12-UPVC	1/2"
UN83-34-UPVC	3/4"
UN83-1-UPVC	1"
UN83-114-UPVC	1.1/4"
UN83-112-UPVC	1.1/2"
UN83-2-UPVC	2"
UN83-212-UPVC	2.1/2"
UN83-3-UPVC	3"
UN83-4-UPVC	4"

Tech Sheet 10254



### Plain x Male Threaded Union, BSPP

1050	Nominal Bore ID	Thread
PVUPM112	1.1/2"	1.1/2"
PVUPM2-112	2"	1.1/2"
PVUPM2	2"	2"

Tech Sheet 10254



### Plain x Female Threaded Union, BSPP

1050	Nominal Bore ID	Thread
PVUPF12	1/2"	1/2"
PVUPF34	3/4"	3/4"
PVUPF1	1"	1"
PVUPF114	1.1/4"	1.1/4"
PVUPF112	1.1/2"	1.1/2"
PVUPF2	2"	2"
PVUPF212	2.1/2"	2.1/2"
PVUPF3	3"	3"
PVUPF4	4"	4"

Tech Sheet 10254

## Threaded Adaptors



### Male, BSPP

1050	Nominal Bore ID	Thread
AD32-3-UPVC	1/2"	1/2"
AD32-4-UPVC	3/4"	1/2"
AD32-5-UPVC	3/4"	3/4"
AD32-6-UPVC	3/4"	1"
AD32-7-UPVC	1"	1"
AD32-8-UPVC	1"	1.1/4"
AD32-9-UPVC	1.1/4"	1.1/4"
AD32-10-UPVC	1.1/4"	1.1/2"
AD32-11-UPVC	1.1/2"	1.1/2"
AD32-12-UPVC	1.1/2"	2"
AD32-13-UPVC	2"	2"
AD32-15-UPVC	2.1/2"	2.1/2"
AD32-17-UPVC	3"	3"
AD32-19-UPVC	4"	4"

Tech Sheet 10254



### Plain x Female Threaded Adaptor, BSPP

1050	Nominal Bore ID	Thread
AD42-1212-UPVC	1/2"	1/2"
AD42-3412-UPVC	1/2"	3/4"
AD42-1234-UPVC	3/4"	1/2"
AD42-3434-UPVC	3/4"	3/4"
AD42-341-UPVC	3/4"	1"
AD42-134-UPVC	1"	3/4"
AD42-11-UPVC	1"	1"
AD42-1141-UPVC	1"	1.1/4"
AD42-114114-UPVC	1.1/4"	1.1/4"
AD42-112114-UPVC	1.1/4"	1.1/2"
AD42-112112-UPVC	1.1/2"	1.1/2"
AD42-2112-UPVC	1.1/2"	2"
AD42-1122-UPVC	2"	1.1/2"
AD42-22-UPVC	2"	2"
AD42-2122-UPVC	2"	2.1/2"
AD42-212212-UPVC	2.1/2"	2.1/2"
AD42-3212-UPVC	2.1/2"	3"
AD42-2123-UPVC	3"	2.1/2"
AD42-33-UPVC	3"	3"
AD42-43-UPVC	3"	4"
AD42-34-UPVC	4"	3"
AD42-44-UPVC	4"	4"

Tech Sheet 10254

# UPVC IMPERIAL PIPE SYSTEM



**Working Temperature:**  
0°C to 60°C

**Maximum Working Pressure:**  
15 bar  
(8" with reduced safety factor)

For Air Ring Mains use ABS. UPVC is not suitable for use with compressed air.

**UPVC** = Unplasticized Poly Vinyl Chloride  
**ABS** = Acrylonitrile-Butadiene-Styrene Copolymers

## Hose Connections



### Plain x Hose Tail

1050	Nominal Bore ID	To Suit Hose ID mm
HN63-12-UPVC	1/2"	20
HN63-34-UPVC	3/4"	25
HN63-1-UPVC	1"	32
HN63-114-UPVC	1.1/4"	40
HN63-112-UPVC	1.1/2"	50
HN63-2-UPVC	2"	60

Tech Sheet 10254



### Male, BSPP x Hose Tail

1050	Thread	To Suit Hose ID
PVHTM14-12	1/4"	12mm
PVHTM38-58	3/8"	16mm
PVHTM12	1/2"	1/2"
PVHTM12-34	1/2"	20mm
PVHTM34	3/4"	3/4"
PVHTM34-1	3/4"	25mm
PVHTM1	1"	1"
PVHTM1-114	1"	32mm
PVHTM114-112	1.1/4"	40mm
PVHTM112-2	1.1/2"	50mm
PVHTM2-212	2"	60mm

Tech Sheet 10254



### Female, BSPP x Hose Tail

1050	Thread	To Suit Hose ID mm
HN64-3416-UPVC	3/4"	16
HN64-120-UPVC	1"	20
HN64-11425-UPVC	1.1/4"	25
HN64-11230-UPVC	1.1/2"	30
HN64-240-UPVC	2"	40
HN64-21450-UPVC	2.1/4"	50
HN64-23460-UPVC	2.3/4"	60

Tech Sheet 10254

## Tank Connectors



### Plain x Female, BSPP

1050	Nominal Bore ID	Thread
TC93-12-UPVC	1/2"	1/2"
TC93-34-UPVC	3/4"	3/4"
TC93-1-UPVC	1"	1"
TC93-114-UPVC	1.1/4"	1.1/4"
TC93-112-UPVC	1.1/2"	1.1/2"
TC93-2-UPVC	2"	2"
TC93-212-UPVC	2.1/2"	2.1/2"
TC93-3-UPVC	3"	3"
TC93-4-UPVC	4"	4"

Tech Sheet 10254

## Flanges



### Stub Flange, Serrated Face

1050	Nominal Bore ID
ST23-12-UPVC	1/2"
ST23-34-UPVC	3/4"
ST23-1-UPVC	1"
ST23-114-UPVC	1.1/4"
ST23-112-UPVC	1.1/2"
ST23-2-UPVC	2"
ST23-212-UPVC	2.1/2"
ST23-3-UPVC	3"
ST23-4-UPVC	4"
ST23-5-UPVC	5"
ST23-6-UPVC	6"
ST23-8-UPVC	8"

Tech Sheet 10254



### Full Face Table E

1050	Nominal Bore ID
FF30-12-UPVC	1/2"
FF30-34-UPVC	3/4"
FF30-1-UPVC	1"
FF30-114-UPVC	1.1/4"
FF30-112-UPVC	1.1/2"
FF30-2-UPVC	2"
FF30-3-UPVC	3"
FF30-4-UPVC	4"

Tech Sheet 10254



### PN16 Blanking Flange

1050	Size
BF00-1-UPVC	1"
BF00-112-UPVC	1.1/2"
BF00-2-UPVC	2"
BF00-3-UPVC	3"
BF00-4-UPVC	4"
BF00-5-UPVC	5"

Tech Sheet 10254

### Tube O.D. - Size Conversion Table

Nominal Bore	Outside Diameter	Nominal Bore	Outside Diameter
3/8"	17.1mm	2.1/2"	75mm
1/2"	21.3mm	3"	88.9mm
3/4"	26.7mm	4"	114.3mm
1"	33.4mm	5"	140mm
1.1/4"	42.2mm	6"	168.3mm
1.1/2"	48.3mm	8"	219.1mm
2"	60.3mm		

### BS4504, PN16 Flange Gasket



1050	Size
SF16-12	1/2"
SF16-34	3/4"
SF16-1	1"
SF16-114	1.1/4"
SF16-112	1.1/2"
SF16-2	2"
SF16-3	3"
SF16-4	4"
SF16-6	6"

Tech Sheet 10254



### BS10, Table E Flange Gasket

1050	Size
SF10-12	1/2"
SF10-34	3/4"
SF10-1	1"
SF10-114	1.1/4"
SF10-112	1.1/2"
SF10-2	2"
SF10-212	2.1/2"
SF10-3	3"
SF10-4	4"
SF10-6	6"

Tech Sheet 10254



### PN16 Galvanised Backing Ring

1050	Size
GB16-12	1/2"
GB16-34	3/4"
GB16-1	1"
GB16-114	1.1/4"
GB16-112	1.1/2"
GB16-2	2"
GB16-212	2.1/2"
GB16-3	3"
GB16-4	4"
GB16-5	5"
GB16-6	6"
GB16-8	8"

Tech Sheet 10254

# UPVC IMPERIAL PIPE SYSTEM



## Valves

### Economy Double Union Ball Valve, EPDM Seals



0118	Nominal Bore ID
BVD13-12-PVC	1/2"
BVD13-34-PVC	3/4"
BVD13-1-PVC	1"
BVD13-114-PVC	1.1/4"
BVD13-112-PVC	1.1/2"
BVD13-2-PVC	2"
BVD13-212-PVC	2.1/2"
BVD13-3-PVC	3"
BVD13-4-PVC	4"

Tech Sheet 10254

### Industrial Double Union Ball Valve, EPDM Seals



0118	Nominal Bore ID
BVI13-38-PVC	3/8"
BVI13-12-PVC	1/2"
BVI13-34-PVC	3/4"
BVI13-1-PVC	1"
BVI13-114-PVC	1.1/4"
BVI13-112-PVC	1.1/2"
BVI13-2-PVC	2"
BVI13-212-PVC	2.1/2"
BVI13-3-PVC	3"
BVI13-4-PVC	4"

Tech Sheet 10254

### Industrial 3 Way Ball Valve, L Port, EPDM Seals



0118	Nominal Bore ID
BVL13-12-PVC	1/2"
BVL13-34-PVC	3/4"
BVL13-1-PVC	1"
BVL13-114-PVC	1.1/4"
BVL13-112-PVC	1.1/2"
BVL13-2-PVC	2"

Tech Sheet 10254

### Industrial 3 Way Ball Valve, T Port, EPDM Seals



0118	Nominal Bore ID
BVT13-12-PVC	1/2"
BVT13-34-PVC	3/4"
BVT13-1-PVC	1"
BVT13-112-PVC	1.1/2"
BVT13-2-PVC	2"

Tech Sheet 10254

### Industrial Check Valve, EPDM Seals



0118	Nominal Bore ID
CVD13-12-PVC	1/2"
CVD13-34-PVC	3/4"
CVD13-1-PVC	1"
CVD13-114-PVC	1.1/4"
CVD13-112-PVC	1.1/2"
CVD13-2-PVC	2"

Tech Sheet 10254

**FT PRO**



**For Air Blow Guns**  
...see pages 1549-1557

## UPVC Tubing

**NOTE:** 6 metre length tube is available on a 3 to 5 working day delivery service. Specified delivery dates and times can not be guaranteed. Carriage is charged as an extra based on weight and delivery service required. Please speak to our sales department for further details.

Delivery of 3 metre lengths may take up to 48 hours.



### Class C, 9 bar, 3 Metre Lengths

0118	Nominal Bore
UPVC/CTUBE-3-2	2"
UPVC/CTUBE-3-212	2.1/2"
UPVC/CTUBE-3-3	3"
UPVC/CTUBE-3-4	4"
UPVC/CTUBE-3-6	6"
UPVC/CTUBE-3-8	8"

Tech Sheet 10254

### Class C, 9 bar, 6 Metre Lengths

0118	Nominal Bore
UPVC/CTUBE-6-2	2"
UPVC/CTUBE-6-212	2.1/2"
UPVC/CTUBE-6-3	3"
UPVC/CTUBE-6-4	4"
UPVC/CTUBE-6-5	5"
UPVC/CTUBE-6-6	6"

Tech Sheet 10254

### Class E, 15 bar, 3 Metre Lengths

0118	Nominal Bore
UPVC/ETUBE-3-12	1/2"
UPVC/ETUBE-3-34	3/4"
UPVC/ETUBE-3-1	1"
UPVC/ETUBE-3-114	1.1/4"
UPVC/ETUBE-3-112	1.1/2"
UPVC/ETUBE-3-2	2"
UPVC/ETUBE-3-3	3"
UPVC/ETUBE-3-4	4"

Tech Sheet 10254

### Class E, 15 bar, 6 Metre Lengths

0118	Nominal Bore
UPVC/ETUBE-6-12	1/2"
UPVC/ETUBE-6-34	3/4"
UPVC/ETUBE-6-1	1"
UPVC/ETUBE-6-114	1.1/4"
UPVC/ETUBE-6-112	1.1/2"
UPVC/ETUBE-6-2	2"
UPVC/ETUBE-6-3	3"
UPVC/ETUBE-6-4	4"

Tech Sheet 10254

# UPVC IMPERIAL PIPE SYSTEM



## UPVC Tubing



### Class 7, Plain End, 3 Metre Lengths

0118	Size	Pipe OD mm	Pipe ID mm
UPVC/7TUBE-3-12	1/2"	21.4	13.4
UPVC/7TUBE-3-1	1"	33.6	24
UPVC/7TUBE-3-112	1 1/2"	48.3	37.3
UPVC/7TUBE-3-2	2"	60.3	48.3

### Class 7, Plain End, 6 Metre Lengths

0118	Size	Pipe OD mm	Pipe ID mm
UPVC/7TUBE-6-112	1.1/2"	48.3	37.3

## Threaded Adaptors

### Equal, Plain x Threaded Female Stainless Steel Reinforced, BSPP



1050	Nominal Bore ID	Thread
ESRI-12	1/2"	1/2"
ESRI-34	3/4"	3/4"
ESRI-1	1"	1"
ESRI-2	2"	2"

### Equal, Plain x Threaded Female



1050	Tube NB	Thread
ESI-12	1/2"	1/2"
ESI-34	3/4"	3/4"
ESI-1	1"	1"
ESI-114	1.1/4"	1.1/4"
ESI-112	1.1/2"	1.1/2"
ESI-2	2"	2"

## Unions

### Plain x Brass Composite Male Threaded Union, BSPP



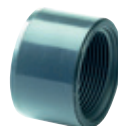
1050	Nominal Bore ID	Male BSPP
MBU-1	1"	1"

### Plain x Brass Composite Female Threaded Union, BSPP



1050	Nominal Bore ID	Female BSPP
FBU-112	1.1/2"	1.1/2"

## Reducing Bushes



### Plain x Threaded Female, BSPP

1050	Nominal Bore ID	Thread
RB30-1238-UPVC	3/4"	1/2"



### Threaded Male x Female, BSPP (Long Pattern)

1050	Male Thread	Female Thread
PVR112-1	1.1/2"	1"
PVR2-1	2"	1"
PVR212-112	2.1/2"	1.1/2"



### Threaded Male x Female, BSPP (Short Pattern)

1050	Male Thread	Female Thread
PVRB34-12	3/4"	1/2"
PVRB1-34	1"	3/4"
PVRB114-1	1.1/4"	1"
PVRB112-114	1.1/2"	1.1/4"
PVRB2-112	2"	1.1/2"

## Equal Hex Nipples



### Equal, Male, BSPP

1050	Thread
PVN1	1"
PVN2	2"

## Unequal Hex Nipples



### Unequal, Male, BSPP

1050	Thread	Thread
PVRN1-34	1"	3/4"
PVRN112-114	1.1/2"	1.1/4"

## Backnuts



### Female, BSPP

1050	Thread
PVLN12	1/2"
PVLN1	1"
PVLN114	1.1/4"

## Valve End



### Female, BSPP

1050	Thread
TVI-2	2"

## Valves



### Standard Plain Single Union Ball Valve, EPDM Seals

0118	Nominal Bore ID
BVSU-34	3/4"
BVSU-1	1"
BVSU-114	1.1/4"
BVSU-112	1.1/2"



### Standard Lever Operated Butterfly Valve, EPDM Liner

0118	Nominal Bore ID
BVBS-6	6"

## Pipe Clips



### Black PP Pipe Clips

1050	Nominal Bore ID	Type
IPPClip-12	1/2"	1
IPPClip-34	3/4"	1
IPPClip-1	1"	1
IPPClip-114	1.1/4"	2
IPPClip-112	1.1/2"	2
IPPClip-2	2"	2
IPPClip-212	2.1/2"	2
IPPClip-3	3"	2
IPPClip-4	4"	2
IPPClip-5	5"	3

## Spacing Blocks



### Black PP Spacing Block

1050	Nominal Bore ID
IPPSB-1	1" - 32mm
IPPSB-2	2" - 63mm

# UPVC THREADED FITTINGS



## Double Socket



Female, BSPP

1050	Thread
PVS12	1/2"
PVS34	3/4"
PVS1	1"
PVS114	1.1/4"
PVS112	1.1/2"
PVS2	2"

## Reducing Socket



Female, BSPP

1050	Thread	Thread
PVRS12-38	1/2"	3/8"
PVRS34-12	3/4"	1/2"
PVRS1-34	1"	3/4"
PVRS114-1	1.1/4"	1"
PVRS112-114	1.1/2"	1.1/4"
PVRS2-112	2"	1.1/2"
PVRS3-212	3"	2.1/2"
PVRS4-3	4"	3"

## Enlarging Piece



Male x Female, BSPP

1050	Male Thread	Female Thread
PVEN38-12	3/8"	1/2"
PVEN12-34	1/2"	3/4"
PVEN34-1	3/4"	1"
PVEN1-114	1"	1.1/4"
PVEN114-112	1.1/4"	1.1/2"
PVEN112-2	1.1/2"	2"
PVEN2-212	2"	2.1/2"
PVEN212-3	2.1/2"	3"
PVEN3-4	3"	4"

## Reducing Male x Female



Male x Female, BSPP

1050	Male Thread	Female Thread
PVR12-38	1/2"	3/8"
PVR34-38	3/4"	3/8"
PVR34-12	3/4"	1/2"
PVR1-38	1"	3/8"
PVR1-12	1"	1/2"
PVR1-34	1"	3/4"
PVR114-12	1.1/4"	1/2"
PVR114-34	1.1/4"	3/4"
PVR114-1	1.1/4"	1"
PVR112-34	1.1/2"	3/4"
PVR112-1	1.1/2"	1"
PVR2-1	2"	1"
PVR2-114	2"	1.1/4"
PVR2-112	2"	1.1/2"
PVR212-112	2.1/2"	1.1/2"
PVR212-2	2.1/2"	2"
PVR3-112	3"	1.1/2"
PVR3-2	3"	2"
PVR3-212	3"	2.1/2"
PVR4-2	4"	2"
PVR4-212	4"	2.1/2"
PVR4-3	4"	3"

## Reducing Bush Male x Female



Male x Female, BSPP

1050	Male Thread	Female Thread
PVRB34-12	3/4"	1/2"
PVRB1-34	1"	3/4"
PVRB114-1	1.1/4"	1"
PVRB112-114	1.1/2"	1.1/4"
PVRB2-112	2"	1.1/2"
PVRB212-2	2.1/2"	2"
PVRB3-212	3"	2.1/2"
PVRB4-3	4"	3"

## Nipple



Male, BSPP

1050	Thread
PVN38	3/8"
PVN12	1/2"
PVN34	3/4"
PVN1	1"
PVN114	1.1/4"
PVN112	1.1/2"
PVN2	2"
PVN212	2.1/2"
PVN4	4"

## Reducing Nipple



Male, BSPP

1050	Thread	Thread
PVRN34-12	3/4"	1/2"
PVRN1-34	1"	3/4"
PVRN114-1	1.1/4"	1"
PVRN112-114	1.1/2"	1.1/4"
PVRN212-2	2.1/2"	2"
PVRN3-212	3"	2.1/2"
PVRN4-3	4"	3"

**RUST-OLEUM®**



For Leak Seal  
...see pages 1564

# UPVC THREADED FITTINGS



## Elbow 90°



### Female, BSPP

1050	Thread
PVE12	1/2"
PVE34	3/4"
PVE1	1"
PVE114	1.1/4"
PVE112	1.1/2"
PVE2	2"
PVE212	2.1/2"
PVE3	3"

## Elbow 45°



### Female, BSPP

1050	Thread
PVE45-38	3/8"
PVE45-12	1/2"
PVE45-34	3/4"
PVE45-1	1"
PVE45-114	1.1/4"
PVE45-112	1.1/2"
PVE45-2	2"
PVE45-212	2.1/2"
PVE45-3	3"
PVE45-4	4"

## Tee 90°



### Female, BSPP

1050	Thread
PVT38	3/8"
PVT12	1/2"
PVT34	3/4"
PVT1	1"
PVT114	1.1/4"
PVT112	1.1/2"
PVT2	2"
PVT3	3"
PVT4	4"

## Union



### Female, BSPP

1050	Thread
PVU38	3/8"
PVU12	1/2"
PVU34	3/4"
PVU1	1"
PVU114	1.1/4"
PVU112	1.1/2"
PVU2	2"
PVU212	2.1/2"
PVU3	3"
PVU4	4"

## Cap



### Female, BSPP

1050	Thread
PVC38	3/8"
PVC12-CAP	1/2"
PVC34	3/4"
PVC1	1"
PVC114	1.1/4"
PVC112	1.1/2"
PVC2	2"
PVC212	2.1/2"
PVC3	3"
PVC4	4"

## Plug



### Male, BSPP

1050	Thread
PVP38	3/8"
PVP12	1/2"
PVP34	3/4"
PVP1	1"
PVP112	1.1/2"
PVP2	2"
PVP212	2.1/2"
PVP3	3"
PVP4	4"

## Locknuts



### Female, BSPP

1050	Thread
PVLN38	3/8"
PVLN12	1/2"
PVLN34	3/4"
PVLN1	1"
PVLN114	1.1/4"
PVLN112	1.1/2"
PVLN2	2"
PVLN212	2.1/2"
PVLN3	3"
PVLN4	4"



For Air Prep  
...see pages 637-656





**M-Press Fittings Ltd**

## **Stainless Steel 316L & Copper Press Fit Piping System**

**M-Press provides solutions to  
meet the demands of various  
industry applications, with  
capabilities of up to 168mm**



stainless  
steel



**Choose M-Press for  
industry-leading  
Press Fit solutions**

# Stainless Steel 316L Press Fit Piping System

M-Press's stainless steel ring main system is the perfect solution for all ring main installation requirements.

The M-Press Press Fit system is an all-inclusive and quality-assured system designed to streamline on-site compliances for installers. It removes the need for traditional site hot-work permits, making the installation process hassle-free and efficient. The M-Profile system is equipped with advanced pressing technology that ensures a confident installation process, saving installers considerable time and effort, which ultimately leads to increased productivity and cost savings.

M-Press's Stainless Steel system has been engineered for use in a diverse range of industry applications, providing installers with a versatile solution. This and all other system features ensure that the installation process is always of the highest quality, making the installer's work hassle-free and efficient.



## Features:

- WRAS certified
- Gas EN331 certified
- High molybdenum content offering excellent corrosion resistance
- Universally compatible with all M-Profile systems
- Reliable and durable press system
- Leak-free performance
- Excellent hygienic characteristics

## Advantages:

- Removes the need for traditional site hot-work permits
- Ease of installation
- Increased productivity
- Wide choice of products and seal types
- Clean and hassle-free handling
- Lightweight system

## The M-Press system is manufactured to meet the highest standards and materials:

- ✓ **M-Press fittings material no:**  
1.4404 according to EN 10088 /316L
- ✓ **Threaded fittings material no:**  
1.4408 according to EN 10283 /316L
- ✓ **Pipes material no:**  
1.4404 according to EN 10312 (ECO 316L).


**M-Press can offer solutions for all  
industry application demands up to 168mm**

## EPDM Seals



<b>Material</b>	Stainless Steel 316L
<b>Formed Fittings:</b>	1.4404 according to EN 10088 /316L
<b>Threaded Fittings:</b>	1.4408 according to EN 10283 /316L
<b>Pipe:</b>	1.4404 according to EN 10312 (ECO 316L)
<b>Seal Type:</b>	EPDM
<b>Description:</b>	Ethylene Propylene Diene Mnomer

 **Temperature:**  
-30°C to +120°C

 **Pressure:**  
PN16 16 bar

### Applications

- Potable water services
- Hydronic heating
- Compressed air
- BCWS (Boosted cold water services)
- Chilled water applications
- Purified water
- Fire suppression systems
- Inert gases

### Application Services


- Drinking water
- HWS and commercial/domestic heating
- Compressed air (<25mg/M<sup>3</sup> compressor oil concentration)
- Risers and plant rooms
- Cooling water (chilled water) with glycol <50% concentration
- Grey water
- Low pressure steam condensate
- Kitchen fire sprinkler/suppression systems
- Helium, Neon, Argon

## HNBR Gas Approved Seals



<b>Material</b>	Stainless Steel 316L
<b>Formed Fittings:</b>	1.4404 according to EN 10088 /316L
<b>Threaded Fittings:</b>	1.4408 according to EN 10283 /316L
<b>Pipe:</b>	1.4404 according to EN 10312 (ECO 316L)
<b>Seal Type:</b>	HNBR
<b>Description:</b>	Hydrogenated Nitrile Butadiene Rubber

 **Temperature:**  
-20°C to +70°C

 **Pressure:**  
PN5 5 bar

### Applications

- Industrial offshore applications
- Low pressure hydraulic systems
- Hot water supply
- Flammable gases (DVGW G260, 262)
- Inert gases


### Application Services


- Commercial / industrial methane gas
- Low pressure hydraulic oil
- Commercial / industrial LPG and natural gases
- Helium, Argon, Neon

## FKM Seals



<b>Material</b>	Stainless Steel 316L
<b>Formed Fittings:</b>	1.4404 according to EN 10088 /316L
<b>Threaded Fittings:</b>	1.4408 according to EN 10283 /316L
<b>Pipe:</b>	1.4404 according to EN 10312 (ECO 316L)
<b>Seal Type:</b>	FKM
<b>Description:</b>	Viton Fluoroelastomer

 **Temperature:**  
-30°C to +180°C  
(+230°C for short periods)

 **Pressure:**  
PN16 16 bar

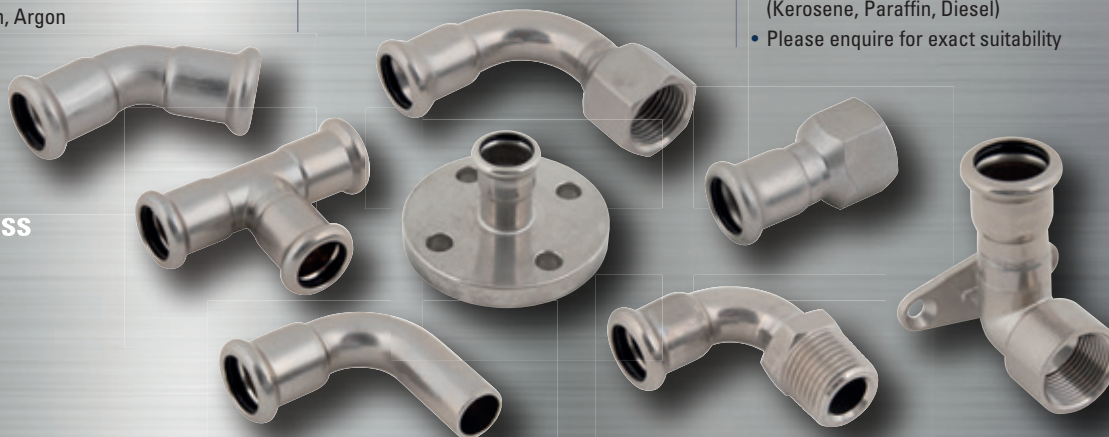
### Applications

- Domestic and commercial solar thermal heating
- Domestic and commercial heating
- Commercial steam condensate
- Industrial compressed air
- Acidic transportation
- Hydraulic applications
- Oil and fuels

### Application Services

- High temperature heating and hot water systems
- Commercial warehouse/large area heating systems
- Low pressure steam condensate
- Industrial compressed air systems (>25mg/M<sup>3</sup> compressor oil concentration)
- Some acid solutions
- Hydraulic oils
- Heavy oil and fuel transportation (Kerosene, Paraffin, Diesel)
- Please enquire for exact suitability

stainless  
steel



## Adaptors



### Female x Female Threaded, BSPP, EPDM Seal

3102	Size mm	Thread
1202015012	15	3/8"
1202015012	15	1/2"
1202015034	15	3/4"
1202022012	22	1/2"
1202022034	22	3/4"
1202022100	22	1"
1202028034	28	3/4"
1202028100	28	1"
1202035100	35	1"
1202035114	35	1.1/4"
1202042112	42	1.1/2"
1202054200	54	2"



### Female x Male Threaded, BSPP, EPDM Seal

3102	Size mm	Thread
1201015012	15	1/2"
1201015034	15	3/4"
1201015038	15	3/8"
1201022012	22	1/2"
1201022034	22	3/4"
1201022100	22	1"
1201028034	28	3/4"
1201028100	28	1"
1201035100	35	1"
1201035114	35	1.1/4"
1201042112	42	1.1/2"
1201054200	54	2"



### Female x Male Threaded, BSPP, EPDM Seal

3102	Size mm	Thread
1208015012	15	1/2"
1208022034	22	3/4"
1208028100	28	1"
1208035114	35	1.1/4"
1208042112	42	1.1/2"
1208054200	54	2"



### Female x Female Threaded, BSPP, HNBR Gas Approved Seal

3102	Size mm	Thread
1702015038	15	3/8"
1702015012	15	1/2"
1702015034	15	3/4"
1702022012	22	1/2"
1702022034	22	3/4"
1702022100	22	1"
1702028034	28	3/4"
1702028100	28	1"
1702035100	35	1"
1702035114	35	1.1/4"
1702042112	42	1.1/2"
1702054200	54	2"



### Female x Male Threaded, BSPP, HNBR Gas Approved Seal

3102	Size mm	Thread
1701015012	15	1/2"
1701015034	15	3/4"
1701015038	15	3/8"
1701022012	22	1/2"
1701022034	22	3/4"
1701022100	22	1"
1701028034	28	3/4"
1701028100	28	1"
1701035100	35	1"
1701035114	35	1.1/4"
1701042112	42	1.1/2"
1701054200	54	2"



### Female x Male Threaded, BSPP, HNBR Gas Approved Seal

3102	Size mm	Thread
1708015012	15	1/2"
1708022034	22	3/4"
1708028100	28	1"
1708035114	35	1.1/4"
1708042112	42	1.1/2"
1708054200	54	2"



### Female x Female Threaded, BSPP, FKM Seal

3102	Size mm	Thread
1402015038	15	3/8"
1402015012	15	1/2"
1402015034	15	3/4"
1402022012	22	1/2"
1402022034	22	3/4"
1402022100	22	1"
1402028034	28	3/4"
1402028100	28	1"
1402035100	35	1"
1402035114	35	1.1/4"
1402042112	42	1.1/2"
1402054200	54	2"



### Female x Male Threaded, BSPP, FKM Seal

3102	Size mm	Thread
1401015012	15	1/2"
1401015034	15	3/4"
1401015038	15	3/8"
1401022012	22	1/2"
1401022034	22	3/4"
1401022100	22	1"
1401028034	28	3/4"
1401028100	28	1"
1401035100	35	1"
1401035114	35	1.1/4"
1401042112	42	1.1/2"
1401054200	54	2"



### Female x Male Threaded, BSPP, FKM Seal

3102	Size mm	Thread
1408015012	15	1/2"
1408022034	22	3/4"
1408028100	28	1"
1408035114	35	1.1/4"
1408042112	42	1.1/2"
1408054200	54	2"



## Straight Couplings



Female x Female,  
EPDM Seal

3102	Size mm
120001515	15
120002222	22
120002828	28
120003535	35
120004242	42
120005454	54

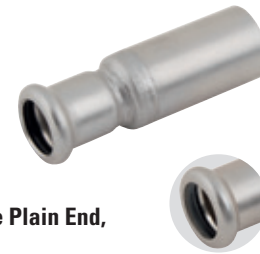
## Slip Couplers



Female x Female,  
EPDM Seal

3102	Size mm
120401515	15
120402222	22
120402828	28
120403535	35
120404242	42
120405454	54

## Socket Reducers



Female x Male Plain End,  
EPDM Seal

3102	Size mm	Size mm
124302215	22	15
124302815	28	15
124302822	28	22
124303522	35	22
124303528	35	28
124304222	42	22
124304228	42	28
124304235	42	35
124305422	54	22
124305428	54	28
124305435	54	35
124305442	54	42



Female x Female,  
HNBR Gas Approved Seal



3102	Size mm
170001515	15
170002222	22
170002828	28
170003535	35
170004242	42
170005454	54



Female x Female,  
HNBR Gas Approved Seal



3102	Size mm
170401515	15
170402222	22
170402828	28
170403535	35
170404242	42
170405454	54



Female x Male Plain End,  
HNBR Gas Approved Seal



3102	Size mm	Size mm
174302215	22	15
174302815	28	15
174302822	28	22
174303522	35	22
174303528	35	28
174304222	42	22
174304228	42	28
174304235	42	35
174305422	54	22
174305428	54	28
174305435	54	35
174305442	54	42

Female x Female,  
FKM Seal



3102	Size mm
140001515	15
140002222	22
140002828	28
140003535	35
140004242	42
140005454	54

Female x Female,  
FKM Seal



3102	Size mm
140401515	15
140402222	22
140402828	28
140403535	35
140404242	42
140405454	54

Female x Male Plain End,  
FKM Seal



3102	Size mm	Size mm
144302215	22	15
144302815	28	15
144302822	28	22
144303522	35	22
144303528	35	28
144304222	42	22
144304228	42	28
144304235	42	35
144305422	54	22
144305428	54	28
144305435	54	35
144305442	54	42

## End Caps



**Female x End Cap,  
EPDM Seal**

3102	Size mm
1241015	15
1241022	22
1241028	28
1241035	35
1241042	42
1241054	54

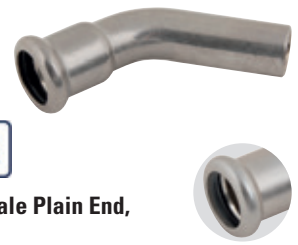
## 45° Elbows



**Female x Female,  
EPDM Seal**

3102	Size mm
122301515	15
122302222	22
122302828	28
122303535	35
122304242	42
122305454	54

## 45° Street Elbows



**Female x Male Plain End,  
EPDM Seal**

3102	Size mm
122401515	15
122402222	22
122402828	28
122403535	35
122404242	42
122405454	54

## DVGW

**Female x End Cap,  
HNBR Gas Approved Seal**



3102	Size mm
1741015	15
1741022	22
1741028	28
1741035	35
1741042	42
1741054	54

## DVGW

**Female x Female,  
HNBR Gas Approved Seal**



3102	Size mm
172301515	15
172302222	22
172302828	28
172303535	35
172304242	42
172305454	54

## DVGW

**Female x Male Plain End,  
HNBR Gas Approved Seal**



3102	Size mm
172401515	15
172402222	22
172402828	28
172403535	35
172404242	42
172405454	54

**Female x End Cap,  
FKM Seal**



3102	Size mm
1441015	15
1441022	22
1441028	28
1441035	35
1441042	42
1441054	54

**Female x Female,  
FKM Seal**



3102	Size mm
142301515	15
142302222	22
142302828	28
142303535	35
142304242	42
142305454	54

**Female x Male Plain End,  
FKM Seal**



3102	Size mm
142401515	22
142402222	28
142402828	35
142403535	42
142404242	54
142405454	54

## EPDM Seals

 **Temperature:**  
-30°C to +120°C

 **Pressure:**  
PN16 16 bar



**Description:** Ethylene Propylene Diene Mnomer

## HNBR Gas Approved Seals


 **Temperature:**  
-20°C to +70°C

 **Pressure:**  
PN5 5 bar



**Description:** Hydrogenated Nitrile Butadiene Rubber

## FKM Seals

 **Temperature:**  
-30°C to +180°C  
(+230°C for short periods)

 **Pressure:**  
PN16 16 bar



**Description:** Viton Fluoroelastomer

## Equal Tees



Female x Female x Female, EPDM Seal

3102	Size mm
12100151515	15
12100222222	22
12100282828	28
12100353535	35
12100424242	42
12100545454	54



Female x Female x Female, HNBR Gas Approved Seal

3102	Size mm
17100151515	15
17100222222	22
17100282828	28
17100353535	35
17100424242	42
17100545454	54

Female x Female x Female, FKM Seal

3102	Size mm
14100151515	15
14100222222	22
14100282828	28
14100353535	35
14100424242	42
14100545454	54

## Reducing Tees



Female x Female x Female, EPDM Seal

3102	Size mm	Size mm	Size mm
12110221522	22	15	22
12110281528	28	25	28
12110282228	28	22	28
12110352235	35	22	35
12110352835	35	28	35
12110422242	42	22	42
12110422842	42	28	42
12110423542	42	35	42
12110542254	54	22	54
12110542854	54	28	54
12110543554	54	35	54
12110544254	54	42	54



Female x Female x Female, HNBR Gas Approved Seal

3102	Size mm	Size mm	Size mm
17110221522	22	15	22
17110281528	28	25	28
17110282228	28	22	28
17110352235	35	22	35
17110352835	35	28	35
17110422242	42	22	42
17110422842	42	28	42
17110423542	42	35	42
17110542254	54	22	54
17110542854	54	28	54
17110543554	54	35	54
17110544254	54	42	54

Female x Female x Female, FKM Seal

3102	Size mm	Size mm	Size mm
14110221522	22	15	22
14110281528	28	25	28
14110282228	28	22	28
14110352235	35	22	35
14110352835	35	28	35
14110422242	42	22	42
14110422842	42	28	42
14110423542	42	35	42
14110542254	54	22	54
14110542854	54	28	54
14110543554	54	35	54
14110544254	54	42	54



Female x Female Threaded, BSPP x Female, EPDM Seal

3102	Size mm	Thread	Size mm
12120151215	15	1/2"	15
12120153815	15	3/8"	15
12120221222	22	1/2"	22
12120223422	22	3/4"	22
12120281228	28	1/2"	28
12120283428	28	3/4"	28
12120351235	35	1/2"	35
12120353435	35	3/4"	35
12120421242	42	1/2"	42
12120423442	42	3/4"	42
12120543454	54	1/2"	54
12120541254	54	3/4"	54



Female x Female Threaded, BSPP x Female, HNBR Gas Approved Seal

3102	Size mm	Thread	Size mm
17120151215	15	1/2"	15
17120153815	15	3/8"	15
17120221222	22	1/2"	22
17120223422	22	3/4"	22
17120281228	28	1/2"	28
17120283428	28	3/4"	28
17120351235	35	1/2"	35
17120353435	35	3/4"	35
17120421242	42	1/2"	42
17120423442	42	3/4"	42
17120541254	54	1/2"	54
17120543454	54	3/4"	54

Female x Female Threaded, BSPP x Female, FKM Seal

3102	Size mm	Thread	Size mm
14120151215	15	1/2"	15
14120153815	15	3/8"	15
14120221222	22	1/2"	22
14120223422	22	3/4"	22
14120281218	28	1/2"	28
14120283428	28	3/4"	28
14120351235	35	1/2"	35
14120353435	35	3/4"	35
14120421242	42	1/2"	42
14120423442	42	3/4"	42
14120541254	54	1/2"	54
14120543454	54	3/4"	54

**RIDGID**



You might also need...  
**RIDGID RP 351 Press Tool**  
...see page 1744

## 90° Elbows



**Female x Female,  
EPDM Seal**

3102	Size mm
122001515	15
122002222	22
122002828	28
122003535	35
122004242	42
122005454	54

## 90° Bends



**Female x Female Threaded,  
BSPP, EPDM Seal**

3102	Size mm	Thread
1232015012	15	1/2"
1232012038	15	3/8"
1232022034	22	3/4"
1232022012	22	1/2"
1232028012	28	1/2"
1232028100	28	1"
1232035012	35	1/2"
1232035114	34	1.1/4"



**Female x Male Threaded,  
BSPP, EPDM Seal**

3102	Size mm	Thread
1231015012	15	1/2"
1231015038	15	3/8"
1231022034	22	3/4"
1231028100	28	1"
1231035114	35	1.1/4"
1231042112	42	1.1/2"
1231054200	54	2"

8



**Female x Female,  
HNBR Gas Approved Seal**



3102	Size mm
172001515	15
172002222	22
172002828	28
172003535	35
172004242	42
172005454	54



**Female x Female Threaded,  
BSPP, HNBR Gas Approved Seal**



3102	Size mm	Thread
1732015012	15	1/2"
1732015038	15	3/8"
1732015034	22	3/4"
1732015012	22	1/2"
1732028012	28	1/2"
1732028100	28	1"
1732035012	35	1/2"
1732035114	34	1.1/4"



**Female x Male Threaded,  
BSPP, HNBR Gas Approved Seal**



3102	Size mm	Thread
1731015012	15	1/2"
1731015038	15	3/8"
1731022034	22	3/4"
1731028100	28	1"
1731035114	35	1.1/4"
1731042112	42	1.1/2"
1731054200	54	2"

**Female x Female,  
FKM Seal**



3102	Size mm
142001515	15
142002222	22
142002828	28
142003535	35
142004242	42
142005454	54

**Female x Female Threaded,  
BSPP, FKM Seal**



3102	Size mm	Thread
1432015012	15	1/2"
1432015038	15	3/8"
1432022034	22	3/4"
1432022012	22	1/2"
1432028012	28	1/2"
1432028100	28	1"
1432035012	35	1/2"
1432035114	34	1.1/4"

**Female x Male Threaded,  
BSPP, FKM Seal**



3102	Size mm	Thread
1431015012	15	1/2"
1431015038	15	3/8"
1431022034	22	3/4"
1431028100	28	1"
1431035114	35	1.1/4"
1431042112	42	1.1/2"
1431054200	54	2"

## EPDM Seals

Temperature:  
-30°C to +120°C

Pressure:  
PN16 16 bar



**Description:** Ethylene Propylene Diene Mnomer

## HNBR Gas Approved Seals

Temperature:  
-20°C to +70°C

Pressure:  
PN5 5 bar



**Description:** Hydrogenated Nitrile Butadiene Rubber

## FKM Seals

Temperature:  
-30°C to +180°C  
(+230°C for short periods)

Pressure:  
PN16 16 bar



**Description:** Viton Fluoroelastomer



## 90° Street Elbows



Female x Male Plain End,  
EPDM Seal

3102	Size mm
122101515	15
122102222	22
122102828	28
122103535	35
122104242	42
122105454	54



Female x Male Plain End,  
HNBR Gas Approved Seal

3102	Size mm
172101515	15
172102222	22
172102828	28
172103535	35
172104242	42
172105454	54

Female x Male Plain End,  
FKM Seal

3102	Size mm
142101515	15
142102222	22
142102828	28
142103535	35
142104242	42
142105454	54

## Wallplates



Female x Female Threaded,  
BSPP, EPDM Seal

3102	Size mm	Thread
1234015012	15	1/2"
1234022034	22	3/4"



Female x Female Threaded,  
BSPP, HNBR Gas Approved Seal

3102	Size mm	Thread
1734015012	15	1/2"
1734022034	22	3/4"

Female x Female Threaded,  
BSPP, FKM Seal

3102	Size mm	Thread
1434015012	15	1/2"
1434022034	22	3/4"

## Flange Adaptors



Female PN16,  
EPDM Seal

3102	Size mm
1240022	22
1240028	28
1240035	35
1240042	42
1240054	54



Female PN16,  
HNBR Gas Approved Seal

3102	Size mm
1740022	22
1740028	28
1740035	35
1740042	42
1740054	54

Female PN16,  
FKM Seal

3102	Size mm
1440022	22
1440028	28
1440035	35
1440042	42
1440054	54

# RIDGID

You might also need...  
**RIDGID Press Tool**  
...see page 1744



## Partial Crossovers



**Male Plain End x Male Plain End,  
Formed Pipe**

3102	Size mm
123601515	15
123602222	22
123602828	28
123603535	35
123604242	42
123605454	54

## 90° Bends



**Plain Male x Plain Male,  
Formed Pipe**

3102	Size mm
123501515	15
123502222	22
123502828	28
123503535	35
123504242	42
123505454	54

## 45° Bends



**Plain Male x Plain Male,  
Formed Pipe**

3102	Size mm
123801515	15
123802222	22
123802828	28
123803535	35
123804242	42
123805454	54

## Pipe



### Series 1, 3 Metre Lengths

3102	Size mm	Wall Thickness
129501506-3MTR	15	0.6
129502207-3MTR	22	0.7
129502808-3MTR	28	0.8
129503510-3MTR	35	1.0
2023-9901-3MTR	42	1.1
129505412-3MTR	54	1.2



### Series 2, 3 Metre Lengths

3102	Size mm	Wall Thickness
129001510-3MTR	15	1.0
129002212-3MTR	22	1.2
129002812-3MTR	28	1.2
129003515-3MTR	35	1.5
129004215-3MTR	42	1.5
129005415-3MTR	54	1.5

### Series 1, 6 Metre Lengths

3102	Size mm	Wall Thickness
129501506	15	0.6
129502207	22	0.7
129502808	28	0.8
129503510	35	1.0
129504211	42	1.1
129505412	54	1.2



### Series 2, 6 Metre Lengths

3102	Size mm	Wall Thickness
129001510	15	1.0
129002212	22	1.2
129002812	28	1.2
129003515	35	1.5
129004215	42	1.5
129005415	54	1.5



## 316L Stainless Steel Press Fit Ball Valves


 **Working Temperature:**  
-10°C to +120°C

 **Maximum Working Pressure:**  
16 bar



**WRAS, Female x Female,  
EPDM Seal**

3105	Size mm
SS60015BH	15
SS60022BH	22
SS60028BH	28
SS60035BH	35
SS60042BH	42
SS60054BH	54

 **Working Temperature:**  
-20°C to +70°C

 **Maximum Working Pressure:**  
5 bar



**GAS, Female x Female,  
HNBR Gas Approved Seal**

3105	Size mm
SS60015YH	15
SS60022YH	22
SS60028YH	28
SS60035YH	35
SS60042YH	42
SS60054YH	54

**DVGW**

# Copper Press Fit Piping System

The M-Press copper ring main system is the leading solution for all copper installation requirements.

Its innovative design and superior quality guarantee a hassle-free installation process and long-lasting performance.

M-Press's copper system is a versatile and reliable solution for a wide range of industrial and domestic applications. Its innovative design and high-quality construction guarantee a seamless installation process with minimal downtime and complications for the installer.

The system features a range of advanced components and features, including durable copper piping, precision-engineered fittings, and advanced sealing technologies, to ensure maximum performance and reliability in even the most demanding environments.

Whether working on a large industrial project or installing a domestic heating system, M-Press's Copper Press Fit system is the preferred solution for your needs.



## Features:

- WRAS certified
- Gas EN331 certified
- Universally compatible with all M-Profile systems
- Reliable and durable press system
- Leak-free performance

## Advantages:

- Ease of installation
- Increased productivity
- Removes the need for traditional site hot-work permits
- Wide choice of products and seal types
- Clean and hassle-free handling
- Lightweight system

## The M-Press system is manufactured to meet the highest standards and materials:

- ✓ **Fittings:** CW024A according to EN 1254
- ✓ **Threaded fittings:** CC499K according to EN 1282


**Trust M-Press to provide a reliable and efficient solution for your ring main installation**

## EPDM Seals



<b>Material</b>	Copper
<b>Formed Fittings:</b>	CW024A according to EN1254
<b>Threaded Fittings:</b>	CC499K according to EN1282
<b>Pipe:</b>	EN1057
<b>Seal Type:</b>	EPDM
<b>Description:</b>	Ethylene Propylene Diene Mnomer

 **Temperature:**  
-30°C to +120°C

 **Pressure:**  
PN16 16 bar

### Applications

- Potable water services
- Hydronic heating
- Compressed air
- BCWS (Boosted cold water services)
- Chilled water applications
- Purified water
- Inert gases

### Application Services

- Drinking water
- HWS and commercial/domestic heating
- Compressed air (<25mg/M<sup>3</sup> compressor oil concentration)
- Risers and plant rooms
- Cooling water (chilled water) with glycol <50% concentration
- Grey water
- Low pressure steam condensate
- Helium, Neon, Argon


## HNBR Gas Approved Seals



 **DVGW** DVGW G260 & G262

<b>Material</b>	Copper
<b>Formed Fittings:</b>	CW024A according to EN1254
<b>Threaded Fittings:</b>	CC499K according to EN1282
<b>Pipe:</b>	EN1057
<b>Seal Type:</b>	HNBR
<b>Description:</b>	Hydrogenated Nitrile Butadiene Rubber

 **Temperature:**  
-20°C to +70°C

 **Pressure:**  
PN5 5 bar

### Applications

- Offshore applications
- Low pressure hydraulic systems
- Hot water supply
- Flammable gases (DVGW G260, 262)
- Inert gases

### Application Services


- Methane gas transportation
- Low pressure hydraulic system
- Domestic and commercial heating systems
- Natural gas and LPG
- Helium, Neon, Argon

## FKM Seals



<b>Material</b>	Copper
<b>Formed Fittings:</b>	CW024A according to EN1254
<b>Threaded Fittings:</b>	CC499K according to EN1282
<b>Pipe:</b>	EN1057
<b>Seal Type:</b>	FKM
<b>Description:</b>	Viton Fluoroelastomer

 **Temperature:**  
-30°C to +180°C  
(+230°C for short periods)

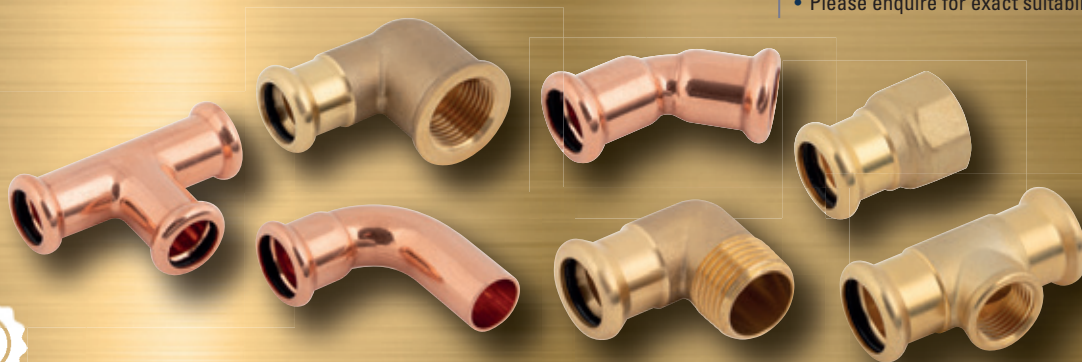
 **Pressure:**  
PN16 16 bar

### Applications

- Domestic and commercial solar thermal heating
- Domestic and commercial heating
- Commercial steam condensate
- Industrial compressed air
- Acidic transportation
- Hydraulic applications
- Oil and fuels

### Application Services

- High temperature heating and hot water systems
- Commercial warehouse/ Large area heating systems
- Low pressure steam condensate
- Industrial compressed air systems (>25mg/M<sup>3</sup> compressor oil concentration)
- Some acid solutions
- Hydraulic oils
- Heavy oil and fuel transportation (Kerosene, Parafin, Diesel)
- Please enquire for exact suitability



Adaptors



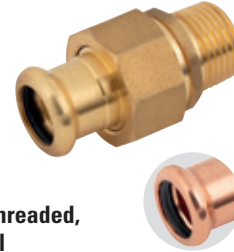
Female x Female Threaded, BSPP, EPDM Seal

3104	Size mm	Thread
6802015012	15	1/2"
6802015034	15	3/4"
6802022012	22	1/2"
6802022034	22	3/4"
6802022100	22	1"
6802028034	28	3/4"
6802028100	28	1"
6802035114	35	1.1/4"
6802042112	42	1.1/2"
6802054200	54	2"



Female x Female Threaded, BSPP, EPDM Seal

3104	Size mm	Thread
6801015012	15	1/2"
6801015034	15	3/4"
6801022012	22	1/2"
6801022034	22	3/4"
6801022100	22	1"
6801028034	28	3/4"
6801028100	28	1"
6801035114	35	1.1/4"
6801042112	42	1.1/2"
6801054200	54	2"



Female x Male Threaded, BSPP, EPDM Seal

3104	Size mm	Thread
6808015012	15	1/2"
6808022034	22	3/4"
6808028100	28	1"
6808035114	35	1.1/4"
6808042112	42	1.1/2"
6808054200	54	2"



Female x Female Threaded, BSPP, HNBR Gas Approved Seal



3104	Size mm	Thread
7902015012	15	1/2"
7902015034	15	3/4"
7902022012	22	1/2"
7902022034	22	3/4"
7902022100	22	1"
7902028034	28	3/4"
7902028100	28	1"
7902035114	35	1.1/4"
7902042112	42	1.1/2"
7902054200	54	2"



Female x Female Threaded, BSPP, HNBR Gas Approved Seal



3104	Size mm	Thread
7901015012	15	1/2"
7901015034	15	3/4"
7901022012	22	1/2"
7901022034	22	3/4"
7901028100	22	1"
7901035100	28	3/4"
7901035114	28	1"
7901042112	35	1.1/4"
7901054200	42	1.1/2"
7901066212	54	2"



Female x Male Threaded, BSPP, HNBR Gas Approved Seal



3104	Size mm	Thread
7908015012	15	1/2"
7908022034	22	3/4"
7908028100	28	1"
7908035114	35	1.1/4"
7908042112	42	1.1/2"
7908054200	54	2"



Female x Female Threaded, BSPP, FKM Seal

3104	Size mm	Thread
8802015012	15	1/2"
8802015034	15	3/4"
8802022012	22	1/2"
8802022034	22	3/4"
8802022100	22	1"
8802028034	28	3/4"
8802028100	28	1"
8802035114	35	1.1/4"
8802042112	42	1.1/2"
8802054200	54	2"



Female x Female Threaded, BSPP, FKM Seal

3104	Size mm	Thread
8801015012	15	1/2"
8801015034	15	3/4"
8801022012	22	1/2"
8801022034	22	3/4"
8801028100	22	1"
8801035100	28	3/4"
8801035114	28	1"
8801042112	35	1.1/4"
8801054200	42	1.1/2"
8801066212	54	2"



Female x Male Threaded, BSPP, FKM Seal

3104	Size mm	Thread
8808015012	15	1/2"
8808022034	22	3/4"
8808028100	28	1"
8808035114	35	1.1/4"
8808042112	42	1.1/2"
8808054200	54	2"

## Straight Couplings



**Female x Female,  
EPDM Seal**

3104	Size mm
680001515	15
680002222	22
680002828	28
680003535	35
680004242	42
680005454	54



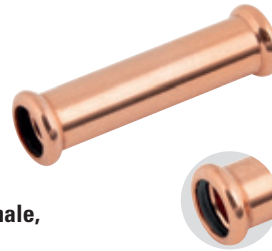
**Female x Female,  
HNBR Gas Approved Seal**

3104	Size mm
790001515	15
790002222	22
790002828	28
790003535	35
790004242	42
790005454	54

**Female x Male Plain End,  
FKM Seal**

3104	Size mm
880001515	15
880002222	22
880002828	28
880003535	35
880004242	42
880005454	54

## Slip Couplers



**Female x Female,  
EPDM Seal**

3104	Size mm
680401515	15
680402222	22
680402828	28
680403535	35
680404242	42
680405454	54



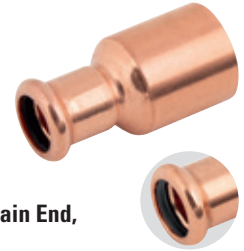
**Female x Female,  
HNBR Gas Approved Seal**

3104	Size mm
790001515	15
790002222	22
790002828	28
790003535	35
790004242	42
790005454	54

**Female x Male Plain End,  
FKM Seal**

3104	Size mm
880401515	15
880402222	22
880402828	28
880403535	35
880404242	42
880405454	54

## Socket Reducers



**Female x Male Plain End,  
EPDM Seal**

3104	Size mm	Size mm
684302215	22	15
684302815	28	15
684302822	28	22
684303522	35	22
684303528	35	28
684304222	42	22
684304228	42	28
684304235	42	35
684305435	54	35
684305442	54	42



**Female x Male Plain End,  
HNBR Gas Approved Seal**

3104	Size mm	Size mm
794302215	22	15
794302815	28	15
794302822	28	22
794303522	35	22
794303528	35	28
794304222	42	22
794304228	42	28
794304235	42	35
794305435	54	35
794305442	54	42

**Female x Male Plain End,  
FKM Seal**

3104	Size mm	Size mm
884302215	22	15
884302815	28	15
884302822	28	22
884303522	35	22
884303528	35	28
884304222	42	22
884304228	42	28
884304235	42	35
884305435	54	35
884305442	54	42

End Caps



Female x End Cap, EPDM Seal

3104	Size mm
6841015	15
6841022	22
6841028	28
6841035	35
6841042	42
6841054	54



Female x End Cap, HNBR Gas Approved Seal

3104	Size mm
7941015	15
7941022	22
7941028	28
7941035	35
7941042	42
7941054	54

Female x End Cap, FKM Seal

3104	Size mm
8841015	15
8841022	22
8841028	28
8841035	35
8841042	42
8841054	54

45° Elbows



Female x Female, EPDM Seal

3104	Size mm
682301515	15
682302222	22
682302828	28
682303535	35
682304242	42
682305454	54



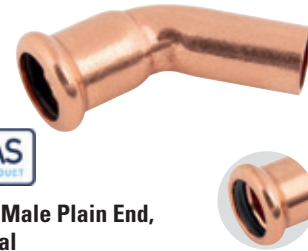
Female x Female, HNBR Gas Approved Seal

3104	Size mm
792301515	15
792302222	22
792302828	28
792303535	35
792304242	42
792305454	54

Female x Female, FKM Seal

3104	Size mm
882301515	15
882302222	22
882302828	28
882303535	35
882304242	42
882305454	54

45° Street Elbows



Female x Male Plain End, EPDM Seal

3104	Size mm
682401515	15
682402222	22
682402828	28
682403535	35
682404242	42
682405454	54



Female x Male Plain End, HNBR Gas Approved Seal

3104	Size mm
792401515	15
792402222	22
792402828	28
792403535	35
792404242	42
792405454	54

Female x Male Plain End, FKM Seal

3104	Size mm
882001515	15
882002222	22
882002828	28
882003535	35
882004242	42
882005454	54

EPDM Seals

Temperature: -30°C to +120°C

Pressure: PN16 16 bar



Description: Ethylene Propylene Diene Mnomer

HNBR Gas Approved Seals

Temperature: -20°C to +70°C

Pressure: PN5 5 bar



Description: Hydrogenated Nitrile Butadiene Rubber

FKM Seals

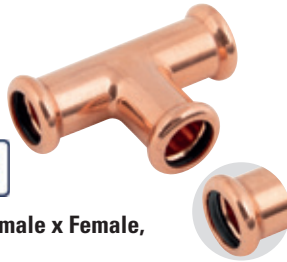
Temperature: -30°C to +180°C (+230°C for short periods)

Pressure: PN16 16 bar



Description: Viton Fluoroelastomer

## Equal Tees



**Female x Female x Female,  
EPDM Seal**

3104	Size mm
68100151515	15
68100222222	22
68100282828	28
68100353535	35
68100424242	42
68100545454	54

## Reducing Tees



**Female x Female x Female,  
EPDM Seal**

3104	Size mm	Size mm	Size mm
68110221522	22	15	22
68110282228	28	22	28
68110352235	35	22	35
68110352835	35	28	35
68110422242	42	22	42
68110422842	42	28	42
68110423542	42	35	42
68110542254	54	22	54
68110542854	54	28	54
68110543554	54	35	54
68110544254	54	42	54



**Female x Female Threaded,  
BSPP x Female, EPDM Seal**

3104	Size mm	Thread	Size mm
68120151215	15	1/2"	15
68120221222	22	1/2"	22
68120223422	22	3/4"	22
68120281228	28	1/2"	28
68120283428	28	3/4"	28
68120351235	35	1/2"	35
68120421242	42	1/2"	42
68120541254	54	1/2"	54



**Female x Female x Female,  
HNBR Gas Approved Seal**

3104	Size mm
79100151515	15
79100222222	22
79100282828	28
79100353535	35
79100424242	42
79100545454	54



**Female x Female x Female,  
HNBR Gas Approved Seal**

3104	Size mm	Size mm	Size mm
79110221522	22	15	22
79110282228	28	22	28
79110352235	35	22	35
79110352835	35	28	35
79110422842	42	22	42
79110422842	42	28	42
79110423542	42	35	42
79110542254	54	22	54
79110542854	54	28	54
79110543554	54	35	54
79110544254	54	42	54



**Female x Female Threaded,  
BSPP x Female, HNBR Gas Approved Seal**

3104	Size mm	Thread	Size mm
79120151215	15	1/2"	15
79120221222	22	1/2"	22
79120223422	22	3/4"	22
79120281228	28	1/2"	28
79120283428	28	3/4"	28
79120351235	35	1/2"	35
79120421242	42	1/2"	42
79120541254	54	1/2"	54

**Female x Female x Female,  
FKM Seal**

3104	Size mm
88100151515	15
88100222222	22
88100282828	28
88100353535	35
88100424242	42
88100545454	54

**Female x Female x Female,  
FKM Seal**

3104	Size mm	Size mm	Size mm
88110221522	22	15	22
88110282228	28	22	28
88110352235	35	22	35
88110352835	35	28	35
88110422242	42	22	42
88110422842	42	28	42
88110423542	42	35	42
88110542254	54	22	54
88110542854	54	28	54
88110543554	54	35	54
88110544254	54	42	54

**Female x Female Threaded,  
BSPP x Female, FKM Seal**

3104	Size mm	Thread	Size mm
88120151215	15	1/2"	15
88120221222	22	1/2"	22
88120223422	22	3/4"	22
88120281228	28	1/2"	28
88120283428	28	3/4"	28
88120351235	35	1/2"	35
88120421242	42	1/2"	42
88120541254	54	1/2"	54



90° Elbows



Female x Female, EPDM Seal

3104	Size mm
682001515	15
682002222	22
682002828	28
682003535	35
682004242	42
682005454	54



Female x Female, HNBR Gas Approved Seal

3104	Size mm
882001515	15
882002222	22
882002828	28
882003535	35
882004242	42
882005454	54

Female x Female, FKM Seal

3104	Size mm
882301515	15
882302222	22
882302828	28
882303535	35
882304242	42
882305454	54

90° Bends



Female x Female Threaded, BSPP, EPDM Seal

3104	Size mm	Thread
6832015012	15	1/2"
6832022034	15	3/8"
6832028100	22	3/4"



Female x Female Threaded, BSPP, HNBR Gas Approved Seal

3104	Size mm	Thread
7932015012	15	1/2"
7932022034	15	3/8"
7932028100	22	3/4"

Female x Female Threaded, BSPP, FKM Seal

3104	Size mm	Thread
8832015012	15	1/2"
8832022034	15	3/8"
8832028100	22	3/4"



Female x Male Threaded, BSPP, EPDM Seal

3104	Size mm	Thread
6831015012	15	1/2"
6831022034	22	3/4"
6831028100	28	1"



Female x Male Threaded, BSPP, HNBR Gas Approved Seal

3104	Size mm	Thread
7931015012	15	1/2"
7931022034	22	3/4"
7931028100	28	1"

Female x Male Threaded, BSPP, FKM Seal

3104	Size mm	Thread
8831015012	15	1/2"
8831022034	22	3/4"
8831028100	28	1"

EPDM Seals

Temperature: -30°C to +120°C

Pressure: PN16 16 bar



Description: Ethylene Propylene Diene Mnomer

HNBR Gas Approved Seals

Temperature: -20°C to +70°C

Pressure: PN5 5 bar



Description: Hydrogenated Nitrile Butadiene Rubber

FKM Seals

Temperature: -30°C to +180°C (+230°C for short periods)

Pressure: PN16 16 bar



Description: Viton Fluoroelastomer

## 90° Street Elbows



**Female x Male Plain End,  
EPDM Seal**



3104	Size mm
682101515	15
682102222	22
682102828	28
682103535	35
682104242	42
682105454	54



**Female x Male Plain End,  
HNBR Gas Approved Seal**



3104	Size mm
792101515	15
792102222	22
792102828	28
792103535	35
792104242	42
792105454	54

**Female x Male Plain End,  
FKM Seal**



3104	Size mm
882001515	15
882002222	22
882002828	28
882003535	35
882004242	42
882005454	54



## Brass Press Fit Ball Valves



**Working Temperature:**  
-10°C to +120°C

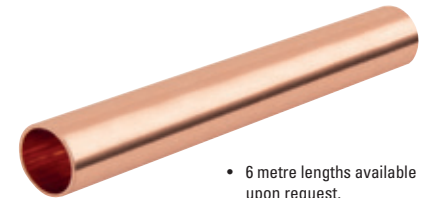
**Maximum Working Pressure:**  
16 bar



**Female x Female, EPDM Seal**

3105	Size mm
GP60015PP	15
GP60022PP	22
GP60028PP	28
GP60035PP	35
GP60042PP	42
GP60054PP	54

## Plumbing Copper Tube



- 6 metre lengths available upon request.

### BS EN1057 R250, 3 Metre Lengths

5072	OD mm	ID mm	Max Pressure PSI	Max Pressure Bar
PCU15	15	13.6	843	59
PCU22	22	20.2	752	51
PCU28	28	26.2	582	40
PCU35	35	32.6	618	43
PCU42	42	39.6	512	35
PCU54	54	51.6	396	27
PCU67	67	64.6	317	22

# RIDGID

You might also need...  
**RIDGID PC 116 Powered Tubing Cutter**  
 ...see page 1743



# NIROSAN® STAINLESS STEEL PRESS FIT PIPING SYSTEM

stainless steel

**SANHA**



NiroSan® press system fittings and NiroSa® system pipes in stainless steel with tool compatibility, leak path feature and 'push and stay' function.

Stainless steel systems from SANHA® can be used universally. The various NiroSan® pipes and NiroSan® press system fittings can be combined with each other, making them particularly user friendly.

## Features

- Pressable with V, M and SA profile
- Suitable for a very broad range of applications
- Long service life of fittings and EPDM sealing ring
- Inseparable, pressure-formed connection
- WRAS tested and certified
- All fittings and tube are manufactured from 316 L grade stainless steel

**Working Temperature:**  
-30°C to +120°C

**Maximum Working Pressures:**  
**Water:** 22mm: 40 bar, 28-35mm: 25 bar, 42-54mm: 16 bar  
**Flammable Gases:** 5 bar  
**Non-flammable/oxic Gases:** 16 bar

Press fittings suitable for both gas and industrial oil applications are available on request

## Series 9000, Straights

### Female x Male Plain End, Reducer



0473	ID mm	OD mm
692432215	22	15
692432815	28	15
692432822	28	22
692433522	35	22
692433528	35	28
692434228	42	28
692434235	42	35
692435428	54	28
692435435	54	35
692435442	54	42

Tech Sheet 60369

### Female x Male Threaded, BSPT



0473	ID mm	Thread
69243G1512	15	1/2"
69243G1534	15	3/4"
69243G221	22	1"
69243G2212	22	1/2"
69243G2234	22	3/4"
69243G281	28	1"
69243G2834	28	3/4"
69243G351	35	1"
69243G35114	35	1.1/4"
69243G42112	42	1.1/2"
69243G542	54	2"

Tech Sheet 60369

### Male Plain End x Female Threaded, BSPT



0473	ID mm	Thread
69246G1512	15	1/2"
69246G2212	22	1/2"
69246G2234	22	3/4"
69246G2834	28	3/4"

Tech Sheet 60369

### Male Plain End x Male Threaded, BSPT



0473	OD mm	Thread
69280G1512	15	1/2"
69280G2212	22	1/2"
69280G2234	22	3/4"
69280G281	28	1"

Tech Sheet 60369

### Coupling



0473	ID mm
6927015	15
6927022	22
6927028	28
6927035	35
6927042	42
6927054	54

Tech Sheet 60369

### Slip Coupling



0473	ID mm
69270S15	15
69270S22	22
69270S28	28
69270S35	35
69270S42	42
69270S54	54

Tech Sheet 60369

### Female End x Female Threaded, BSPT



0473	ID mm	Thread
69270G1512	15	1/2"
69270G2212	22	1/2"
69270G2234	22	3/4"
69270G281	28	1"
69270G2834	28	3/4"
69270G35114	35	1.1/4"
69270G42112	42	1.1/2"
69270G542	54	2"

Tech Sheet 60369

### Female End x Female Threaded, with Flat Centellen Seal, BSPP



0473	ID mm	Thread
69359M1512	15	1/2"
69359M1534	25	3/4"
69359M221	22	1"
69359M28114	28	1.1/4"
69359M35112	35	1.1/2"
69359M42134	42	1.3/4"

Tech Sheet 60369

## Series 9000, End Caps



### Female

0473	ID mm
6930115	15
6930122	22
6930128	28
6930135	35

Tech Sheet 60369

## Series 9000, Tube



### 6 Metre Lengths

0473	ID mm
6960015	15
6960022	22
6960028	28
6960035	35
6960042	42
6960054	54

Tech Sheet 60369

# NIROSAN® STAINLESS STEEL PRESS FIT PIPING SYSTEM

stainless  
steel

**SANHA**®



## Series 9000, Tees



### Equal

0473	ID mm
6913015	15
6913022	22
6913028	28
6913035	35
6913042	42
6913054	54

Tech Sheet 60369



### Reducing

0473	ID mm	ID mm
69130221522	22	15
69130281528	28	15
69130352235	35	22
69130352835	35	28
69130422242	42	22
69130422842	42	28
69130423542	42	35
69130542254	54	22
69130542854	54	28
69130543554	54	35
69130544254	54	42

Tech Sheet 60369



### Female Threaded Centre Leg, BSPT

0473	ID mm	Thread
69130G151215	15	1/2"
69130G221222	22	1/2"
69130G223422	22	3/4"
69130G281228	28	1/2"
69130G283428	28	3/4"
69130G351235	35	1/2"
69130G353435	35	3/4"
69130G421242	42	1/2"
69130G541254	54	1/2"

Tech Sheet 60369

Press fittings suitable for both gas and industrial oil applications are available on request.

## Series 9000, 90° Elbows



### Female x Male Plain End

0473	ID mm	OD mm
69001A15	15	15
69001A22	22	22
69001A28	28	28
69001A35	35	35
69001A42	42	42
69001A54	54	54

Tech Sheet 60369



### Female x Male Plain End, Long

0473	ID mm	OD mm
69001L15	15	15
69001L22	22	22
69001L28	28	28
69001L35	35	35
69001L42	42	42
69001L54	54	54

Tech Sheet 60369



### Equal Female

0473	ID mm
69002A15	15
69002A22	22
69002A28	28
69002A35	35
69002A42	42
69002A54	54

Tech Sheet 60369

## Series 9000, 45° Elbows



### Female x Male Plain End

0473	ID mm	OD mm
6904015	15	15
6904022	22	22
6904028	28	28
6904035	35	35
6904042	42	42
6904054	54	54

Tech Sheet 60369



### Female x Male Thread, BSPT

0473	ID mm	Thread
69002AG1512	15	1/2"
69002AG2234	22	3/4"

Tech Sheet 60369



### Female x Female Thread, BSPT

0473	ID mm	Thread
69002G1512	15	1/2"
69002G2234	22	3/4"

Tech Sheet 60369



### Compact, Female x Female Thread, BSPT

0473	ID mm	Thread
69090IG1512	15	1/2"
69090IG2234	22	3/4"

Tech Sheet 60369



### Compact, Female x Male Thread, BSPT

0473	ID mm	Thread
69092AG1512	15	1/2"
69092AG2234	22	3/4"
69092AG281	28	1"

Tech Sheet 60369



### Female x Female

0473	ID mm
6904115	15
6904122	22
6904128	28
6904135	35
6904142	42
6904154	54

Tech Sheet 60369