

**1** Hydraulics **3-284**

**2** Hydraulic Quick Release Couplings **285-320**

**3** Pneumatic Quick Release Couplings **321-406**

**4** Monitor & Test **407-446**

**5** Pneumatic & Vacuum **447-762**

**6** Push-in Fittings & Tubing **763-918**

**7** Valves & Actuation **919-1060**

**8** Ring Main **1061-1136**

**9** Hose Tails, Adaptors, Fittings & Manifolds **1137-1224**

**10** Stainless Steel **1225-1332**

**11** Malleable Iron **1333-1398**

**12** Hose, Couplings, Ducting & Hose Reels **1399-1510**

**13** Clips & Clamps **1511-1558**

**14** Paint, Sprays & Adhesives **1559-1590**

**15** Blow Guns, Vacuum & Nozzles **1591-1616**

**16** Fuelling, Lubrication, Wash Down & Misting **1617-1696**

**17** Compressors & Air Tools **1697-1726**

**18** Hand Tools & PPE **1727-1765**

# SECTION 2

2

## Hydraulic Quick Release Couplings

---

2 Hydraulic Quick Release Couplings

---

## 2.00 Hydraulic QRCs

- ISO A Interchange Couplings & Plugs
- ISO B Interchange Couplings & Plugs
- ISO 5676 Trailer Brake Couplings & Plugs
- ISO 16028 Flat Face Couplings
- T Series Hydraulic Quick Release Coupling
- Screw-on Couplings
- High Pressure Spin-on Couplings
- Stainless Steel Couplings & Plugs
- Push/Pull Breakaway Steel Couplings
- Coupling & Plug Colour Rings
- Screw to Connect Couplings & Plugs
- Ultra High Pressure Couplings
- ISO 14540 Screw Couplings
- Wing Nut Screw Couplings
- TDG Swivel Joints
- Brass Couplings & Plugs
- Thread to Connect Couplings

FT PRO

Parker

dnp

Snap-tite

287-320



# PROFILE IDENTIFICATION

## ISO A Interchange Plugs



HKPA16CS, FT Pro, ISO A Plugs Page 290



HKPA12CS, FT Pro, ISO A Plugs Page 290



HKPA08CS, FT Pro, ISO A Plugs Page 290

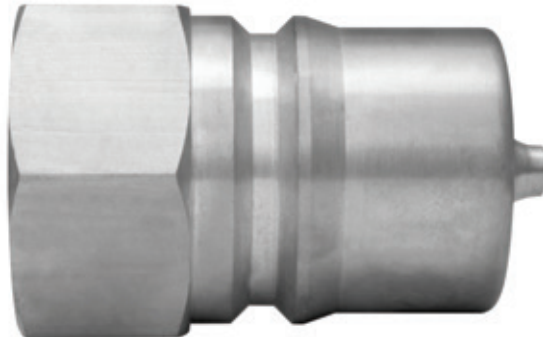


HKPA06CS, FT Pro, ISO A Plugs Page 290

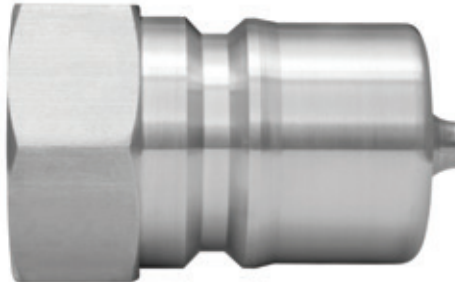


HKPA06CS, FT Pro, ISO A Plugs Page 290

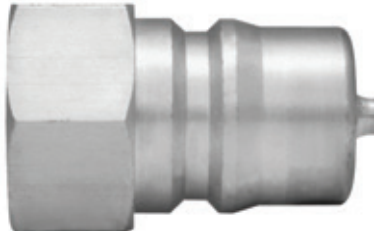
## ISO B Interchange Plugs



HKP16B, FT Pro, ISO B Plugs Page 291



HKP12B, FT Pro, ISO B Plugs Page 291



HKP08B, FT Pro, ISO B Plugs Page 291



HKP06B, FT Pro, ISO B Plugs Page 291



HKP04B, FT Pro, ISO B Plugs Page 291



HKP02B, FT Pro, ISO B Plugs Page 291

# PROFILE IDENTIFICATION

## ISO 16028 Interchange, Flat Face

---



HKPFF16CS, FT Pro, ISO 16028 Flat Face Plug Page 292



HKPFF12CS, FT Pro, ISO 16028 Flat Face Plug Page 292



HKPFF08CS, FT Pro, ISO 16028 Flat Face Plug Page 292



HKPFF06CS, FT Pro, ISO 16028 Flat Face Plug Page 292



HKPFF04CS, FT Pro, ISO 16028 Flat Face Plug Page 292

**Note:** Due to the change in finished used by our suppliers. the product you receive may differ from that illustrated

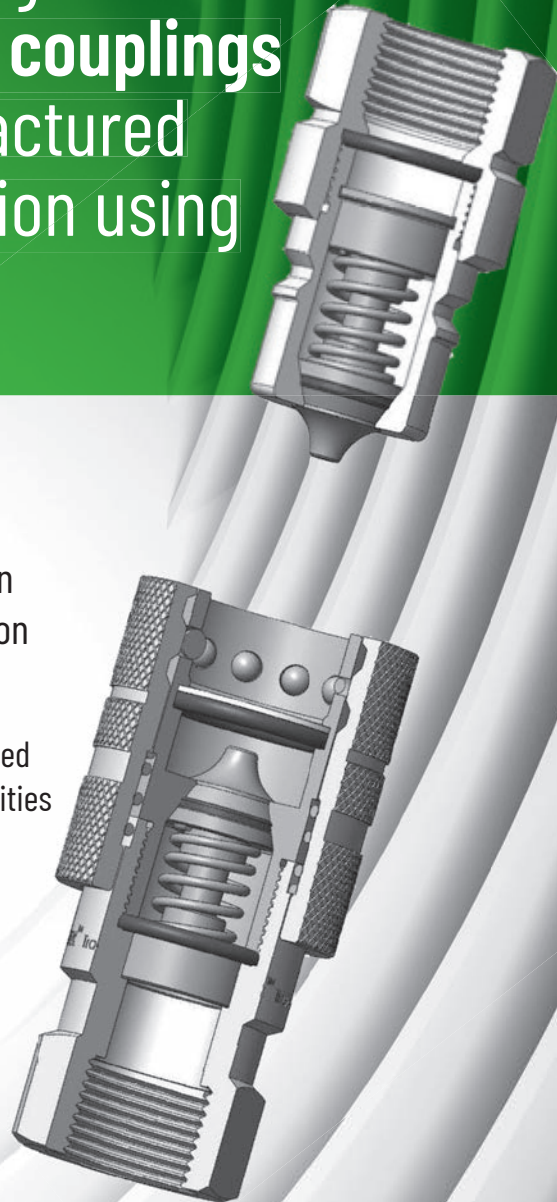
**FT PRO** has a quality range of **hydraulic quick release couplings** which have been manufactured to the highest specification using quality materials.

The range consists of interchange couplings designed to meet or exceed ISO A, ISO B, Flat Faced ISO 16028, Trailer Brake ISO 5676, Spin on High Pressure 88, 97 and 98 Series, in a variation of coated steel, stainless steel and brass.

FT Pro quick release couplings are tried, tested and used extensively throughout the world's manufacturing facilities and in the mobile plant industry.

**Applications:**

- Hydraulics
- Offshore
- Construction
- Marine
- Agriculture
- High pressure water applications
- Mining
- OEM machine building




**NOW INCLUDES VITON SEALING OPTIONS FOR MORE AGGRESSIVE MEDIA**

## ISO A INTERCHANGE COUPLINGS &amp; PLUGS



## ISO A Interchange

 Working Temperature:  
 -25°C to +120°C Nitrile  
 -25°C to +175°C Viton



## Carbon Steel ISO A Coupling with Nitrile Seals, BSPP

8111	Thread	Max Pressure Bar
HKSA04CS	1/4"	350
HKSA06CS	3/8"	315
HKSA08CS	1/2"	250
HKSA12CS	3/4"	250
HKSA16CS	1"	230
HKSA20CS	1.1/4"	230
HKSA24CS	1.1/2"	180
HKSA32CS	2"	130

Tech Sheet 10002

## Carbon Steel ISO A Coupling with Nitrile Seals, NPT

8111	Thread	Max Pressure Bar
HKSA04CS-NPT	1/4"	350
HKSA06CS-NPT	3/8"	315
HKSA08CS-NPT	1/2"	250
HKSA12CS-NPT	3/4"	250
HKSA16CS-NPT	1"	230
HKSA24CS-NPT	1.1/2"	180
HKSA32CS-NPT	2"	130

Tech Sheet 10002

## Carbon Steel ISO A Coupling with Viton Seals, BSPP

8111	Thread	Max Pressure Bar
HKSA04CS-V	1/4"	350
HKSA06CS-V	3/8"	315
HKSA08CS-V	1/2"	250
HKSA12CS-V	3/4"	250
HKSA16CS-V	1"	230
HKSA20CS-V	1.1/4"	230
HKSA24CS-V	1.1/2"	180
HKSA32CS-V	2"	130

Tech Sheet 10002



## ISO A Coupling Dust Protection Cap

8111	To Suit
ISOADC-4	1/4"
ISOADC-6	3/8"
ISOADC-8	1/2"
ISOADC-12	3/4"
ISOADC-16	1"

Tech Sheet 10002



## Carbon Steel ISO A Plug with Nitrile Seals, BSPP

8111	Thread	Max Pressure Bar
HKPA04CS	1/4"	350
HKPA06CS	3/8"	315
HKPA08CS	1/2"	250
HKPA12CS	3/4"	250
HKPA16CS	1"	230
HKPA20CS	1.1/4"	230
HKPA24CS	1.1/2"	180
HKPA32CS	2"	130

Tech Sheet 10002

## Carbon Steel ISO A Plug with Nitrile Seals, NPT

8111	Thread	Max Pressure Bar
HKPA04CS-NPT	1/4"	350
HKPA06CS-NPT	3/8"	315
HKPA08CS-NPT	1/2"	250
HKPA12CS-NPT	3/4"	250
HKPA16CS-NPT	1"	230
HKPA20CS-NPT	1.1/4"	230
HKPA24CS-NPT	1.1/2"	180
HKPA32CS-NPT	2"	130

Tech Sheet 10002

## Carbon Steel ISO A Plug with Viton Seals, BSPP

8111	Thread	Max Pressure Bar
HKPA04CS-V	1/4"	350
HKPA06CS-V	3/8"	315
HKPA08CS-V	1/2"	250
HKPA12CS-V	3/4"	250
HKPA16CS-V	1"	230
HKPA20CS-V	1.1/4"	230
HKPA24CS-V	1.1/2"	180
HKPA32CS-V	2"	130

Tech Sheet 10002



## ISO A Plug Dust Protection Plug

8111	To Suit
ISOADP-4	1/4"
ISOADP-6	3/8"
ISOADP-8	1/2"
ISOADP-12	3/4"
ISOADP-16	1"

Tech Sheet 10002

 stainless steel



## 316 Stainless Steel ISO A Coupling with Viton Seals, BSPP

8111	Thread	Max Pressure Bar
HFSSFC7314-V	1/4"	250
HFSSFC7338-V	3/8"	200
HFSSFC7312-V	1/2"	200
HFSSFC7334-V	3/4"	160
HFSSFC7310-V	1"	125

Tech Sheet 10002

## 316 Stainless Steel ISO A Coupling with Nitrile Seals, NPT

8111	Thread	Max Pressure Bar
HKSA04SS-NPT	1/4"	250
HKSA06SS-NPT	3/8"	200
HKSA08SS-NPT	1/2"	200
HKSA12SS-NPT	3/4"	160
HKSA16SS-NPT	1"	125

Tech Sheet 10002

 stainless steel



## 316 Stainless Steel ISO A Plug with Viton Seals, BSPP

8111	Thread	Max Pressure Bar
HFSSFP7314-V	1/4"	250
HFSSFP7338-V	3/8"	200
HFSSFP7312-V	1/2"	200
HFSSFP7334-V	3/4"	160
HFSSFP7310-V	1"	125

Tech Sheet 10002

## 316 Stainless Steel ISO A Plug with Nitrile Seals, NPT

8111	Thread	Max Pressure Bar
HKPA04SS-NPT	1/4"	250
HKPA06SS-NPT	3/8"	200
HKPA08SS-NPT	1/2"	200
HKPA12SS-NPT	3/4"	160
HKPA16SS-NPT	1"	125

Tech Sheet 10002

## ISO B Interchange

° Working Temperature:  
 -25°C to +120°C Nitrile  
 -25°C to +175°C Viton



### Carbon Steel ISO B Coupling with Nitrile Seal, BSPP

0249	Thread	Max Pressure Bar
HKS04CS	1/4"	350
HKS06CS	3/8"	315
HKS08CS	1/2"	250
HKS12CS	3/4"	230
HKS16CS	1"	200

Tech Sheet 10003

### Carbon Steel ISO B Coupling with Nitrile Seal, NPT

8111	Thread	Max Pressure Bar
HKS02CS-NPT	1/8"	350
HKS04CS-NPT	1/4"	350
HKS06CS-NPT	3/8"	315
HKS08CS-NPT	1/2"	250
HKS12CS-NPT	3/4"	250
HKS16CS-NPT	1"	230

Tech Sheet 10003

### Carbon Steel ISO B Plug with Nitrile Seal, BSPP



0249	Thread	Max Pressure Bar
HKP04CS	1/4"	350
HKP06CS	3/8"	315
HKP08CS	1/2"	250
HKP12CS	3/4"	230
HKP16CS	1"	200

Tech Sheet 10003

### Carbon Steel ISO B Plug with Nitrile Seal, NPT

8111	Thread	Max Pressure Bar
HKP04CS-NPT	1/4"	350
HKP06CS-NPT	3/8"	315
HKP08CS-NPT	1/2"	250
HKP12CS-NPT	3/4"	250
HKP16CS-NPT	1"	230

Tech Sheet 10003

### ISO B Plug & Coupling Dust Protection Cap



8111	To Suit
ISOBDP-4	1/4"
ISOBDP-6	3/8"
ISOBDP-8	1/2"
ISOBDP-12	3/4"
ISOBDP-16	1"

Tech Sheet 10003

### stainless steel



### 316 Stainless Steel ISO B Coupling with Nitrile Seal, BSPP

0249	Thread	Max Pressure Bar
HKS02SS	1/8"	250
HKS04SS	1/4"	250
HKS06SS	3/8"	200
HKS08SS	1/2"	200
HKS12SS	3/4"	160
HKS16SS	1"	125

Tech Sheet 10003

### 316 Stainless Steel ISO B Coupling with Nitrile Seal, NPT

8111	Thread	Max Pressure Bar
HKS04SS-NPT	1/4"	250
HKS06SS-NPT	3/8"	200
HKS08SS-NPT	1/2"	200
HKS12SS-NPT	3/4"	160
HKS16SS-NPT	1"	125

Tech Sheet 10003

### 316 Stainless Steel ISO B Coupling with Viton Seal, BSPP

0249	Thread	Max Pressure Bar
HKS02SS-V	1/8"	250
HKS04SS-V	1/4"	250
HKS06SS-V	3/8"	200
HKS08SS-V	1/2"	200
HKS12SS-V	3/4"	160
HKS16SS-V	1"	125

Tech Sheet 10003

### Brass ISO B Coupling with Nitrile Seal, BSPP



0249	Thread	Max Pressure Bar
HKS02B	1/8"	200
HKS04B	1/4"	180
HKS06B	3/8"	180
HKS08B	1/2"	160
HKS12B	3/4"	120
HKS16B	1"	120

Tech Sheet 10003

### Brass ISO B Coupling with Viton Seals, BSPP

0249	Thread	Max Pressure Bar
HKS02B-V	1/8"	200
HKS04B-V	1/4"	180
HKS06B-V	3/8"	180
HKS08B-V	1/2"	160
HKS12B-V	3/4"	120
HKS16B-V	1"	120

Tech Sheet 10003

## Other seals available on request

### stainless steel



### 316 Stainless Steel ISO B Plug with Nitrile Seal, BSPP

0249	Thread	Max Pressure Bar
HKP02SS	1/8"	250
HKP04SS	1/4"	250
HKP06SS	3/8"	200
HKP08SS	1/2"	200
HKP12SS	3/4"	160
HKP16SS	1"	125

Tech Sheet 10003

### 316 Stainless Steel ISO B Plug with Nitrile Seal, NPT

8111	Thread	Max Pressure Bar
HKP04SS-NPT	1/4"	250
HKP06SS-NPT	3/8"	200
HKP08SS-NPT	1/2"	200
HKP12SS-NPT	3/4"	160
HKP16SS-NPT	1"	125

Tech Sheet 10003

### 316 Stainless Steel ISO B Plug with Viton Seal, BSPP

0249	Thread	Max Pressure Bar
HKP02SS-V	1/8"	250
HKP04SS-V	1/4"	250
HKP06SS-V	3/8"	200
HKP08SS-V	1/2"	200
HKP12SS-V	3/4"	160
HKP16SS-V	1"	125

Tech Sheet 10003

### Brass ISO B Plug with Nitrile Seal, BSPP



0249	Thread	Max Pressure Bar
HKP02B	1/8"	200
HKP04B	1/4"	180
HKP06B	3/8"	180
HKP08B	1/2"	160
HKP12B	3/4"	120
HKP16B	1"	120

Tech Sheet 10003

### Brass ISO B Plug with Viton Seals, BSPP

0249	Thread	Max Pressure Bar
HKP02B-V	1/8"	200
HKP04B-V	1/4"	180
HKP06B-V	3/8"	180
HKP08B-V	1/2"	160
HKP12B-V	3/4"	120
HKP16B-V	1"	120

Tech Sheet 10003

# ISO 5676 TRAILER BRAKE, INTERCHANGE COUPLINGS & PLUGS



## High Pressure Screw-on Coupling (Carbon Steel), 65 Series, ISO 5676

**Working Temperature:**  
-25°C to +120°C Nitrile

**Maximum Working Pressure:**  
220 bar

Used to connect the hydraulic braking system of tractors to their trailers.

### Socket with Nitrile Seals, BSPP & Metric

8111	Thread
HFSFC6538	3/8"
HFSFC6512	1/2"
HFSFC6518	M18 x 1.5
HFSFC6522	M22 x 1.5

Tech Sheet 2126



### Plug with Nitrile Seals, BSPP & Metric

8111	Thread
HFSFP6538	3/8"
HFSFP6512	1/2"
HFSFP6518	M18 x 1.5
HFSFP6522	M22 x 1.5

Tech Sheet 2126



# ISO 16028 INTERCHANGE, FLAT FACE COUPLINGS



## ISO 16028 Interchange

**Working Temperature:**  
-25°C to +120°C Nitrile

Designed to meet or exceed the requirements of ISO 16028. Flush face and dry break design facilitates easy cleaning prior to connection. Manufactured from high strength steel construction.

Other seals available on request

### Steel Flat Face Coupling with Nitrile Seals, BSPP

8111	Thread	Body	Max Pressure Bar
HKSFF04CS	1/4"	1/4"	315
HKSFF06CS	3/8"	3/8"	250
HKSFF0608CS	1/2"	3/8"	250
HKSFF08CS	1/2"	1/2"	250
HKSFF12CS	3/4"	1/2"	250
HKSFF1212CS	3/4"	3/4"	250
HKSFF16CS	1"	3/4"	250
HKSFF1616CS	1"	1"	200
HKSFF2016CS	1.1/4"	1"	200

Tech Sheet 10233



### Steel Flat Face Plug with Nitrile Seals, BSPP

8111	Thread	Body	Max Pressure Bar
HKPFF04CS	1/4"	1/4"	315
HKPFF06CS	3/8"	3/8"	250
HKPFF0608CS	1/2"	3/8"	250
HKPFF08CS	1/2"	1/2"	250
HKPFF12CS	3/4"	1/2"	250
HKPFF1212CS	3/4"	3/4"	250
HKPFF16CS	1"	3/4"	250
HKPFF1616CS	1"	1"	200
HKPFF2016CS	1.1/4"	1"	200

Tech Sheet 10233



### Dust Protection Cap, Plug

8111	To Suit
FFDP-04	1/4"
FFDP-06	3/8"
FFDP-08	1/2"
FFDP-12	3/4"
FFDP-16	1"

Tech Sheet 10233



### Dust Protection Cap, Coupling

8111	To Suit
FFDC-04	1/4"
FFDC-06	3/8"
FFDC-08	1/2"
FFDC-12	3/4"
FFDC-16	1"

Tech Sheet 10233





## ISO 16028, High Pressure Series

**° Working Temperature:**  
-25°C to +120°C Nitrile

HP Series offers higher pressure ratings, superior flow ratings and lower pressure drops compared to our standard series. The change in the design increases the male bearing points and decreases the brinelling effect. The couplings are ideal for applications involving high pressure impulses on agriculture, mobile construction and plant equipment.

Other seals available on request.

### Steel Flat Face Couplings with Nitrile Seals, BSPP

8111	Thread	Body	Max Pressure Bar
HPSFF04CS	1/4"	1/4"	420
HPSFF06CS	3/8"	3/8"	350
HPSFF0608CS	1/2"	3/8"	350
HPSFF08CS	1/2"	1/2"	330
HPSFF12CS	3/4"	1/2"	330
HPSFF01212CS	3/4"	3/4"	330
HPSFF16CS	1"	3/4"	330
HPSFF1616CS	1"	1"	300
HPSFF2016CS	1.1/4"	1"	300

Tech Sheet 10277



### Steel Flat Face Plug with Nitrile Seals, BSPP

8111	Thread	Body	Max Pressure Bar
HPPFF04CS	1/4"	1/4"	420
HPPFF06CS	3/8"	3/8"	350
HPPFF0608CS	1/2"	3/8"	350
HPPFF08CS	1/2"	1/2"	330
HPPFF12CS	3/4"	1/2"	330
HPPFF01212CS	3/4"	3/4"	330
HPPFF16CS	1"	3/4"	330
HPPFF1616CS	1"	1"	300
HPPFF2016CS	1.1/4"	1"	300

Tech Sheet 10277



# T SERIES HYDRAULIC QUICK RELEASE COUPLING

## Manual Locking Coupling with Pressure Eliminator

**° Working Temperature:**  
-25°C to +120°C Nitrile  
-25°C to +175°C Viton

The T Series coupling is designed for high pressure systems. A manually operated locking ring provides extra security against unintentional disconnection. All come complete with poppet valves and pressure eliminator.

Other seals available on request.

**Interchangeability:** Parker Tema

### Steel Coupling, Nitrile Seals, BSPP

0385	Thread	Max Pressure Bar
TSC06CS	3/8"	350
TSC08CS	1/2"	300
TSC12CS	3/4"	280
TSC16CS	1"	250

Tech Sheet 10278



### Steel Plug, Nitrile Seals, BSPP

0385	Thread	Max Pressure Bar
TSP06CS	3/8"	350
TSP08CS	1/2"	300
TSP12CS	3/4"	280
TSP16CS	1"	250

Tech Sheet 10278



### Steel Coupling, Viton Seals, BSPP

0385	Thread	Max Pressure Bar
TSC06CS-V	3/8"	350
TSC08CS-V	1/2"	300
TSC12CS-V	3/4"	280
TSC16CS-V	1"	250

Tech Sheet 10278

### Steel Plug, Viton Seals, BSPP

0385	Thread	Max Pressure Bar
TSP06CS-V	3/8"	350
TSP08CS-V	1/2"	300
TSP12CS-V	3/4"	280
TSP16CS-V	1"	250

Tech Sheet 10278

# HYDRAULIC COUPLINGS



## Screw-on Couplings, 98 Series

**Working Temperature:**  
-25°C to +120°C

Ideal for hydraulic dump trucks, oil field equipment, spreading equipment and applications requiring the ability to connect or disconnect under pressure.  
**With Standard Seals:** Nitrile

**Only plug and socket with same thread fit together.**



Brass Body/Zinc Plated Steel Wing Nut.



### Coupling, NPTF

8111	Thread	Max Pressure Bar
HFBFP9834	3/4"	210
HFBFP9810	1"	210
HFBFP98114	1.1/4"	190
HFBFP98112	1.1/2"	175

Tech Sheet 2128

### Plug, NPTF

8111	Thread	Max Pressure Bar
HFBFC9834	3/4"	210
HFBFC9810	1"	210
HFBFC98114	1.1/4"	190
HFBFC98112	1.1/2"	175

Tech Sheet 2128

# HIGH PRESSURE SPIN-ON COUPLINGS (CARBON STEEL)



## 88 Series

**Working Temperature:**  
-25°C to +120°C

**Maximum Working Pressure:**  
700 bar

This series of couplings with their threaded union locking system and precision ball-type check valves, are designed for extreme high pressure applications such as found on portable hydraulic rams.

**Interchangeability:**  
Hansen HP3 Series  
Parker 3000 Series  
Faster PVVM Series

DNP PVS Series  
Stucchi IVHP Series  
Safeway S30 Series



### Coupling with Nitrile Seals, NPTF

8111	Thread
HFSFC8814	1/4"
HFSFC8838	3/8"

Tech Sheet 10005



### 88 Series Aluminium Dust Covers

8111	To Suit
HFSFC-14-DP	1/4"
HFSFC-38-DP	3/8"
HFSFP-14-DC	1/4"
HFSFP-38-DC	3/8"

Tech Sheet 10005



### Plug with Nitrile Seals, NPTF

8111	Thread
HFSFP8814	1/4"
HFSFP8838	3/8"

Tech Sheet 10005

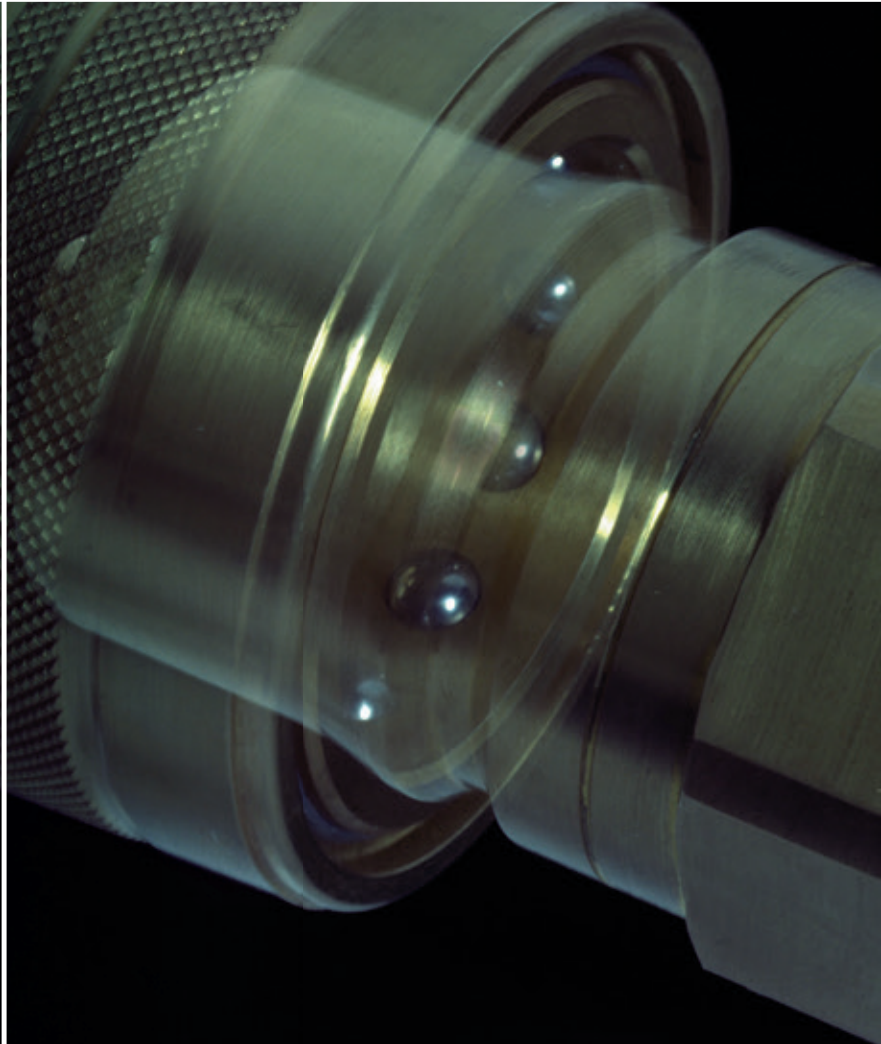


# The leader in coupling innovation

- DNP combine sophisticated complex technology, highly skilled and experienced operators, tight production and assembly controls, and systematic vigorous testing in order to produce a vast range of superior couplings.
- Quality assurance ISO 9002.
- Interchangeable couplings with other major manufacturers.
- The range consists of over 60 varieties of couplings, including ISO A, ISO B, flat face, screw/ISO 14541 and push-pull, with working pressures up to 1500 bar.
- The range also includes multi-coupling plates which allow simultaneous coupling and uncoupling of a certain number of hydraulic and or electrical lines.



- Selected ranges (flat face – PVT4 BOP, PVTX BOP, PST4 BOP and ISO B – PBV1 BOP) come with Lloyds registered approval. The range is specially designed for blow-out preventer accumulator systems in the oil and gas market.



FULL RANGE  
AVAILABLE

Tech Sheet 20574



To see the latest certification consult Tech Sheet 71604

# HYDRAULIC QUICK RELEASE COUPLINGS



## PAV1 Series, ISO A Steel Couplings

Standard: ISO 7241-1 A  
 Occlusion: Poppet  
 Locking: Radial balls  
 Material: Steel  
 Finishing: Zn-Fe (Cr III)

Available Threads: BSP, NPT, RC, SAE  
 Standard Seals: Nitrile  
 Optional Seals: Viton, EPDM  
 Connection Under Pressure: Not allowed

Working Temperature:  
 -25°C to +100°C Nitrile  
 -25°C to +200°C Viton

Maximum Working Pressure:  
 350 bar



### Coupling with Nitrile Seal, BSPP

0457	Thread	ISO	Max Pressure Bar
PAV1.0606.002	1/4"	6.3	350
PAV1.1010.002	3/8"	10	350
PAV1.1313.002	1/2"	12.5	250
PAV1.2019.002	3/4"	20	250
PAV1.2525.002	1"	25	200
PAV1.3031.002	1.1/4"	31.5	200
PAV1.3939.002	1.1/2"	40	190
PAV1.5051.002	2"	50	160

Tech Sheet 20473

### Coupling with Nitrile Seal, NPT

0457	Thread	ISO	Max Pressure Bar
PAV1.0606.012	1/4"	6.3	350
PAV1.1010.012	3/8"	10	350
PAV1.1313.012	1/2"	12.5	250
PAV1.2019.012	3/4"	20	250
PAV1.2525.012	1"	25	200
PAV1.3031.012	1.1/4"	31.5	200
PAV1.3939.012	1.1/2"	40	190
PAV1.5051.012	2"	50	160

Tech Sheet 20473

### Coupling with Viton Seal, BSPP

0457	Thread	ISO	Max Pressure Bar
PAV1.0606.002 V	1/4"	6.3	350
PAV1.1010.002 V	3/8"	10	350
PAV1.1313.002 V	1/2"	12.5	250
PAV1.2019.002 V	3/4"	20	250
PAV1.2525.002 V	1"	25	200
PAV1.3031.002 V	1.1/4"	31.5	200
PAV1.3939.002 V	1.1/2"	40	190
PAV1.5051.002 V	2"	50	160

Tech Sheet 20473



### Plug with Nitrile Seal, BSPP

0457	Thread	ISO	Max Pressure Bar
PAV1.0606.003	1/4"	6.3	350
PAV1.1010.003	3/8"	10	350
PAV1.1313.003	1/2"	12.5	250
PAV1.2019.003	3/4"	20	250
PAV1.2525.003	1"	25	200
PAV1.3031.003	1.1/4"	31.5	200
PAV1.3939.003	1.1/2"	40	190
PAV1.5051.003	2"	50	160

Tech Sheet 20473

### Plug with Nitrile Seal, NPT

0457	Thread	ISO	Max Pressure Bar
PAV1.0606.013	1/4"	6.3	350
PAV1.1010.013	3/8"	10	350
PAV1.1313.013	1/2"	12.5	250
PAV1.2019.013	3/4"	20	250
PAV1.2525.013	1"	25	200
PAV1.3031.013	1.1/4"	31.5	200
PAV1.3939.013	1.1/2"	40	190
PAV1.5051.013	2"	50	160

Tech Sheet 20473

### Plug with Viton Seal, BSPP

0457	Thread	ISO	Max Pressure Bar
PAV1.0606.003 V	1/4"	6.3	350
PAV1.1010.003 V	3/8"	10	350
PAV1.1313.003 V	1/2"	12.5	250
PAV1.2019.003 V	3/4"	20	250
PAV1.2525.003 V	1"	25	200
PAV1.3031.003 V	1.1/4"	31.5	200
PAV1.3939.003 V	1.1/2"	40	190
PAV1.5051.003 V	2"	50	160

Tech Sheet 20473

## ISO A Protection Caps & Plugs



### Plug for Coupling

0457	To Suit	Material
SPAV.06002	ISO 6.3	Plastic
SPAV.10002	ISO 10	Plastic
SPAV.13002	ISO 12.5	Plastic
SPAV.20002	ISO 20	Plastic
SPAV.25002	ISO 25	Plastic

Tech Sheet 20475



### Cap for Plug

0457	To Suit	Material
SPAV.06003	ISO 6.3	Plastic
SPAV.10003	ISO 10	Plastic
SPAV.13003	ISO 12.5	Plastic
SPAV.20003	ISO 20	Plastic
SPAV.25003	ISO 25	Plastic

Tech Sheet 20475

**BURNETT & HILLMAN**  
 HYDRAULIC ADAPTOR UK MANUFACTURER



For Burnett & Hillman Hydraulic Adaptors  
 see pages 52-81

# HYDRAULIC QUICK RELEASE COUPLINGS

stainless steel



## PAVX Series, ISO A Stainless Steel Couplings

Working Temperature:  
-25°C to +200°C Viton

Maximum Working Pressure:  
450 bar

Standard: ISO 7241-1 A  
Occlusion: Poppet  
Locking: Radial balls  
Material: Stainless steel AISI 316

Available Threads: BSP, NPT  
Standard Seals: Viton  
Optional Seals: FFKM, EPDM  
Connection Under Pressure: Not allowed

### Coupling, BSPP

0457	Thread	ISO	Max Pressure Bar
PAVX.0606.002	1/4"	6.3	450
PAVX.1010.002	3/8"	10	300
PAVX.1313.002	1/2"	12.5	300
PAVX.2019.002	3/4"	20	250
PAVX.2525.002	1"	25	200
PAVX.3031.002	1.1/4"	31.5	100
PAVX.3939.002	1.1/2"	40	80
PAVX.5051.002	2"	50	60

Tech Sheet 20474



### Plug, BSPP

0457	Thread	ISO	Max Pressure Bar
PAVX.0606.003	1/4"	6.3	450
PAVX.1010.003	3/8"	10	300
PAVX.1313.003	1/2"	12.5	300
PAVX.2019.003	3/4"	19	250
PAVX.2525.003	1"	25	200
PAVX.3031.003	1.1/4"	31.5	100
PAVX.3939.003	1.1/2"	40	80
PAVX.5051.003	2"	50	60

Tech Sheet 20474



## PBVX Series, ISO B Stainless Steel Couplings

Working Temperature:  
-25°C to +200°C

Maximum Working Pressure:  
400 bar

Standard: ISO 7241-1 B  
Occlusion: Poppet  
Locking: Radial balls  
Material: Stainless steel AISI 316

Available Threads: BSP, NPT  
Standard Seals: Viton  
Optional Seals: FFKM, EPDM  
Connection Under Pressure: Not allowed

### Coupling, BSPP

0457	Thread	ISO	Max Pressure Bar
PBVX.0404.002	1/8"	5	400
PBVX.0606.002	1/4"	6.3	350
PBVX.1010.002	3/8"	10	300
PBVX.1313.002	1/2"	12.5	300
PBVX.2019.002	3/4"	20	220
PBVX.2525.002	1"	25	200
PBVX.3931.002	1.1/4"	40	80
PBVX.3939.002	1.1/2"	40	80
PBVX.5051.002	2"	50	60

Tech Sheet 20478



### Plug, BSPP

0457	Thread	ISO	Max Pressure Bar
PBVX.0404.003	1/8"	5	400
PBVX.0606.003	1/4"	6.3	350
PBVX.1010.003	3/8"	10	300
PBVX.1313.003	1/2"	12.5	300
PBVX.2019.003	3/4"	20	220
PBVX.2525.003	1"	25	200
PBVX.3931.003	1.1/4"	40	80
PBVX.3939.003	1.1/2"	40	80
PBVX.5051.003	2"	50	60

Tech Sheet 20478



## PTV1 Series, Nordic Interchange Steel Couplings

Working Temperature:  
-25°C to +100°C

Maximum Working Pressure:  
300 to 370 bar

Interchange: Tema T Series  
Occlusion: Poppet  
Locking: Radial balls  
Material: Steel  
Finishing: Zn-Fe (Cr III)

Available Threads: BSP, NPT  
Standard Seals: Nitrile  
Optional Seals: Viton, EPDM  
Connection Under Pressure: Not allowed

### Coupling, BSPP

0457	Thread	ISO	Max Pressure Bar
PTV1.1010.002	3/8"	10	370
PTV1.1313.002	1/2"	12.5	350
PTV1.2019.002	3/4"	19	300
PTV1.2525.002	1"	25	300

Tech Sheet 68086



### Plug, BSPP

0457	Thread	ISO	Max Pressure Bar
PTV1.1010.003	3/8"	10	370
PTV1.1313.003	1/2"	12.5	350
PTV1.2019.003	3/4"	19	300
PTV1.2525.003	1"	25	300

Tech Sheet 68086



# HYDRAULIC QUICK RELEASE COUPLINGS



## PPV3 Series, ISO A Push/Pull Breakaway Steel Couplings

Working Temperature:  
-25°C to +100°C

Maximum Working Pressure:  
350 bar

Push/pull design, ideal for mobile applications using hydraulic attachments, PPV series is designed to break away in case of accidental pulls, one hand to connect and disconnect.

**Standard:** ISO 7241-1 A  
**Sleeve:** Double acting  
**Occlusion:** Poppet  
**Locking:** Radial balls

**Material:** steel  
**Finishing:** Zn-Fe (Cr III)  
**Available Threads:** BSP, NPT, SAE, metric  
**Standard Seals:** Nitrile  
**Optional Seals:** Viton, EPDM  
**Connection Under Pressure:** Not allowed



Coupling, BSPP

0457	Thread	ISO	Max Pressure Bar
PPV3.0606.112	1/4"	6.3	350
PPV3.1010.112	3/8"	10	300
PPV3.1313.112	1/2"	12.5	250
PPV3.2019.112	3/4"	19	250
PPV3.2525.112	1"	25	225
Tech Sheet 20475			



Plug, BSPP

0457	Thread	ISO	Max Pressure Bar
PPV3.0606.113	1/4"	6.3	350
PPV3.1010.113	3/8"	10	300
PPV3.1313.113	1/2"	12.5	250
PPV3.2019.113	3/4"	19	250
PPV3.2525.113	1"	25	225
Tech Sheet 20475			



Coupling, DIN 2353, Male Thread

0457	Thread	Size	ISO	Max Pressure Bar
PPV3.1012.302	M12 x 1.5	6L	10	300
PPV3.1014.302	M14 x 1.5	8L	10	300
PPV3.1016.302	M16 x 1.5	10L	10	300
PPV3.1018.302	M18 x 1.5	12L	10	300
PPV3.1016.402	M16 x 1.5	8S	10	300
PPV3.1018.402	M18 x 1.5	10S	10	300
PPV3.1020.402	M20 x 1.5	12S	10	300
PPV3.1314.302	M14 x 1.5	8L	12.5	250
PPV3.1316.302	M16 x 1.5	10L	12.5	250
PPV3.1318.302	M18 x 1.5	12L	12.5	250
PPV3.1322.302	M22 x 1.5	15L	12.5	250
PPV3.1326.302	M26 x 1.5	18L	12.5	250
PPV3.1318.402	M18 x 1.5	10S	12.5	250
PPV3.1320.402	M20 x 1.5	12S	12.5	250
PPV3.1322.402	M22 x 1.5	14S	12.5	250
PPV3.1324.402	M24 x 1.5	16S	12.5	250
PPV3.1330.402	M30 x 2	20S	12.5	250
Tech Sheet 20475				



Plug, DIN 2353, Male Thread

0457	Thread	Size	ISO	Max Pressure Bar
PPV3.1012.303	M12 x 1.5	6L	10	300
PPV3.1014.303	M14 x 1.5	8L	10	300
PPV3.1016.303	M16 x 1.5	10L	10	300
PPV3.1018.303	M18 x 1.5	12L	10	300
PPV3.1016.403	M16 x 1.5	8S	10	300
PPV3.1018.403	M18 x 1.5	10S	10	300
PPV3.1020.403	M20 x 1.5	12S	10	300
PPV3.1314.303	M14 x 1.5	8L	12.5	250
PPV3.1316.303	M16 x 1.5	10L	12.5	250
PPV3.1318.303	M18 x 1.5	12L	12.5	250
PPV3.1322.303	M22 x 1.5	15L	12.5	250
PPV3.1326.303	M26 x 1.5	18L	12.5	250
PPV3.1318.403	M18 x 1.5	10S	12.5	250
PPV3.1320.403	M20 x 1.5	12S	12.5	250
PPV3.1322.403	M22 x 1.5	14S	12.5	250
PPV3.1324.403	M24 x 1.5	16S	12.5	250
PPV3.1330.403	M30 x 2	20S	12.5	250
Tech Sheet 20475				



Coupling, DIN 2353, Male Bulkhead Thread

0457	Thread	Size	ISO	Max Pressure Bar
PPV3.1012.502	M12 x 1.5	6L	10	300
PPV3.1014.502	M14 x 1.5	8L	10	300
PPV3.1016.502	M16 x 1.5	10L	10	300
PPV3.1018.502	M18 x 1.5	12L	10	300
Tech Sheet 20475				



Plug, DIN 2353, Male Bulkhead Thread

0457	Thread	Size	ISO	Max Pressure Bar
PPV3.1012.503	M12 x 1.5	6L	10	300
PPV3.1014.503	M14 x 1.5	8L	10	300
PPV3.1016.503	M16 x 1.5	10L	10	300
PPV3.1018.503	M18 x 1.5	12L	10	300
PPV3.1016.603	M16 x 1.5	8S	10	300
PPV3.1018.603	M18 x 1.5	10S	10	300
PPV3.1020.603	M20 x 1.5	12S	10	300
PPV3.1314.503	M14 x 1.5	8L	12.5	250
PPV3.1316.503	M16 x 1.5	10L	12.5	250
PPV3.1318.503	M18 x 1.5	12L	12.5	250
PPV3.1322.503	M22 x 1.5	15L	12.5	250
PPV3.1326.503	M26 x 1.5	18L	12.5	250
PPV3.1318.603	M18 x 1.5	10S	12.5	250
PPV3.1320.603	M20 x 1.5	12S	12.5	250
PPV3.1322.603	M22 x 1.5	14S	12.5	250
PPV3.1324.603	M24 x 1.5	16S	12.5	250
PPV3.1330.603	M30 x 2	20S	12.5	250
Tech Sheet 20475				



The DNP range also includes multi-coupling plates which allow simultaneous coupling and uncoupling of a certain number of hydraulic and/or electrical lines.



# HYDRAULIC QUICK RELEASE COUPLINGS



## PLTX Series, ISO 16028 Flat Face Couplings, Stainless Steel

**Standard:** ISO 16028  
**Occlusion:** Flat face  
**Locking:** Radial balls  
**Material:** Stainless steel AISI 316

**Available Threads:** BSP, NPT, SAE  
**Standard Seals:** Viton  
**Optional Seals:** EPDM, FFKM  
**Connection Under Pressure:** Not allowed

**Working Temperature:**  
 -25°C to +100°C

**Maximum Working Pressure:** 350 bar



### Coupling, BSPP

0457	Thread	ISO	Max Pressure Bar
PLTX.0606.112	1/4"	6.3	400
PLTX.1310.112	3/8"	10	250
PLTX.1313.112	1/2"	10	250
PLTX.2013.112	1/2"	12.5	250
PLTX.2019.112	3/4"	12.5	250
PLTX.2519.112	3/4"	19	250
PLTX.2525.112	1"	19	250
PLTX.3031.112	1.1/4"	25	250
PLTX.3939.112	1.1/2"	40	150
PLTX.5051.112	2"	50	100

Tech Sheet 20483



### Plug, BSPP

0457	Thread	ISO	Max Pressure Bar
PLTX.0606.113	1/4"	6.3	400
PLTX.1310.113	3/8"	10	250
PLTX.1313.113	1/2"	10	250
PLTX.2013.113	1/2"	12.5	250
PLTX.2019.113	3/4"	12.5	250
PLTX.2519.113	3/4"	19	250
PLTX.2525.113	1"	19	250
PLTX.3031.113	1.1/4"	25	250
PLTX.3939.113	1.1/2"	40	150
PLTX.5051.113	2"	50	100

Tech Sheet 20483

## PLSX Series, Flat Face, Stainless Steel

**Interchange:** Snap-Tite 71  
**Occlusion:** Flat face  
**Locking:** Radial balls  
**Material:** Stainless steel AISI 316

**Available Threads:** BSP, NPT  
**Standard Seals:** Viton  
**Optional Seals:** FFKM, EPDM  
**Connection Under Pressure:** Not allowed

**Working Temperature:**  
 -25°C to +100°C

**Maximum Working Pressure:** 350 bar



### Coupling, BSPP

0457	Thread	ISO	Max Pressure Bar
PLSX.0606.112	1/4"	6.3	350
PLSX.1010.112	3/8"	10	350
PLSX.1013.112	1/2"	10	350
PLSX.1313.112	1/2"	12.5	350
PLSX.2019.112	3/4"	19	350
PLSX.2525.112	1"	25	350
PLSX.2531.112	1.1/4"	25	350

Tech Sheet 20485



### Plug, BSPP

0457	Thread	ISO	Max Pressure Bar
PLSX.0606.113	1/4"	6.3	350
PLSX.1010.113	3/8"	10	350
PLSX.1013.113	1/2"	10	350
PLSX.1313.113	1/2"	12.5	350
PLSX.2019.113	3/4"	19	350
PLSX.2525.113	1"	25	350
PLSX.2531.113	1.1/4"	25	350

Tech Sheet 20485

## PLS1 Series, Flat Face

**Material:** Steel  
**Finishing:** Zn-Fe (Cr III)  
**Available Threads:** BSP, NPT, SAE

**Standard Seals:** Nitrile  
**Optional Seals:** Viton, EPDM  
**Connection Under Pressure:** Not allowed



### Coupling, BSPP

0457	Thread	ISO	Max Pressure Bar
PLS1.0606.112	1/4"	6.3	350
PLS1.1010.112	3/8"	10	350
PLS1.1013.112	1/2"	10	350
PLS1.1313.112	1/2"	12.5	350
PLS1.2019.112	3/4"	19	350
PLS1.2525.112	1"	25	350
PLS1.2531.112	1.1/4"	25	350

Tech Sheet 20484



### Plug, BSPP

0457	Thread	ISO	Max Pressure Bar
PLS1.0606.113	1/4"	6.3	350
PLS1.1010.113	3/8"	10	350
PLS1.1013.113	1/2"	10	350
PLS1.1313.113	1/2"	12.5	350
PLS1.2019.113	3/4"	19	350
PLS1.2525.113	1"	25	350
PLS1.2531.113	1.1/4"	25	350

Tech Sheet 20484

## ISO 16028 Flat Face Protection Caps & Plugs

Plug for Coupling

Cap for Plug



### Plug for Coupling

0457	To Suit	Material
SPLT.06002	ISO 6.3	Plastic
SPLT.13002	ISO 10	Plastic
SPLT.20002	ISO 12.5	Plastic
SPLT.25002	ISO 19	Plastic

Tech Sheet 20483

### Cap for Plug

0457	To Suit	Material
SPLT.06003	ISO 6.3	Plastic
SPLT.13003	ISO 10	Plastic
SPLT.20003	ISO 12.5	Plastic
SPLT.25003	ISO 19	Plastic
SPLT.30003	ISO 25	Plastic

Tech Sheet 20483

## ISO 16028 Automatic Caps



### Cap for Coupling

0457	To Suit	Colour
SPLT.13302	ISO 10	Red
SPLT.13342	ISO 10	Black
SPPV.13302	ISO 12.5	Black
SPPV.13312	ISO 12.5	Black
SPPV.13322	ISO 12.5	Yellow
SPPV.13342	ISO 12.5	Red

Tech Sheet 20483

# HYDRAULIC QUICK RELEASE COUPLINGS



## PBV1 Series, ISO B Steel Couplings

Standard: ISO 7241-1 B

Occlusion: Poppet

Locking: Radial balls

Material: Steel

Finishing: Zn-Fe (Cr III)

Available Threads: BSP, NPT

Standard Seals: Nitrile

Optional Seals: Viton, EPDM

Connection Under Pressure: Not allowed



Working Temperature:  
-25°C to +100°C



Maximum Working Pressure:  
500 bar



### Coupling, BSPP

0457	Thread	ISO	Max Pressure Bar
PBV1.0404.002	1/8"	5	500
PBV1.0606.002	1/4"	6.3	250
PBV1.1010.002	3/8"	10	250
PBV1.1313.002	1/2"	12.5	250
PBV1.2019.002	3/4"	20	250
PBV1.2525.002	1"	25	250
PBV1.3931.002	1.1/4"	40	200
PBV1.3939.002	1.1/2"	40	200
PBV1.5051.002	2"	50	100

Tech Sheet 20476



### Plug, BSPP

0457	Thread	ISO	Max Pressure Bar
PBV1.0404.003	1/8"	5	500
PBV1.0606.003	1/4"	6.3	250
PBV1.1010.003	3/8"	10	250
PBV1.1313.003	1/2"	12.5	250
PBV1.2019.003	3/4"	20	250
PBV1.2525.003	1"	25	250
PBV1.3931.003	1.1/4"	40	200
PBV1.3939.003	1.1/2"	40	200
PBV1.5051.003	2"	50	100

Tech Sheet 20476

## PBVM Series, ISO B Brass Couplings

Standard: ISO 7241-1 B

Occlusion: Poppet

Locking: Radial balls

Material: Brass

Finishing: Nickel plating on request

Available Threads: BSP, NPT

Standard Seals: Viton

Optional Seals: FFKM, EPDM

Connection Under Pressure: Not allowed



Working Temperature:  
-25°C to +200°C



Maximum Working Pressure:  
300 bar



### Coupling, BSPP

0457	Thread	ISO	Max Pressure Bar
PBVM.0404.002	1/8"	5	300
PBVM.0606.002	1/4"	6.3	200
PBVM.1010.002	3/8"	10	200
PBVM.1313.002	1/2"	12.5	180
PBVM.2019.002	3/4"	20	130
PBVM.2525.002	1"	25	130
PBVM.3931.002	1.1/4"	40	60
PBVM.3939.002	1.1/2"	40	60
PBVM.5051.002	2"	50	50

Tech Sheet 20477



### Plug, BSPP

0457	Thread	ISO	Max Pressure Bar
PBVM.0404.003	1/8"	5	300
PBVM.0606.003	1/4"	6.3	200
PBVM.1010.003	3/8"	10	200
PBVM.1313.003	1/2"	12.5	180
PBVM.2019.003	3/4"	20	130
PBVM.2525.003	1"	25	130
PBVM.3931.003	1.1/4"	40	60
PBVM.3939.003	1.1/2"	40	60
PBVM.5051.003	2"	50	50

Tech Sheet 20477

## ISO B Protection Caps & Plugs

Cap for Plug



Plug for Coupling

### Plug for Coupling

0457	To Suit	Material
SPBV.06002	ISO 6.3	Plastic
SPBV.10002	ISO 10	Plastic
SPBV.13002	ISO 12.5	Plastic
SPBV.20002	ISO 20	Plastic
SPBV.25002	ISO 25	Plastic

Tech Sheet 20477

### Cap for Plug

0457	To Suit	Material
SPBV.06003	ISO 6.3	Plastic
SPBV.10003	ISO 10	Plastic
SPBV.13003	ISO 12.5	Plastic
SPBV.20003	ISO 20	Plastic
SPBV.25003	ISO 25	Plastic

Tech Sheet 20477



For High Pressure Metric Tube Couplings  
see pages 138-140





# HYDRAULIC QUICK RELEASE COUPLINGS



## PLT1 Series, ISO 16028 Flat Face Couplings

**Standard:** ISO16028

**Occlusion:** Flat face

**Locking:** Radial balls

**Material:** Steel

**Finishing:** Zn-Fe (Cr III)

**Available Threads:** BSP, NPT, SAE

**Standard Seals:** Nitrile

**Optional Seals:** Viton, EPDM

**Connection Under Pressure:** Not allowed

**Working Temperature:**  
-25°C to +100°C

**Maximum Working Pressure:**  
300 bar



### Coupling, BSPP

0457	Thread	ISO	Max Pressure Bar
PLT1.0606.002	1/4"	6.3	300
PLT1.1310.002	3/8"	10	250
PLT1.1313.002	1/2"	10	250
PLT1.2013.002	1/2"	12.5	250
PLT1.2019.002	3/4"	12.5	250
PLT1.2519.002	3/4"	19	250
PLT1.2525.002	1"	19	250
PLT1.3031.002	1.1/4"	25	250
PLT1.3939.002	1.1/2"	40	250
PLT1.5051.112	2"	50	250

Tech Sheet 20479



### Plug, BSPP

0457	Thread	ISO	Max Pressure Bar
PLT1.0606.003	1/4"	6.3	300
PLT1.1310.003	3/8"	10	250
PLT1.1313.003	1/2"	10	250
PLT1.2013.003	1/2"	12.5	250
PLT1.2019.003	3/4"	12.5	250
PLT1.2519.003	3/4"	19	250
PLT1.2525.003	1"	19	250
PLT1.3031.003	1.1/4"	25	250
PLT1.3939.003	1.1/2"	40	250

Tech Sheet 20479

## PLT4 Series, ISO 16028 Flat Face Couplings

High working pressures to 7,350 psi/500 bar, sleeve lock device, locking radial balls. PLT 4 series is ideal for non-spill high pressure and high impulse applications.

**Standard:** ISO16028

**Occlusion:** Flat face

**Locking:** Radial balls

**Material:** Steel

**Finishing:** Zn-Fe (Cr III) and Zn-Ni

**Available Threads:** BSP, NPT, SAE, metric

**Standard Seals:** Nitrile and PU

**Optional Seals:** Viton, EPDM

**Connection Under Pressure:** Not allowed

**Working Temperature:**  
-25°C to +100°C

**Maximum Working Pressure:**  
500 bar



### Coupling, BSPP

0457	Thread	ISO	Max Pressure Bar
PLT4.0606.112	1/4"	6.3	500
PLT4.1310.112	3/8"	10	400
PLT4.1313.112	1/2"	10	350
PLT4.2013.112	1/2"	12.5	350
PLT4.2019.112	3/4"	12.5	350
PLT4.2519.112	3/4"	19	350
PLT4.2525.112	1"	19	350
PLT4.3025.112	1"	25	350
PLT4.3031.112	1.1/4"	25	350

Tech Sheet 20480

### Coupling, SAE

0457	Thread	ISO	Max Pressure Bar
PLT4.1319.032	3/4"	10	350
PLT4.2027.032	1.1/16"	12.5	350

Tech Sheet 20480



### Plug, BSPP

0457	Thread	ISO	Max Pressure Bar
PLT4.0606.113	1/4"	6.3	500
PLT4.1310.113	3/8"	10	400
PLT4.1313.113	1/2"	10	350
PLT4.2013.113	1/2"	12.5	350
PLT4.2019.113	3/4"	12.5	350
PLT4.2519.113	3/4"	19	350
PLT4.2525.113	1"	19	350
PLT4.3025.113	1"	25	350
PLT4.3031.113	1.1/4"	25	350

Tech Sheet 20480

### Plug, SAE

0457	Thread	ISO	Max Pressure Bar
PLT4.1319.033	3/4"	10	350
PLT4.2027.033	1.1/16"	12.5	350

Tech Sheet 20480

## PLK4 Series, ISO 16028 Flat Face Plug, Connect Under Pressure

Interchanges with any ISO16028 quick disconnect, connect under pressure to 3,675 psi/250 bar, high pressure up to 5,800 psi/400 bar, flat face, non-spill design, high resistance steel. PLK4 series is ideal for systems that need to be connected under residual pressure, high pressure applications, attachments that may have trapped pressure in the system.

**Standard:** ISO16028

**Occlusion:** Flat face

**Locking:** Radial balls

**Material:** High resistance steel

**Finishing:** Zn-Fe (Cr III) and Zn-Ni

**Available Threads:** BSP, NPT, SAE, metric

**Standard Seals:** Nitrile and PU

**Optional Seals:** Viton, EPDM

**Connection Under Pressure:** Allowed (male side only)

**Maximum Residual Pressure:** 250 bar

**Working Temperature:**  
-25°C to +100°C

**Maximum Working Pressure:**  
400 bar



### Plug, BSPP

0457	Thread	ISO	Max Pressure Bar
PLK4.0606.113	1/4"	6.3	400
PLK4.1310.113	3/8"	10	350
PLK4.1313.113	1/2"	10	350
PLK4.2013.113	1/2"	12.5	350
PLK4.2019.113	3/4"	12.5	350
PLK4.2519.113	3/4"	19	300
PLK4.2525.113	1"	19	300
PLK4.3025.113	1"	25	300
PLK4.3031.113	1.1/4"	25	300
PLK4.3939.113	1.1/2"	40	250
PLK4.5051.113	2"	50	250

Tech Sheet 20482

# HYDRAULIC QUICK RELEASE COUPLINGS



## PLT Colour Safe System

- For use with PLT1, PLT4, PLT5 and PLTX series couplings
- Helps keep workers safe
- Helps to prevent equipment damage
- Easy to use and implement



### Coupling Colour Ring, ISO 6.3

0457	Colour
PLT.006.802	Red
PLT.006.812	Yellow
PLT.006.822	Green
PLT.006.832	Blue
PLT.006.852	White
PLT.006.862	Grey
PLT.006.882	Violet
PLT.006.892	Brown

Tech Sheet 68088

### Coupling Colour Ring, ISO 10

0457	Colour
PLT.013.802	Red
PLT.013.812	Yellow
PLT.013.822	Green
PLT.013.832	Blue
PLT.013.852	White
PLT.013.862	Grey
PLT.013.872	Orange
PLT.013.882	Violet
PLT.013.892	Brown

Tech Sheet 68088

### Coupling Colour Ring, ISO 12.5

0457	Colour
PLT.019.802	Red
PLT.019.812	Yellow
PLT.019.822	Green
PLT.019.832	Blue
PLT.019.852	White
PLT.019.862	Grey
PLT.019.872	Orange
PLT.019.882	Violet
PLT.019.892	Brown

Tech Sheet 68088

### Coupling Colour Ring, ISO 19

0457	Colour
PLT.025.802	Red
PLT.025.812	Yellow
PLT.025.822	Green
PLT.025.832	Blue
PLT.025.842	Black
PLT.025.872	Orange

Tech Sheet 68088

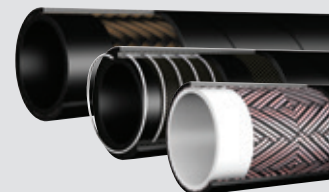
### Coupling Colour Ring, ISO 25

0457	Colour
PLT.030.802	Red
PLT.030.812	Yellow
PLT.030.822	Green
PLT.030.832	Blue
PLT.030.872	Orange

Tech Sheet 68088



For Hydraulic Hose  
see pages 6-14



# HYDRAULIC QUICK RELEASE COUPLINGS



## PLT Colour Safe System

- Helps keep workers safe
- Helps to prevent equipment damage
- Easy to use and implement



### Plug Colour Ring, ISO 6.3 for use with PLT1, PLT4 & PLTX

0457	Colour
PLT.006.803	Red
PLT.006.813	Yellow
PLT.006.833	Blue
PLT.006.853	White
PLT.006.863	Grey
PLT.006.873	Orange
PLT.006.883	Violet
PLT.006.893	Brown

Tech Sheet 68088

### Plug Colour Ring, ISO 10 for use with PLT1

0457	Colour
PLT.613.803	Red
PLT.613.813	Yellow
PLT.613.823	Green
PLT.613.833	Blue
PLT.613.843	Black
PLT.613.853	White
PLT.613.873	Orange
PLT.613.893	Brown

Tech Sheet 68088

### Plug Colour Ring, ISO 12.5 for use with PLT1, PLT4 & PLTX

0457	Colour
PLT.019.803	Red
PLT.019.813	Yellow
PLT.019.823	Green
PLT.019.833	Blue
PLT.019.853	White
PLT.019.863	Grey
PLT.019.873	Orange
PLT.019.883	Violet
PLT.019.893	Brown

Tech Sheet 68088

### Plug Colour Ring, ISO 19 for use with PLT1, PLT4, PLT5 & PLTX

0457	Colour
PLT.025.803	Red
PLT.025.813	Yellow
PLT.025.823	Green
PLT.025.833	Blue
PLT.025.843	Black
PLT.025.873	Orange

Tech Sheet 68088

### Plug Colour Ring, ISO 25 for use with PLT4.3031.113, PLT4.3031.013 & PLT4.3041.033

0457	Colour
PLT.030.803	Red
PLT.030.813	Yellow
PLT.030.823	Green
PLT.030.833	Blue
PLT.030.843	Black
PLT.030.873	Orange

Tech Sheet 68088



For **Pipe Repair Couplings**  
see page **1557**



# HYDRAULIC QUICK RELEASE COUPLINGS

## PST4 Series, Screw to Connect Flat Face Couplings

Interchanges with Stucchi VEP, high-tech anti-corrosion plating salt spray tested for 700 hours before any appearance of surface red rust, high working pressures, connects and disconnects by hand up to 4,400 psi/300 bar, seal is blowout resistant to 4,400 psi/300 bar when connecting or disconnecting with residual pressure. Exceeds 1,000,000 impulse cycles, flat face design eliminates spillage upon disconnection, thread to connect style coupling eliminates brinelling issues, heavy-duty hex nut.

**Interchangeability:** Stucchi VEP  
**Occlusion:** Flat face  
**Locking:** Screw  
**Material:** Steel  
**Finishing:** Zn-Fe (Cr III) and Zn-Ni

**Available Threads:** BSP, NPT, SAE  
**Standard Seals:** Nitrile and PU  
**Optional Seals:** Viton, EPDM  
**Connection Under Pressure:** Allowed (both male or female side)

**Maximum Residual Pressure:** 300 bar  
**Working Temperature:** -25°C to +100°C

**Maximum Working Pressure:** 450 bar

### Coupling, BSPP

0457	Thread	ISO	Max Pressure Bar
PST4.0606.112	1/4"	6.3	450
PST4.1310.112	3/8"	10	350
PST4.1313.112	1/2"	10	350
PST4.2013.112	1/2"	12.5	350
PST4.2019.112	3/4"	12.5	350
PST4.2519.112	3/4"	19	350
PST4.2525.112	1"	19	350
PST4.3025.112	1"	25	350
PST4.3031.112	1.1/4"	25	350
PST4.3939.112	1.1/2"	40	300

Tech Sheet 20486



### Plug, BSPP

0457	Thread	ISO	Max Pressure Bar
PST4.0606.113	1/4"	6.3	450
PST4.1310.113	3/8"	10	350
PST4.1313.113	1/2"	10	350
PST4.2013.113	1/2"	12.5	350
PST4.2019.113	3/4"	12.5	350
PST4.2519.113	3/4"	19	350
PST4.2525.113	1"	19	350
PST4.3025.113	1"	25	350
PST4.3031.113	1.1/4"	25	350
PST4.3939.113	1.1/2"	40	300

Tech Sheet 20486



## PVV3 Series, ISO 14541 Screw Couplings

**Standard:** ISO 14541  
**Occlusion:** Poppet  
**Locking:** Screw  
**Material:** Steel

**Finishing:** Zn-Fe (Cr III)  
**Available Threads:** BSP, NPT, SAE, metric  
**Standard Seals:** Nitrile  
**Optional Seals:** Viton, EPDM

**Connection Under Pressure:** Allowed (both male or female side)  
**Maximum Residual Pressure:** working pressure  
**Working Temperature:** -25°C to +100°C  
**Maximum Working Pressure:** 450 bar

### Coupling, BSPP

0457	Thread	ISO	Max Pressure Bar
PVV3.0606.112	1/4"	6.3	450
PVV3.1010.112	3/8"	10	400
PVV3.1313.112	1/2"	12.5	400
PVV3.2019.112	3/4"	19	300
PVV3.2525.112	1"	25	300
PVV3.3031.112	1.1/4"	31.5	300
PVV3.3039.112	1.1/2"	31.5	300

Tech Sheet 20487



### Plug, BSPP

0457	Thread	ISO	Max Pressure Bar
PVV3.0606.113	1/4"	6.3	450
PVV3.1010.113	3/8"	10	400
PVV3.1313.113	1/2"	12.5	400
PVV3.2019.113	3/4"	19	300
PVV3.2525.113 T	1"	25	300
PVV3.3031.113 T	1.1/4"	31.5	300
PVV3.3039.113 T	1.1/2"	31.5	300

Tech Sheet 20487



## VVS High Pressure Screw Couplings & Plugs

**Interchange:** VVS faster  
**Occlusion:** Poppet  
**Locking:** Screw  
**Material:** Steel

**Finishing:** Zn-Fe (Cr III)  
**Available Threads:** BSP, NPT  
**Standard Seals:** Nitrile

**Optional Seals:** Viton, EPDM  
**Connection Under Pressure:** Allowed (both male or female side)

**Working Temperature:** -25°C to +100°C

**Working Pressure:** 210 to 650 bar

### Coupling, BSPP

0457	Thread	ISO	Max Pressure Bar
VVV1.1010.002	3/8"	10	650
VVV1.1313.002	1/2"	12.5	600
VVV1.2019.002	3/4"	19	500
VVV1.2525.002	1"	25	460
VVV1.3031.002	1.1/4"	31.5	360
VVV1.3939.002	1.1/2"	40	360
VVV1.5051.002	2"	50	210

Tech Sheet 68087



### Plug, BSPP

0457	Thread	ISO	Max Pressure Bar
VVV1.1010.003	3/8"	10	650
VVV1.1313.003	1/2"	12.5	600
VVV1.2019.003	3/4"	19	500
VVV1.2525.003	1"	25	460
VVV1.3031.003	1.1/4"	31.5	360
VVV1.3939.003	1.1/2"	40	360
VVV1.5051.003	2"	50	210

Tech Sheet 68087



## PST4 Series, Protection Caps & Plugs

### Plug for Coupling



### Cap for Plug



### Plug for Coupling

0457	To Suit	Material
SPST.06202	ISO 6.3	Aluminium
SPST.13202	ISO 10	Aluminium
SPST.20202	ISO 12.5	Aluminium
SPST.25202	ISO 19	Aluminium
SPST.30202	ISO 25	Aluminium
SPST.39202	ISO 40	Aluminium

Tech Sheet 20486

### Cap for Plug

0457	To Suit	Material
SPST.06203	ISO 6.3	Aluminium
SPST.13203	ISO 10	Aluminium
SPST.20203	ISO 12.5	Aluminium
SPST.25203	ISO 19	Aluminium
SPST.30203	ISO 25	Aluminium
SPST.39203	ISO 40	Aluminium

Tech Sheet 20486

## ISO 14541 Protection Caps & Plugs

### Cap for Plug



### Plug for Coupling



### Plug for Coupling

0457	To Suit	Material
SPVV.06002	ISO 6.3	Polypropylene
SPVV.10002	ISO 10	Polypropylene
SPVV.13002	ISO 12.5	Polypropylene
SPVV.20002	ISO 20	Polypropylene
SPVV.25002	ISO 25	Polypropylene
SPVV.30002	ISO 31.5	Polypropylene
SPVV.10202	ISO 10	Aluminium
SPVV.13202	ISO 12.5	Aluminium
SPVV.20202	ISO 20	Aluminium
SPVV.25202	ISO 25	Aluminium
SPVV.30202	ISO 31.5	Aluminium

Tech Sheet 20487

### Cap for Plug

0457	To Suit	Material
SPVV.06003	ISO 6.3	Polypropylene
SPVV.10003	ISO 10	Polypropylene
SPVV.13003	ISO 12.5	Polypropylene
SPVV.20003	ISO 20	Polypropylene
SPVV.25003	ISO 25	Polypropylene
SPVV.30003	ISO 31.5	Polypropylene
SPVV.10203	ISO 10	Aluminium
SPVV.13203	ISO 12.5	Aluminium
SPVV.20203	ISO 20	Aluminium
SPVV.25203	ISO 25	Aluminium
SPVV.30203	ISO 31.5	Aluminium

Tech Sheet 20487

# HYDRAULIC QUICK RELEASE COUPLINGS



## PCJ5 Series, Ultra High Pressure Couplings

DNP standard, 15,000 psi/1,000 bar working pressure, high resistance steel, locking radial balls. Tested 100% with helium at low and high pressure. PCJ5 series is ideal for high pressure tools and torque equipment.

**Occlusion:** Poppet

**Locking:** Radial balls

**Material:** High resistance steel

**Finishing:** Zn-Fe (Cr III)

**Available Threads:** BSP, NPT

**Standard Seals:** Special compound

**Safety Factor:** 1:2.5

**Test:** with helium, 100% at low and high pressure

**Connection Under Pressure:** Not allowed

**Working Temperature:**  
-35°C to +130°C

**Maximum Working Pressure:**  
1000 bar



**Coupling, BSPP**

0457	Thread	ISO	Max Pressure Bar
PCJ5.0606.002	1/4"	6.3	1000
PCJ5.0610.002	3/8"	6.3	1000
Tech Sheet 20488			

**Coupling, NPT**

0457	Thread	ISO	Max Pressure Bar
PCJ5.0606.012	1/4"	6.3	1000
PCJ5.0610.012	3/8"	6.3	1000
Tech Sheet 20488			



**Plug, BSPP**

0457	Thread	ISO	Max Pressure Bar
PCJ5.0606.003	1/4"	6.3	1000
PCJ5.0610.003	3/8"	6.3	1000
Tech Sheet 20488			

**Plug, NPT**

0457	Thread	ISO	Max Pressure Bar
PCJ5.0606.013	1/4"	6.3	1000
PCJ5.0610.013	3/8"	6.3	1000
Tech Sheet 20488			

## PCJ6 Series, Ultra High Pressure Couplings

DNP standard, 21,780 psi/1,500 bar working pressure, high resistance steel, locking radial balls. Tested 100% with helium at low and high pressure. PCJ6 series is ideal for high pressure tools and torque equipment.

**Occlusion:** Poppet

**Locking:** Radial balls

**Material:** High resistance steel

**Finishing:** Zn-Fe (Cr III)

**Available Threads:** BSP, NPT

**Standard Seals:** Special compound

**Safety Factor:** 1:2.5

**Test:** with helium, 100% at low and high pressure

**Connection Under Pressure:** Not allowed

**Working Temperature:**  
-35°C to +130°C

**Maximum Working Pressure:**  
1500 bar



**Coupling, BSPP**

0457	Thread	ISO	Max Pressure Bar
PCJ6.0606.002	1/4"	6.3	1500
Tech Sheet 20489			

**Coupling, NPT**

0457	Thread	ISO	Max Pressure Bar
PCJ6.0606.012	1/4"	6.3	1500
Tech Sheet 20489			



**Plug, BSPP**

0457	Thread	ISO	Max Pressure Bar
PCJ6.0606.003	1/4"	6.3	1500
Tech Sheet 20489			

**Plug, NPT**

0457	Thread	ISO	Max Pressure Bar
PCJ6.0606.013	1/4"	6.3	1500
Tech Sheet 20489			

## PCJ5 Protection Caps & Plugs



**Plug for Coupling**

0457	To Suit	Material
SPCJ.06002	ISO 6.3	PVC
Tech Sheet 20488		



**Cap For Plug**

0457	To Suit	Material
SPCJ.06003	ISO 6.3	PVC
Tech Sheet 20488		

## PCJ6 Protection Caps & Plugs



**Plug for Coupling**

0457	To Suit	Material
SPCJ.06042	ISO 6.3	PVC
Tech Sheet 20489		



**Cap For Plug**

0457	To Suit	Material
SPCJ.06043	ISO 6.3	PVC
Tech Sheet 20489		

# HYDRAULIC QUICK RELEASE COUPLINGS



## PVS Series, ISO 14540 Screw Couplings

**Standard:** ISO 14540

**Occlusion:** Ball

**Locking:** Screw

**Material:** Steel

**Finishing:** Zn-Fe (Cr III)

**Threads:** BSP, NPT

**Standard Seals:** Nitrile

**Optional Seals:** Viton, EPDM

**Connection Under Pressure:**

Allowed (both male or female side)

**Maximum Residual Pressure:** 100 bar

**Working Temperature:**  
-25°C to +100°C

**Maximum Working Pressure:**  
700 bar



### Coupling, NPT

0457	Thread	ISO	Max Pressure Bar
PVS3.0606.022	1/4"	6.3	700
PVS3.1006.022	1/4"	10	700
PVS3.1010.022	3/8"	10	700

Tech Sheet 20490



### Plug, NPT

0457	Thread	ISO	Max Pressure Bar
PVS1.0606.013	1/4"	6.3	700
PVS1.1006.013	1/4"	10	700
PVS1.1010.013	3/8"	10	700

Tech Sheet 20490

## ISO 14540 Protection Caps & Plugs

### Cap for Plug



### Plug for Coupling



### Plug for Coupling

0457	To Suit	Material
SPVS.06100	ISO 6.3	Steel
SPVS.10100 C	ISO 10	Steel

Tech Sheet 20490

### Cap for Plug

0457	To Suit	Material
SPVS.06101	ISO 6.3	Steel
SPVS.10103 C	ISO 10	Steel

Tech Sheet 20490

## PFT1 Series, ISO 5676 Brake Couplings

**Standard:** ISO 5676

**Occlusion:** Flat face

**Locking:** Radial balls

**Material:** Steel

**Finishing:** Zn-Fe (Cr III)

**Threads:** BSP, SAE, metric

**Standard Seals:** Nitrile

**Optional Seals:** Viton, EPDM

**Connection Under Pressure:** not allowed

**Working Temperature:**  
-25°C to +100°C

**Maximum Working Pressure:**  
150 bar



### Coupling, Female Thread

0457	Thread	ISO	Max Pressure Bar
PFT1.1310.002	3/8"	12.5	150
PFT1.1313.002	1/2"	12.5	150
PFT1.1318.102	M18 x 1.5	12.5	150

Tech Sheet 20491



### Plug, Male Thread

0457	Thread	ISO	Max Pressure Bar
PFT3.1313.213	1/2"	12.5	150

Tech Sheet 20491

### Plug, Male Thread Bulkhead

0457	Thread	ISO	Max Pressure Bar
PFT3.1318.503	M18 x 1.5	12.5	150
PFT3.1322.503	M22 x 1.5	12.5	150

Tech Sheet 20491

For **RSB Hydraulic Tube Clamps**  
see pages **184-200**



# HYDRAULIC QUICK RELEASE COUPLINGS



## VFF1 Series, Wing Nut Screw Couplings

**Interchangeability:** Snap-Tite 78  
**Standard Seals:** Nitrile  
**Optional Seals:** Viton, EPDM  
**Connection Under Pressure:** Not suggested  
**Threads:** NPT  
**Material:** Brass and steel  
**Steel Finishing:** Zn-Fe (Cr III)

**Working Temperature:** -25°C to +100°C

**Maximum Working Pressure:** 210 bar



### Coupling, NPT

0457	Thread	ISO	Max Pressure Bar
VFF1.2013.012	1/2"	19	210
VFF1.2019.012	3/4"	19	210
VFF1.2525.012	1"	25	210
VFF1.3031.012	1.1/4"	31.5	190
VFF1.3939.012	1.1/2"	40	170

Tech Sheet 20492



### Plug, NPT

0457	Thread	ISO	Max Pressure Bar
VFF1.2013.013	1/2"	19	210
VFF1.2019.013	3/4"	19	210
VFF1.2525.013	1"	25	210
VFF1.3031.013	1.1/4"	31.5	190
VFF1.3939.013	1.1/2"	40	170

Tech Sheet 20492

## VFH1 Series, Wing Nut Screw Couplings

Wing style screw to connect, 5,000 psi/350 bar working pressure, heavy-duty design, high flow rate, heavy-duty acme threads. VFH1 series has a universal design that can be used in any industry, used frequently in oil field applications, applications needing high working pressures and high flow rates, oil field services such as coiled tubing units, snubbing units, power swivels and much more.

**Interchangeability:** Snap-Tite 75  
**Standard Seals:** Nitrile  
**Optional Seals:** Viton, EPDM  
**Connection Under Pressure:** Allowed (both male or female side)  
**Threads:** NPT  
**Material:** Steel  
**Steel Finishing:** Zn-Fe (Cr III)  
**Maximum Residual Pressure:** 100 bar

**Working Temperature:** -25°C to +100°C

**Maximum Working Pressure:** 350 bar



### Coupling, NPT

0457	Thread	ISO	Max Pressure Bar
VFH1.2019.012	3/4"	19	350
VFH1.2525.012	1"	25	350
VFH1.3031.012	1.1/4"	31.5	350
VFH1.3939.012	1.1/2"	40	350
VFH1.5051.012	2"	50	350

Tech Sheet 20493



### Plug, NPT

0457	Thread	ISO	Max Pressure Bar
VFH1.2019.013	3/4"	19	350
VFH1.2525.013	1"	25	350
VFH1.3031.013	1.1/4"	31.5	350
VFH1.3939.013	1.1/2"	40	350
VFH1.5051.013	2"	50	350

Tech Sheet 20493

## PVE1 Series, Screw Couplings

**Interchange:** Faster CVE  
**Standard Seals:** Nitrile  
**Optional Seals:** Viton, EPDM and more  
**Connection Under Pressure:** Not suggested  
**Occlusion:** Poppet  
**Locking:** Screw  
**Material:** Steel  
**Finishing:** Zn-Fe (Cr III)  
**Threads:** BSP

**Working Temperature:** -25°C to +100°C

**Maximum Working Pressure:** 350 bar



### Coupling, BSPP

0457	Thread	ISO	Max Pressure Bar
PVE1.2019.002	3/4"	19	350
PVE1.2525.002	1"	25	350

Tech Sheet 68223



### Plug, BSPP

0457	Thread	ISO	Max Pressure Bar
PVE1.2019.003	3/4"	19	350
PVE1.2525.003	1"	25	350

Tech Sheet 68223

## ISO 19 Protection Caps & Plugs



### Female Dust Plug

0457	To Suit	Material
SPVE.20202	ISO 19	Steel
SPVE.25202	ISO 25	Steel

Tech Sheet 68223



### Male Dust Cap

0457	To Suit	Material
SPVE.20203	ISO 19	Steel
SPVE.25203	ISO 25	Steel

Tech Sheet 68223

**VICKERS**  
by Danfoss

### Solenoid Operated Directional Valves

See section 1, pages 209-219



**VICKERS**  
by Danfoss

### Vane & Piston Pumps

See section 1, pages 221-225

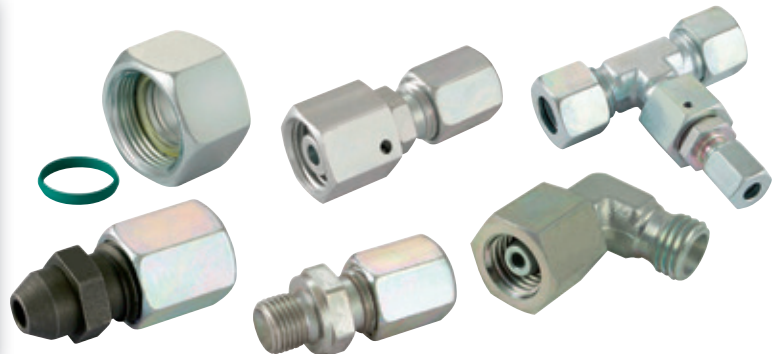


**Danfoss**

**Waltech**

### Component Parts

See section 1, pages 115-137





# HYDRAULIC COUPLINGS



## 6600 Series, ISO A Profil

° Working Temperature:  
-40°C to +110°C

• Nitrile Seals as Standard

Other seals  
available  
on request.



### Female Coupling, BSPP

0398	Thread	Max Pressure Bar
6603-4-4	1/4"	350
6603-6-6	3/8"	280
6603-8-10	1/2"	280
6603-12-12	3/4"	280
6603-16-16	1"	280

Tech Sheet 10676

### Female Plug, BSPP

0398	Thread	Max Pressure Bar
6605-4-4	1/4"	350
6605-6-6	3/8"	280
6605-8-10	1/2"	280
6605-12-12	3/4"	280
6605-16-16	1"	280

Tech Sheet 10676

Colour may vary



### Plug for Coupling

0398	To Suit
6659-6PL	3/8"
6659-8PL	1/2"
6659-12PL	3/4"
6659-16PL	1"

Tech Sheet 10676

Colour may vary



### Cap for Plug

0398	To Suit
6657-6PL	3/8"
6657-8PL	1/2"
6657-12PL	3/4"
6657-16PL	1"

Tech Sheet 10676

## 2000 Series, ISO A Profil

° Working Temperature:  
-25°C to +110°C

Colour may vary



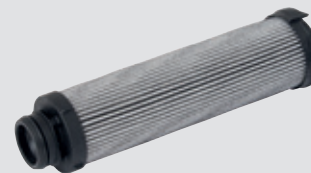
### Dust Protection

0398	Body	To Suit
5025-3PR	3/8"	Coupling
5029-3PR	3/8"	Plug
5205-4M	1/2"	Coupling
5209-4M	1/2"	Plug

Tech Sheet 10677



For **Parker Hydraulic Filtration**  
see page 247



# HYDRAULIC COUPLINGS



## 60 Series, ISO B Profil

Working Temperature:  
-40°C to +110°C

- Nitrile Seals as Standard

Other seals available on request.



### Female Coupling, Steel, BSPP

0398	Thread	Max Pressure Bar
H1-62-BSPP	1/8"	350
H2-62-BSPP	1/4"	350
H3-62-BSPP	3/8"	280
H4-62-BSPP	1/2"	280
H6-62-BSPP	3/4"	175
H8-62-BSPP	1"	140

Tech Sheet 10678

### Female Coupling, Brass, BSPP

0398	Thread	Max Pressure Bar
BH1-60-BSPP	1/8"	210
BH2-60-BSPP	1/4"	255
BH3-60-BSPP	3/8"	185
BH4-60-BSPP	1/2"	240
BH6-60-BSPP	3/4"	150
BH8-60-BSPP	1"	105

Tech Sheet 10678

### Female Coupling, 303 Stainless Steel, BSPP

0398	Thread	Max Pressure Bar
SH2-62-BSPP	1/4"	350
SH3-62-BSPP	3/8"	350
SH4-62-BSPP	1/2"	350
SH6-62-BSPP	3/4"	210
SH8-62-BSPP	1"	210

Tech Sheet 10678

### Female Coupling, Brass, NPT

0398	Thread	Max Pressure Bar
BH1-60	1/8"	210
BH2-60	1/4"	255
BH3-60	3/8"	185
BH4-60	1/2"	240
BH6-60	3/4"	150
BH8-60	1"	105

Tech Sheet 10678

### Female Coupling, 303 Stainless Steel, NPT

0398	Thread	Max Pressure Bar
SH2-62	1/4"	350
SH3-62	3/8"	350
SH4-62	1/2"	350
SH6-62	3/4"	210
SH8-62	1"	210

Tech Sheet 10678

### Female Plug, Steel, BSPP

0398	Thread	Max Pressure Bar
H1-63-BSPP	1/8"	350
H2-63-BSPP	1/4"	350
H3-63-BSPP	3/8"	280
H4-63-BSPP	1/2"	280
H6-63-BSPP	3/4"	175
H8-63-BSPP	1"	140

Tech Sheet 10678

### Female Plug, Brass, BSPP

0398	Thread	Max Pressure Bar
BH1-61-BSPP	1/8"	210
BH2-61-BSPP	1/4"	255
BH3-61-BSPP	3/8"	185
BH4-61-BSPP	1/2"	240
BH6-61-BSPP	3/4"	150
BH8-61-BSPP	1"	105

Tech Sheet 10678

### Female Plug, 303 Stainless Steel, BSPP

0398	Thread	Max Pressure Bar
SH2-63-BSPP	1/4"	350
SH3-63-BSPP	3/8"	350
SH4-63-BSPP	1/2"	350
SH6-63-BSPP	3/4"	210
SH8-63-BSPP	1"	210

Tech Sheet 10678

### Female Plug, Brass, NPT

0398	Thread	Max Pressure Bar
BH1-61	1/8"	210
BH2-61	1/4"	255
BH3-61	3/8"	185
BH4-61	1/2"	240
BH6-61	3/4"	150
BH8-61	1"	105

Tech Sheet 10678

### Female Plug, 303 Stainless Steel, NPT

0398	Thread	Max Pressure Bar
SH2-63	1/4"	350
SH3-63	3/8"	350
SH4-63	1/2"	350
SH6-63	3/4"	210
SH8-63	1"	210

Tech Sheet 10678



### Plug for Coupling

0398	To Suit	Material
H1-65	1/8"	Aluminium
H1-65M	1/8"	Rubber
H2-65	1/4"	Aluminium
H2-65M	1/4"	Rubber
H3-65	3/8"	Aluminium
H3-65M	3/8"	Rubber
H4-65	1/2"	Aluminium
H4-65M	1/2"	Rubber
H6-65	3/4"	Aluminium
H6-65M	3/4"	Rubber
H8-65	1"	Aluminium
H8-65M	1"	Rubber

Tech Sheet 10678



### Cap for Plug

0398	To Suit	Material
H1-66	1/8"	Aluminium
H1-66M	1/8"	Rubber
H2-66	1/4"	Aluminium
H2-66M	1/4"	Rubber
H3-66	3/8"	Aluminium
H3-66M	3/8"	Rubber
H4-66	1/2"	Aluminium
H4-66M	1/2"	Rubber
H6-66	3/4"	Aluminium
H6-66M	3/4"	Rubber
H8-66	1"	Aluminium
H8-66M	1"	Rubber

Tech Sheet 10678

# HYDRAULIC COUPLINGS



## QHPA Series

° Working Temperature:  
-25°C to +110°C

- Nitrile Seals as Standard

Other seals  
available  
on request.



### Male Coupling, DIN 2353 Thread

0398	Thread	Size	Max Pressure Bar	Body
QHPA53-D6X2-C	M14 x 1.5	8L	450	3/8"
QHPA53-D6X3-C	M14 x 1.5	10L	450	3/8"
QHPA53-D7X3-C	M14 x 1.5	10S	450	3/8"
QHPA53-D7X4-C	M14 x 1.5	12S	450	3/8"
QHPA54-D6X4-C	M14 x 1.5	12L	400	1/2"
QHPA54-D6X5-C	M14 x 1.5	15L	400	1/2"
QHPA54-D7X5-C	M14 x 1.5	14S	400	1/2"
QHPA54-D7X6-C	M14 x 1.5	16S	400	1/2"
QHPA56-D6X6-C	M14 x 1.5	18L	370	3/4"
QHPA56-D6X7-C	M14 x 1.5	22L	370	3/4"
QHPA56-D7X7-C	M14 x 1.5	20S	370	3/4"

Tech Sheet 10679

### Male Coupling, DIN 3852, BSPP

0398	Thread	Max Pressure Bar	Body
QHPA53-F4B3-C	3/8"	450	3/8"
QHPA54-F4B4-C	1/2"	400	1/2"

Tech Sheet 10679

### Male Plug, DIN 2353 Thread

0398	Thread	Size	Max Pressure Bar	Body
QHPA13-D6X2-C	M14 x 1.5	8L	450	3/8"
QHPA13-D6X3-C	M14 x 1.5	10L	450	3/8"
QHPA13-D7X3-C	M14 x 1.5	10S	450	3/8"
QHPA13-D7X4-C	M14 x 1.5	12S	450	3/8"
QHPA14-D6X4-C	M14 x 1.5	12L	400	1/2"
QHPA14-D7X5-C	M14 x 1.5	14S	400	1/2"
QHPA14-D7X6-C	M14 x 1.5	16S	400	1/2"
QHPA16-D6X6-C	M14 x 1.5	18L	370	3/4"
QHPA16-D6X7-C	M14 x 1.5	22L	370	3/4"
QHPA16-D7X7-C	M14 x 1.5	20S	370	3/4"

Tech Sheet 10679

### Male Plug, DIN 3852, BSPP

0398	Thread	Max Pressure Bar	Body
QHPA13-F4B3-C	3/8"	450	3/8"
QHPA14-F4B4-C	1/2"	400	1/2"

Tech Sheet 10679

## 3000 Series

° Working Temperature:  
-25°C to +110°C

- Maximum Working Pressure:  
700 bar



### Male Coupling, NPT

0398	Thread
3050-2	1/4"
3050-3	3/8"

Tech Sheet 10680

### Female Plug, NPT

0398	Thread
3010-2	1/4"
3010-3	3/8"

Tech Sheet 10680



### Dust Protection

0398	Body	To Suit
3005-2	1/4"	Coupling
3009-2	1/4"	Plug
3005-3	3/8"	Coupling
3009-3	3/8"	Plug

Tech Sheet 10680

## FF2500 Series

° Working Temperature:  
-30°C to +100°C

- Maximum Working Pressure:  
800 bar



### Female Coupling, BSPP

0398	Thread
FF2510	1/4"

Tech Sheet 10681

### Female Plug, BSPP

0398	Thread
FF2520	1/4"

Tech Sheet 10681

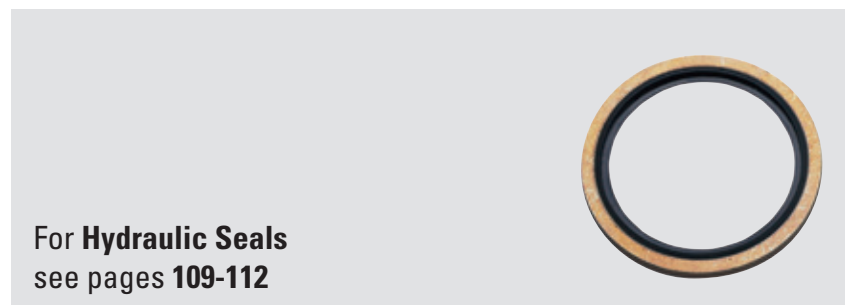
Colour may vary



### Dust Protection

0398	Body	To Suit
FF2516	1/4"	Coupling
FF2526	1/4"	Plug

Tech Sheet 10681



For Hydraulic Seals  
see pages 109-112

# HYDRAULIC COUPLINGS



## TDG Swivel Joints

**Description:** TDG swivel joints can be used in hydraulic systems where a rotating connection is required, for example in add-on units with rotational movements of up to 360°. TDG Swivel joints minimise the extreme wear occurring in the hoses of the hydraulic system.

A patented Pressure Relief Unit guarantees a long service life and smooth running even in the event of pressure hammers.



### DN6 Female Thread, BSPP

0071	Thread	Thread	Hex Size mm	Max Pressure Bar
TE-250	1/4"	3/8"	22	250
Tech Sheet 10009				



### DN11 Female Thread, BSPP

0071	Thread	Thread	Hex Size mm	Max Pressure Bar
TE-500	1/2"	3/4"	32	250
Tech Sheet 10009				

**Standard Version: Body: Brass, Nitrile Seal.**

**Advantages:** The housing is made of brass the rotating shaft is made so surface-treated steel or stainless steel. Sturdy construction with two needle roller bearings and an axis sliding bearing, adapted for combination with standardised hydraulic components. Has a maximum rotating speed 60 RPM.

**Applications:** Elevating mechanism, building machinery, materials handling technology and industrial plants.



### DN11 Male/Female Thread, BSPP

0071	Thread	Thread	Hex Size mm	Max Pressure Bar
TE-500 B	1/2"	1/2"	32	250
Tech Sheet 10009				



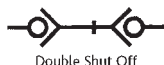
### DN17 Female Thread, BSPP

0071	Thread	Thread	Hex Size mm	Max Pressure Bar
TE-750	3/4"	1"	40	250
TE-750 RF	3/4"	1"	40	250
TE-1000	1"	1.1/4"	50	200
TE-1000 RF	1"	1.1/4"	50	200
Tech Sheet 10009				

## TFF5000/TFF7500/TFF10000 Series

**Working Temperature:**  
 -40°C up to +100°C (Nitrile)  
 -25°C up to +200°C (Viton)

**Maximum Static Working Pressure:**  
 Safety Factor 4:1



Double Shut Off



### TFF5000 Series Couplings, BSPP

0071	Thread	Max Pressure Bar	Seal	Operation
TE-TFF5010	1/2"	400	Nitrile	With valve
Tech Sheet 2000				

### TFF5000 Series Plugs, BSPP

0071	Thread	Max Pressure Bar	Seal	Operation
TE-TFF5020	1/2"	400	Nitrile	With valve
Tech Sheet 2000				

### TFF7500 Series Plugs, BSPP

0071	Thread	Max Pressure Bar	Seal	Operation
TE-TFF7520	3/4"	400	Nitrile	With valve
Tech Sheet 2000				

### TFF10000 Plugs with Pressure Eliminator, BSPP

0071	Thread	Max Pressure Bar	Seal	Operation
TE-TFF10021	1"	300	Nitrile	With valve
Tech Sheet 2000				

### TFF7500 Series Couplings, BSPP

0071	Thread	Max Pressure Bar	Seal	Operation
TE-TFF7510	3/4"	400	Nitrile	With valve
Tech Sheet 2000				

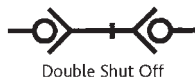
# HYDRAULIC COUPLINGS



## TIF2500/TIF3800/TIF5000 Series

° Working Temperature:  
-40°C to +100°C (Nitrile)

Maximum Static Working Pressure:  
Safety Factor 4:1



### TIF2500 Series Couplings, BSPP

0071	Thread	Body	Max Pressure Bar	Seal
TE-TIF2510	1/4"	1/4"	315	Nitrile
Tech Sheet 2001				

### TIF2500 Series Plug, BSPP

0071	Thread	Body	Max Pressure Bar	Seal
TE-TIF2520	1/4"	1/4"	315	Nitrile
Tech Sheet 2001				

### TIF3800 Series Couplings, BSPP

0071	Thread	Body	Max Pressure Bar	Seal
TE-TIF3810	3/8"	3/8"	250	Nitrile
TE-TIF3810-50	1/2"	3/8"	250	Nitrile
Tech Sheet 2001				

### TIF3800 Series Couplings with Pressure Eliminator, BSPP

0071	Thread	Body	Max Pressure Bar	Seal
TE-TIF3811	3/8"	3/8"	250	Nitrile
Tech Sheet 2001				

### TIF3800 Series Plugs, BSPP

0071	Thread	Body	Max Pressure Bar	Seal
TE-TIF3820	3/8"	3/8"	250	Nitrile
TE-TIF3820-50	1/2"	3/8"	250	Nitrile
Tech Sheet 2001				

### TIF3800 Series Plugs with Pressure Eliminator, BSPP

0071	Thread	Body	Max Pressure Bar	Seal
TE-TIF3821	3/8"	3/8"	250	Nitrile
Tech Sheet 2001				

### TIF5000 Series Couplings, BSPP

0071	Thread	Body	Max Pressure Bar	Seal
TE-TIF5010	1/2"	1/2"	250	Nitrile
TE-TIF5010 75	3/4"	1/2"	250	Nitrile
Tech Sheet 2001				

### TIF5000 Series Couplings with Pressure Eliminator, BSPP

0071	Thread	Body	Max Pressure Bar	Seal
TE-TIF5011	1/2"	1/2"	250	Nitrile
Tech Sheet 2001				

### TIF5000 Series Plugs, BSPP

0071	Thread	Body	Max Pressure Bar	Seal
TE-TIF5020	1/2"	1/2"	250	Nitrile
TE-TIF5020 75	3/4"	1/2"	250	Nitrile
Tech Sheet 2001				

### TIF5000 Series Plugs with Pressure Eliminator, BSPP

0071	Thread	Body	Max Pressure Bar	Seal
TE-TIF5021	1/2"	1/2"	250	Nitrile
Tech Sheet 2001				

## Dust Protection



### Plug for Coupling

0071	To Suit
TE-TIF3816	Series TIF3800
TE-TIF10016	Series TIF10000
Tech Sheet 71769	



### Cap for Plug

0071	To Suit
TE-TIF3826	Series TIF3800
TE-TIF10026	Series TIF10000
Tech Sheet 71769	

## T2300 Series

° Temperature Range:  
-40°C up to +100°C (Nitrile)  
-25°C up to +200°C (Viton)  
Depending on the medium



### Couplings, BSPP

0071	Thread	Max Pressure Bar	Seal	Operation
TE-2310	1/8"	200	Nitrile	With valve
TE-2310 UV	1/8"	200	Nitrile	No valve
TE-2310 V	1/8"	200	Viton	With valve
Tech Sheet 2003				

### Plugs, BSPP

0071	Thread	Max Pressure Bar	Seal	Operation
TE-2320	1/8"	200	Nitrile	With valve
TE-2320 UV	1/8"	200	-	No valve
TE-2320 V	1/8"	200	Viton	With valve
Tech Sheet 2003				

## T2500 Series

° Maximum Working Pressure:  
Maximum static working pressure with safety factor 4:1



### Couplings, BSPP

0071	Thread	Max Pressure Bar	Seal	Operation
TE-2510	1/4"	450	Nitrile	With valve
TE-2510 UV	1/4"	450	Nitrile	No valve
TE-2510 V	1/4"	450	Viton	With valve
TE-2510 RV	1/4"	250	Viton	With valve
Tech Sheet 2004				

### Plugs, BSPP

0071	Thread	Max Pressure Bar	Seal	Operation
TE-2520	1/4"	450	Nitrile	With valve
TE-2520 UV	1/4"	450	-	No valve
TE-2520 V	1/4"	450	Viton	With valve
TE-2520 RV	1/4"	250	Viton	With valve
Tech Sheet 2004				

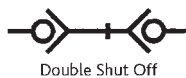
# HYDRAULIC COUPLINGS



## T3800 Series

**Working Temperature:**  
-40°C up to +100°C (Nitrile)  
-25°C up to +200°C (Viton)

**Maximum Working Pressure:**  
Maximum static working pressure  
with safety factor 4:1



### Couplings, BSPP

0071	Thread	Max Pressure Bar	Seal	Operation
TE-3810	3/8"	350	Nitrile	With valve
TE-3810 H	3/8"	350	Nitrile	No valve
TE-3810 UV	3/8"	350	Nitrile	No valve
TE-3810 HV	3/8"	350	Viton	No valve
TE-3810 V	3/8"	350	Viton	With valve
TE-3810 RV	3/8"	300	Viton	With valve

Tech Sheet 2005

### Couplings with Pressure Eliminator, BSPP

0071	Thread	Max Pressure Bar	Seal	Operation
TE-3811	3/8"	350	Nitrile	With valve
TE-3811 V	3/8"	350	Viton	With valve

Tech Sheet 2005

### Plugs, BSPP

0071	Thread	Max Pressure Bar	Seal	Operation
TE-3820	3/8"	350	Nitrile	With valve
TE-3820 UV	3/8"	350	-	No valve
TE-3820 V	3/8"	350	Viton	With valve
TE-3820 RV	3/8"	300	Viton	With valve
TE-3820 RUV	3/8"	300	-	No valve

Tech Sheet 2005

### Plugs with Pressure Eliminator, BSPP

0071	Thread	Max Pressure Bar	Seal	Operation
TE-3821	3/8"	350	Nitrile	With valve
TE-3821 V	3/8"	350	Viton	With valve
TE-3821 RV	3/8"	300	Viton	With valve

Tech Sheet 2005

## T5000 Series

**Working Temperature:**  
-40°C up to +100°C (Nitrile)  
-25°C up to +200°C (Viton)

**Maximum Working Pressure:**  
Maximum static working pressure  
with safety factor 4:1



### Couplings, BSPP

0071	Thread	Max Pressure Bar	Seal	Operation
TE-5010	1/2"	300	Nitrile	With valve
TE-5010 UV	1/2"	300	Nitrile	No valve
TE-5010 V	1/2"	300	Viton	With valve
TE-5010 RV	1/2"	300	Viton	With valve

Tech Sheet 2005

### Couplings with Pressure Eliminator, BSPP

0071	Thread	Max Pressure Bar	Seal	Operation
TE-5011	1/2"	300	Nitrile	With valve
TE-5011 V	1/2"	300	Viton	With valve
TE-5011 RV	1/2"	300	Viton	With valve

Tech Sheet 2005

### Plugs, BSPP

0071	Thread	Max Pressure Bar	Seal	Operation
TE-5020	1/2"	320	Nitrile	With valve
TE-5020 UV	1/2"	320	-	No valve
TE-5020 V	1/2"	320	Viton	With valve
TE-5020 RV	1/2"	300	Viton	With valve

Tech Sheet 2005

### Plugs with Pressure Eliminator, BSPP

0071	Thread	Max Pressure Bar	Seal	Operation
TE-5021	1/2"	320	Nitrile	With valve
TE-5021 V	1/2"	320	Viton	With valve
TE-5021 RV	1/2"	300	Viton	With valve

Tech Sheet 2005

### TEMA Coupling Letter Key

**NO Letter** = Standard, Nitrile seals with valve  
**H** = No valve and no locking sleeve, Nitrile seals  
**UV** = Standard Nitrile seals, unvalved  
**HV** = No valve and no locking sleeve, viton seals  
**V** = With valve and viton seals

**RV** = Stainless steel body with valve and viton seals  
**RUV** = Stainless steel body, unvalved with viton seals  
**VUV** = Unvalved with viton seals  
**S** = Super nipple, special steel alloy construction, high durability

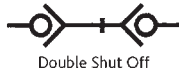
# HYDRAULIC COUPLINGS



## T7500 Series

**° Working Temperature:**  
-40°C up to +100°C (Nitrile)  
-25°C up to +200°C (Viton)

**Maximum Working Pressure:**  
Maximum static working pressure  
with safety factor 4:1



### Couplings, BSPP

0071	Thread	Max Pressure Bar	Seal	Operation
TE-7510	3/4"	280	Nitrile	With valve
TE-7510 UV	3/4"	280	Nitrile	No valve
TE-7510 V	3/4"	280	Viton	With valve
TE-7510 RV	3/4"	250	Viton	With valve
TE-7510 VUV	3/4"	280	Viton	No valve

Tech Sheet 2006

### Couplings with Pressure Eliminator, BSPP

0071	Thread	Max Pressure Bar	Seal	Operation
TE-7511	3/4"	280	Nitrile	With valve
TE-7511 V	3/4"	280	Viton	With valve

Tech Sheet 2006

### Plugs, BSPP

0071	Thread	Max Pressure Bar	Seal	Operation
TE-7520	3/4"	300	Nitrile	With valve
TE-7520 UV	3/4"	300	-	No valve
TE-7520 V	3/4"	300	Viton	With valve

Tech Sheet 2006

### Plugs with Pressure Eliminator, BSPP

0071	Thread	Max Pressure Bar	Seal	Operation
TE-7521	3/4"	300	Nitrile	With valve
TE-7521 V	3/4"	300	Viton	With valve

Tech Sheet 2006

### Super Plug to be Used for Very High Loads, BSPP

0071	Thread	Max Pressure Bar	Seal	Operation
TE-7520 S	3/4"	300	Nitrile	With valve

Tech Sheet 2006

## T10000 Series

**° Working Temperature:**  
-40°C up to +100°C (Nitrile)  
-25°C up to +200°C (Viton)

**Maximum Working Pressure:**  
Maximum static working  
pressure with safety factor 4:1



### Couplings, BSPP

0071	Thread	Max Pressure Bar	Seal	Operation
TE-10010	1"	250	Nitrile	With valve
TE-10010 V	1"	250	Viton	With valve

Tech Sheet 2006

### Couplings with Pressure Eliminator, BSPP

0071	Thread	Max Pressure Bar	Seal	Operation
TE-10011	1"	250	Nitrile	With valve

Tech Sheet 2006

### Plugs, BSPP

0071	Thread	Max Pressure Bar	Seal	Operation
TE-10020	1"	280	Nitrile	With valve
TE-10020 UV	1"	280	-	No valve
TE-10020 V	1"	280	Viton	With valve
TE-10020 RV	1"	250	Viton	With valve

Tech Sheet 2006

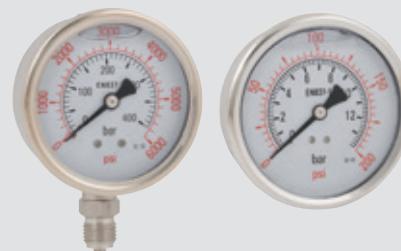
### Plugs with Pressure Eliminator, BSPP

0071	Thread	Max Pressure Bar	Seal	Operation
TE-10021	1"	280	Nitrile	With valve

Tech Sheet 2006



Customers who bought from this page also purchased  
**Glycerine Gauges**  
see page 264



# HYDRAULIC COUPLINGS



## T15000 Series

**Working Temperature:**  
-40°C up to +100°C (Nitrile)  
-25°C up to +200°C (Viton)

**Maximum Working Pressure:**  
Maximum static working pressure  
with safety factor 4:1



### Couplings, BSPP

0071	Thread	Max Pressure Bar	Seal	Operation
<b>TE-15010</b>	1.1/2"	200	Nitrile	With valve
<b>TE-15010 UV</b>	1.1/2"	200	Nitrile	No valve
<b>TE-15010 V</b>	1.1/2"	200	Viton	With valve
<b>TE-15010 VUV</b>	1.1/2"	200	Viton	No valve

Tech Sheet 2007

### Plugs, BSPP

0071	Thread	Max Pressure Bar	Seal	Operation
<b>TE-15020</b>	1.1/2"	200	Nitrile	With valve
<b>TE-15020 UV</b>	1.1/2"	200	-	No valve
<b>TE-15020 V</b>	1.1/2"	200	Viton	With valve

Tech Sheet 2007



## High Pressure Series

The TEMA High Pressure 1000 couplings were specially developed for use in industrial machinery, salvage devices and testing equipment. The Series is galvanised and produced in steel. They are provided with safety locking and dust caps inclusive.



### THP1000 Series Couplings, BSPP

0071	Thread	Hex Size mm	Max Pressure Bar	Length mm
<b>THP10104132</b>	1/4"	24	1000	59
<b>THP10104172</b>	3/8"	24	1000	59

Tech Sheet 10010

The TEMA High Pressure 1500 couplings were specially developed for use in bolt tensioning equipment. This series is produced in steel with the coupling body QPQ treated and black galvanised. They are provided with safety locking and dust caps inclusive.



### THP1500 Series Couplings, BSPP

0071	Thread	Hex Size mm	Max Pressure Bar	Length mm
<b>THP15104132</b>	1/4"	24	1500	59

Tech Sheet 10010



### THP1000 Series Plugs, BSPP

0071	Thread	Hex Size mm	Max Pressure Bar	Length mm
<b>THP1020413</b>	1/4"	22	1000	37
<b>THP1020417</b>	3/8"	24	1000	37

Tech Sheet 10010



### THP1500 Series Plugs, BSPP

0071	Thread	Hex Size mm	Max Pressure Bar	Length mm
<b>THP1520413</b>	1/4"	22	1500	38

Tech Sheet 10010

## Dust Protection Plugs



### Plug

0071	To Suit	Type
<b>TE-2516</b>	Series T2500	B
<b>TE-3816</b>	Series T3800	B
<b>TE-5016</b>	Series T5000	B
<b>TE-7516</b>	Series T7500	B
<b>TE-10016</b>	Series T10000	B
<b>THP16</b>	High Pressure Series	C

Tech Sheet 71770

## Dust Protection Caps



### Cap

0071	To Suit	Type
<b>TE-125</b>	Series T2300	C
<b>TE-2526</b>	Series T2500	B
<b>TE-3826</b>	Series T3800	B
<b>TE-5026</b>	Series T5000	B
<b>TE-7526</b>	Series T7500	B
<b>TE-10026</b>	Series T10000	B

Tech Sheet 71770

## Seal Kits



### Nitrile & Viton

0071	To Suit	Material
<b>TE-2500-PSN</b>	Series T2500	Nitrile
<b>TE-3800-PSN</b>	Series T3800	Nitrile
<b>TE-3800-PSV</b>	Series T3800	Viton
<b>TE-5000-PSN</b>	Series T5000	Nitrile
<b>TE-5000-PSV</b>	Series T5000	Viton
<b>TE-7500-PSN</b>	Series T7500	Nitrile
<b>TE-7500-PSV</b>	Series T7500	Viton
<b>TE-10000-PSN</b>	Series T10000	Nitrile
<b>TE-10000-PSV</b>	Series T10000	Viton

Tech Sheet 71771



# SERIES 70KB



## ULTRA-FLO »

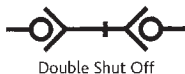
**Description:** The quick-connect-couplings series 71-76 are robust and simple models having best proven their quality for many years in many applications. Only couplings and plugs with the same size internal threads will match. These couplings are designed for manual operation, i.e. to couple the sleeve must be first pushed back

**Advantages:** The simple and robust design guarantees a maximum of safety.

**Ideal for Applications:** With liquids and in laboratory and food areas.

**Technical Data:** Only couplings and plugs of the same series will match.

 **Interchangeability:**  
Industrial interchange ISO 7241-1 Series B,  
BS 7198. Hansen 'HK'.



	RectuPom		Brass
<b>Working Temperature</b>	-20°C to +90°C		-20°C to +200°C
<b>Working Pressures:</b>	50°C (bar)	90°C (bar)	-20°C to +200°C (bar)
Series 71 1/8"	15	7.5	250
Series 72 1/4"	15	7.5	250
Series 73 3/8"	15	7.5	200
Series 74 1/2"	10	5	150
Series 75 3/4"	10	5	100
Series 76 1"	10	5	100

## Couplings



### RectuPom, BSPP

4605	Thread	Length mm
71KBIW10DPX	1/8"	49
72KBIW13DPX	1/4"	58
73KBIW17DPX	3/8"	64
74KBIW21DPX	1/2"	74
75KBIW26DPX	3/4"	96
76KBIW33DPX	1"	106

Tech Sheet 10011



### Brass, Viton Seals, BSPP

4605	Thread	Length mm
71KBIW10MVX	1/8"	49
72KBIW13MVX	1/4"	58
73KBIW17MVX	3/8"	64
74KBIW21MVX	1/2"	74
75KBIW26MVX	3/4"	96
76KBIW33MVX	1"	106

Tech Sheet 10011

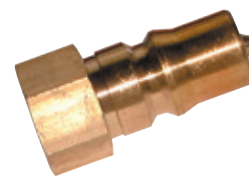
## Plugs



### RectuPom, BSPP

4605	Thread	Length mm
71SBIW10DPX	1/8"	30
72SBIW13DPX	1/4"	35
73SBIW17DPX	3/8"	39
74SBIW21DPX	1/2"	46
75SBIW26DPX	3/4"	60

Tech Sheet 10011



### Brass, Viton Seals, BSPP

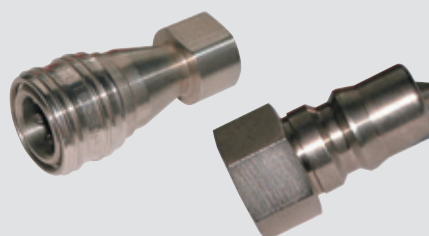
4605	Thread	Length mm
71SBIW10MVX	1/8"	30
72SBIW13MVX	1/4"	35
73SBIW17MVX	3/8"	39
74SBIW21MVX	1/2"	46
75SBIW26MVX	3/4"	60
76SBIW33MVX	1"	65

Tech Sheet 10011

Grade 316 available upon request



For **Series 70, Stainless Steel 303, Viton Seals, BSPP**  
see page 320



# H SERIES

## Steel Plated Couplings



### BSPP, Valved

0067	Thread	Max Pressure Bar
VHC4-4RP	1/4"	450
VHC6-6RP	3/8"	310
VHC8-8RP	1/2"	280
VHC12-12RP	3/4"	245
VHC16-16RP	1"	140
VHC20-20RP	1.1/4"	125
Tech Sheet 1336		

### BSPP, Unvalved

0067	Thread	Max Pressure Bar
PHC4-4RP	1/4"	760
PHC6-6RP	3/8"	760
PHC8-8RP	1/2"	760
PHC12-12RP	3/4"	625
PHC16-16RP	1"	415
PHC20-20RP	1.1/4"	345
Tech Sheet 1336		

## Steel Plated Plugs



### BSPP, Valved

0067	Thread
VHN4-4RP	1/4"
VHN6-6RP	3/8"
VHN8-8RP	1/2"
VHN12-12RP	3/4"
VHN16-16RP	1"
VHN20-20RP	1.1/4"
VHN24-24RP	1.1/2"
Tech Sheet 1336	

### BSPP, Unvalved

0067	Thread
PHN4-4RP	1/4"
PHN6-6RP	3/8"
PHN8-8RP	1/2"
PHN12-12RP	3/4"
PHN16-16RP	1"
Tech Sheet 1336	

## Brass Couplings



### BSPP, Valved

0067	Thread	Max Pressure Bar
BVHC4-4RP	1/4"	155
BVHC6-6RP	3/8"	155
BVHC8-8RP	1/2"	140
BVHC12-12RP	3/4"	140
BVHC16-16RP	1"	125
BVHC20-20RP	1.1/4"	25
BVHC24-24RP	1.1/2"	25
BVHC32-32RP	2"	30
Tech Sheet 1336		

### BSPP, Unvalved

0067	Thread	Max Pressure Bar
BPHC4-4RP	1/4"	280
BPHC6-6RP	3/8"	280
BPHC8-8RP	1/2"	280
BPHC12-12RP	3/4"	245
BPHC16-16RP	1"	210
BPHC24-24RP	1.1/2"	70
Tech Sheet 1336		

## Brass Plugs



### BSPP, Valved

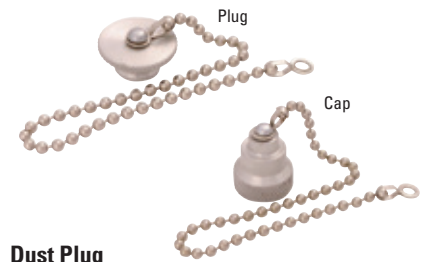
0067	Thread
BVHN4-4RP	1/4"
BVHN6-6RP	3/8"
BVHN8-8RP	1/2"
BVHN12-12RP	3/4"
BVHN16-16RP	1"
BVHN20-20RP	1.1/4"
BVHN24-24RP	1.1/2"
BVHN32-32RP	2"
Tech Sheet 1336	

### BSPP, Unvalved

0067	Thread
BPHN4-4RP	1/4"
BPHN6-6RP	3/8"
BPHN8-8RP	1/2"
BPHN12-12RP	3/4"
BPHN16-16RP	1"
BPHN32-32RP	2"
Tech Sheet 1336	



## H Series Aluminium Dust Protection



### Dust Plug

0067	To Suit
AMPH-8	1/2"
AMPH-16	1"
AMPH-20	1.1/4"
AMPH-24	1.1/2"
AMPH-32	2"
Tech Sheet 1336	

### Dust Cap

0067	To Suit
ADCH-4	1/4"
ADCH-6	3/8"
ADCH-16	1"
ADCH-20	1.1/4"
ADCH-32	2"
Tech Sheet 1336	

## H Series Plastic Dust Protection



### Cap & Plug

0067	To Suit
PDCP-4	1/4"
PDCP-6	3/8"
Tech Sheet 1336	

For H Series,  
**316 Stainless Steel**  
 Couplings and Plugs  
 see page 320



# SERIES 71



The Series 71 has been designed to eliminate fluid loss and air inclusion. The dirt tolerant, heavy-duty construction withstands abusive treatment.

## Couplings

### Flush Face/Dry Break Steel Valved, BSPP



0067	Thread	Max Pressure Bar
71-3C4-4RP	1/4"	690
71-3C6-6RP	3/8"	690
71-3C8-8RP	1/2"	690
71-3C12-12RP	3/4"	520
71-3C16-16RP	1"	520

Tech Sheet 612

## Plugs

### Flush Face/Dry Break Steel Valved, BSPP



0067	Thread
71-3N4-4RP	1/4"
71-3N6-6RP	3/8"
71-3N8-8RP	1/2"
71-3N12-12RP	3/4"
71-3N16-16RP	1"

Tech Sheet 612



For **Pneumatic Valves & Accessories**  
see page **564**



# SERIES 75



Series 75 is designed and constructed for high pressure hydraulic service. Although these couplings are used in a broad variety of heavy-duty applications.

A primary usage is in oil fields and offshore drilling, cranes, power tongs and swivels, diving etc.

## Thread to Connect Couplings

### Steel Valved, BSPP



0067	Thread	Max Pressure Bar
75C12-12RP	3/4"	345
75C16-16RP	1"	345
75C20-20RP	1.1/4"	345
75C24-24RP	1.1/2"	345

Tech Sheet 615

## Thread to Connect Plugs

### Steel Valved, BSPP



0067	Thread
75N12-12RP	3/4"
75N16-16RP	1"
75N20-20RP	1.1/4"
75N24-24RP	1.1/2"

Tech Sheet 615

## Metal Dust Plug & Dust Cap

### Dust Plug

0067	To Suit
75MDP-12	3/4"
75MDP-16	1"
75MDP-20	1.1/4"
75MDP-24	1.1/2"
75MDP-32	2"

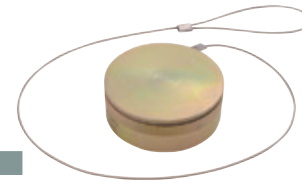
Tech Sheet 615



### Dust Cap

0067	To Suit
75MDC-12	3/4"
75MDC-16	1"
75MDC-20	1.1/4"
75MDC-24	1.1/2"
75MDC-32	2"

Tech Sheet 615



## SERIES 70KB

### ULTRA-FLO »»»

**Description:** The quick-connect-couplings Series 71-76 are robust and simple models having best proven their quality for many years in many applications. Only couplings and plugs with the same size internal threads will match. These couplings are designed for manual operation, i.e. to couple the sleeve must be first pushed back.

**Advantages:** The simple and robust design guarantees a maximum of safety.

**Ideal for Applications:** With liquids and in laboratory and food areas.

**Technical Data:** Only couplings and plugs of the same series will match.



#### Interchangeability:

Industrial interchange ISO 7241-1 Series B,  
BS 7198. Hansen 'HK'.

#### Stainless Steel 303, Viton Seals, BSPP

4605	Thread	Length mm
71KBIW10RVX	1/8"	49
72KBIW13RVX	1/4"	58

Tech Sheet 10011



Double Shut Off



Working Temperature	Stainless Steel 303	
	-20°C to +200°C	
Working Pressures:	50°C (bar)	200°C (bar)
	Series 71 1/8"	250
Series 72 1/4"	250	190
Series 73 3/8"	250	190
Series 74 1/2"	250	190
Series 75 3/4"	160	120
Series 76 1"	100	75

#### Stainless Steel 303, Viton Seals, BSPP

4605	Thread	Length mm
71SBIW10RVX	1/8"	30
72SBIW13RVX	1/4"	35

Tech Sheet 10011



## H SERIES

### 316 Stainless Steel Couplings

#### BSPP, Valved

0067	Thread	Max Pressure Bar
SVHC4-4RP	1/4"	345
SVHC6-6RP	3/8"	280
SVHC8-8RP	1/2"	260
SVHC12-12RP	3/4"	140
SVHC16-16RP	1"	140
SVHC24-24RP	1.1/2"	105
SVHC32-32RP	2"	35

Tech Sheet 1336



#### BSPP, Unvalved

0067	Thread	Max Pressure Bar
SPHC4-4RP	1/4"	690
SPHC6-6RP	3/8"	555
SPHC8-8RP	1/2"	555
SPHC12-12RP	3/4"	485

Tech Sheet 1336

### 316 Stainless Steel Plugs

#### BSPP, Valved

0067	Thread
SVHN4-4RP	1/4"
SVHN6-6RP	3/8"
SVHN8-8RP	1/2"
SVHN12-12RP	3/4"
SVHN16-16RP	1"
SVHN20-20RP	1.1/4"
SVHN24-24RP	1.1/2"
SVHN32-32RP	2"

Tech Sheet 1336



#### BSPP, Unvalved

0067	Thread
SPHN4-4RP	1/4"
SPHN6-6RP	3/8"
SPHN8-8RP	1/2"
SPHN12-12RP	3/4"
SPHN16-16RP	1"
SPHN24-24RP	1.1/2"
SPHN32-32RP	2"

Tech Sheet 1336

## SERIES 71

The Series 71 has been designed to eliminate fluid loss and air inclusion. The dirt tolerant, heavy-duty construction withstands abusive treatment.

#### Flush Face/Dry Break 316 Valved, BSPP

0067	Thread	Max Pressure Bar
S71-3C4-4RP	1/4"	345
S71-3C6-6RP	3/8"	345
S71-3C8-8RP	1/2"	345
S71-3C12-12RP	3/4"	345
S71-3C16-16RP	1"	280

Tech Sheet 612



#### Flush Face/Dry Break 316 Valved, BSPP

0067	Thread
S71-3N4-4RP	1/4"
S71-3N6-6RP	3/8"
S71-3N8-8RP	1/2"
S71-3N12-12RP	3/4"
S71-3N16-16RP	1"

Tech Sheet 612



stainless  
steel



stainless  
steel



stainless  
steel

