

**1** Hydraulics **3-284**

**2** Hydraulic Quick Release Couplings **285-320**

**3** Pneumatic Quick Release Couplings **321-406**

**4** Monitor & Test **407-446**

**5** Pneumatic & Vacuum **447-762**

**6** Push-in Fittings & Tubing **763-918**

**7** Valves & Actuation **919-1060**

**8** Ring Main **1061-1136**

**9** Hose Tails, Adaptors, Fittings & Manifolds **1137-1224**

**10** Stainless Steel **1225-1332**

**11** Malleable Iron **1333-1398**

**12** Hose, Couplings, Ducting & Hose Reels **1399-1510**

**13** Clips & Clamps **1511-1558**

**14** Paint, Sprays & Adhesives **1559-1590**

**15** Blow Guns, Vacuum & Nozzles **1591-1616**

**16** Fuelling, Lubrication, Wash Down & Misting **1617-1696**

**17** Compressors & Air Tools **1697-1726**

**18** Hand Tools & PPE **1727-1765**

# SECTION 18

## Hand Tools & PPE

---

**18.01** Hand Tools **1727-1749**

---

**18.02** PPE & Safeguarding Equipment **1750-1765**

---

## 18.01 Hand Tools

- Industrial Grade Hand Tools
- Torches Work Lamps & Lighting
- Professional Tools
- Interchangeable Storage & Display System



**Redashe**

1727-1749



## 18.02 PPE & Safeguarding Equipment

- PPE & Safeguarding Equipment
- Industrial Cleaning Equipment
- Engineering Consumables



1750-1765



# Industrial Grade Hand Tools

# TOTAL

Tools designed for ergonomic comfort, ease of use and manufactured to last

- Contoured for effortless performance with textured hard-wearing rubber for an incredibly comfortable grip
- Rigorous testing ensures a superior quality tool every time
- Exceptional quality, competitively priced
- Once you use Total Tools, no other brand will compare

## Cutting & Grinding



### Wire Cup Brush, 100mm

0455	Wire Diameter mm	Thread
TAC31041	0.3	M14 x 2



### Twist Wire Cup Brush, 100mm

0455	Wire Diameter mm	Thread
TAC32041	0.5	M14 x 2



### Turbo Diamond Disc Wet & Dry Cut

0455	Diameter mm
TAC2131151	115

## Drill Accessories



### M2 HSS Individual Drill Bits

0455	Diameter mm	Total Length mm	Useable Length mm
TAC110401	4	75	43
TAC110601	6	93	57
TAC111001	10	133	87
TAC111201	12	151	101
TAC111301	13	151	101

- 6 x HSS twist drill bits, 2, 3, 3.5, 4, 5 and 6mm
- 4 x masonry drill bits, 4, 5, 6 and 8mm
- 6 x 25cm screwdriver bits, SL4.5, SL5.5, PH1, PH2, PZ1 and PZ2
- Packed in a double blister



### Drill & Screwdriver Bits Box Set, 16 Pieces

0455	Size mm
TACSD3165	2-6

- 19 x HSS Twist Drill bits: 1, 1.5, 2, 2.5, 3, 3.5, 4, 4.5, 5, 5.5mm, 6, 6.5, 7, 7.5, 8, 8.5, 9, 9.5 and 10mm.
- Packed in a plastic box



### 19 Piece HSS DIN 338 Twist Drill Bits Set

0455	Size mm
TACSD0195	1-10

- 6 x metal drill bits: 2, 3, 4, 5, 6, 8mm
- Packed in a plastic box



### 6 Piece HSS DIN 338 Twist Drill Bits Set

0455	Size mm
TACSD0065	2-8

- 5 x SDS PLUS Drill bits: 6 x 110mm, 8 x 110mm, 10 x 110mm, 10 x 160mm and 12 x 160mm.
- Packed in a plastic box



### 5 Piece Hammer SDS Drill Bits Set

0455	Size mm
TAC190501	6 x 110 to 12 x 160

- 5 x Masonry Drill bits: 5 x 85mm, 6 x 100mm, 6.5 x 120mm, 8 x 120mm, 10 x 120mm
- Packed in a plastic box



### 5 Piece Masonry Drill Bits Set

0455	Size mm
TACSD5051	5 x 85 to 10 x 120

# INDUSTRIAL GRADE HAND TOOLS

# TOTAL

## Jig Saw Blades

- Metal Progressive HSS Wavy set.
- 5 x for Metal
- 12 TPI



### Metal Jig Saw Blade Set, 5 Pieces

0455  
TACS1118B

- Metal Fast cut HSS Wavy set.
- 2 x for Wood 8 TPI, 2 x for Metal 12 TPI, 2 x for Aluminium 8 TPI.



### Assorted Jig Saw Blade Set, 5 Pieces

0455  
TACS1051

## Hole Saw Set

- Sizes: 20, 22, 25, 32, 35, 38, 44, 48 and 50mm
- 2 piece hole saw arbours
- Supplied in a strong aluminium case



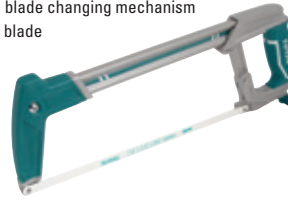
### Bi-metal, 12 Pieces

0455  
TACSH1121

Size mm
20-50

## Hacksaws

- Material: heavy-duty steel frame, aluminium/ABS/TPR handle
- Strong and comfortable with adjustable tension
- Quick release blade changing mechanism
- 1 x 65Mn saw blade



### Heavy-duty

0455  
THT54106

Frame Size
12"

- Length: 12" (300mm)
- Adjustable handle frame with soft grip
- 1 x 65Mn saw blade
- Supplied on paper card



### Standard

0455  
THT54166

Frame Size
12"

## Saw



### 12" Back Saw

0455  
THT59126B

TPI
11

- Size: 300 x 140 x 80
- Thickness: 20mm
- 1 piece back saw
- Size: 300mm/12" - 11 TPI



### Mitre Box & Back Saw Set

0455  
THT59126

- Size: 20" / 500mm.
- Material: Taiwan SK57TPI, Heat treated teeth.
- Triple teeth (precision ground on 3 edges).
- Two colour soft grip handle.

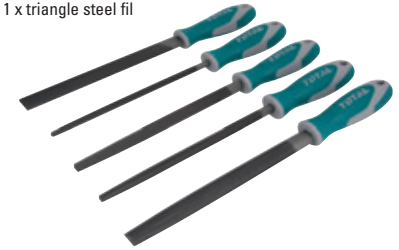


### 20" Hand Saw

0455  
THT55206D

## Files

- Length: 8" (200mm)
- 1 x flat steel fi
- 1 x half round steel fil
- 1 x round steel fil
- 1 x triangle steel fil
- 1 x square steel fil
- Material: T12 steel
- Packed in a double blister



### File Set, 5 Pieces

0455  
THT918516

Length
8"



### File Set, 6 Pieces

0455  
THT91462

Size
6"

## Riveter

- Length: 10.5"
- Rivet sizes: 2.4, 3.2, 4.0 and 4.8mm
- Material: Aluminium alloy body



### Hand Riveter

0455  
THT32105

## Wire Brush



0455  
THT92102

Length mm
250

# INDUSTRIAL GRADE HAND TOOLS

# TOTAL

18.01 Hand Tools

## Cutting Tools

- Length: 185mm
- 6 x SK5 blades
- Blade locking bolt
- Flat push button
- Material: aluminium body
- Net weight: 220g
- Packed in a double blister



### Snap Off Blade Knife

0455	Blade Size mm
TG5121806	18 x 100

- 6 x SK5 blades
- Material: zinc alloy shell
- Net weight: 256g
- Packed in a double blister



### Utility Knife

0455	Blade Size mm
TG5126101	19 x 61

- 15 Functions**
- 1 x large knife
  - 1 x can opener
  - 1 x Phillips screwdriver
  - 1 x leather punch
  - 1 x bottle opener
  - 1 x scissors
  - 1 x needle
  - 1 x slotted screwdriver
  - 1 x fish scale
  - 1 x hook remover
  - 1 x saw
  - 1 x corkscrew
  - 1 x nail cleaner
  - 1 x nail fil
  - 1 x key ring
  - Strong aluminium handle
  - Length: 9.5cm
  - Packed on a plastic hanger



### Multifunction Knife

0455	
THMFK0156	



### Folding Knife

0455	Blade Size mm
THT513613	19 x 61

## Aviation Snips

- Material: carbon steel
- Supplied on a plastic hanger



### Right Handed

0455	Length
THT523106	10"

- Material: carbon steel
- Supplied on a plastic hanger



### Straight

0455	Length
THT522106	10"

## Pliers

- Length: 8" (200mm)
- Material: Cr-V
- Supplied on a plastic hanger



### Wire Stripping Pliers

0455	Length
THT25616	6"

## Pipe Cutters

- Material: aluminium
- Packed in a double blister
- Length: 210mm



### Basic PVC Pipe Cutter

0455	Range mm
THT53351	3-35

- Material: aluminium
- Packed in a double blister



### PVC Pipe Cutter, Automatic Opening

0455	Range mm
THT53422	3-42



### Copper & Aluminium Pipe Cutter

0455	Range mm
THT53321	3-32

## Cable Cutters

- Length: 6" (154mm)
- Material: Carbon Steel



### 6" Cable Cutter

0455	Length
THT11561	6"

- Length: 10" (254mm)
- Material: carbon steel
- Packed in a half double blister



### Heavy-duty Cable Cutter

0455	Length
THT115102	10"

- Blades Material: 65Mn
- Used for cutting copper and aluminium cable
- Not for cutting ACSR, wire rope, steel or self-supporting strand
- Cutting Area: 450mm<sup>2</sup>
- Body heat treatment, cutting edges induction quenched



### Comfortable Rubber Handle



### Cable Cutter 36"

0455	Length
THT115242	24"
THT115362	36"

- Cr-V blade
- Black finish and polis
- TPR two colour handle



### Comfortable Rubber Handle



### Bolt Cutter 42"

0455	Description
THT113426	Cr-V 42"

Hand Tools & PPE

# INDUSTRIAL GRADE HAND TOOLS

# TOTAL

## Bolt Cutters

- Length: 8" (200mm)
- Material: Cr-V



### 8" Mini Bolt Cutter

0455	Length
THT11386	8"

- Length: 14" (355mm)
- Material: Cr-V



### 14" Bolt Cutter

0455	Length
THT113146	14"

- Material: Cr-V
- Supplied in a poly bag



### 24" Bolt Cutter

0455	Length
THT113246	24"

## Wrecking Bar



### 48" Wrecking Bar

0455	Size mm
THT431482	1200 x 29 x 15

## Sledge Hammer



0455	Description
THT750416	10lb Sledge Hammer

## Hammers

- Drop forged head and fibreglass handle



### Machinist Hammer

0455	Gram
THT715006	500

- Dropped forged head and fibreglass handle



### Stoning Hammer

0455	Gram
THT7215006	1500

- Drop forged head and fibreglass handle



### All Steel Claw Hammer

0455	Weight
THT7143166	16oz/450g

- Drop forged head and fibreglass handle



### Ball Pein Hammer

0455	Weight
THT74246	24oz/660g

- Fibreglass handle



### Rubber Mallet

0455	Weight
THT761616	16oz/450g

- Rubber head with fibreglass handle



### Dual Rubber & Plastic Hammer

0455	Size mm
THT77406	40

- Weight: 2lb
- Non-rebounding
- Non-marring plastic faces
- Non-spark



### Dead Blow Mallet

0455	Description
THT79021	2lb Dead Blow Mallet

## Chisels

- Material: Cr-V
- Blade width: 6, 12, 19 and 25mm



### Wood Chisel Set, 4 Pieces

0455	Size mm
THT41K0401	6, 12, 19 & 25

## High Leverage Pliers

- 1 x 8" (200mm) combination pliers
- 1 x 7" (180mm) diagonal cutting pliers
- 1 x 6" (154mm) long nose pliers
- Material: Cr-V
- Supplied on a plastic hanger



### Combination Plier Set, 3 Pieces

0455	Length
THT2K0301S	

- Length: 7" (180mm)
- Material: Cr-V
- Saving 30% strength against standard pliers
- Supplied on a plastic hanger



### Combination Pliers

0455	Length
THT210706S	7"
THT210906S	9"

- Length: 8" (200mm)
- Material: Cr-V
- Supplied on a plastic hanger



### 8" Combination Pliers

0455	Length
THT210806	8"

- Length: 6" (154mm)
- Material: Cr-V
- Supplied on a plastic hanger



### Long Nose Pliers

0455	Length
THT220606	6"

- Length: 8" (200mm)
- Material: Cr-V
- Supplied on a plastic hanger



### Long Nose Pliers

0455	Length
THT220806S	8"

- Length: 7" (180mm)
- Material: Cr-V
- Supplied on a plastic hanger



### Cutting Pliers

0455	Length
THT230706	7"

## Pliers

- Length: 6" (154mm)
- Material: Cr-V
- Supplied on a plastic hanger



### End Cutting Pliers

0455	Length
THT260606	6"

- Length: 8" (200mm) and 10" (254mm)
- Material: Cr-V
- Supplied on a plastic hanger



### Rabbit Pliers

0455	Length
THT2881	8"
THT28101	10"

- Length: 6" (154mm)
- Material: Cr-V
- Supplied on a plastic hanger



### Carpenters Pliers

0455	Length
THT290801	8"

- Length: 6" (152mm)
- Material: Cr-V
- Supplied on a plastic hanger



### Bent Nose Pliers

0455	Length
THT24616	6"

- Length: 10" (254mm)
- Material: Cr-V
- Supplied on a plastic hanger



### Pump Pliers

0455	Length
THT281006	10"

- Material: Cr-V nickel plated
- Packed in a half double blister



### Curved Jaw Locking Pliers

0455	Length
THT191001	10"

- Material: Cr-V nickel plated
- Supplied on a plastic hanger



### Straight Jaw Pliers

0455	Length
THT191002	10"

- Length: 10" (254mm)
- With sharp edge for cutting and push down wire function
- Will strip 6 wire sizes and 5 copper screw sizes
- Supplied on sliding card



### Wire Stripping Pliers

0455	Length
THT15101	10"

# INDUSTRIAL GRADE HAND TOOLS

# TOTAL

## Wrenches

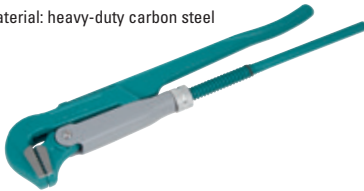
- Supplied on a plastic hanger
- 6" adjustable clamp size diameter 0-24mm
- 8" adjustable clamp size diameter 0-30mm
- 10" adjustable clamp size diameter 0-35mm
- 12" adjustable clamp size diameter 0-41mm



### Adjustable Wrenches

0455	Length
THT101066	6"
THT101086	8"
THT101106	10"
THT101126	12"

- Material: heavy-duty carbon steel



### 90° Swedish Pipe Wrenches

0455	Description
THT172011	1"
THT172021	2"

## Screwdrivers

- Material: Nickel plated
- 10 piece set: PH2 and SL6.0 (65mm)
- Supplied in a plastic box



### Double Ended Bits Set, 10 Pieces

0455
TAC16HL133

- PH1, PH2, PH3, SL4.0, SL5.5, SL6.5, PZ1, PZ2
- 1 x magnetic bit holder with quick release
- Material: S2 industrial steel, magnetic



### Screwdriver Set, 9 Pieces complete with Bit Holder

0455
TACSD3091

- Body material: ductile cast iron



### Pipe Wrenches

0455	Length	Max. Clamping Diameter mm
THT170806	8"	27
THT171206	12"	42
THT171186	18"	60
THT171246	24"	76
THT171366	36"	85
THT171486	48"	110

- 1 piece double open end wrench: 9-14mm, 15-22mm
- 1 piece single open end wrench, 23-32mm
- Chrome plated
- TPR two colour handle



### Bent Wrench Set (2 Pieces)

0455	Length
THT10309328	2 Piece Bent Wrench Set

- Size: 10"/250mm.
- Clamping diameter: 14-40mm.
- Carbon steel.
- Black finish and polish
- Packed by poly bag.



### Ratcheting Pipe Wrench 10"

0455	Length mm
THT171102	14-40

- Size: 14"/350mm.
- Clamping diameter: 18-52mm.
- Carbon steel.
- Black finish and polish
- Packed by poly bag.

### Ratcheting Pipe Wrench 14"

0455	Length mm
THT171142	18-52

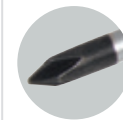
- Material: Cr-V
- Size: 3/6mm, 6/8mm, 8/11mm, 11/14mm, and 14/18mm
- Supplied in a plastic box



### Screw Extractor, 5 Pieces

0455
TACSE0051

- Material: Cr-V



### Phillips Head

0455	Size	Diameter mm	Length mm
THT22386	PH2	6	38



## Screwdrivers

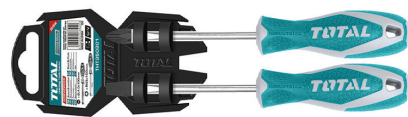
- Material: S2 industrial steel



### Go-thru Screwdriver, Slotted Head

0455	Size mm	Length mm
THTGTS8200	8.0	200

- Material: Cr-V
- 1 x SL6.5 - 6" (125mm)
- 1 x Phillips PH2 - 6" (125mm)
- Supplied on a plastic hanger



### Screwdriver Set, 2 Pieces

0455
THT250201

- Material: Cr-V
- 1 x SL5.5 (75mm) 1 x SL5.5 (100mm) 1 x SL6.5 (150mm)
- 1 x PH1 (75mm) 1 x PH1 (100mm) and 1 x PH2 (150mm)
- Supplied on a hanger card



### Screwdriver Set, 6 Pieces

0455
THT250606

- Ergonomic comfort-grip handle
- SL2.0 x 50, SL2.5 x 50, SL3.0 x 50, PH00 x 50, PH0 x 50, T6 x 50, T8 x 50
- Material: Cr-V



### Precision Screwdriver Set, 7 Pieces

0455
THT250726

- Material: Cr-V
- 1 x SL3.0 (75mm), 1 x SL5.5 (100mm), 1 x SL6.5 (150mm)
- 1 x SL6.5 (38mm), 1 x PH0 (75mm), 1 x PH1 (75mm), 1 x PH2 (125mm) and 1 x PH2 (38mm)
- Supplied on a hanger card



### Screwdriver Set, 8 Pieces

0455
THT250608

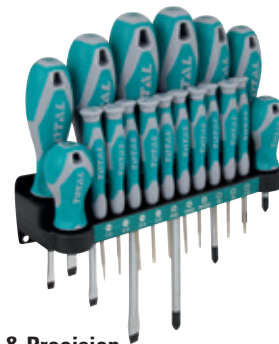
- Material: Cr-V
- 1 x SL3.0 (75mm), 1 x SL4.0 (100mm), 1 x SL5.5 (125mm), 1 x SL6.5 (150mm), 1 x SL8.0 (200mm), 1 x SL6.5 (38mm), 1 x PH0 (60mm), 1 x PH1 (80mm), 1 x PH2 (100mm) and 1 x PH3 (150mm)
- Supplied on a hanger card



### Screwdriver Set, 10 Pieces

0455
THT250610

- 8 piece screwdrivers:**
  - SL5.5 (75mm), SL6.5 (100mm), SL8.0 (150mm), SL6.5 (38mm), PH1 (75mm), PH2 (100mm), PH3 (150mm) and PH2 (38mm)
- 10 piece precision screwdrivers:**
  - SL1.5 x 50, SL2 x 50, SL2.5 x 50, SL3 x 50, PH000 x 50, PH00 x 50, PH0 x 50, T6 x 50, T8 x 50 and T10 x 50
- Supplied in a blow moulded case



### Screwdriver & Precision Screwdriver Set, 18 Pieces

0455
THT250618

# INDUSTRIAL GRADE HAND TOOLS

# TOTAL

## Screwdrivers

- 1000V VDE
- Material: Cr-V



### Insulated Screwdriver, Slotted Head

0455	Size mm	Length mm
<b>THTIS4100</b>	4.0	100
<b>THTIS5125</b>	5.5	125

- 6 pieces insulated screwdriver set:  
1 x SL3.0 (75mm), 1 x SL4.0 (100mm), 1 x SL6.5 (150mm),  
1 x PH0 (60mm), PH1 (80mm), PH2 (100mm)
- Aluminium frame
- Round shank



### Insulated Screwdriver Set, 6 Pieces

0455  
**THTIS566**

- Folding Handle,
- High quality ratchet mechanism.
- 12 pieces 6.35 to 25mm Screwdriver bits.
- Size: SL4, SL5, SL6, SL7, PH0



### 13 in 1 Ratchet Screwdriver Set

0455	Description
<b>TACSD30136</b>	13 in 1 Ratchet Set

- Material: Cr-V
- 1 x Ratchet Holder,
- 18 x 65mm Screwdriver bit: PH0, PH1, PH2, PH3, PZ1, PZ2, PZ3, SL3, SL4, SL5, SL6, SL7, T10, T15, T20, T25, T27 and T30
- Sockets: 5mm, 6mm, 7mm, 8mm, 9mm and 10mm
- Supplied in a bag and double blister



### Screwdriver & Bit Set, 26 Pieces

0455  
**TACSD30266**

- 1 x 7 in 1 unique design industrial ratchet handle
- 20 x 6.35 x 25mm screwdriver bits, SL3, SL4, SL5, SL6 x 2, PH0, PH1, PH2, PH3, PZ1, PZ2, T10, T15, T20, T25, T30, HEX3, HEX4, HEX5
- 1 x 4-6mm (25mm) bits adaptor
- 9 x 1/4" x 20.5mm sockets, 4, 5, 6, 7, 8, 9, 10, 11 and 12mm
- 1 x 125mm strong magnetic bits holder
- 1 x 75mm strong magnetic bits holder
- Supplied in a plastic box



### Screwdriver & Bit Set, 33 Pieces

0455  
**TACSD30336**

- 1 x T-handle ratchet wrench
- 9 x 6.35 x 25mm screwdriver bits, SL4, SL5, SL6, PH1, PH2, PH3, PZ1, PZ2, PZ3
- 1 x 5 x 100mm strong magnetic bit holder
- 1 x 4-6mm (25mm) adaptor
- 6 x 1/4" sockets, 5, 6, 7, 8, 9 and 10mm
- Supplied in a plastic box



### T-handle Wrench Screwdriver Set, 18 Pieces

0455  
**TACSD30186**

- Material: Cr-V
- 20 x 6.35 x 25mm screwdriver bits: PH0, PH1, PH2, PH2, PH3, SL3, SL4, SL5, SL6, SL8, HEX3, HEX4, HEX5, PZ1, PZ2, T10, T15, T20, T25 and T30
- 1 x 4-6mm (25mm) bits adaptor.
- 1 x 1/4"-3/8" socket adaptor.
- 1Pcs 125mm magnetic bits holder.
- 1Pcs 75mm magnetic bits holder.
- 1 x industrial ratchet.
- Supplied in a plastic box

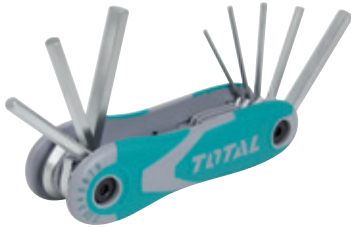


### T Handle Wrench Screwdriver Set, 25 Pieces

0455  
**TACSD30256**

## Hexagonal Keys

- Material: Cr-V
- Heat treated and chrome plated



### Metric Pocket Pack, 8 Pieces

0455	Size mm
THT1061826	2-8

- Material:Cr-V.
- Size:1.5 - 10mm.
- Long arm.
- Heat treated and chrome plated.
- Packed by double blister.



### Long Arm, Hex Key Set, 9 Pieces

0455	Size mm
THT106191	Cr-V 1.5-10mm

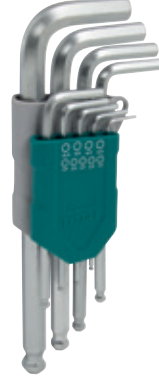
- Material: Cr-V
- Heat treated and chrome plated



### Ball Point Pocket Pack, 8 Pieces

0455	Size mm
THT1061836	2-8

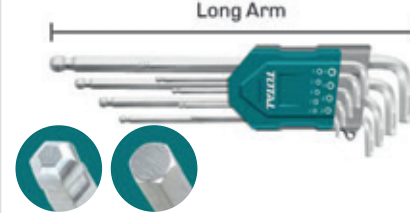
- 9 x keys, 1.5, 2.0, 2.5, 3.0, 4.0, 5.0, 6.0, 8.0 and 10mm
- Material: Cr-V
- Heat treated and chrome plated



### Ball Point Long Arm Set, 9 Pieces

0455	Size mm
THT106291	1.5-10

- Material: Cr-V Size: 1.5-10mm
- Extra-long arm
- Heat treated and chrome plated



### 9 Piece Ball Point Hex Key Set Extra Long Arm

0455	Size mm
THT106292	1.5-10

- 9 x keys, T10, T15, T20, T25, T27, T30, T40, T45 and T50
- Material: Cr-V
- Heat treated and chrome plated



### Torx Key Long Arm Set, 9 Pieces

0455	Size
THT106391	T10-T50

## Socket Sets

### 1/2" drive (33 pieces)

- 19 x 1/2" hex sockets, 8, 10, 12, 13, 14, 15, 16, 17, 18, 19, 20, 21, 22, 23, 24, 25, 27, 30 and 32mm
- 5 x 1/2" star sockets, W10, E12, E14, E16, E20
- 1 x 1/2" flex handle, 375mm
- 2 x 1/2" extension bars, 75mm (3"), 250mm (10")
- 1 x 1/2" universal joint
- 1 x three way adaptor 1/2" to 3/8"
- 2 x spark plug sockets, 16 and 21mm
- 1 x 1/2" L-handle, 250mm (10")
- 1 x 1/2" ratchet wrench (45T)

### 3/8" drive (19 pieces)

- 15 x 3/8" 12 point sockets, 6, 7, 8, 9, 10, 11, 12, 13, 14, 15, 17, 18, 19, 21 and 22mm
- 2 x 3/8" extension bars 75mm (3"), 150mm (6")
- 1 x 3/8" universal joint
- 1 x 3/8" ratchet wrench (45T)

### 1/4" drive (49 pieces)

- 26 x 1/4" screwdriver bits (25mm) PH0, PH1, PH2, PH2, PH3, PZ0, PZ1, PZ2, PZ3, SL4, SL5.5, SL7, H2, H3, H4, H5, H6, H7, H8, H10, T10H, T15H, T20H, T25H, T27H, T30H and T40H
- 1 x bit holder
- 9 x 1/4" hex sockets 4, 4.5, 5, 5.5, 6, 7, 8, 9 and 10mm

- 5 x 1/4" star sockets E4, E5, E6, E7 and E8
- 3 x 1/4" extension bars 50mm (2"), 100mm (4"), 150mm (6")
- 1 x 1/4" universal joint
- 1 x three way adaptor 3/8" to 1/4"
- 1 x 1/4" spinner handle, 150mm
- 1 x 1/4" flexible extension bar, 150mm
- 1 x 1/4" ratchet wrench (45T)

### Other tools (41 pieces)

- 17 x combination spanners, 6, 7, 8, 9, 10, 11, 12, 13, 14, 15, 16, 17, 18, 19, 21, 22 and 24mm
- 5 x flare nut spanners, 8 x 10, 10 x 12, 11 x 13, 12 x 14 and 17 x 19mm
- 10 x hex keys, 2.5, 3, 4, 5, 6, 7, 8, 10, 12 and 14mm
- 1 x machinist hammer, 300g
- 1 x combination pliers, 7"
- 1 x curved jaw lock pliers, 10"
- 2 x slotted screwdrivers (S2), SL6.5 x 100mm, SL6.5 x 150mm
- 2 x Phillips screwdrivers (S2), PH2 x 100mm, PH2 x 150mm
- 2 x stubby screwdrivers, PH2 x 38mm, SL6.5 x 38mm
- Supplied in a blow moulded carry case



### Combination Socket Set, 142 Pieces

0455
THKTHP21426

# INDUSTRIAL GRADE HAND TOOLS

# TOTAL

## Socket Sets



### 162 Piece Tool Chest Set

0455	Description
THTPCS71621	162 Piece Mobile Tool Chest



### 120 Piece Tools & Accessories

0455	Description
THKTAC01120	

- 13 x 1/4" sockets, 4, 4.5, 5.5, 6, 7, 8, 9, 10, 11, 12, 13 and 14mm
- 1 x 1/4" universal joint
- 2 x 1/4" extension bars, 50mm (2"), 100mm (4")
- 1 x 1/4" spinner handle, 150mm
- 1 x 1/4" ratchet wrench (45T)
- 20 x screwdriver bits, PH1, PH2, PH3, PZ1, PZ2, PZ3, SL4, SL5, SL6, H1.5, H2, H3, H4, H5, H6, T10, T15, T25, T30
- 1 x screwdriver bits holder
- 1 x 1/4" flexible extension bar, 150mm
- 1 x 1/4" sliding T-bar, 114mm
- 4 x hex key wrench, 1.5, 2.0, 2.5, 3.0mm
- Material: Cr-V (50BV30), heat treated
- Supplied in a blow moulded carry case



### 1/4" Drive Socket Set, 45 Pieces

0455	Size mm
THT141451	4-14

#### 1/4" drive sockets

- 13 x 1/4" sockets, 4, 4.5, 5, 5.5, 6, 7, 8, 9, 10, 11, 12, 13 and 14mm
- 1 x 1/4" universal joint
- 2 x 1/4" extension bars, 50mm (2"), 100mm (4")
- 1 x 1/4" sliding T bar, 114mm
- 1 x 1/4" flexible extension bar, 150mm
- 1 x 1/4" ratchet wrench (45T)

#### 1/2" drive sockets

- 18 x 1/2" sockets, 8, 10, 12, 13, 14, 15, 16, 17, 18, 19, 20, 21, 22, 23, 24, 27, 30 and 32mm
- 1 x 1/2" universal joint
- 2 x 1/2" extension bars, 125mm (5"), 250mm (10")
- 1 x 1/2" sliding T bar, 250mm (10")
- 2 x spark plug sockets, 16 and 21mm
- 1 x 1/2" ratchet wrench (45T)
- Supplied in a blow moulded carry case



### 1/4" & 1/2" Drive Socket Set, 44 Pieces

0455	Size mm	Size mm
THT421441	10-24 (1/4")	8-32 (1/2")

- 10 x 1/2" sockets, 10, 11, 12, 13, 14, 15, 17, 19 and 24mm
- 1 x 1/2" quick release soft grip ratchet wrench (7ZT)
- 1 x 1/2" extension bar, 125mm (5")
- Supplied on a plastic hanger



### 1/2" Drive Socket Set, 12 Pieces

0455	Size mm
THT141121	10-24

- 18 x 1/2" sockets, 10, 11, 12, 13, 14, 15, 16, 17, 18, 19, 20, 21, 22, 23, 24, 27, 30 and 32mm
- 1 x 1/2" universal joint
- 2 x 1/2" extension bars, 125mm (5"), 250mm (10")
- 2 x spark plug sockets, 16 and 21mm
- 1 x 1/2" ratchet wrench (45T)
- Material: Cr-V (50BV30), heat treated
- Supplied in a blow moulded carry case



### 1/2" Drive Socket Set, 25 Pieces

0455	Size mm
THT121251	10-32

## Socket Drives

- (45T)
- Material: Cr-V + Cr-Mo
- Supplied on a plastic hanger



### Ratchet Wrench

0455	Size	Length mm
THT106146	1/4"	158
THT106386	3/8"	205
THT106126	1/2"	260

## Socket Sets

### 1/2" Drive 6 Point Sockets

0455	Size mm
THTST12131	13
THTST12211	21
THTST12321	32



## Spanner Sets

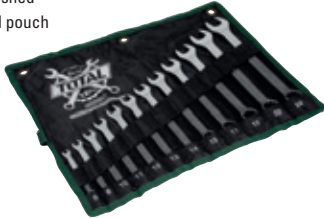
- 6, 8, 10, 12, 14, 15, 17 and 19mm
- Fine polished
- Supplied on a plastic hanger



### Combination Spanner Set, 8 Pieces

0455	Size mm
THT102286	6-19

- 6, 8, 10, 11, 12, 13, 14, 15, 17, 19, 22 and 24mm
- Fine polished
- With roll pouch



### Combination Spanner Set, 12 Pieces

0455	Size mm
THT1022121	6-24

- 6, 8, 10, 12, 12, 14, 17, 19, 22, 24, 27, 30 and 32
- Fine polished
- With roll pouch



### Combination Spanner Set, 12 Pieces

0455	Size mm
THT1022122	6-32

- 6 x 7, 8 x 9, 10 x 11, 12 x 13, 14 x 15, 16 x 17, 18 x 19, 20 x 22, 21 x 23, 24 x 27, 25 x 28 and 30 x 32mm
- Fine polished
- With roll pouch



### 8 Piece Double Open End Spanner Set 6-22mm

0455	Size 1	Size 2
THT102386	6 x 7, 8 x 9, 10 x 11, 12 x 13 mm	14 x 15, 16 x 17, 18 x 19, 20 x 22 mm

- 6 x 7, 8 x 9, 10 x 11, 12 x 13, 14 x 15, 16 x 17, 18 x 19, 20 x 22, 21 x 23, 24 x 27, 25 x 28 and 30 x 32mm
- Fine polished
- With roll pouch



### Double Open End Spanner Set, 12 Pieces

0455	Size mm
THT1023121	6-32

- 6 x 7, 8 x 9, 10 x 11, 12 x 13, 14 x 15, 16 x 17, 18 x 19 and 20 x 22mm
- Fine polished
- Supplied on a plastic hanger



### Offset Ring Spanner Set, 8 Pieces

0455	Size mm
THT102486	6-22

- 6 x 7, 8 x 9, 10, x 11, 12 x 13, 14 x 15, 16 x 17, 18 x 19, 20 x 22, 21 x 23, 24 x 27, 25 x 28 and 30 x 32mm
- Fine polished
- With roll pouch



### Offset Ring Spanner Set, 12 Pieces

0455	Size mm
THT1024121	6-32

- 19, 22, 24, 27, 30 and 32mm
- Fine polished Cr-V
- With canvas bag

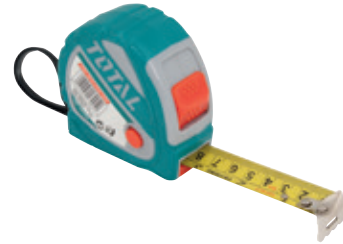


### Ratchet Spanner Set, 6 Pieces

0455	Size mm
THT102RK061	19-32

## Measuring Equipment

- 3 stop button function
- Metric and inch display
- Rubber cover



### Steel Tape Measure

0455	Length Metres	Width mm
TMT126031	3	16
TMT126052	5	25
TMT126101	10	25

- Reading: 0.01mm metric/inch system conversion in any position
- Supplied in a plastic box



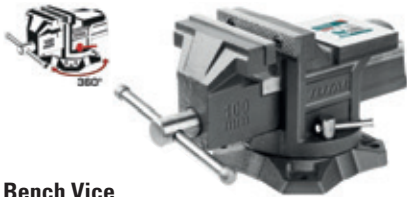
### Digital Caliper

0455	Range mm
TMT321501	0-150
TMT322001	0-200

# INDUSTRIAL GRADE HAND TOOLS

# TOTAL

## Clamps



### Bench Vice

0455	Maximum Force Kgs
THT6146	1300
THT6186	2500

- Body material: malleable cast iron
- Thread: T-shaped
- Supplied in a poly bag



### G Clamp

0455	Size
THT13141	4"
THT13161	6"



- Clamp size: 50 x 200mm
- Max clamp force: 170kgs
- Thickness and width of iron ruler: 5 x 15mm
- Diameter of screw thread : 11mm

### F Clamp, 200mm

0455	Size mm	Force Kgs
THT1320502	200	170

- Clamp Size: 80 x 300mm
- Max Clamp Force: 270kgs
- Thickness and Width of Iron Ruler: 6 x 22mm
- Diameter of Screw Thread: 13mm

### F Clamp, 300mm

0455	Size mm	Force Kgs
THT1320801	300	270

- Clamp size: 140 x 1000mm
- Max clamp force: 450KGS
- Thickness and width of iron ruler: 8 x 30mm
- Diameter of screw thread:15.3mm

### F Clamp, 1000mm

0455	Size mm	Force Kgs
THT1321401	1000	450

## Spirit Levels

- Double side milled
- 0.5mm/m accurate vials
- Aluminium thickness: 1.5mm
- Fitted with 3 powerful magnets
- Double flat surface desig

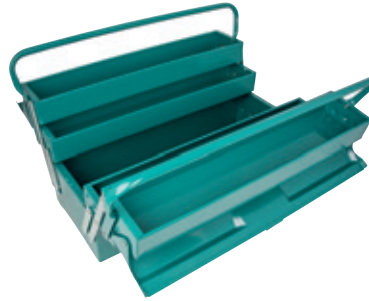


## Magnetic

0455	Length cm
TMT21005M	100

## Tool Box

- 495 x 200 x 290mm



## Metal Cantilever Tool Box

0455
THT10701

## Flashlight

- Material: Aviation grade aluminium alloy: 6N01-T6
- U.S.A. manufactured
- CREE XPE2 R3 LED 3W
- Lumen: 135
- Beam distance: 200m
- Lifespan: 100000 hours
- Batteries: 3 x AAA
- Runtime: 5 hours
- Tail light switch
- Waterproof grade: IPX-4
- Weight: 105g (without batteries)



## Aviation Grade

0455	Diameter mm	Length mm
TFL013AAA1	32	126.5



## Headlamp

0455
THL013AAA2



For Malleable Iron Fittings  
see pages 1338-1376

# INDUSTRIAL GRADE HAND TOOLS

# TOTAL

## Grease Gun

- Capacity: 400cc/14oz
- Loading: 14oz cartridge/400cc bulk
- Working pressure: 4500 - 10,000psi
- Burst pressure: 14000psi
- Material: 1.2mm steel tube and aluminium casting
- Standard accessories: 1 x 12" high pressure flexible nylon hose, 1 x metallic bend spout



Heavy-duty

0455  
THT111051

## Tool Pouches & Bags

- Reinforced plastic base
- Adjustable shoulder strap



24" Rigid Frame Tool Bag

0455  
THT16241

- Adjustable belt: 92 -127cm



Single Tools Pouch

0455	Adjustable Belt cm
THT16P2031	92-127



Single Tools Pouch

0455  
THT16P1011

## Gloves

- For use in an oil environment
- Nitrile coated palm, smooth and rough texture finish
- Packed in a poly bag



Nitrile Gloves XL

0455	Size
TSP12101	10

# TORCHES WORK LAMPS & LIGHTING

## Redashe Rechargeable Slim Work Light

### Features:

- Dimmable operational switch to create a floodlight or focused beam
- Swivelling base with strong built-in scratch proof magnet
- Smooth wand pivot of up to 150°
- Lamp body rotates up to 270°
- Charging time: Approx. 3 hours
- Minimum operation time: 2 hours
- Ergonomic and comfort grip handle
- Micro USB weatherproof charging point complete with charging indicator

new product



Redashe



0478	Colour
JETW007R	Red
JETW007G	Green
JETW007Y	Yellow

Tech Sheet 71697

## Redashe Rechargeable Headlamp

### Features:

- Adjustable zoom headlamp for spotlight or floodlight application
- Infrared manual sensor system for a more convenient operation
- Lithium-ion rechargeable battery for longer life and consistent power
- Built-in battery level indicator on the front of the headlamp
- The lamp head can be adjusted 80° up and down
- Non-slip elastic head strap

new product



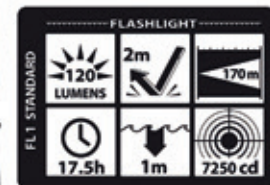
Redashe



0478	Lumens
JK120	400

## Intrinsically Safe Polymer Penlight

new product



0712	Lumens	Beam
JXPP-5422B	120	170 Metres

# PROFESSIONAL TOOLS



RIDGID® pipe wrenches are world-renowned for their unsurpassed toughness and serviceability. The original heavy-duty pipe wrench, pictured here, has earned the confidence of pipe professionals for over 80 years because it does the job right the first time, every time.

RIDGID® pipe wrenches are also available in a wide variety of purpose-built configurations, and are available with cast aluminium handles that offer an average 40% weight reduction.



## Pipe Wrenches

- Sturdy, cast-iron housing
- I-beam handle
- Full floating forged hook jaw
- Self cleaning threads with replaceable hook and heel jaws



### Heavy-duty Pipe Wrenches

0494	Ø mm	Length mm	Model	Kg
31020	50	350	14	1.6
31025	65	450	18	2.6
31030	80	600	24	4.4
Tech Sheet 60448				

- Jaws and all other parts identical to RIDGID® heavy-duty wrenches
- All the great benefits of the heavy-duty RapidGrip wrench
- Professional strength in lightweight aluminium
- Nearly 40% lighter than comparable cast iron wrenches
- 35% lighter than heavy-duty models
- Ideal for overhead applications
- Offers the same durability and ease-of-use found in all RIDGID® heavy-duty wrenches



### Aluminium Pipe Wrenches

0494	Ø mm	Length mm	Model	Kg
31095	50	350	814	1.1
31100	65	450	818	1.7
31105	80	600	824	2.7
Tech Sheet 60448				

- Features a jaw opening parallel to the handle and a narrower hook jaw head
- Provides easy entry into tight spots



### Heavy-duty Offset Pipe Wrenches

0494	Ø mm	Length mm	Model	Kg
89445	80	600	24	4.4
Tech Sheet 60448				

- Features a jaw opening parallel to the handle and a narrower hook jaw head
- Provides easy entry into tight spots



### Aluminium Offset Pipe Wrenches

0494	Ø mm	Length mm	Model	Kg
31120	50	350	14	0.9
31125	65	450	18	1.6
31130	80	600	24	2.7
Tech Sheet 60448				



## Cutting Tool

### PC 116 Powered Tubing Cutter

This 4.5" machine saves time and effort thanks to its fast set-up and operating features:

- Quick size adjustment
- Quick-feeding mechanism
- Spark-free
- Cold cutting

High-strength alloy wheels with tool-free replacement. It delivers consistent and accurate cutting in a wide variety of materials, such as:

- Stainless steel
- Steel
- Coated steel
- Aluminium
- Copper



#### PC116 Powered Tubing Cutter

0494	Capacity mm	Description
68118	12-116	With Plastic & Metallic Cutter Wheels, 110V
70003	12-116	With Plastic & Metallic Cutter Wheels, 230V

## Cutting Tool Accessories



#### PC116 Tube Cutting Stand

0494
64903



#### PC116

0494	Description
66938	Cutter Wheel without Bearing for Carbon Steel, Stainless Steel & Aluminium.
66943	Cutter Wheel without Bearing for Plastic & Copper.



For **Stainless Steel Press Fit Piping System**  
see pages 1118-1126



# PROFESSIONAL TOOLS

**RIDGID**
**new  
product**

## Press Tools

### RP 219 is our Next-Gen 19 kN compact press tool.

Providing the user **FULL ACCESS** in the most confined spaces with its Lightweight (<2 kg) and Ultra-Slim Inline Design as well as the **full flexible 350° Head Rotatio** .

RP 219 also provides the user **FULL ACCESS** to super-fast pressing, critical tool information, multiple power sources and a wide range of 19 kN compact press jaws.

The RP 219 also features 'Press-check!', an integrated pressure sensor that monitors and confirms every press cycle and offers the lowest cost-of-ownership.

**RP 219 Kits include:** Carrying case, 1 x 2.5 Ah Li-Ion battery and 1x 230V fast-charger, 1 x car charging cord



#### RP 219 Press Tool

0494	Description	Weight (kg)
69073	RP 219 without Press Jaws	5.2
69078	RP 219 with M15-18-22 Press Jaws	9.2
69083	RP 219 with M15-22-28 Press Jaws	9.2

The **RIDGID RP 350** features a brushless motor capable of over 100,000 press cycles and requires no scheduled maintenance. Get access to hard-to-reach locations with endless 360° swivel. The RP 350 has been upgraded from top to bottom with the most advanced LED interface and lighting.

**RP 350-B Tool Kits include:** 1 x 2.5Ah battery, 1 x fast-charger and Carrying Case



#### RP 350 Press Tool

0494	Description
67088	RP 350-B Tool Kit (No Jaws)
69818	RP 350-B Kit + M15-18-22
69823	RP 350-B Kit + M15-22-28



#### Jaws for M Standard Pressfit System

0494	Press Jaw Type
69868	M12
69873	M15
69878	M18
69883	M22
69888	M28
69893	M35

The **RP 351** Inline Design Press Tool is designed for speed and continued operation in the most confined spaces. Optimally balanced for one-handed use and reduced job site fatigue. Driven by the new RIDGID Brushless Motor Technology, RP 351 reaches over 100,000 press cycles and requires no scheduled maintenance.

**RP 351-B Tool Kits include:** 1 x 2.5AH battery, 1 x fast-charger and carrying case



#### RP 351 Press Tool

0494	Description
67228	RP 351-B + Case + Battery + Charger
69838	RP 351-B Tool Kit + M15-18-22
69843	RP 351-B Tool Kit + M15-22-28

The **NEW RIDGID® StrutSlayr** is the latest accessory, making the world's most popular press tool even more valuable. StrutSlayr attaches to RIDGID® 32kN press tools to deliver a fab shop quality, burr-free cut in 5 seconds or less. No grinding or sawing sparks - just a clean, consistent SHEAR cut with a pull of a trigger.

**Fab Shop Quality:** Burr-free cuts eliminate the need for extra filin

**Increased Efficiency:** Clean, consistent cuts in 5 seconds or less

**Shear Cut:** no grinding or sawing sparks

**Portable:** Easy to move around the job site and mounts to RIDGID TRISTANDS

**Built-in Measuring Guide:** allows the accuracy of cut-on application.



#### Strut Shear Head

0494	Capacity mm	Weight (Kg)	Tool Compatibility
64053	41 x 21	8.96	RP350, RP340, RP330
64058	41 x 41	8.96	RP350, RP340, RP330

## Pipe/Tube Cutting & Preparation

- Specifically designed for use in restricted spaces on small diameter, hard and soft copper, aluminium, brass and plastic tubing
- Rollers include grooves for close-to-flare cut
- Strong, lightweight slide and wheel housing
- Large knurled feed screw knob gives easy control of cutting pressure for clean cuts
- Models 117 and 118 include a self-feeding cutter wheel that automatically cuts after tightening the knob once (AUTOFEED®)
- Model 118 features a special knob for easier tightening of the feed screw
- Model 101-ML is for multi-layer tubing only



### Midget Cutters for Close Quarters Tubing

0494	Capacity mm	Description	Model	Kg
40617	6-28	Midget Cutter	101	0.23
32975	3-16	Midget Cutter	103	0.15
32985	5-24	Midget Cutter	104	0.15
32933	-	Ratchet Handle only for 118 & 101 Midget Cutters	118	0.26
21938	6-28	Midget Cutter for Multilayer Tubing	101-ML	0.15

Tech Sheet 60451

- For plastic (PVC, CPVC, PP, PEX, PE) and multilayer tubing
- Spring-loaded handles for faster positioning
- Single stroke, easy cut
- Durable aluminium construction for heavy-duty use
- Easy attachable ML adaptor for improved multi-layer cutting and instant re-rounding of tubing



### Plastic & Multi-layer Pipe Cutters

0494	Capacity mm	Description	Model	Kg
23493	6-25	Single Stroke Tubing Cutter	PC-1375 ML	0.34

Tech Sheet 60451

- Ergonomic grips on bottom handle are spaced at 1/2" increments to act as a quick pipe-measuring scale
- X-CEL® quick-change blade
- Burr-less cutting operation provides a square cut
- For plastic (PVC, CPVC, PP, PEX, PE), rubber hose and multi-layer tubing



### Ratchet Cutters with Ergonomic Grips

0494	Capacity mm	Description	Model	Kg
23498	3-42	Ratchet Action Plastic Pipe & Tubing Cutter	RC-1625	0.52

Tech Sheet 60451

C-Style cutters cut 15mm/22mm or 28mm copper tubing while offering unique features that take copper tube cutting to a whole new level.

new product



### C Style Cutter

0494	Capacity mm	Model	Kg
57018	15-22	C15/22	0.23
60668	28	C28	0.21



For **PVC Braided Hose** see pages 1402-1405



# PROFESSIONAL TOOLS

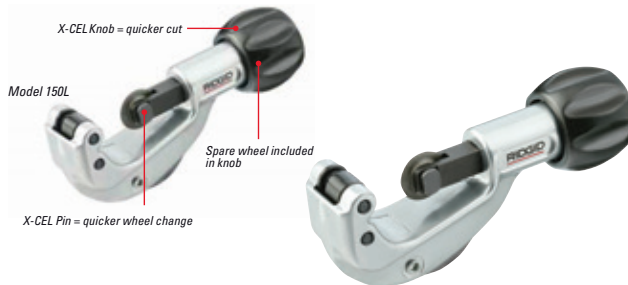


## Pipe/Tube Cutting & Preparation

### X-CEL® Means Speed

Many of our most popular tubing cutters now include several X-CEL® features to make your job quicker and easier:

- X-CEL® Knob – cut tubing more quickly and easily with our larger, more ergonomic designs
- X-CEL® Wheel Pin – change your cutter wheel quickly using our new ball detent design, no tool needed, no lost clips.
- Spare cutter wheels included for maximum uptime



### Enclosed Feed Tubing Cutters, X-CEL Features, for Copper Tube

0494	Capacity mm	Description	Model	Kg
66737	6 - 35	Enclosed Feed Cutter	150L	0.44
33055	6 - 60	Ratcheting Enclosed Feed Cutter	205L	0.91

Tech Sheet 60451

### Enclosed Feed Tubing Cutters with New X-CEL® Features:

- Telescoping feed screw design keeps the cutter at the same length regardless of tubing diameter - good for tight spaces
- Enclosed feed screw to eliminate clogging and jamming
- Grooved rollers for close-to-flare cut
- Fold-away reamer
- Now includes X-CEL® Knob and X-CEL® Pin for quicker cutting and wheel replacement
- Made from high-strength zinc alloy
- Spare cutter wheel included in the knob
- Cuts hard/soft copper, aluminium, brass and multilayer tubes



### Enclosed Feed Tubing Cutters, X-CEL Features, for Stainless Steel Tube

0494	Capacity mm	Description	Model	Kg
29963	6 - 35	Enclosed Feed Cutter	150L	0.47
31803	6 - 60	Ratcheting Enclosed Feed Cutter	205L	0.91

Tech Sheet 60451

## Pipe Bending Equipment

- Combines accuracy with easy operation
- Designed for bending copper, steel and stainless steel ( $\leq 1.5\text{mm}$ ) to a maximum of  $180^\circ$
- Offset cushion grip handles for comfort when forming  $180^\circ$  bends
- A  $90^\circ$  start angle and unique oil-absorbing shoe minimise bending effort while forming accurate bends in copper and steel tubing



### 400 Series Instrument Benders

0494	OD mm	Bend Radius mm	Model	Kg
36112	6	16	406M	0.68
36092	8	24	408M	1.18
36127	12	38	412M	2.45

Tech Sheet 60458

- The stainless steel specialist
- High quality bending performance on stainless steel and other hard tubing such as steel and titanium
- Two-stage design allows for in-place bending from  $90^\circ$  to  $180^\circ$  without ever crossing handles
- Lock/unlock with a half-turn rotation of the bending handle
- Extra long 16" (40cm) handles increase leverage, and roll dies in the bending form reduce force needed
- Vice clamp built into bending form for extra stability



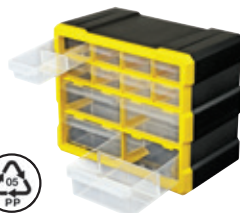
### 600 Series Heavy-duty Instrument Benders

0494	OD mm	Bend Radius mm	Model	Kg
38053	6	16	606M	0.76
38058	10	24	610M	1.84
38063	12	38	612M	2.76

Tech Sheet 60458

## Component Organisers

**Big drawer quantity:** 4  
**Big drawer dimensions:**  
 Length 153mm x width 127mm x height 58mm  
**Small drawer quantity:** 8  
**Small drawer dimensions:**  
 Length 153mm x width 62mm x height 37mm  
**Wall mounting key holes:** 4  
**Partition with gripper:** Yes  
**Tight-fitted partition:** Yes  
**Cabinet material:** Polypropylene  
**Drawer material:** Clear polypropylene



### 12 Drawer Storage Cabinet

0426	Height mm	Width mm	Depth mm
V-ACO 12	245	293	164
Tech Sheet 20173			

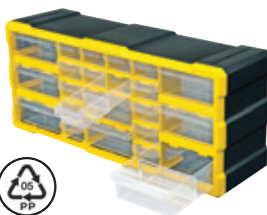
**Drawer quantity:** 18  
**Drawer dimension:**  
 Length 153mm x width 127mm x height 58mm  
**Wall mounting key holes:** 4  
**Partition with gripper:** Yes  
**Tight-fitted partition:** Yes  
**Cabinet material:** Polypropylene  
**Drawer material:** Clear polypropylene



### 18 Drawer Storage Cabinet

0426	Height mm	Width mm	Depth mm
V-ACO 18	457	424	164
Tech Sheet 20173			

**Big drawer quantity:** 8  
**Big drawer dimension:**  
 Length 153mm x width 127mm x height 58mm  
**Small drawer quantity:** 14  
**Small drawer dimension:**  
 Length 153mm x width 62mm x height 37mm  
**Wall mounting key holes:** 4  
**Partition with gripper:** Yes  
**Tight-fitted partition:** Yes  
**Cabinet material:** Polypropylene  
**Drawer material:** Clear polypropylene



### 22 Drawer Storage Cabinet

0426	Height mm	Width mm	Depth mm
V-ACO 22	245	555	164
Tech Sheet 20173			

**Small drawer quantity:** 30  
**Small drawer dimensions:**  
 Length 153mm x width 62 x height 37mm  
**Big drawer quantity:** 9  
**Big drawer dimensions:**  
 Length 153mm x width 127 x height 58mm  
**Wall mounting key holes:** 4  
**Partition with gripper:** Yes  
**Tight-fitted partition:** Yes  
**Cabinet material:** Polypropylene  
**Drawer material:** Clear polypropylene



### 39 Drawer Storage Cabinet

0426	Height mm	Width mm	Depth mm
V-ACO 39	457	424	164
Tech Sheet 20173			

**Drawer quantity:** 60  
**Drawer dimension:**  
 Length 153mm x width 62mm x height 37mm  
**Wall mounting key holes:** 4  
**Partition with gripper:** Yes  
**Tight-fitted partition:** Yes  
**Cabinet material:** Polypropylene  
**Drawer material:** Clear polypropylene



### 60 Drawer Storage Cabinet

0426	Height mm	Width mm	Depth mm
V-ACO 60	457	424	164
Tech Sheet 20173			

**Drawer quantity:** 9  
**Drawer dimension:**  
 Length 153mm x width 127mm x height 58mm  
**Bin quantity:** 9  
**Bin drawer dimension:**  
 Length 153mm x width 127mm x height 65mm  
**Wall mounting key holes:** 4  
**Partition with gripper:** Yes  
**Tight-fitted partition:** Yes  
**Cabinet material:** Polypropylene  
**Drawer material:** Clear polypropylene



### 9 Drawer, 9 Bins Storage Cabinet

0426	Height mm	Width mm	Depth mm
V-ACO 9B9D	457	424	164
Tech Sheet 20173			

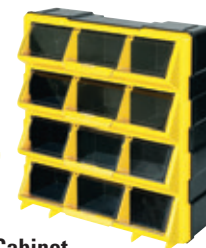
**Drawer qty:** 30  
**Drawer dimension:**  
 Length 153mm x width 62mm x height 37mm  
**Bin drawer quantity:** 30  
**Bin drawer dimensions:**  
 Length 153mm x width 127mm x height 65mm  
**Wall mounting key holes:** 4  
**Partition with gripper:** Yes  
**Tight-fitted partition:** Yes  
**Cabinet material:** Polypropylene  
**Drawer material:** Clear polypropylene



### 30 Drawer, 9 Bins Storage Cabinet

0426	Height mm	Width mm	Depth mm
V-ACO 9B30D	460	426	166
Tech Sheet 20173			

**Pocket qty:** 12  
**Side pocket inner dimensions:**  
 Length x 125mm x width 100mm x height 70mm  
**Centre pocket inner dimensions:**  
 Length x 125mm x width 123mm x height 68mm  
**Wall mounting key holes:** 4  
**Body and frame:** Polypropylene  
**Lid:** Polycarbonate



### 12 Pockets with Transparent Lid Storage Cabinet

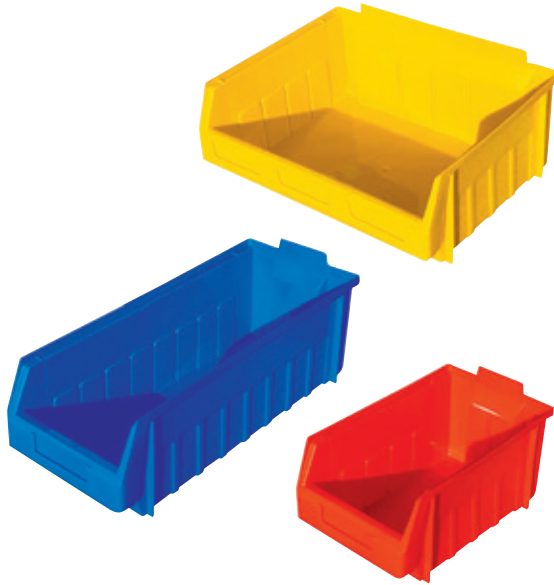
0426	Height mm	Width mm	Depth mm
V-ACO 12 PTL	460	426	166
Tech Sheet 20173			

# INTERCHANGEABLE STORAGE & DISPLAY SYSTEMS



## Supra Storage Bins

- Impact resistant.
- Strong rear lip for use with louvred panels. Integral label holder.
- Clear access to contents.
- Manufactured from high density polypropylene.
- High and low temperature tolerant.
- Resistant to most individual solvents.
- Easy to stack on top of each other.
- Incorporates a safety stop feature at the back in SB4/5/6 for use in shelves.



### Red, Blue, Yellow or Grey

0128	Colour	Height mm	Length mm	Width mm	Pack Qty
SB-1-RED-P60	Red	60	125	100	60
SB-1-BLUE-P60	Blue	60	125	100	60
SB-2-RED-P60	Red	85	170	100	60
SB-2-BLUE-P60	Blue	85	170	100	60
SB-2-YELLOW-P60	Yellow	85	170	100	60
SB-3-RED-P50	Red	125	220	130	50
SB-3-BLUE-P50	Blue	125	220	130	50
SB-3-YELLOW-P50	Yellow	125	220	130	50
SB-4-RED-P10	Red	143	290	178	10
SB-4-BLUE-P10	Blue	143	290	178	10
SB-5-BLUE-P5	Blue	145	290	363	5
SB-6-BLUE-P10	Blue	145	440	180	10
SB-7-BLUE-P6	Blue	215	435	400	6
SB-8-BLUE-P6	Blue	300	600	425	6

Tech Sheet 20172

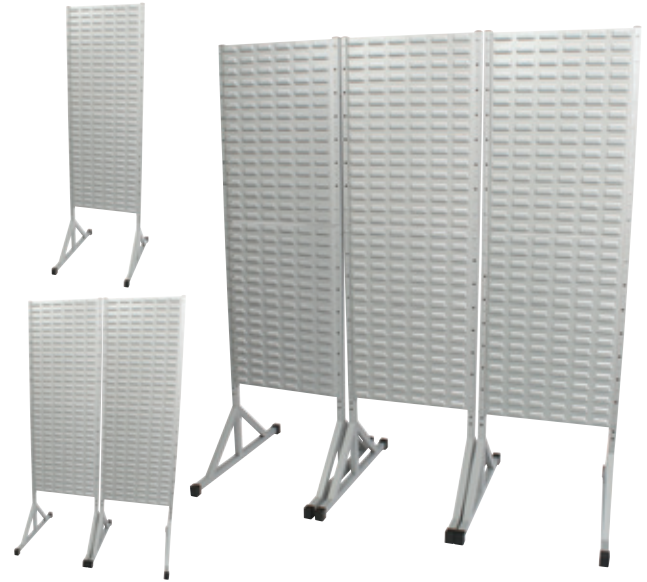
### Accessories – Partitions

0128	Description
HP/SB4/6	Horizontal Partition for SB-4 & SB-6
VP/SB4/5	Vertical Partition for SB-4 & SB-5
VP/SB7	Vertical Partition for SB-7
VP/SB8	Vertical Partition for SB-8

Tech Sheet 20172

## Shop Floor Stands

- Free standing stands come complete with louvred panels on one side
- Easy to assemble
- Storage bins ordered separately



### Free Standing Louvred Panel Stands

0128	Length mm	Width mm	Height mm	Type
FSS/L/1	457	630	1560	Single Span
FSS/L/2	914	630	1560	Double Span
FSS/L/3	1371	630	1560	Triple Span

Tech Sheet 20170

Ideal for component storage and transfer to assembly or production areas. Unit comprises of base unit with aluminium chequered top plate fitted with castors and a frame on which four louvre panels can be fitted (supplied).

Example: trolley can hold 16 x SB-1, 32 x SB-2, 12 x SB-3, 10 x SB-4 on the panels with the base free for different sizes of bins as per your requirement.

Storage bins not supplied.

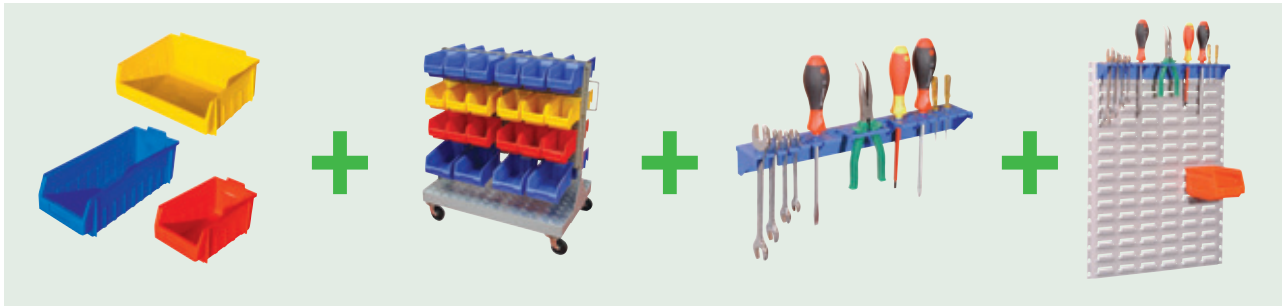
- Robust construction
- Epoxy powder coated
- Easy assembly



### Mobile Louvred Panel Stand

0128	Length mm	Width mm	Height mm
SFT	970	600	1100

Tech Sheet 20171



## Tool Trays

Can be screwed to walls, workstations or for use with louvred panels.

**Note:** tools not included.



Red, Blue or Grey

0128

TTH-RED

TTH-BLUE

TTH-GREY

Tech Sheet 20173

## Multi-purpose Display Board

- 451 hanging holes
- 38 strong hooks (two sizes) and 38 locks

**Note:** tools not included.



Red or Blue

0128	Width mm	Height mm
MDB500-RED	505	390
MDB500-BLUE	505	390

Tech Sheet 20174

## Poly Bins & Rails

Each bin is 5" x 4" x 3".



## Set of 20 Bins & 5 Rails

0128

PBR205

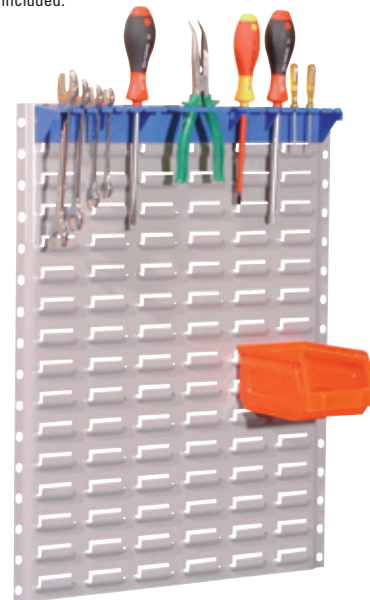
Tech Sheet 20175

## Louvred Wall Panels

The louvred panels are made from powder-coated 1.5mm CRCA steel and come in four sizes.

These louvre panels can be easily fitted on walls or on a stand.

**Note:** tool tray, tools and Supra bin not included.



## For Use with Supra Bins

0128	Width mm	Height mm
SB/LP1	457	457
SB/LP2	457	610
SB/LP3	457	915
SB/LP6	457	1830

Tech Sheet 20176



On celebrating 120 years of peak protection Portwest has possessed an unrelenting ambition to produce the world's most trusted and requested protective wear. Through the decades, they have continuously proven their dedication to quality, producing world-beating safety garments, foot protection, hand protection and PPE, while pushing the boundaries in protection technologies.

**Technologies that make the workplace a safer place.**





## INDUSTRY INSPIRED DESIGN

For 120 years, Portwest's product designers have been developing a deep understanding of the safety needs of workers across many industries. This understanding has enabled them to create industry-focused safety wear solutions tailored to the specific risks faced by professionals across a multitude of industries, allowing workers to perform at the height of their ability.



# PPE & SAFEGUARDING EQUIPMENT

**PORTWEST**

**new  
product**

## HEAD PROTECTION

The rapidly expanding Portwest head protection range aims to benefit wearers by combining the most up-to-date styles with the highest standards in head protection, irrespective of job or location. A wide selection of compatible accessories is also available.



### Head Protection

- Specially designed for working at height
- Electrical insulation up to 1000V AC or 1500V DC (EN50365)
- Unvented helmet shell for safe use with electrical applications
- 6-point textile suspension harness for enhanced wearer comfort and safety
- Size adjustable headband via wheel ratchet system
- Chin strap included



#### Height Endurance Helmet

0352	Colour
PS53BKR	Black
PS53ORR	Orange
PS53RBR	Royal Blue
PS53WHR	White
PS53YER	Yellow

- Specially designed for working at height
- Size adjustable headband via wheel ratchet system
- Hi-visibility colour for visibility in daylight
- Y-style 4-point chin strap
- Light and robust



#### Height Endurance Helmet

0352	Colour
PS73ORR	Orange
PS73RBR	Royal Blue
PS73RER	Red
PS73WHR	White
PS73YER	Yellow

### BEST SELLER

- Unvented helmet shell for safe use with electrical applications
- Electrical insulation up to 1000V AC or 1500V DC (EN 50365)
- Size adjustable headband via wheel ratchet system
- 4-point textile suspension harness for enhanced wearer comfort and safety
- Soft foam sweat band included



#### Safety Helmet

0352	Colour
PS57ORR	Orange
PS57RBR	Royal Blue
PS57RER	Red
PS57WHR	White
PS57YER	Yellow

- Portwest exclusive design and patented model
- Translucent shell to see through peak and sides
- 6-point textile suspension harness for enhanced wearing comfort and safety
- Vented helmet shell to allow air circulation cooling the wearer's head
- Size adjustable headband via wheel ratchet system
- UV 400 stabilised



#### Peak View Ratchet Hard Hat, Vented

0352	Colour
PV60BLU	Blue
PV60GNR	Green
PV60ORR	Orange
PV60SKR	Smoke
PV60YER	Yellow

- Premium style bump cap with innovative plastic shell
- Durable and impact resistant PE shell
- EPP foam liner for maximum impact protection
- Lightweight for enhanced wearer comfort
- Reflective piping for increased visibility
- Multiple ventilation holes in plastic shell and top mesh on cap
- Short peak
- Brightness 150 lumens



#### Bump Cap

0352	Colour
PS79BKR	Black
PS79NAR	Navy
PS79ORR	Orange
PS79YER	Yellow

- Equipped with a removable and USB rechargeable light
- Inner ABS shell and soft pad for shock absorption
- Durable high density EVA protects and gives comfort to the wearer
- USB rechargeable Li-ion battery



#### Bump Cap with LED Light

0352	Colour	Brightness
PW29NAR	Navy	150 Lumens

#### Light only

- Magnetic housing makes it easy to put on and remove
- Adhesive backing to attach housing to helmets
- Compatible with most hard hats
- USB rechargeable Li-ion battery
- Function high-medium-flash
- Brightness 150 lumens



#### Magnetic Helmet Light

0352	Brightness
HV29BKR	150 Lumens



# EAR PROTECTION

Portwest's hearing protection range includes PPE with different level sound attenuation, to be adapted to various working environments giving the correct protection from dangerous noise, without isolating the workers. This new range of earmuffs offer a variety of models and colours allowing a personalised choice.



## Ear Protection

- Padded headband for comfort
- Adjustable dual pin system provides multiple positioning for better fit
- SNR 34dB attenuation level
- Light and robust



### Premium Ear Defenders

0352	Colour
PS46GRR	Grey

- Colour coded cups for easy identification of attenuation levels
- Reflective headband for better visibility and premium look
- Padded headband for comfort
- Adjustable dual pin system provides multiple positioning for better fit
- PW72GGN  
Grey/Green Trim 26db
- PW73GYR  
Grey/Yellow Trim 28db
- PW78GOR  
Grey/Orange Trim 32db



### HV Extreme Ear Defenders

0352	Colour
PW72GGN	Grey
PW73GYR	Grey/Navy
PW78GOR	Grey/Orange

- Folds to palm size for better carriage and to keep clean
- Lightweight and comfortable
- Padded headband for comfort
- Adjustable length for a secure and comfortable fit
- SNR 32db



### Top Ear Defenders

0352	Colour
PS44BKR	Black

- Ultra lightweight for long uses
- Padded headband for comfort
- Adjustable length for a secure and comfortable fit
- 100% metal free
- SNR 28db



### Classic Ear Defenders

0352	Colour
PW48RER	Red
PW48YER	Yellow

- Disposable ear plugs made from soft PU foam
- Excellent attenuation rate
- Easy to fit



### Foam Ear Plugs

- Box Quantity - 200 pairs

0352	Colour
EP02ORR	Orange

- Disposable ear plugs made from soft PU foam
- Ergonomically designed for comfort and ease of use
- Excellent attenuation rate



### Bell Comfort Foam Ear Plugs

- Box Quantity - 200 pairs

0352	Colour
EP06ORR	Orange

- Reusable earplugs to support sustainability
- Each pair individually wrapped in re-closable zip bag for hygiene purposes
- Supplied in a handy portable dispenser box



### Reusable TPR Ear Plugs

- Box Quantity - 50 pairs

0352	Colour
EP10ORR	Orange

- Disposable ear plugs made from soft PU foam
- Corded for safe keeping
- Easy to fit



### Comfort Foam Corded Ear Plugs

- Box Quantity - 200 pieces

0352	Colour
EP09ORR	Orange

# EYE PROTECTION

Portwest's eye protection range includes spectacles, safety goggles and visors, designed to protect the eyes and face of workers from injury during work activities



## Eye Protection

Pack Qty: 1

- Single wrap around lens
- Co-injected TPE brow guard for extra protection from particles, impact and glare
- Soft rubber temple tips for non-slip fit
- KN certified lens coatings (anti-scratch/anti-fog)
- Non-magnetic - nickel and ferrous free
- Exceptionally good, universal fit
- Ideal fit for smaller face shape
- Ultra lightweight for long uses



### Dynamic KN Safety Glasses

0352	Colour
PS10CLR	Clear
PS10SKR	Smoke

- Wrap around style for panoramic view
- Co-injected TPE brow guard for extra protection from particles, impact and glare
- Soft rubber temple tips for non-slip fit
- KN certified lens coatings (anti-scratch/anti-fog)
- Non-magnetic - nickel and ferrous free
- Soft TPR nose piece for universal fit
- Soft rubber temple tips for non-slip fit



### Dynamic Plus KN Safety Glasses

0352	Colour
PS20CLR	Clear
PS20SKR	Smoke

- Suitable for wearing over most prescription glasses
- Adjustable elastic headband for a perfect fit
- Protects from fluid and splashes
- Anti-scratch coating for added durability
- Anti-fog coating for additional comfort to the wearer



### Over Safety Glasses

0352	Colour
PS24CLR	Clear

- Lightweight premium design wrap-around design
- Superior front and side face protection
- Back foam ventilation and lens treatment prevents misting and fogging of the ocular
- Adjustable dual pin system provides multiple positioning for better fit
- Adjustable elastic headband for a perfect fit
- Protects from fluid and splashes



### Slim Safety Goggles

0352	Colour
PW26CLR	Clear

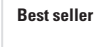
- Supplied in a handy portable dispenser box
- Low linting construction for minimal contamination
- Each towelette individually wrapped

Box Qty: 100

### Lens Cleaning Wipes

0352	Colour	Box Quantity
PA01WHR	White	100

- Single panoramic lens glasses
- Detachable foam offers additional protection against shocks and dust
- Lightweight wrap-around design
- Flexible arms for ultra comfort
- Soft arms tips for ultra comfort
- Excellent side protection
- Anti-scratch/anti-fog
- 99% UV Protection



Best seller

### Wrap Around Spectacles

0352	Colour
PS32AMR	Amber
PS32CLR	Clear
PS32MIR	Mirror
PS32SKR	Smoke

- Single panoramic lens glasses
- Extendable side arms for secure and comfortable fit
- Anti-scratch coating for added durability
- Moulded side shield and brow guard for optimised protection against impacts
- Excellent side protection
- 99% UV protection



### Welding Safety Spectacles

0352	Colour
PW68BGR	Bottle Green

- Silicone free - Ideal for manufacturing, paint applications, electronics and glass handling where silicone is problematic
- Anti-static and anti-fog formula



# RESPIRATORY PROTECTION



Portwest's range of face masks is designed to offer the most comfortable and best fitting product. A user-friendly range, including disposable masks, half masks and filters. Breathe easier with Portwest.

## Respiratory Protection

- Ultrasonic welded head straps
- Foam padding around the nose bridge for additional comfort
- Adjustable nose bar for improved fit and reduced fogging of glasses
- Comfortable cup style respirator
- **Pack of 20**



### FFP1 Respirator

0352	Colour	Quantity
<b>P100WHR</b>	White	20

- Ultrasonic welded head straps
- Foam padding around the nose bridge for additional comfort
- High performance exhalation valve to reduce heat and provide comfort when used in hot and humid conditions
- Adjustable nose bar for improved fit and reduced fogging of glasses
- Comfortable cup style respirator
- **Pack of 10**



### FFP1 Valved Respirator

0352	Colour	Quantity
<b>P101WHR</b>	White	10

- High performance exhalation valve to reduce heat and provide comfort when used in hot and humid conditions
- Adjustable nose bar for improved fit and reduced fogging of glasses
- Foam padding around the nose bridge for additional comfort
- Ultrasonic welded head straps
- Comfortable cup style respirator
- **Pack of 10**



### FFP2 Valved Respirator

0352	Colour	Quantity
<b>P201WHR</b>	White	10

- Special compact vertical fold-flat design
- Ultrasonic welded head straps
- Foam padding around the nose bridge for additional comfort
- **Pack of 20**



### FFP2 Flat Fold Respirator

0352	Colour	Quantity
<b>P250WHR</b>	White	20

- High performance exhalation valve to reduce heat and provide comfort when used in hot and humid conditions
- Special compact vertical fold-flat design
- Ultrasonic welded head straps
- Adjustable nose bar for improved fit and reduced fogging of glasses
- Foam padding around the nose bridge for additional comfort
- **Pack of 20**



### FFP2 Valved Flat Fold Respirator

0352	Colour	Quantity
<b>P251WHR</b>	White	20

- Special compact vertical fold-flat design
- Ultrasonic welded head straps
- Adjustable nose bar for improved fit and reduced fogging of glasses
- Foam padding around the nose bridge for additional comfort
- **Pack of 20**



### FFP3 Flat Fold Respirator

0352	Colour	Quantity
<b>P350WHR</b>	White	20

- High performance exhalation valve to reduce heat and provide comfort when used in hot and humid conditions
- Adjustable nose bar for improved fit and reduced fogging of glasses
- Ultrasonic welded head straps
- **Pack of 10**



### FFP3 Light Cut Respirator

0352	Colour	Quantity
<b>P304WHR</b>	White	10

- Dual bayonet filter connections
- Quick and easy to disassemble for cleaning
- 4-point plastic suspension harness for wearer comfort, safety and easy cleaning
- Adjustable strap fastening for flexible sizing

Filters sold separately



### TPR Half Mask

0352	Colour	Size
<b>P421GRRS/M</b>	Grey	M
<b>P421GRRM/L</b>	Grey	L

- Dual bayonet filter connections
- Quick and easy to disassemble for cleaning
- 4-point plastic suspension harness for wearer comfort, safety and easy cleaning
- Adjustable strap fastening for flexible sizing

Filters sold separately



### Silicone Half Mask

0352	Colour	Size
<b>P431BLUS/M</b>	Blue	M
<b>P431BLUM/L</b>	Blue	L

- Class 2 thermoplastic rubber full face mask
- Durable polycarbonate visor provides all round visibility
- Adjustable 6-point quick release harness for a uniform face seal
- Dual bayonet filter connections
- Anti-scratch & anti-fog coating

Filters sold separately



Protective film for P500 also available

### Vienna Full Face Mask

0352	Colour
<b>P500BKR</b>	Black

# HAND PROTECTION

A newly expanded range of hand protection products caters for all work and safety needs. Only the best materials and manufacturing methods are used in the production of this extensive and highly specialised range.



## Cut Gloves

Pack Qty: 1 pair

- Level F cut resistance
- 13 gauge liner for a perfect fit
- Nitrile foam coating for excellent grip in wet and dry conditions
- Reinforced thumb crotch for extra protection and durability
- This glove can be used with most mobile touch screen devices
- Reflective label for improved visibility



### Nitrile Cut Glove

0352	Size	Colour
A672K8RXS	XS	Black
A672K8RS	S	Black
A672K8RM	M	Black
A672K8RL	L	Black
A672K8RXL	XL	Black
A672K8RXXL	XXL	Black

- Level F cut resistance
- Seamless 13 gauge liner
- Smooth PU coating for increased abrasion resistance
- Reinforced thumb crotch for extra protection and durability
- This glove can be used with most mobile touch screen devices
- Reflective label for improved visibility
- Protection against contact heat up to 100°



### PU Cut Glove

0352	Size	Colour
A670K8RXS	XS	Black
A670K8RS	S	Black
A670K8RM	M	Black
A670K8RL	L	Black
A670K8RXL	XL	Black
A670K8RXXL	XXL	Black

- Level D cut resistance
- Seamless 13 gauge liner
- Liquid Pro offers maximum liquid protection
- Dual latex coating
- Prevents grease, oil and water penetration
- Excellent for jobs requiring high dexterity



### Liquid Pro Cut Glove

0352	Size	Colour
AP81B4RXS	XS	Blue
AP81B4RS	S	Blue
AP81B4RM	M	Blue
AP81B4RL	L	Blue
AP81B4RXL	XL	Blue
AP81B4RXXL	XXL	Blue

- Level C cut resistance
- 13 gauge liner for a perfect fit
- Smooth PU coating for increased abrasion resistance
- Palm dipped to increase dexterity and ventilation
- Breathable seamless liner
- Medium risk cut protection
- Protection against contact heat up to 100°



### Impact Cut Resistant Glove

0352	Size	Colour
A622G7RXS	XS	Grey/Black
A622G7RS	S	Grey/Black
A622G7RM	M	Grey/Black
A622G7RL	L	Grey/Black
A622G7RXL	XL	Grey/Black
A622G7RXXL	XXL	Grey/Black
A622G7RXXXL	XXXL	Grey/Black

- Level D cut resistance
- Seamless 13 gauge liner
- Protects against cuts and abrasion
- Double dipping for maximum liquid repellency
- Sandy finish for exceptional grip in water, grease or oil
- Prevents grease, oil and water penetration



### Aqua Pro Cut Glove

0352	Size	Colour
AP50B8RS	S	Black
AP50B8RM	M	Black
AP50B8RL	L	Black
AP50B8RXL	XL	Black
AP50B8RXXL	XXL	Black

## BEST SELLER

- Nitrile foam coating for excellent grip in wet and dry conditions
- Palm dipped to increase dexterity and ventilation
- 15 gauge liner for extra dexterity
- Breathable seamless liner
- Lightweight and comfortable
- Maximum EN level 4 abrasion



### Dermiflex Glove

0352	Size	Colour
A350BKRXS	XS	Black
A350BKRS	S	Black
A350BKRM	M	Black
A350BKRL	L	Black
A350BKRXL	XL	Black
A350BKRXL	XXL	Black
A350BKRXXXL	XXXL	Black

## Gloves

Pack Qty: 1 pair

### BEST SELLER

- Smooth PU coating for increased abrasion resistance
- Palm dipped to increase dexterity and ventilation
- 13 gauge liner for a perfect fit
- Perfect for intricate tasks
- Maximum dexterity
- Superb abrasion and tear resistance



### PU Palm Glove

0352	Size	Colour
A120BKRXXS	XXS	Black
A120BKRXS	XS	Black
A120BKRS	S	Black
A120BKRM	M	Black
A120BKRL	L	Black
A120BKRXL	XL	Black
A120BKRXXL	XXL	Black
A120BKRXXXL	XXXL	Black

- Made using a sustainable bamboo liner
- 15 gauge liner for extra dexterity
- Palm dipped to increase dexterity and ventilation
- Nitrile foam coating for excellent grip in wet and dry conditions



### Foam Nitrile Bamboo Gloves

0352	Size	Colour
AP10KBRXS	XS	Black
AP10KBR	S	Black
AP10KBRM	M	Black
AP10KBR	L	Black
AP10KBRXL	XL	Black
AP10KBRXL	XL	Black

### BEST SELLER

- Latex foam coating for excellent grip in wet and dry conditions
- Crinkle latex grip offers excellent grip
- Tough 10 gauge liner
- Breathable seamless liner
- Premium quality work glove
- Open back for breathability



### Latex Grip Glove

0352	Size	Colour
A100G4RS	S	Grey/Blue
A100G4RM	M	Grey/Blue
A100G4RL	L	Grey/Blue
A100G4RXL	XL	Grey/Blue
A100G4RXXL	XXL	Grey/Blue
A100GNRM	M	Green
A100GNRL	L	Green
A100GNRXL	XL	Green
A100GNRXXL	XXL	Green
A100K8RM	M	Black
A100K8RL	L	Black
A100K8RXL	XL	Black
A100K8RXXL	XXL	Black
A100ORRS	S	Orange
A100ORRM	M	Orange
A100ORRL	L	Orange
A100ORRXL	XL	Orange
A100ORRXXL	XXL	Orange
A100R8RM	M	Red/Black
A100R8RL	L	Red/Black
A100R8RXL	XL	Red/Black
A100R8RXXL	XXL	Red/Black

- Specially designed for use in cold conditions
- Palm dipped to increase dexterity and ventilation
- Crinkle latex grip offers excellent grip
- Warm 10 gauge acrylic liner for cold protection
- Breathable seamless liner
- Ergonomically designed for comfort and ease of use



### Thermal Grip Glove

0352	Size	Colour
A140BKRXS	XS	Black
A140BKRS	S	Black
A140BKRM	M	Black
A140BKRL	L	Black
A140BKRXL	XL	Black
A140BKRXXL	XXL	Black
A140ORB	M	Orange/Black
A140ORB	L	Orange/Black
A140ORBXL	XL	Orange/Black
A140ORBXXL	XXL	Orange/Black

- Fully coated for maximum liquid protection
- Nitrile foam coating for excellent grip in wet and dry conditions
- Superb abrasion and tear resistance
- 13 gauge liner for a perfect fit
- Lightweight and comfortable
- Elasticated cuffs for a secure fit



### Dermi Pro Glove

0352	Size	Colour
AP3008RXS	XS	Orange/Black
AP3008RS	S	Orange/Black
AP3008RM	M	Orange/Black
AP3008RL	L	Orange/Black
AP3008RXL	XL	Orange/Black
AP3008RXXL	XXL	Orange/Black

- Liquid Pro offers maximum liquid protection
- Latex foam coating for excellent grip in wet and dry conditions
- Dual latex coating for additional protection in tough conditions
- 13 gauge liner for a perfect fit
- Lightweight and comfortable
- Elasticated cuffs for a secure fit



### Liquid Pro Glove

0352	Size	Colour
AP80B4RS	S	Blue
AP80B4RM	M	Blue
AP80B4RL	L	Blue
AP80B4RXL	XL	Blue
AP80B4RXXL	XXL	Blue

# PPE & SAFEGUARDING EQUIPMENT

## Gloves

- High performance multi-purpose glove
- Reinforced thumb crotch for extra protection and durability
- This glove can be used with most mobile touch screen devices
- Lightweight and comfortable
- Wrist strap for secure fittin
- Specially engineered high visibility material



### PW3 General Utility Glove

0352	Size	Colour
A770BKYS	S	Black/Yellow
A770BKYM	M	Black/Yellow
A770BKYL	L	Black/Yellow
A770BKYXL	XL	Black/Yellow
A770BKYXXL	XXL	Black/Yellow

- Level B cut resistance
- High performance multi-purpose glove
- Reinforced thumb crotch for extra protection and durability
- This glove can be used with most mobile touch screen devices
- Wrist strap for secure fittin
- Lightweight and comfortable



### DX4 Cut Glove

0352	Size	Colour
A774K2RS	S	Black/Yellow
A774K2RM	M	Black/Yellow
A774K2RL	L	Black/Yellow
A774K2RXL	XL	Black/Yellow
A774K2RXXL	XXL	Black/Yellow
A774MBRS	S	Metro Blue
A774MBRM	M	Metro Blue
A774MBRL	L	Metro Blue
A774MBRXL	XL	Metro Blue
A774MBRXXL	XXL	Metro Blue

- High performance multi-purpose glove
- Reinforced panels in high wear areas for maximum durability
- Additional knuckle padding for extra protection
- Durable synthetic leather palm
- Reinforced padded palms
- Wrist strap for secure fittin



### Impact Performance Glove

0352	Size	Colour
A720NARM	M	Navy
A720NARL	L	Navy
A720NARXL	XL	Navy
A720NARXXL	XXL	Navy

## BEST SELLER

- Premium full grain cow leather
- Breathable leather for use in mild and hot climates
- Classic leather driver
- Superb abrasion and tear resistance
- Increased puncture resistance properties
- Durable leather



### Lined Drivers Glove

0352	Size	Colour
A271TARL	L	Tan
A271TARXL	XL	Tan

- Silicone free - Ideal for manufacturing, paint applications, electronics and glass handling where silicone is problematic
- Suitable for use in chemical, oil and food industries
- Textured pattern for enhanced grip
- Flock lined for added comfort
- 0.38mm thickness
- 330mm length



### Nitrosafe Chemical Gauntlets

0352	Size	Colour
A812GNRXS	XS	Green
A812GNRS	S	Green
A812GNRM	M	Green
A812GNRL	L	Green
A812GNRXL	XL	Green
A812GNRXXL	XXL	Green

## Disposable Gloves

Manufactured from synthetic nitrile rubber our disposable nitrile gloves eliminate the risk of allergic reaction associated with latex gloves. Textured finish provides enhanced fingertip gri and dexterity in both wet and dry conditions.

- Suited for food processing plants and resistant to greases, animal fats and oils
- Disposable nitrile gloves eliminate the risk of allergic reaction associated with latex gloves
- Smooth and non-textured with a beaded cuff
- Acceptable quality limit (AQL) 1.5
- 240mm length
- 0.07mm thickness
- Retail box which aids presentation for retail sales
- CE certifie
- CE foodsafe

100 gloves per box.

Materials: Nitrile



### A925 Powder Free Nitrile Disposable Gloves

0352	Size	Colour	Box Quantity
A925BLUS	S	Blue	100
A925BLUM	M	Blue	100
A925BLUL	L	Blue	100
A925BLUXL	XL	Blue	100

Premium high strength disposable gloves using innovative crystal grip technology. 7mm thickness for exceptional strength. Highly durable synthetic nitrile compound make this glove three times stronger than standard nitrile.

- Silicone Free
- Idea for auto manufacture, electronics and glass sectors
- Crystal grip technology
- Silicone free. Ideal for manufacturing, paint applications, electronics and glass handling where silicone is problematic
- Suited for food processing plants and resistant to greases, animal fats and oils
- Three times stronger than standard nitrile
- 7mm/0.18mm thickness for exceptional strength
- 240mm length
- Highly durable synthetic nitrile compound
- Retail box which aids presentation for retail sales
- Ideal for auto repair, construction and other sectors
- Acceptable quality limit (AQL) 1.5
- This product is sold in inner boxes
- CE certifie
- CE foodsafe

100 gloves per box.

Materials: Nitrile



### HD Disposable Gloves

0352	Size	Colour	Box Quantity
A930ORRM	M	Orange	100
A930ORRL	L	Orange	100
A930ORRXL	XL	Orange	100



## KNEE PROTECTION

All Portwest knee pads use premium high density material to provide the user with the best protection possible for their knees no matter what the hazard.



### Knee Pads

- Ergonomically designed and tested straps ensure no pinching to the back of the wearers leg
- A strong and durable outer shell makes for a long lasting tough knee pad
- Silicone gel inserts protect joints and ensure great wearer comfort



#### Super Gel Knee Pads

0352	Colour
KP30BKR	Black

- Tough abrasion resistant PVC shell
- Thick silicone gel adapts to your kneecap
- Ergonomically designed and tested straps ensure no pinching to the back of the wearers leg



#### Ultimate Gel Knee Pads

0352	Colour
KP40BKR	Black

- Lightweight EVA foam cushioning
- Reduces knee and back strain
- Integral carry handle



#### Kneeling Pad

0352	Colour
KP05BKR	Black

## LUGGAGE

The essential collection of versatile luggage pieces, suitable for travel, work or general everyday use. Robustly constructed with strong materials.



### Duffle Bag

- Ideal for carrying tools, equipment or for use as a travel bag
- Two zipped compartments
- Robust base panel
- Adjustable shoulder strap for added comfort
- 65cm x 25cm x 35cm
- 60 litres



0352	Colour	Size Litres
B960BKR	Black	60

### Boot Bag

- Generous storage to fit most work boots
- Carry handle for added convenience
- Integrated changing mat
- 35cm x 30 cm x 12 cm
- 12 litres



0352	Colour	Size Litres
B914BKR	Black	12

### Rucksacks

- Heat applied segmented reflective tape for added visibility
- Pull string front provides extra storage
- Two mesh water bottle pockets double as multi-use pockets
- 38cm/15" laptop sleeve
- Padded mesh back panel and a breathable lumbar panel for comfortable ventilated support
- 47cm x 30cm x 19.5 cm
- 25 litres



#### PW3 Hi-Vis Rucksack

0352	Colour	Size Litres
B955YER	Yellow	25

- Padded double straps for added support
- Reflective tape for increased visibility
- Padded back panel for wearer comfort
- Phone pocket
- 28cm x 21cm x 43 cm
- 25 litres



#### Hi-Vis Rucksack

0352	Colour	Size Litres
B905ORR	Orange	25
B905YER	Yellow	25

## PPE & SAFEGUARDING EQUIPMENT

### Overalls

- Elasticated hood, ankles, cuffs and waist
- Two way front zip and sealable front fla
- Anti static
- Excellent liquid and particulate barrier protection



### Microporous Overall

0352	Size	Colour
ST40WHRS	S	White
ST40WHRM	M	White
ST40WHR L	L	White
ST40WHRXL	XL	White
ST40WHRXXL	XXL	White
ST40WHRXXXL	XXXL	White

### Sleeve

- Elasticated cuffs for a secure fi
- Designed for a comfortable fi
- Box of 150 pairs



### Microporous Sleeve

0352	Colour
ST43WHR	White

Cut level D



### Cut Resistant Sleeve

0352	Colour
A690GRR	Grey
A690YER	Yellow

### Overshoes

- Disposable boot covers for superior protection against cross contamination
- Elasticated cuffs for a secure fi
- Box of 200 pairs



### Microporous Shoe Cover

0352	Colour
ST44WHR	White

## PPE & SAFEGUARDING EQUIPMENT

### Engineers Gloves



### Superior Nitrile Gloves, Orange, 50 Singles Pack

0086	Size
5300-207	S (7)
5300-208	M (8)
5300-209	L (9)
5300-210	XL (10)



### Superior Nitrile Gloves, Black, 50 Singles Pack

0086	Size
5300-107	S (7)
5300-108	M (8)
5300-109	L (9)
5300-110	XL (10)
5300-111	XXL (11)

# INDUSTRIAL CLEANING EQUIPMENT

## Hand Wet Wipes

The moist wipes require no additional liquids as the low alcohol base anti-bacterial cleaning solutions helps clear all stains and marks leaving the skin cleansed as well as dry thanks to rapid evaporation. Each tub contains 150 perforated sheets.



## Degreasing Wipes

0212	Quantity
IPGM	150 Wipes

A powerful alcohol based cleaning solution that quickly gets to work on paint and related stains cleaning fast. Each tub contains 150 perforated sheets.



## Paint & Mastic Removing Wipes

0212	Quantity
IPGP	150 Wipes

In today's food preparation areas, hygiene guidelines are tough and the risk of cross contamination through neglecting these requirements puts many people at risk. With the surface wipes, killing off all potentially lethal bacteria from passing from one product to another.



## Sani Safe Disinfectant Wipes

0212	Quantity
IPSS4	200 Wipes

These handy wipes are an ideal size to keep handy and give off a pleasant fragrance that also identifies when the product is actively killing off bacteria.



## Office Wipe

0212	Quantity
BA035	150 Wipes

## Non-woven Dry Wipes

A strong, low lint, solvent resistant, absorbent cloth. Supplied in a handy dispenser box, suitable for all applications.



## Super Strong Low Lint Rag Replacement

0212	Quantity
DWTWDP	150 Wipes

An industrial 2 ply centre feed roll.



## Wiper Rolls

0212	Length Metres	Quantity
CF14BE	140	6 Rolls
MR74	140	2 Rolls

A retail branded quality 2 ply toilet roll.



## Toilet Rolls

0212	Quantity	Colour
CT402839	40 Rolls x 220 Sheets	White

A high volume toilet roll suitable for volume use areas. 76mm core.



## Jumbo Toilet Rolls

0212	Quantity
JT04	12 Rolls

A quality soft hand towel white C-fold.



## Hand Towels

0212	Quantity
HT24	2400 Towels

## Dispensers

Lockable.



## C-Fold Hand Towel Dispenser

0212
HTD534



## Mini Jumbo Toilet Roll Dispenser

0212
JTD202



## Standard Centrefeed Roll Dispenser

0212
CFD216

Portable free standing dispenser.



## Floor Stand Dispenser

0212
MRD522

# ENGINEERING CONSUMABLES

## Lockout & Tagout Products



**Universal  
Circuit Breaker Lockout**

0086	Description
LOK043	Universal MCB Lockout



**Mini Circuit Breaker Lockout**

0086	Type	Colour
LOK020-L	Pin Out	Yellow



**Electrical/Pneumatic Plug Lockout**

0086	
LOK030	



**Lockout Kit, Medium**

0086	
LOK116	



**Maintenance Electrical Lockout Kit**

0086	
LOK230	



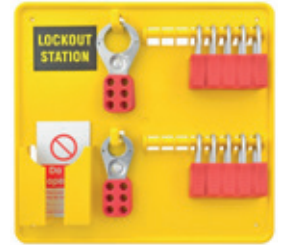
**Electrical Lockout Kit**

0086	
LOK229	



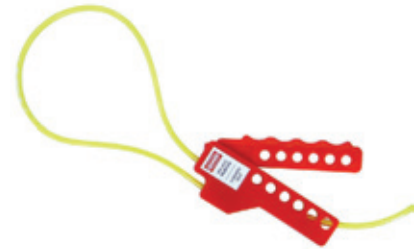
**Lockout Board, 5 Station**

0086	
LOK172	



**Lockout Board, 10 Station**

0086	
LOK173	



**Multi-purpose Cable Lockout**

0086	Cable Type
LOK014	2.5 Metre Nylon Cable



For **Spill Absorbents & Spill Prevention**  
see pages **279-282**



# ENGINEERING CONSUMABLES

## Lockout & Tagout Products



### Ball Valve Lockouts

0086	Size mm	Maximum Handle Length mm
LOK023	9.5-31	190
LOK024	32-76	254



### Ladder Tag Kit, 10 Pieces

0086	Description
TG04BOX	10 Piece Ladder Tag Kit



### Lockout Tags, Double Sided, 10 Pack

0086	Description
LOK073	Do Not Use/Do Not Open - Double Sided, 10 Pack



### Safety Lockout Padlocks

0086	Colour
LOK011-L	Black
LOK010-L	Blue
LOK007-L	Red
LOK008-L	Yellow
LOK009-L	Green



### Dielectric Safety Lockout Padlock, Non-conductive

0086	Colour
LOK068	Yellow

## First Protection



### Fire Extinguisher - Powder

0086	Description
14364	600kg Dry Powder Extinguisher
14365	800kg Dry Powder Extinguisher



### Fire Extinguisher - Powder

0086	Description
14366	1kg Dry Powder Extinguisher

## First Aid



### Travel Pouch 1 Person First Aid Kit

0086	Description
254810	



### Van & Truck Drivers First Aid Kit

0086	Description
254809	

# ENGINEERING CONSUMABLES

## Shadowboard Cleaning Stations

### Style A

0086	Colour
SB-BD01-BL	Blue
SB-BD01-GR	Green
SB-BD01-RD	Red
SB-BD01-YL	Yellow



### Style B

0086	Colour
SB-BD02-BL	Blue
SB-BD02-GR	Green
SB-BD02-RD	Red
SB-BD02-YL	Yellow



### Style C

0086	Colour
SB-BD03-BL	Blue
SB-BD03-GR	Green
SB-BD03-RD	Red
SB-BD03-YL	Yellow



### Style D

0086	Colour
SB-BD04-BL	Blue
SB-BD04-GR	Green
SB-BD04-RD	Red
SB-BD04-YL	Yellow



## Duracell Industrial Batteries

### AA Batteries, 10 Pack

0086
DPB2A



### AAA Batteries, 10 Pack

0086
DPB3A



### 9V Battery

0086
DPB9V



## Padlocks

### Standard Brass Padlocks

0088	Size mm
SP24L	30
SP26L	40



### Brass 4 Wheel Combi Padlock

0088	Size mm
SP162P	30



### Weather Resistant Padlock

0088	Size mm
SP160P	30





## i-Flow: **Cost effective** on-site **nitrogen gas** generation

- ▶ Economical, on-demand N2 solution that saves you money
- ▶ Highly efficient & reliable technology, for maximum productivity
- ▶ Future-proof, expandable design to meet your growing demands
- ▶ Expert consultation & system design, backed by world-class support

**Contact us today to discover more!**